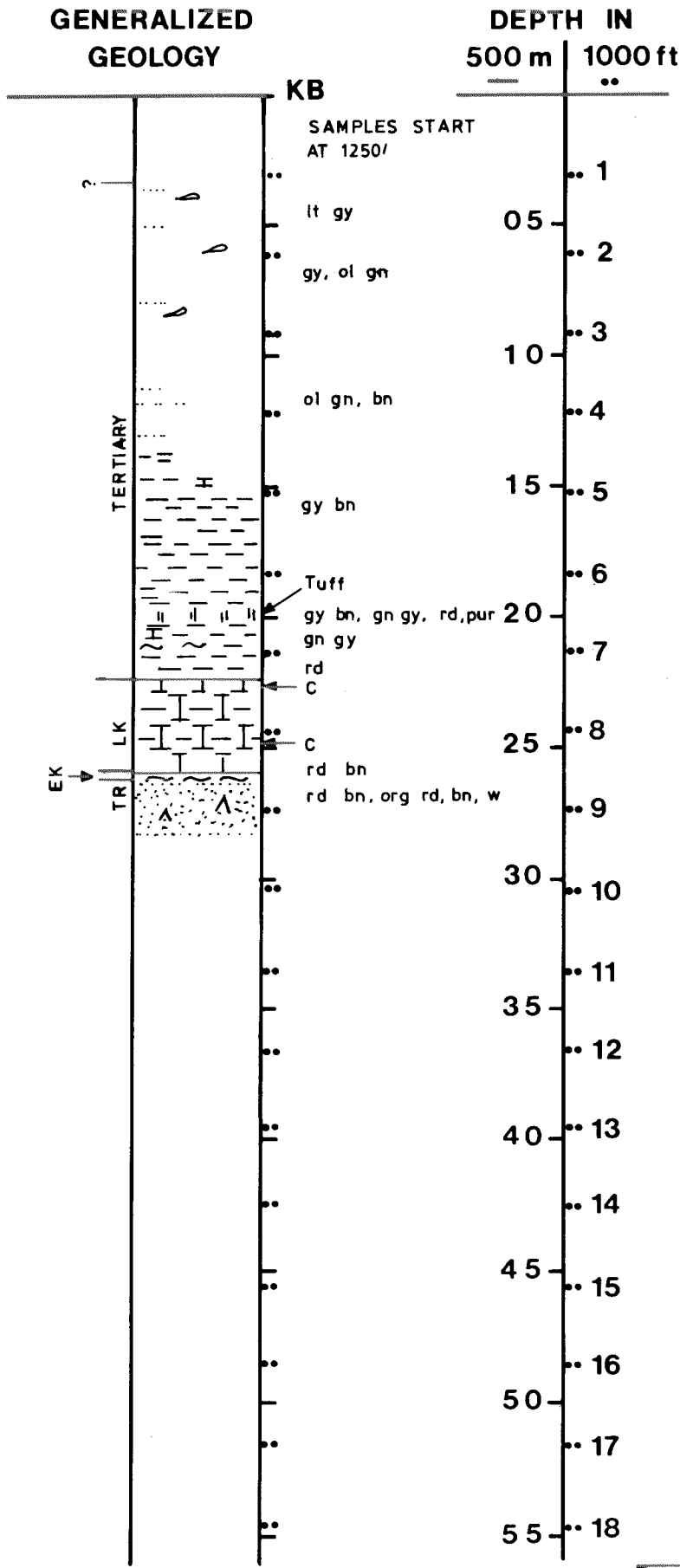


WELL NO 7/1-1A OPERATOR AMOCO

T.D. 2808 M

K.B. 34 M

W.D. 82 M



Cong	Ss	Slts
Mdst	Sh	Carb
Marl	Chalk	Ls
Dol	Anhy	Salt
Coal/ lig	Ign/ Meta	Macrofossil
Cored		

1cm = 250 m

1cm = 820 ft

WELL ID: 7/1-1A COORDINATES: 57°48'01" N 02°10'09" E LICENSEE: AMOCO/NOCO  
 LICENSE NO: 004 KBE: 34<sub>M</sub> WD 82 M PERMIT NO: 55 PERMIT DATE: 12.05.71 T D 2808 M  
 OPERATOR: AMOCO NORWAY CONTRACTOR: SEDCO INC RIG: SEDCO 135 F  
 SPUD DATE: 03.07.71 COMPLETION DATE: 05.08.71 STATUS: P + A BHT 93,3 C  
 FMTN AT T D: TRIASSIC PROD FMTN: PROD FMTN:  
 FIELD: CLASSIFICATION: NEW FIELD WILDCAT

CASING RECORD:

	DIA. INCH	DEPTH BELOW KB - METRES	HOLE SIZE DIA - INCH	DEPTH BELOW KB - METRES
SFC CGS	30	154	36	159
INT CGS	20	367	26	381
INT CGS	13 3/8	1571	17 1/2	1601
INT CGS				
INT CGS				
PROD CGS				

LOGS RUN

TYPE	INTERVAL METR
IES	365-2811
BHC/GR	365- 881
GR	881-1571
BHC/GR	1571-2808
FDC/GR	2134-2811
CBL/GR	113- 365
SNP/GR	2134-2811
HRT	131- 369
HDT	1571-2811
SRS	

CORES

NOS OF CORES	TOTAL METRES	REC METRES
I CONVENTIONAL	2243,3-2261,6	7,6
I CONVENTIONAL	2451,2-2468,9	17,6

DST AND WIRELINE TESTS

TYPE	INTERVAL METRES	REC	FSIBHP	FFP	TEMP °C

DEVIATION

DEPTH METRES	DEG
152	0,50
351	0,25
1143	0,50
1402	1,00
1585	1,00
1860	1,10
2165	0,90
2470	0,40
2744	0,30

MISC: SRS - INTERVAL NOT AVAILABLE  
 DIVERS OBSERVED LEAK BETWEEN 20" AND 30" CASING, WELL KICKED,  
 RIG MOVED 31 METRES, RE-SPUDDÉD.