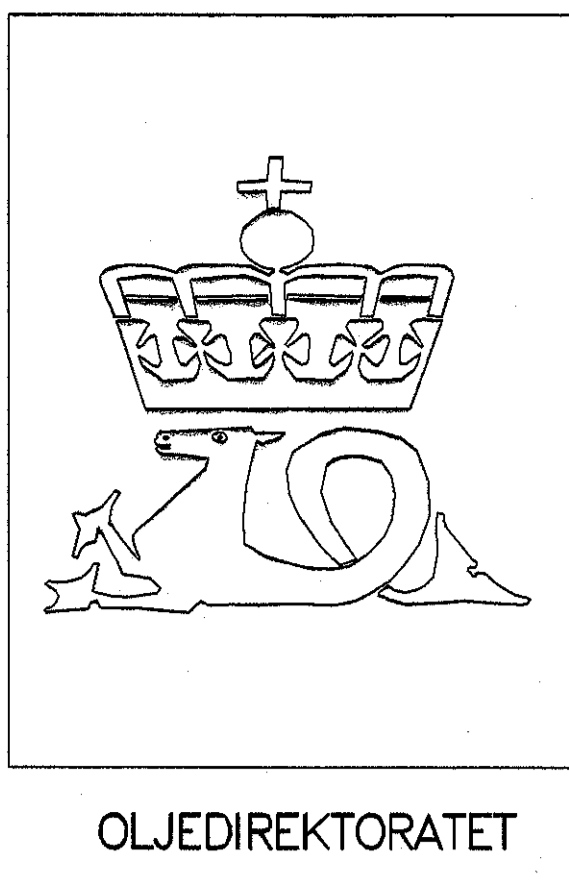


**WELL NO: 34/8-7**

OPERATOR: NORSK HYDRO PRODUKSJON AS  
 LICENSE NO: 120

TOTAL DEPTH: 5460 M RKB  
 KBE: 23 M  
 WATER DEPTH: 334 M

COORDINATES: 61°19'09.07"N/02°33'32.15"E  
 DATUM: ED50  
 SPUD CLASSIF.: WILDCAT  
 COMPL. CLASSIF.: SUSP.

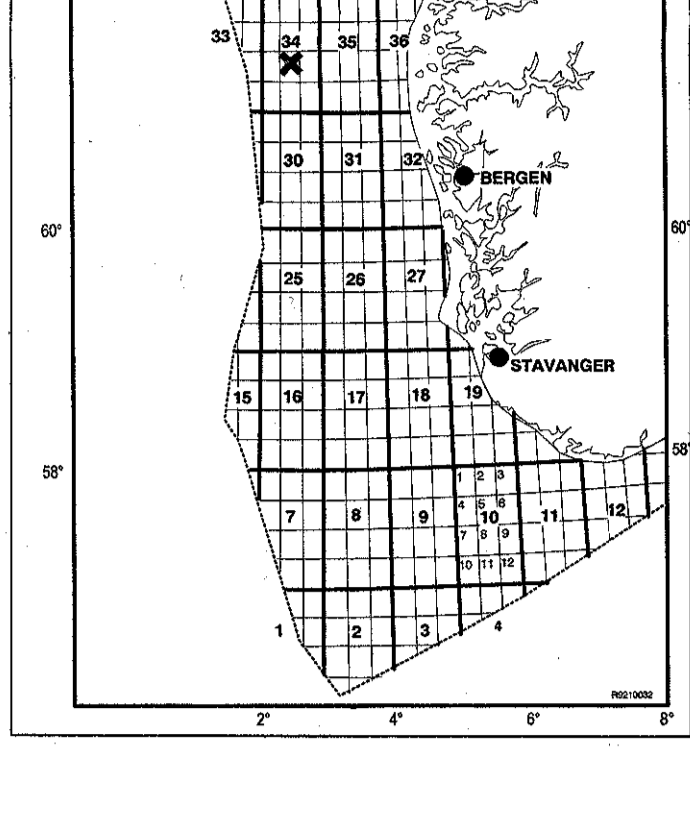


OLJEDIREKTORATET

SPUD DATE: 92.03.21  
 COMPL. DATE: 92.07.16  
 RIG: POLAR PIONEER

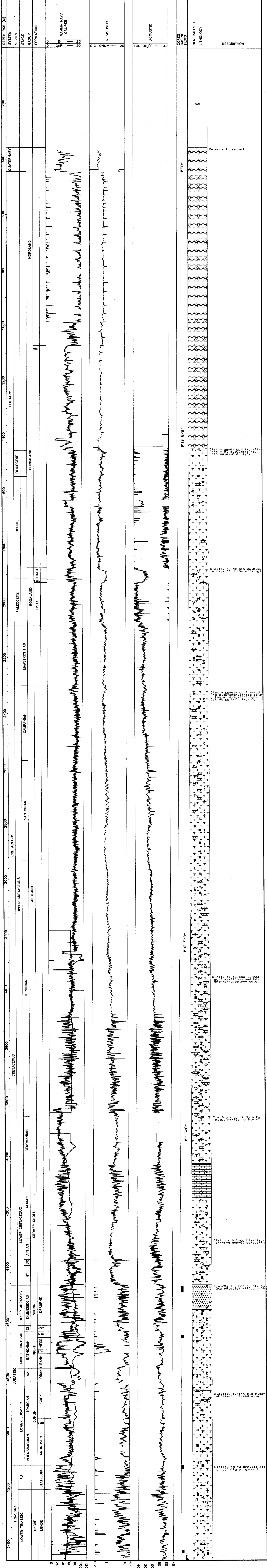
LICENSE GROUP:  
 NORSKE CONOCO A/S 13.000 %  
 ELF PETROLEUM NORGE AS 13.000 %  
 NORSK HYDRO PRODUKSJON AS 18.000 %  
 SAGA PETROLEUM ASA 6.000 %  
 DEN NORSKE STATS OLJESELSKAP A.S 50.000 %

LOCATION MAP



**COMPLETION LOG**

scale 1: 4000



DEPTH (RKB) (M) 200 400 600 800 1000 1200 1400 1600 1800 2000 2200 2400 2600 2800 3000 3200 3400 3600 3800 4000 4200 4400 4600 4800 5000 5200 5400

SYSTEM QUATERNARY TERTIARY CRETACEOUS JURASSIC TRIASSIC

SERIES ECENE PALEOCENE OLIGOCENE

STAGE HORDALAND HORDALAND

GROUP NORDBLAND

FORMATION LISTA BALD

MAASTRICHTIAN CAMPAHIAN SARTONIAN

UPPER CRETACEOUS TURONIAN SHELTON

LOWER CRETACEOUS CROMER KNOLL

UPPER JURASSIC KIMMERIDGIAN VIKING

MIDDLE JURASSIC BATHONIAN BREAT NESS

LOWER JURASSIC TOARCAN COOK

PLENSBACHIAN AMUNDSEN

STATFJORD

HEIRE LUNDE

RU

GAAMA RAY/ GALPER

RESISTIVITY

ACOUSTIC

CORES CASING TESTS

GENERALIZED LITHOLOGY

DESCRIPTION

Returns to seabed.

18 5/8"

15 3/8"

9 5/8"

15 3/8"

9 5/8"

15 3/8"

9 5/8"