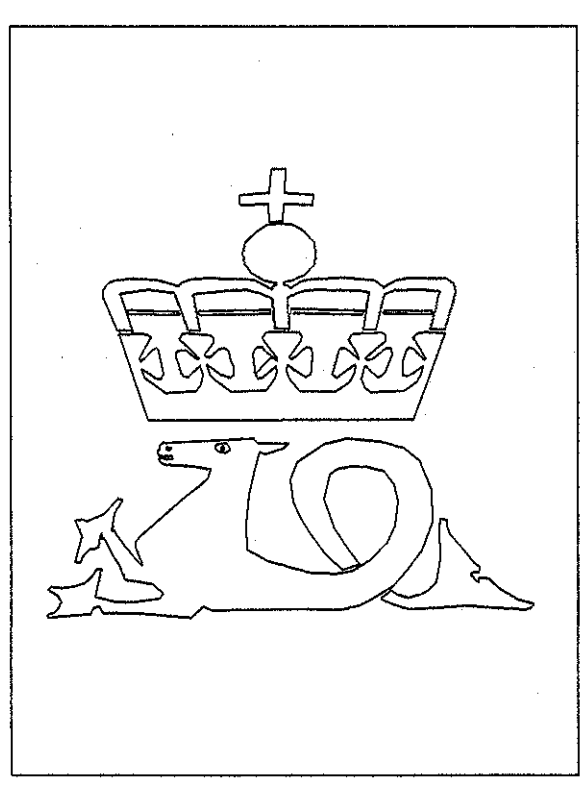


WELL NO: 30/3-5S

OPERATOR: STATOIL
 LICENSE NO: 052

TOTAL DEPTH: 4724 M RKB
 KBE: 56 M
 WATER DEPTH: 175 M

COORDINATES: 60°46'57.82"N/02°53'52.70"E
 DATUM: ED50
 SPUD CLASSIF.: WILDCAT
 COMPL. CLASSIF.: RE-CLASS. TO PROD.

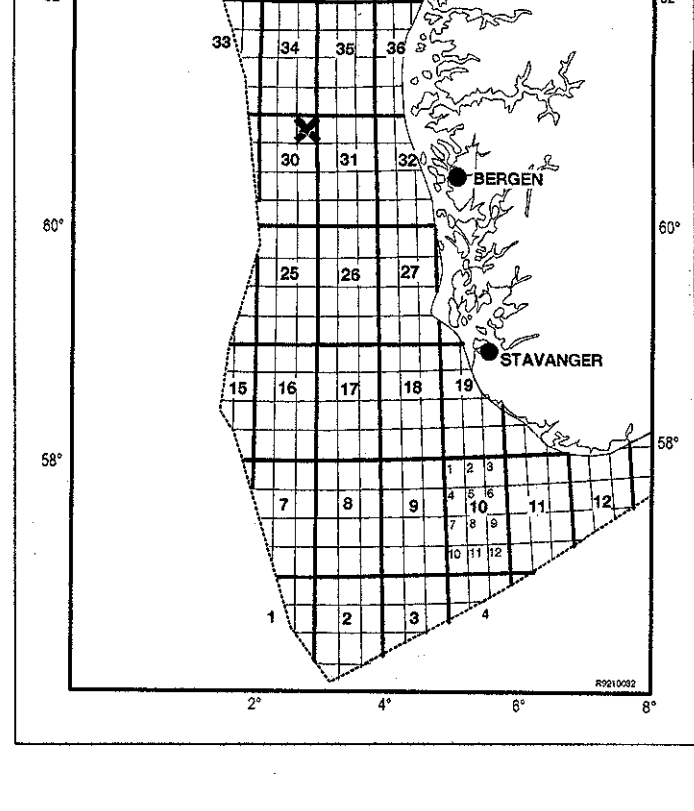


OLJEDIREKTORATET

SPUD DATE: 92.05.01
 COMPL. DATE: 92.07.17
 RIG: VESLEFRICK A

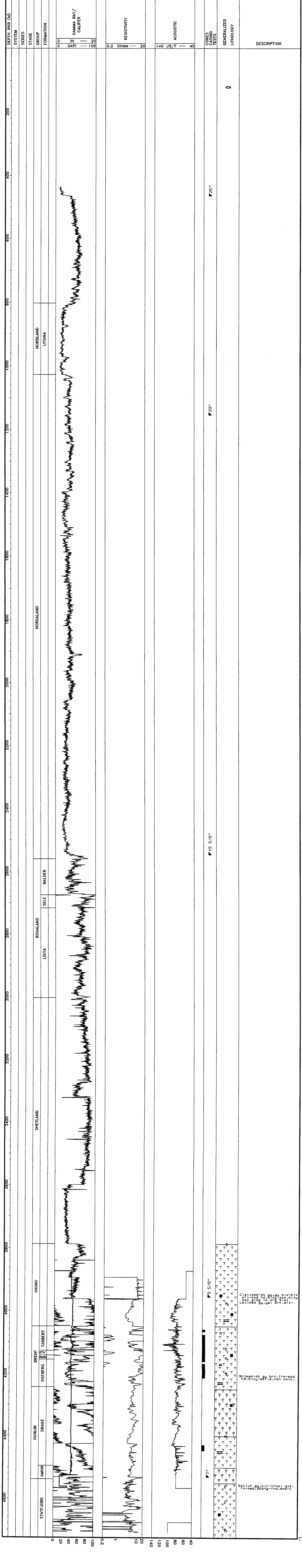
LICENSE GROUP:
 DEMINEX NORGE AS 11.250 %
 NORSK HYDRO PRODUKSJON AS 9.000 %
 NORSKE DEMINEX AS 2.250 %
 DEN NORSKE STATS OLJESELSKAP A.S 55.000 %
 SVENSKA PETROLEUM EXPLORATION AS 4.500 %
 TOTAL NORGE AS 18.000 %

LOCATION MAP



COMPLETION LOG

scale 1: 4000



Shined-ds by brn.frm-ead
 Hd:btty=8F7a.non oolc:

SpA:wh 0ycoln=lrngel.gtz.
 Hnd:btty=8F7a.non oolc: