

**WELL NO: 6506/11-3**

OPERATOR: STATOIL  
 LICENSE NO: 134

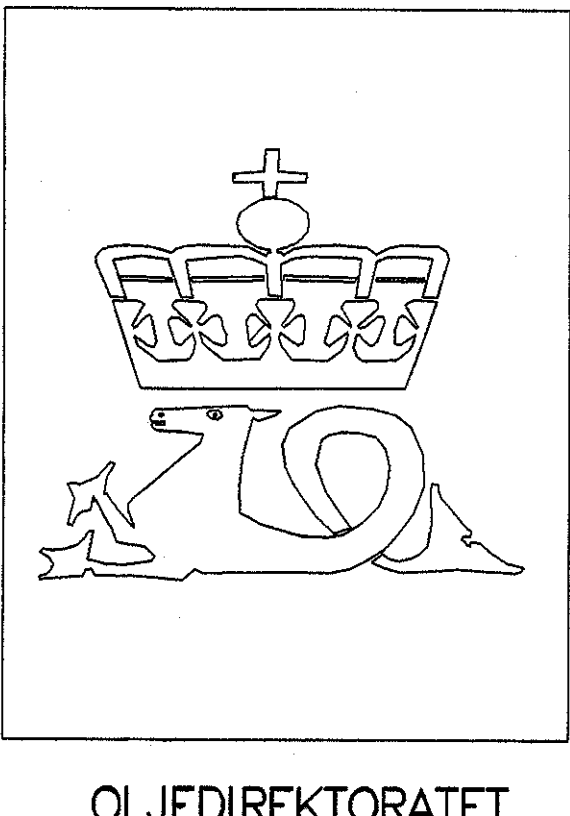
TOTAL DEPTH: 4350 M RKB  
 KBE: 23 M  
 WATER DEPTH: 326 M

COORDINATES: 65°13'58.44"N/06°22'26.89"E  
 DATUM: ED50  
 SPUD CLASSIF.: WILDCAT  
 COMPL. CLASSIF.: P&A. SHOWS

SPUD DATE: 92.07.08  
 COMPL. DATE: 92.10.01  
 RIG: ROSS RIG

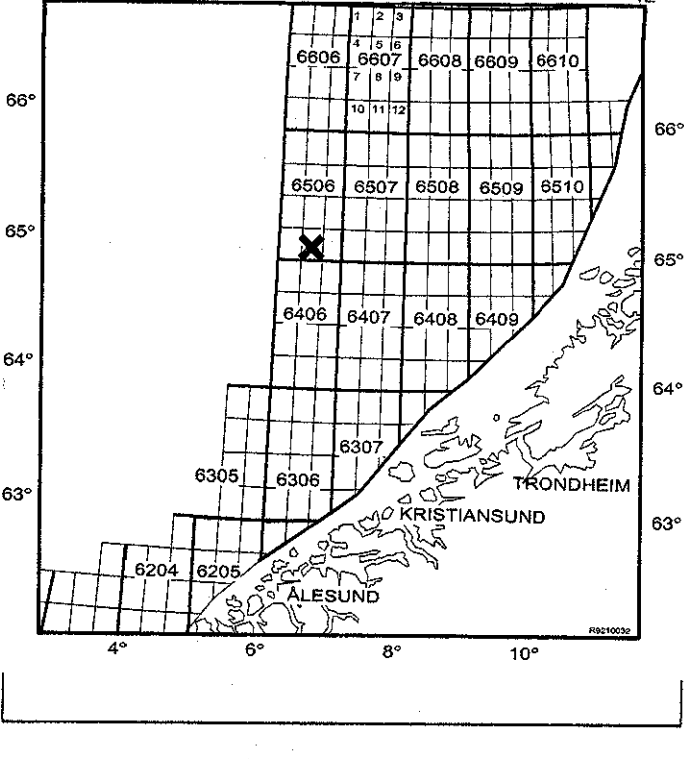
LICENSE GROUP:

- NORSK AGIP AS 30.000 %
- CONOCO PETROLEUM NORGE AS 10.000 %
- ENTERPRISE OIL NORWEGIAN AS 10.000 %
- DEN NORSKE STATS OLJESELSKAP A.S 50.000 %



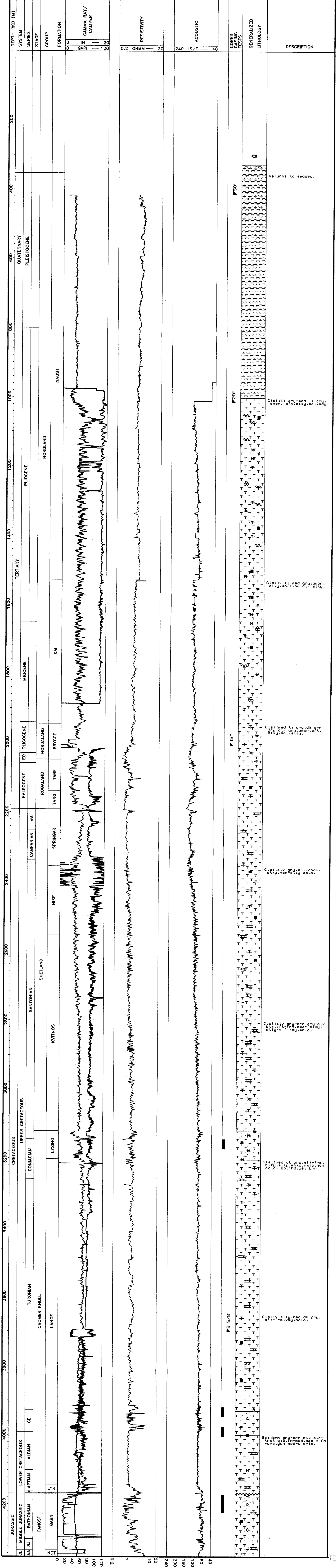
OLJEDIREKTORATET

LOCATION MAP



**COMPLETION LOG**

scale 1: 4000



Returns to seabed.

Cl:lt:lt grv-med ll grv, amor, of:et:tky,so:lt:edg.

Cl:lt:v,li:med grv,grv, et:ky,so:lt:med,grv,grv.

Cl:lt:med ll grv,dk grv, grv:otv,grv,amor,of:lt: et:ky,so:lt:edg.

Cl:lt:otv,grv,of:lt,amor, et:ky,non:st:ly,co:lt.

Cl:lt:otv,grv,brn,grv,otv, et:ky,of:lt,med,grv,grv, et:ky,v'f,edg,mm:co.

Cl:lt:med dk grv,of:lt,frn, co:lt,bot:ind,of:lt,brn.

Cl:lt:ly,cl:ly,med dk grv, of:lt:frn,ly,co:lt.

Cl:lt:brn,grv,brn,bl:cl,frn:al,gl:z,fr:med,co:lt,v'frn, -crs,gen,so:lt-v,ert:ed.