

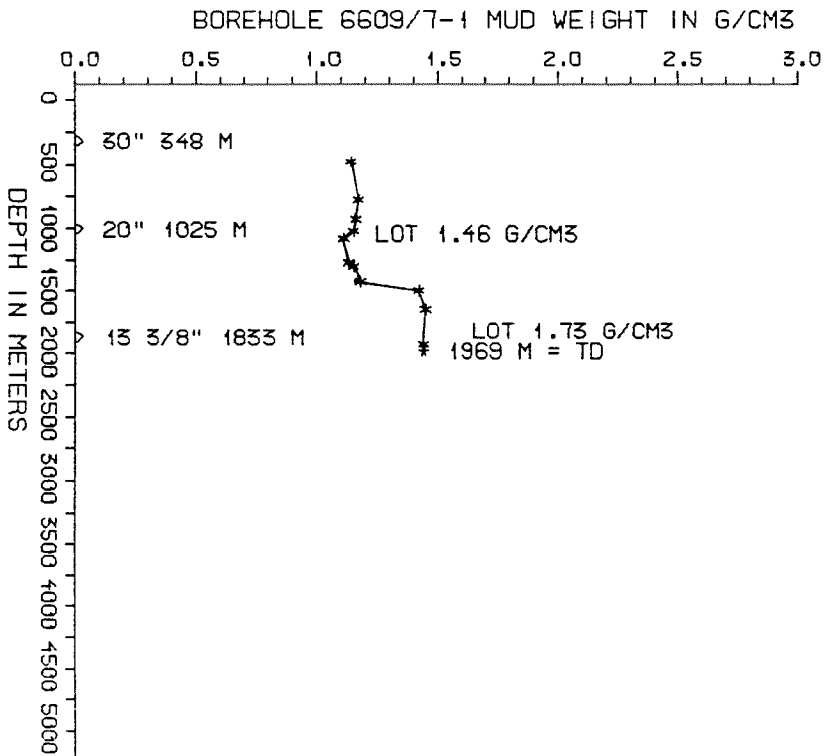
DRILL STEM TEST									
TEST NO	DEPTH BELOW KB	CHOKE SIZE mm	RECOVERY					PRESS. (psi)	
			OIL Sm ³ /d	GAS M Sm ³ /d	OIL GRAV. g/cm ³	GAS GRAV. rel.air	GOR m ³ /m ³	WHFP	BHFP
	NONE								

AVAILABLE LOGS			
LOG TYPE	INTERVALS	1/200	1/500
DIL LSS GR	276 - 1035	X	X
DIL LSS MSFL	1024 - 1843	X	X
DIL LSS	1833 - 1941	X	X
DIL LSS	1833 - 1967	X	X
LDL CNL NGL	1024 - 1843	X	X
LDL CNL NGL	1833 - 1942	X	X
LDL CNL NGL	1833 - 1967	X	X
NGL RATIO PLAYBACK	1024 - 1843	X	
NGL RATIO PLAYBACK	1833 - 1942	X	
NGL RATIO PLAYBACK	1833 - 1967	X	
SHDT (CDM)	1833 - 1942	X	
CDM AP	1833 - 1930	X	
CYPERDIP	1833 - 1942	X	
WIRELINE DATA PRESS. LOG	350 - 1969	1:5000	
PRESS.EVALUATION LOG	350 - 1969	1:5000	
DRILL. DATA PRESS. LOG	350 - 1969	1:5000	
TEMP. DATA LOG	350 - 1969	1:5000	
MWD (MEASUREM. WHILE DR.)	1043 - 1943		X
CBL VDL CCL	950 - 1796	X	
CBL VDL CCL	1500 - 1797	X	
MUD	350 - 1967		X
VELOCITY (Seism. Calibr.)	276 - 1941		X
(Synthetic Seismogram, Geogram		4 stk)	
(Seismic logs, plot 1-8, rev.pol.		8 stk)	
(VSP proc., nor/rev. pol., plot 9-26		18 stk)	
(VSP, 1007-1923 m,		1 stk)	

MUD PROPERTIES			
DEPTH BELOW KB m	WEIGHT g/cm ³	FUNNEL VISC. sec	FILTRATE LOSS cm ³
405	1.11	39	
710	1.14	40	
850	1.13	42	
950	1.12	38	
1055	1.08	43	
1155	1.10	43	
1250	1.12	45	
1375	1.15	47	
1460	1.39	47	
1600	1.42	49	
1855	1.41	50	

DRILL BIT CUTTINGS AND WET SAMPLES		
SAMPLE TYPE	INTERVAL BELOW KB	NUMBER OF SAMPLES
CUTTINGS	350-1968	210
WET SAMPLES	350-1968	180

SHALLOW GAS	
DEPTH INTERVAL m KB	REMARKS
	NONE



WELL HISTORY - 6609/7-1

GENERAL:

The objective of the wildcat 6609/7-1 was to test anticipated Upper Paleozoic sandstones within the Nordland Rigde. The well was plugged and abandoned after penetrating metamorphic basement. Paleozoic sands were absent and no significant hydrocarbon shows were encountered.

OPERATIONS:

The well was spudded 21.06.83 by the semi-submersible rig Nordraug. Two cores were cut in the metamorphic basement. No sidewall cores were taken.

Mud problems occurred several times during drilling, well flowing and lost circulations occurred from 1500 m to TD.

The well was drilled using waterbased mud.

TESTING:

The well was not tested.

GEOLOGICAL TOPS
WELL 6609/7-1

	Depth m (RKB)
Nordland Group	250,0
Hordaland Group	1459,0
Rogaland Group	1500,0
Tare Fm	1500,0
Tang Fm	1600,0
Shetland Group	1609,0
Cromer Knoll Group	1843,0
Permian	1876,0
Basement	1912,0
TD =	1969,0