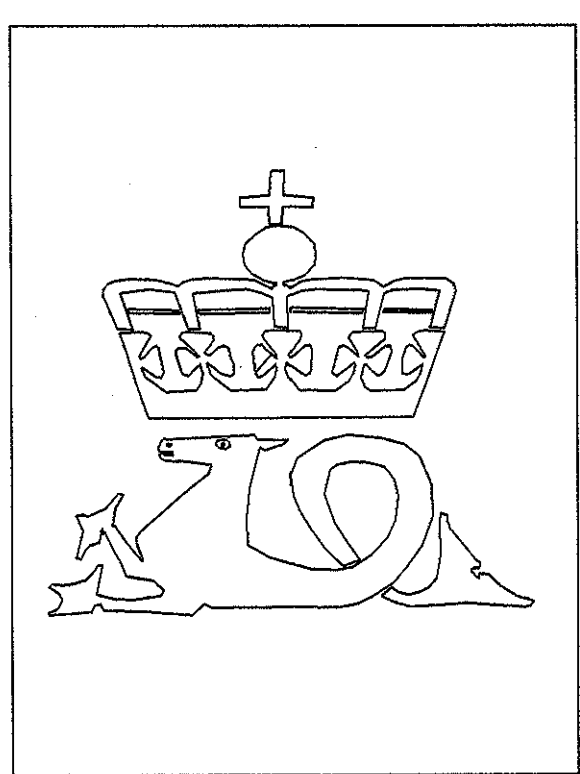


WELL NO: 34/7-21

OPERATOR: SAGA PETROLEUM ASA
 LICENSE NO: 089

TOTAL DEPTH: 3015 M RKB
 KBE: 26 M
 WATER DEPTH: 192 M

COORDINATES: 61°17'36.84"N/02°04'21.14"E
 DATUM: ED50
 SPUD CLASSIF.: WILDCAT
 COMPL. CLASSIF.: P&A. OIL DISCOVERY



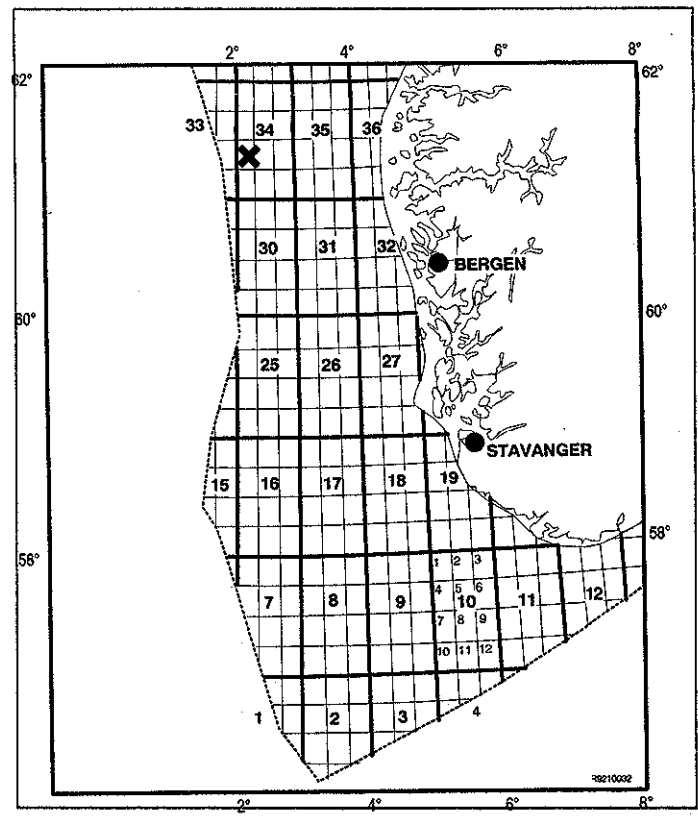
OLJEDIREKTORATET

SPUD DATE: 92.10.19
 COMPL. DATE: 92.12.11
 RIG: TREASURE SAGA

LICENSE GROUP:

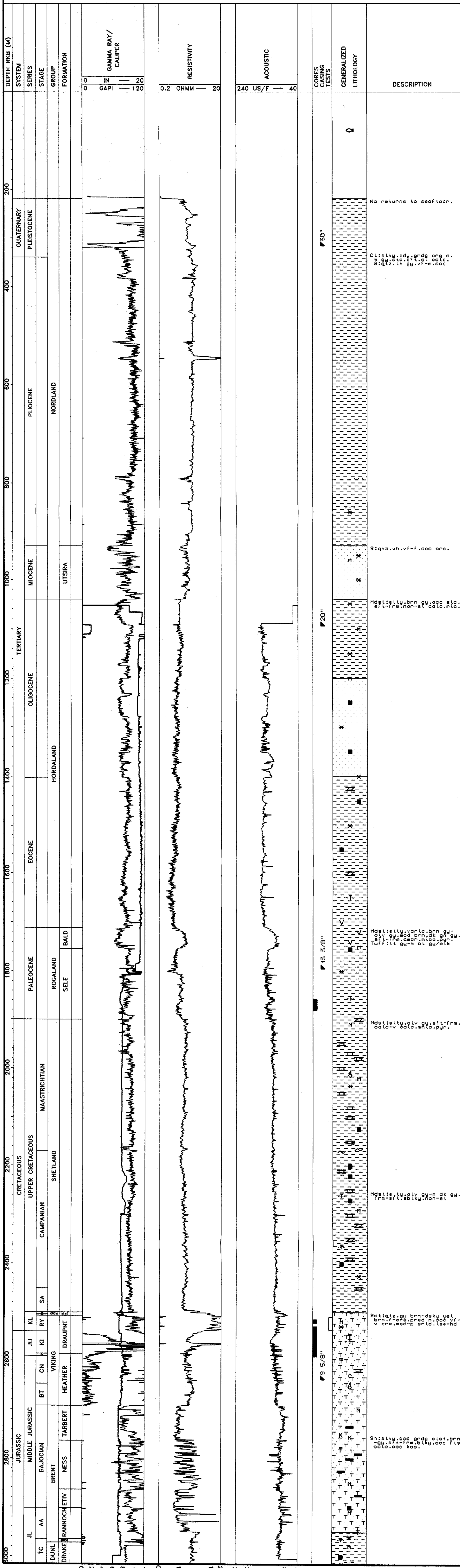
DEMINEX NORGE AS	2.800 %
DNO OLJE A/S	.700 %
ELF PETROLEUM NORGE AS	5.600 %
ESSO EXPL. & PROD. NORWAY A/S	10.500 %
NORSK HYDRO PRODUKSJON AS	8.400 %
IDEMITSU PETROLEUM NORGE AS	9.600 %
SAGA PETROLEUM ASA	7.000 %
DEN NORSKE STATS OLJESELSKAP A.S	55.400 %

LOCATION MAP



COMPLETION LOG

scale 1: 4000



DEPTH RKB (M)

SYSTEM	QUATERNARY	PLEISTOCENE	PLIOCENE	MIOCENE	OLIGOCENE	EOCENE	PALEOCENE	MAASTRICHTIAN	UPPER CRETACEOUS	CAMPANIAN	JURASSIC	MIDDLE JURASSIC	BAJOCIAN	BRACHIOLETTI	TRIASSIC
SERIES															
STAGE															
GROUP			NORDLAND	UTSIRA			ROGALAND								
FORMATION							SELE								

GAMMA RAY / CALIPER

RESISTIVITY

ACOUSTIC

CORES CASING TESTS

GENERALIZED LITHOLOGY

DESCRIPTION

No returns to seafloor.

Cl:ltty,edu,rdg,org,s,gv,sto,frt,gt,oco, S:qtz,lt,gv,vf-m,ooo

S:qtz,vh,vf-f,ooo,one.

Mdt:ltty,brn,gv,ooo,sto,efl-frn,non-ef,oco,mc.

Mdt:ltty,vap,ic,brn,gv,efl-frn,non-ef,oco,pyr, Turf:lt,gv,m,bl,gv,ok

Mdt:ltty,olv,gv,efl-frn,oco-v,oco,mm,oco,pyr.

Mdt:ltty,olv,gv,m,dk,gv,frn-efl,eb,ky,non-ef

S:qtz,gv,brn,dky,sel,gv,efl-frn,non-ef,oco,pyr,one,mod-p,brn,rd,tee-hd

Sh:ltty,oco,rdg,sto,brn,gv,efl-frn,oco,pyr,oco,oco,ooo,ooo