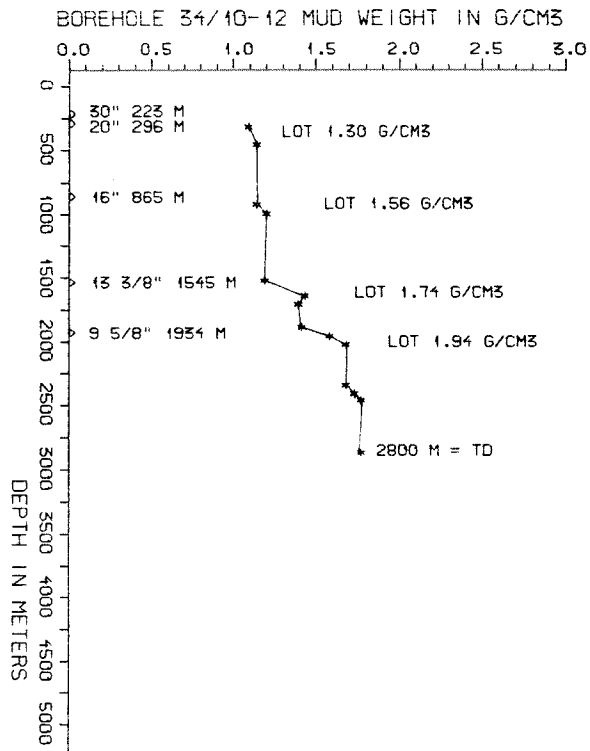


| AVAILABLE LOGS | | | |
|---------------------|-------------|-------|-------|
| LOG TYPE | INTERVALS | 1/200 | 1/500 |
| ISF BHC GR | 160 - 849 | X | |
| ISF BHC | 863 - 1556 | X | |
| ISF BHC | 1542 - 1949 | X | |
| ISF BHC | 1932 - 2309 | X | |
| ISF BHC | 2307 - 2796 | X | |
| ISF SONIC GR | 160 - 2796 | | X |
| FDC CNL | 225 - 850 | X | |
| FDC CNL | 863 - 1556 | X | |
| FDC CNL | 1542 - 1949 | X | |
| FDC CNL | 1930 - 2798 | X | |
| FDC CNL | 225 - 2798 | | X |
| CDM | 1932 - 2797 | X | X |
| CDM AP | 1941 - 2798 | X | X |
| RFT (PRESSURE TEST) | 2031 - 2206 | X | |
| BGT | 296 - 860 | X | X |
| BGT | 296 - 865 | X | X |
| CBL VDL | 150 - 1543 | X | X |
| CBL VDL | 1200 - 1932 | X | |
| MUD | 225 - 2800 | | X |
| VELOCITY (L.T.S.) | 160 - 2796 | :1000 | X |

(Air Gun Well Velocity Survey & C.L.D. 1stk)
 (Synthetic Seismogram Marine, 10cm/s, 1stk)
 (Synthetic Seismogram, b/p-w/t, 10cm/s, 2stk)
 (Two Way Travel Time log, 10cm/s, 1stk)

| MUD PROPERTIES | | | | |
|---------------------|-----------------|------------------------|-------------------------|---------|
| DEPTH BELOW KB m | WEIGHT g/cm3 | FUNNEL VISC. sec | FILTRATE LOSS cm3 | REMARKS |
| 250 | 1.06 | 10 | | |
| 390 | 1.11 | 6 | | |
| 800 | 1.09 | 8 | | |
| 860 | 1.11 | 4 | | |
| 930 | 1.17 | 9 | | |
| 1450 | 1.16 | 8 | | |
| 1565 | 1.40 | 14 | | |
| 1640 | 1.36 | 12 | | |
| 1820 | 1.38 | 12 | | |
| 1850 | 1.43 | 12 | | |
| 1860 | 1.50 | 12 | | |
| 1890 | 1.55 | 17 | | |
| 1955 | 1.65 | 17 | | |
| 2310 | 1.70 | 17 | | |
| 2390 | 1.74 | 16 | | |

| DRILL BIT CUTTINGS AND WET SAMPLES | | |
|------------------------------------|-------------------|-------------------|
| SAMPLE TYPE | INTERVAL BELOW KB | NUMBER OF SAMPLES |
| CUTTINGS | 230 - 2800 | 320 |
| WET SAMPLES | 230 - 2795 | 474 |



| SHALLOW GAS | |
|------------------------|------------------|
| DEPTH INTERVAL m KB | REMARKS |
| 340 - 342 | SANDY SHALE SONE |
| 483 - 485 | |
| 595 - 600 | |

GEOLOGICAL TOPS

WELL: 34/10-12

| | Depth m (RKB) |
|-----------------|---------------|
| Nordland Group | |
| Utsira Fm | 731 |
| Hordaland Group | 950 |
| Rogaland Group | 1633 |
| Balder Fm | 1633 |
| Lista Fm | 1687 |
| Shetland Group | 1807 |
| Brent Group | 2014 |
| Tarbert Fm | 2014 |
| Ness Fm | 2027 |
| Etive Fm | 2176 |
| Rannoch Fm | 2198 |
| Broom Fm | 2245 |
| Dunlin Group | 2257 |
| Drake Fm | 2257 |
| Cook Fm | 2350 |
| Burton Fm | 2471 |
| Amundsen | 2528 |
| Statfjord Fm | 2688 |
| | T.D. = 2800 |