

Well no : 34/10-20 X Operator : STATOIL

Coordinates	: 61 01 20.39 N 02 17 45.74 E	UTM coord.	: 6765639 N
		UTM zone 31	: 461951 E
Licence no	: 050	Permit no	: 399
Rig	: ROSS ISLE	Rig type	: SEMI-SUB.
Contractor	: ROSS DRILLING CO. A/S		
Bottom hole temperature	: 115 deg.C	Elev. KB	: 22 M
Spud date	: 83.12.23	Water depth	: 135 M
Compl. date	: 84.04.23	Total depth	: 3743 M
Spud class.	: WILDCAT	Age at TD	: CRETACEOUS
Compl. class.	: JUNKED		
Seis. loc.	: ST 8313 - 410 SP 220		

LICENSEES

9.000	NORSK HYDRO PRODUKSJON A.S
6.000	SAGA PETROLEUM A.S.
85.000	DEN NORSKE STATS OLJESELSKAP A.S

CASING AND LEAK-OFF TESTS

Type	Casing diam.	Depth below KB	Hole diam.	Hole depth below KB	Lot mud eqv. g/cm ³
CONDUCTOR	30	218.0	36	219.0	
SURF.COND.	20	1026.0	26	1039.0	1.51
INTERM.	13 3/8	2658.0	17 1/2	2720.0	1.85
INTERM.	9 5/8	3532.0	12 1/4	3607.0	2.04
LINER	7	3660.0	8 1/2	3665.0	2.15
OPEN HOLE			6	3746.0	

DRILL STEM TEST

NO DST'S WERE PERFORMED IN THIS WELL

DRILL BIT CUTTINGS AND WET SAMPLES

SAMPLE TYPE	INTERVAL BELOW KB	NUMBER OF SAMPLES
CUTTINGS	221 - 3745	520
WET SAMPLES	230 - 3745	520

SHALLOW GAS

INTERVAL
BELOW KB

REMARKS

NONE

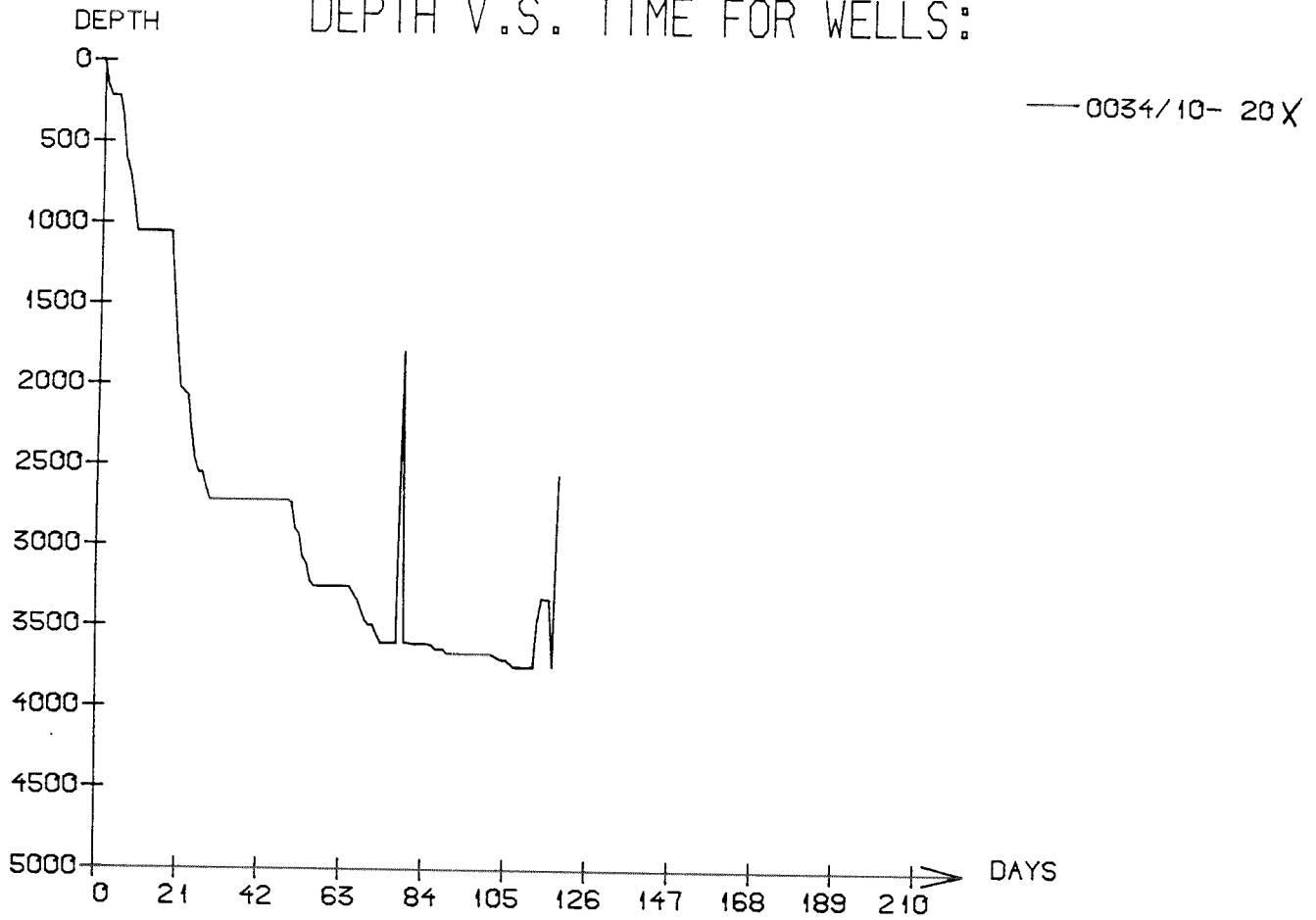
MUD PROPERTIES

Depth below KB meter	Mud weight g/cm ³	Mud type
221.0	1.06	WATER BASED
615.0	1.08	WATER BASED
1058.0	1.12	WATER BASED
1400.0	1.13	WATER BASED
2025.0	1.30	WATER BASED
2288.0	1.32	WATER BASED
2643.0	1.35	WATER BASED
2720.0	1.45	WATER BASED
2735.0	1.60	WATER BASED
3113.0	1.65	WATER BASED
3252.0	1.70	WATER BASED
3553.0	1.75	WATER BASED
3601.0	1.81	WATER BASED
3610.0	1.90	WATER BASED
3639.0	1.97	WATER BASED
3693.0	2.02	WATER BASED
3726.0	2.04	WATER BASED

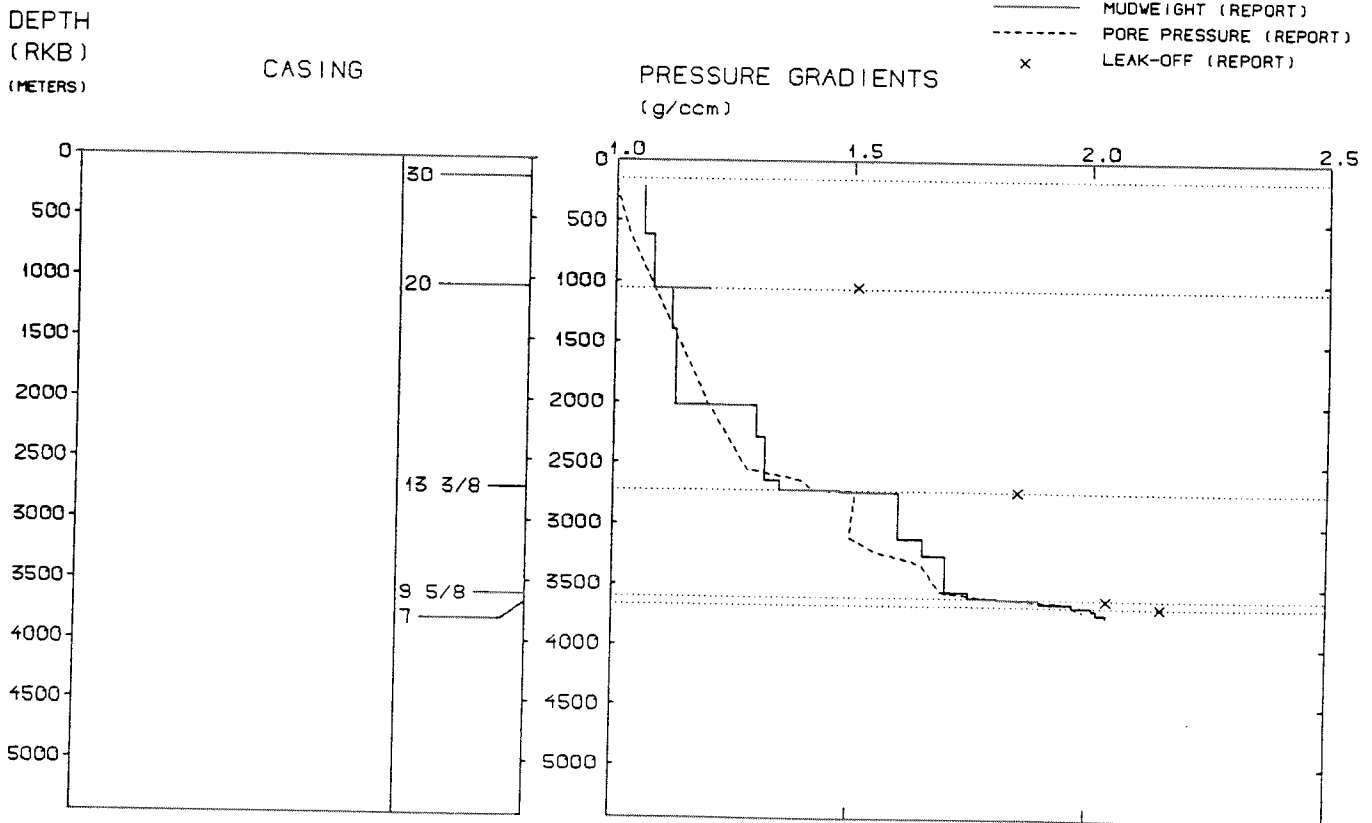
AVAILABLE LOGS

LOG TYPE	INTERVALS	1/200	1/500
ISF LSS MSFL GR	1026 - 2719	X	X
ISF LSS MSFL	2657 - 3546	X	X
ISF BHC MSFL	3532 - 3663	X	X
ISF BHC	3663 - 3743	X	X
BHC	3663 - 3699	X	X
LDL CNL	1026 - 2719	X	X
LDL CNL	2657 - 3546	X	X
LDL CNL	3532 - 3665	X	X
LDL CNL	3656 - 3744	X	X
CBL VDL CCL	1150 - 2656	X	
CBL VDL CCL	156 - 3530	X	
CBL VDL CCL	3430 - 3627	X	
CBL VDL CCL	3625 - 3627	X	
CBL VDL CCL	3525 - 3656	X	
VELOCITY	1026 - 3743		X
(VSP	165 - 3742		1 stk)

DEPTH V.S. TIME FOR WELLS:



WELL: 003410 20X PRESSURE COMPOSITE PLOT



WELL HISTORY - 34/10-20 X

GENERAL:

The primary objective of the wildcat 34/10-20 X was the Middle Jurassic Brent Group. Secondary objectives were Lower Cretaceous sandstones, the Cook Formation and the Statfjord Formation. The well was plugged back without reaching the objectives due to high pressures.

OPERATIONS:

The well was spudded 23.12.83 by the semi-submersible rig Ross Isle. No cores were cut in the well.

In the 17 1/2" hole section tight hole was experienced in several intervals. The 13 3/8" casing got stuck during setting. Several attempts to ream the hole had to be done before the casing was successfully set.

The mudweight was steadily raised in response to increasing pore pressure and gas levels in the 12 1/4" hole.

A cement plug was set from 2558 m to 2653 m to secure the hole while pulling and repairing the BOP stack.

Wiper trips were taken to keep gas levels down.

A cement plug was set from 3606 m to secure the hole, before setting of the 9 5/8" casing at 3532 m.

After drilling down to 3665 m, it was decided to run 7" liner due to high pressures and lost circulation.

Lost circulation also occurred in the 6" hole, the well was junked with a TD of 3743 m.

The well was drilled using water based mud.

TESTING:

The well was not tested.

GEOLOGICAL TOPS

WELL: 34/10-20 X

	<i>Depth m (RKB)</i>
<i>Nordland Group</i>	<i>157.000</i>
<i>Utsira Fm</i>	<i>710.000</i>
<i>Hordaland Group</i>	<i>988.000</i>
<i>Balder Fm</i>	<i>1868.000</i>
<i>Sele/Lista Fm</i>	<i>1930.000</i>
<i>Shetland Group</i>	<i>2088.000</i>
 <i>TD =</i>	 <i>3743.000</i>