

Well no : 7119/ 7-01

Operator : HYDRO

Coordinates	: 71 23 42.40 N 19 15 18.43 E	UTM coord.	: 7922575 N 437872 E
Licence no	: 076	Permit no	: 380
Rig	: TREASURE SEEKER	Rig type	: SEMI-SUB.
Contractor	: WILHELMSSEN OFFSHORE SERVICES		
Bottom hole temperature	: 118 deg.C	Elev. KB	: 25 M
Spud. date	: 83.07.12	Water depth	: 238 M
Compl. date	: 83.09.11	Total depth	: 3167 M
Spud. class	: WILDCAT	Form. at TD	: BASEMENT
Compl. class	: P&A. DRY HOLE	Prod. form	:
Seisloca	: NH 8205 - 412 SP: 466		

LICENSEES

 10,000 A/S NORSKE SHELL LETE-OG UTVINNINGSAVDELINGEN
 50,000 DEN NORSKE STATS OLJESELSKAP A.S
 15,000 ELF AQUITAINE NORGE A/S
 25,000 NORSK HYDRO PRODUKSJON A.S

CASING AND LEAK-OFF TESTS

Type	Casing diam.	Depth below KB	Hole diam.	Hole depth below KB	Lot mud eqv. g/cm3
-----	-----	-----	-----	-----	-----
CONDUCTOR	30	326,0	36	333,0	
SURF.COND.	20	532,0	26	622,0	1,35
INTERM.	13 3/8	1254,0	17 1/2	1269,0	
INTERM.	9 5/8	2501,0	12 1/4	2518,0	
OPEN HOLE			8 3/8	3167,0	

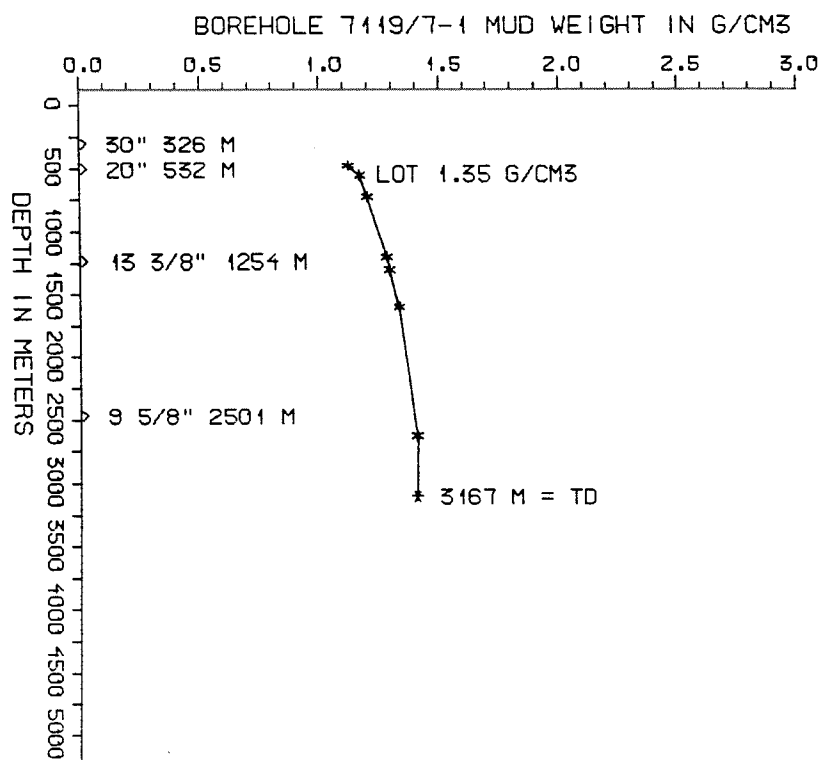
DRILL STEM TEST									
TEST NO	DEPTH BELOW KB	CHOKE SIZE mm	RECOVERY					PRESS. (psi)	
			OIL Sm ³ /d	GAS M Sm ³ /d	OIL GRAV. g/cm ³	GAS GRAV. rel. air	GOR m ³ /m ³	WHFP	BHFP
	NONE								

AVAILABLE LOGS			
LOG TYPE	INTERVALS	1/200	1/500
ISF LSS GR (GR:250-325)	325 - 618	X	X
ISF LSS	531 - 1259	X	X
ISF LSS	1252 - 2514	X	X
ISF LSS	2494 - 3165	X	X
LDL CNL	325 - 619	X	X
LDL CNL	531 - 1259	X	X
LDL CNL	1252 - 2514	X	X
LDL CNL	2493 - 3165	X	X
MERGED COMPOSITE PLAYBACK	325 - 3165	1:1000	X
CDM	1252 - 2514	X	
CDM	2493 - 3137	X	
CDM AP	1253 - 2515	X	X
CDM AP	2493 - 3137	X	X
DXC NXB	263 - 3167	1:5000	
TEMPERATURE DATA	263 - 3167	1:5000	
DRILLING DATA PRESSURE	263 - 3167	1:5000	
MUD	263 - 3167		X
VELOCITY	325 - 3164		X
(Seismic VSP, run 1, 350-2515 m,			1 stk)
(VSP, run 2, 2437-3090			1 stk)

MUD PROPERTIES			
DEPTH BELOW KB m	WEIGHT g/cm ³	FUNNEL VISC. sec	FILTRATE LOSS cm ³
400	1.09	55	
500	1.14	56	
650	1.17	51	
1150	1.25	49	
1250	1.26	55	
1530	1.30	52	
2530	1.37	42	

DRILL BIT CUTTINGS AND WET SAMPLES		
SAMPLE TYPE	INTERVAL BELOW KB	NUMBER OF SAMPLES
CUTTINGS	330-3165	570
WET SAMPLES	340-3165	600

SHALLOW GAS	
DEPTH INTERVAL m KB	REMARKS
	NONE



WELL HISTORY - 7119/7-1

GENERAL:

The primary objective of wildcat 7119/7-1 was to test a sandstone and/or limestone reservoir of Upper Cretaceous age. The secondary objective of the well was to test a westward thinning wedge interpreted as a sandstone reservoir of Upper Cretaceous age. A further objective of the well was to penetrate the Cenomanian unconformity with possible associated basal sandstones. No rocks with reservoir qualities were penetrated by this well.

OPERATIONS:

The well was spudded 12.07.83 by the semi-submersible rig Treasure Seeker. No cores were cut in this well. No major problems occurred during drilling. The well was drilled using waterbased mud.

TESTING:

The well was not tested.

GEOLOGICAL TOPS
WELL 7119/7-1

	Depth m (RKB)
Nordland Group	263,0
Sotbakken Group	440,0
Torsk Fm	440,0
Nygrunnen Group	1332,0
Kviting Fm	1332,0
Nordvestbanken Group	2530,0
Kolmule Fm	2530,0
TD =	3167,0