

Well no : 34/10-18 Operator : STATOIL

Coordinates : 61 14 22.48 N UTM coord. : 6790000 N  
02 03 18.83 E 449285 E

Licence no : 050 Permit no : 382

Rig : ROSS ISLE Rig type : SEMI-SUB.

Contractor : ROSS DRILLING CO. A/S

Bottom hole temperature : 90 deg.C Elev. KB : 22 M

Spud. date : 83.07.16 Water depth : 141 M

Compl. date : 83.08.30 Total depth : 3025 M

Spud. class : WILDCAT Form. at TD : L.JURASSIC

Compl. class : P&A. DRY HOLE Prod. form :

Seisloca : ST 8214 - 402 SP 190

## LICENSEES

9,000 NORSK HYDRO PRODUKSJON A.S  
6,000 SAGA PETROLEUM A.S  
85,000 DEN NORSKE STATS OLJESELSKAP A.S

## CASING AND LEAK-OFF TESTS

Type	Casing diam.	Depth below KB	Hole diam.	Hole depth below KB	Lot mud eqv. g/cm <sup>3</sup>
CONDUCTOR	30	226,5	36	227,5	
SURF.COND.	20	747,0	26	765,0	1,57
INTERM.	13 3/8	2008,0	17 1/2	2024,0	1,80
OPEN HOLE			12 1/4	3025,0	

## CONVENTIONAL CORES

Core no.	Intervals cored meters	Recovery		Series
		M	%	
1	2343.5 - 2361.0	13.7	78.3	CRETACEOUS/JURASSIC
2	2361.0 - 2368.0	7.0	100.0	UPPER JURASSIC
3	2376.5 - 2395.0	18.5	100.0	MIDDLE JURASSIC

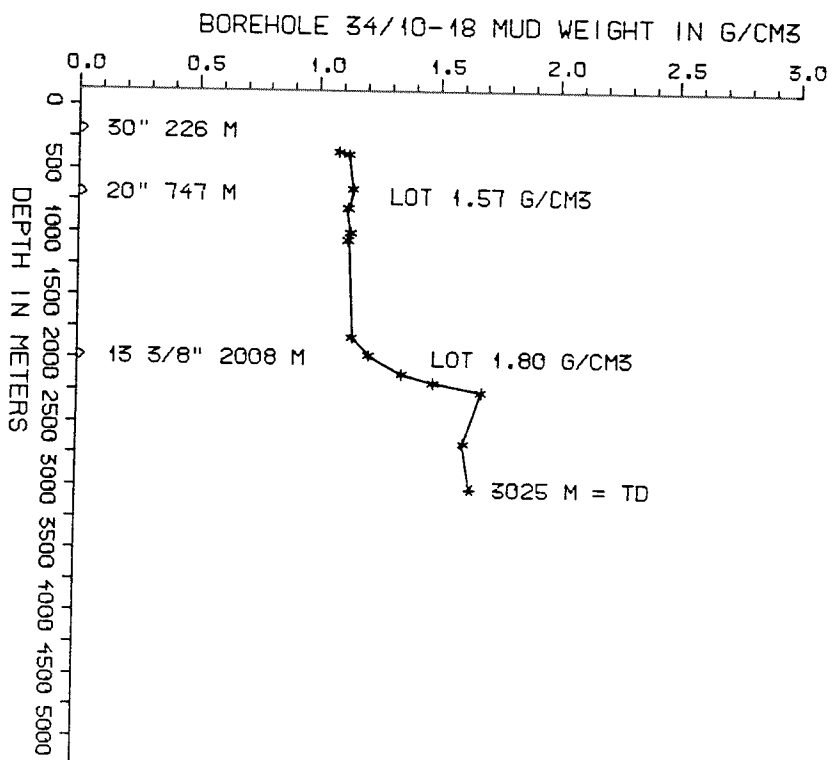
DRILL STEM TEST									
TEST NO	DEPTH BELOW KB	CHOKE SIZE mm	RECOVERY					PRESS. (psi)	
			OIL Sm <sup>3</sup> /d	GAS M Sm <sup>3</sup> /d	OIL GRAV. g/cm <sup>3</sup>	GAS GRAV. rel. air	GOR m <sup>3</sup> /m <sup>3</sup>	FSIP	WHP
	NONE								

AVAILABLE LOGS			
LOG TYPE	INTERVALS	1/200	1/500
ISF LSS MSFL	155 - 765	X	X
ISF LSS	747 - 2000	X	X
ISF LSS MSFL	2007 - 3024	X	X
LDL CNL	227 - 765	X	
LDL	747 - 2000	X	
LDL CNL	2007 - 3025	X	
LDL CNL	227 - 3025		X
CDM	2007 - 3025	X	
CDM AP	2010 - 3022	X	
SHDT	2007 - 3025	X	
RFT	2330 - 2543	1:100	
CBL	162 - 2007	X	
MUD	230 - 3025		X
VELOCITY (S.C.L.)	155 - 3024		X
(V.S.P.	822 - 3024		1 stk)
(Seismic logs, PLOT 1-8			8 stk)
(V.S.P. logs, PLOT 9-21			13 stk)
(Synthetic Seismogram, geogram, PLOT 22-23			2 stk)
(Synthetic Seismogram, geogram, 10 cm/s			5 stk)
(Synthetic Seismogram, geogram, 10 cm/s			1 stk)

MUD PROPERTIES			
DEPTH BELOW KB m	WEIGHT g/cm <sup>3</sup>	FUNNEL VISC. sec	FILTRATE LOSS cm <sup>3</sup>
270	1.05	47	
370	1.09	45	
600	1.11	43	
750	1.09	50	
900	1.10	55	
1000	1.09	53	
1780	1.11	62	
1930	1.18	68	
2050	1.32	54	
2140	1.45	55	
2230	1.65	45	
2660	1.58	48	

DRILL BIT CUTTINGS AND WET SAMPLES		
SAMPLE TYPE	INTERVAL BELOW KB	NUMBER OF SAMPLES
CUTTINGS	230-3025	560
WET SAMPLES	230-3065	750

SHALLOW GAS	
DEPTH INTERVAL m KB	REMARKS
230 376	



## WELL HISTORY - 34/10-18

### GENERAL:

The wildcat 34/10-18 was drilled to test the fault structure in the north-west segment of block 34/10. The primary objective in this prospect was the Brent Group sandstones of Middle Jurassic age. Secondary prospects were Lower Jurassic Cook and Statfjord Formation Sandstones. Only residual hydrocarbons were encountered in the Brent sandstones. The well was plugged as a dry hole.

### OPERATIONS:

34/10-18 was spudded 16.07.83 by the semi-submersible rig Ross Isle. Three cores were cut in this well. One from the Lower Cretaceous and into the Upper Jurassic and a second in the Upper Jurassic Heather Formation. A third core was cut in the Middle Jurassic Tarbert Formation.

After cementing the 30" casing a 12 1/4" pilot hole was drilled to 765 m. Lost circulation to shallow sandlenses occurred while reaming this section to 26". A 17 1/2" hole was drilled and logged to 2024 m. Two joints of 13 3/8" casing were dropped in the hole. The hole was cemented back to 1882 m and sidetracked from 1900 m. The well was drilled with waterbased mud.

### TESTING:

The well was not tested.

GEOLOGICAL TOPS  
WELL 34/10-18

	Depth m (RKB)
Nordland Group	163,0
Utsira Fm	822,0
Hordaland Group	902,0
Rogaland Group	1689,5
Sele/Balder Fm	1689,5
Lista Fm	1750,0
Shetland Group	1878,0
Cromer Knoll Group	2340,0
Viking Group	2351,0
Draupne Fm	2351,0
Heather Fm	2355,0
Brent Group	2372,5
Tarbert Fm	2372,5
Ness Fm	2412,0
Etive Fm	2495,0
Rannoch Fm	2524,0
Broom Fm	2595,0
Dunlin Group	2604,0
Drake Fm	2604,0
Cook Fm	2687,5
Amundsen Fm	2842,5
Statfjord Fm	2978,0
TD =	3025,0