

Well no : 6609/10-01

Operator : SAGA

Coordinates	: 66 14 42.27 N 09 14 59.50 E	UTM coord.	: 7347436 N 511231 E
Licence no	: 082	Permit no	: 383
Rig	: TREASURE SAGA	Rig type	: SEMI-SUB.
Contractor	: WILHELMSSEN OFFSHORE SERVICES		
Bottom hole temperature	: 56 deg.C	Elev. KB	: 26 M
Spud. date	: 83.08.02	Water depth	: 263 M
Compl. date	: 83.08.29	Total depth	: 2166 M
Spud. class	: WILDCAT	Form. at TD	: TRIASSIC
Compl. class	: P&A. DRY HOLE	Prod. form	:
Seisloca	: 8102-208 SP:6340		

LICENSEES

50,000 DEN NORSKE STATS OLJESELSKAP A.S
 30,000 ESSO NORGE A.S
 10,000 NORSK HYDRO PRODUKSJON A.S
 10,000 SAGA PETROLEUM A.S

CASING AND LEAK-OFF TESTS

Type	Casing diam.	Depth below KB	Hole diam.	Hole depth below KB	Lot mud eqv. g/cm ³
CONDUCTOR	30	413,0	36	415,0	1,38
SURF.COND.	20	654,0	26	668,0	1,56
INTERM.	13 3/8	1247,0	17 1/2	1265,0	1,87
OPEN HOLE			12 1/4	2166,0	

CONVENTIONAL CORES

Core no.	Intervals cored meters	Recovery		Series
		M	%	
1	1644.0 - 1655.5	11.5	100.0	LOWER JURASSIC
2	1798.0 - 1808.4	9.4	90.4	LOWER JURASSIC

DRILL STEM TEST									
TEST NO	DEPTH BELOW KB	CHOKE SIZE mm	RECOVERY					PRESS. (psi)	
			OIL Sm ³ /d	GAS M Sm ³ /d	OIL GRAV. g/cm ³	GAS GRAV. rel.air	GOR m ³ /m ³	WHFP	BHFP
	NONE								

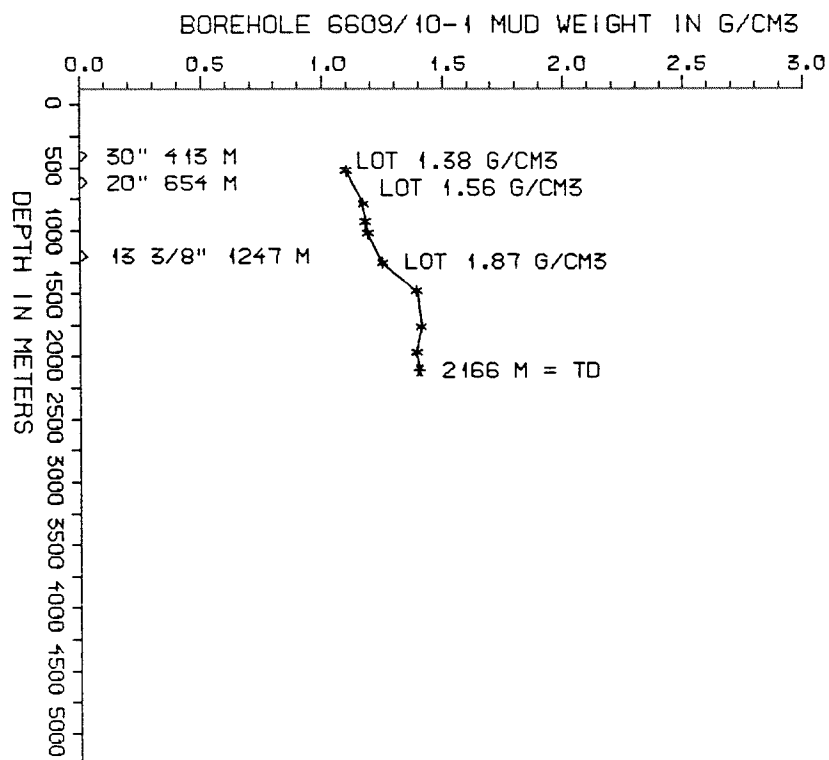
AVAILABLE LOGS			
LOG TYPE	INTERVALS	1/200	1/500
DIFL BHC AC GR	288 - 666	X	X
DIFL BHC AC	653 - 1265	X	X
DIFL BHC AC	1246 - 2167	X	X
FDC CNL	653 - 1264	X	X
FDC CNL	1246 - 2164	X	X
CDM	1246 - 2166	X	
CDM AP	1246 - 2166	X	X
STRATADIP	1246 - 2166	X	
SPECTRALOG	1600 - 2158	X	X
CALIPER	375 - 667	X	X
FMT	1375 - 1973		X
TEMPERATURE DATA LOG	413 - 2166	1:5000	
DRILL. DATA PRESSURE LOG	290 - 2166	1:5000	
WIRELINE DATA PRESS. LOG	415 - 2166	1:5000	
PRESSURE EVALUATION LOG	290 - 2166	1:5000	
CBL VDL AC	300 - 1247	X	
MUD	290 - 2166		X
VELOCITY (S.C.L.)	413 - 2165	1:1000	X

(Synt. Seismogr. Geogr., 10-20 cm/s, n/r. pol. 11 stk)
(VSP Plot 1-25 25 stk)

MUD PROPERTIES			
DEPTH BELOW KB m	WEIGHT g/cm ³	FUNNEL VISC. sec	FILTRATE LOSS cm ³
450	1.07	60	
710	1.14	45	
840	1.15	41	
920	1.16	39	
1210	1.22	53	
1405	1.36	41	
1705	1.38	62	
1900	1.36	50	

DRILL BIT CUTTINGS AND WET SAMPLES		
SAMPLE TYPE	INTERVAL BELOW KB	NUMBER OF SAMPLES
CUTTINGS	420-2166	275
WET SAMPLES	420-2166	304

SHALLOW GAS	
DEPTH INTERVAL m KB	REMARKS
	NONE



WELL HISTORY - 6609/10-1

GENERAL:

The objective of wildcat 6609/10-1 was to test the entire stratigraphic column between the seabed and into Upper Triassic. The primary target of the well was Jurassic sandstones of the Nordland Rigde, and secondary objective was to test possible sand development in the Paleocene. The well was plugged and abandoned as a dry hole.

OPERATIONS:

6609/10-1 was spudded 02.08.83 by the semi-submersible rig Treasure Saga. Two cores were cut in the Lower Jurassic sequence. The well was drilled using waterbased mud.

TESTING:

The hole was not tested.

GEOLOGICAL TOPS
WELL 6609/10-1

	Depth m (RKB)
Nordland Group	288,0
Hordaland Group	1312,0
Rogaland Group	1405,0
Tare Fm	1405,0
Tang Fm	1469,0
Shetland Group	1509,0
Fangst Group	1605,0
Båt Group	1642,0
Triassic	1993,0
Grey Beds	1993,0
Red Beds	2102,0
TD=	2166,0