

Well no : 2/ 5-07

Operator : SHELL

Coordinates	: 56 43 16.69 N 03 22 1.07 E	UTM coord.	: 6286563 N
		UTM zone 31	: 522459 E
Licence no	: 067	Permit no	: 384
Rig	: NEDDRILL TRIGON	Rig type	: JACK-UP
Contractor	: NEDDRILL (NEDERLAND) B.V.		
Bottom hole temperature	: 157 deg.C	Elev. KB	: 34 M
Spud date	: 83.08.11	Water depth	: 66 M
Compl. date	: 84.02.24	Total depth	: 4531 M
Spud class.	: WILDCAT	Age at TD	: TRIASSIC
Compl. class.	: P&A. OIL DISCOVERY		
Seis. loc.	: 82-408 SP 253 AND NS-19 SP 301		

## LICENSEES

10.000	NORSK AGIP A/S
10.000	PHILLIPS PETROLEUM CO NORWAY
30.000	A/S NORSKE SHELL
50.000	DEN NORSKE STATS OLJESELSKAP A.S

## CASING AND LEAK-OFF TESTS

Type	Casing diam.	Depth below KB	Hole diam.	Hole depth below KB	Lot mud eqv. g/cm <sup>3</sup>
CONDUCTOR	30	156.0	36	156.3	
SURF.COND.	20	851.5	26	864.0	1.90
INTERM.	13 3/8	2244.0	17 1/2	2272.0	1.89
INTERM.	9 5/8	3988.0	12 1/4	4007.0	
LINER	7	3993.0	8 1/2	4007.0	2.15
OPEN HOLE			5 3/4	4531.0	

## CONVENTIONAL CORES

Core no.	Intervals cored meters	Recovery		Series
		M	%	
1	3303.0 - 3312.0	5.4	60.0	UPPER CRETACEOUS
2	3312.0 - 3326.5	9.1	62.8	UPPER CRETACEOUS
3	3326.5 - 3337.5	9.0	81.8	UPPER CRETACEOUS
4	3337.5 - 3337.5	0.0	0.0	UPPER CRETACEOUS
5	3339.0 - 3348.5	9.2	96.8	UPPER CRETACEOUS

## MUD PROPERTIES

Depth below KB meter	Mud weight g/cm <sup>3</sup>	Plastic viscosity mPa.s	Mud type
150.0	1.03	8.0	WATER BASED
400.0	1.08	8.0	WATER BASED
1175.0	1.10	20.0	WATER BASED
1400.0	1.18	18.0	WATER BASED
1510.0	1.20	27.0	WATER BASED
1630.0	1.22	18.0	WATER BASED
1780.0	1.24	24.0	WATER BASED
1990.0	1.40	27.0	WATER BASED
2270.0	1.65	28.0	WATER BASED
2475.0	1.66	41.0	WATER BASED
3630.0	1.67	30.0	WATER BASED
4140.0	1.90	31.0	WATER BASED
4235.0	1.93	37.0	WATER BASED
4330.0	1.95	26.0	WATER BASED
4520.0	2.08	30.0	WATER BASED

## DRILL STEM TEST

## INTERVALS AND PRESSURES

Test no.	Interval meter	Choke size	Pressure (PSI)		
			FSIP	BTHP	WHP
1.0	3335.0 - 3300.0	7.9		5075.0	782.0
2.0	3287.0 - 3263.0	14.3		4250.0	207.0
3.0	3225.0 - 3210.0	OPEN PIPE		4690.0	0.0

## RECOVERY

Test no.	Oil Sm <sup>3</sup> /d	Gas M Sm <sup>3</sup> /d	Oil grav. g/cm <sup>3</sup>	Gas grav. rel. air	GOR m <sup>3</sup> /m <sup>3</sup>
1.0	120	0	0.820	0.830	842
2.0	121	0	0.820	0.960	1515
3.0					

## DRILL BIT CUTTINGS AND WET SAMPLES

SAMPLE TYPE	INTERVAL BELOW KB	NUMBER OF SAMPLES
-------------	----------------------	----------------------

CUTTINGS

WET SAMPLES 150 - 4531 750

## SHALLOW GAS

INTERVAL BELOW KB	REMARKS
----------------------	---------

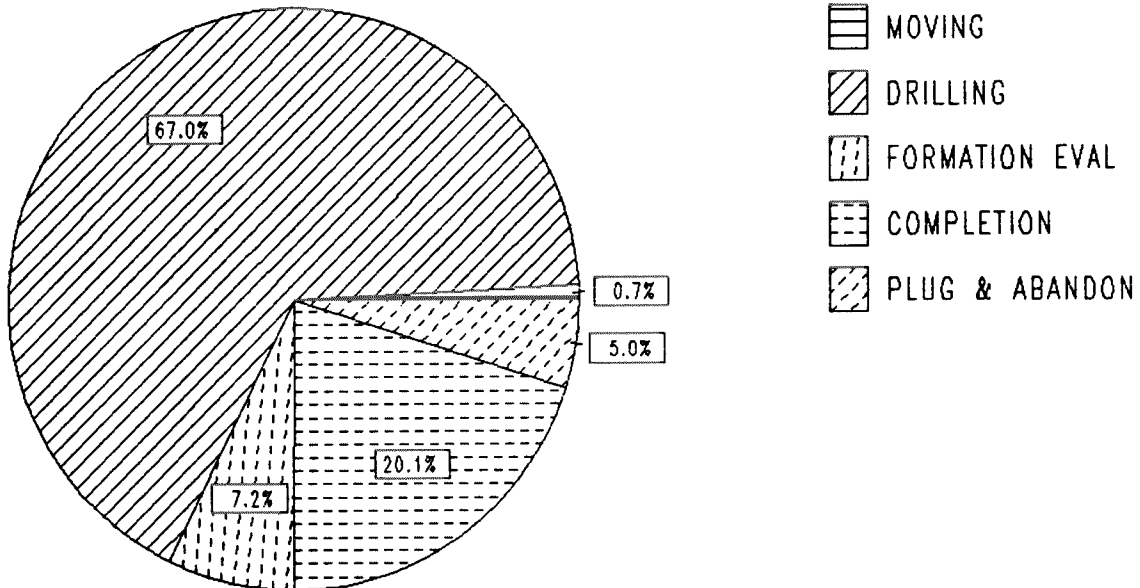
NONE

## AVAILABLE LOGS

LOG TYPE	INTERVALS	1/200	1/500
ISF SLS GR (GR:100-156M)	156 - 858	X	X
ISF SLS	852 - 2264	X	X
ISF SLS	2243 - 3529	X	X
ISF SLS	3480 - 3994	X	X
ISF SLS	3995 - 4365	X	X
ISF SLS	4365 - 4531	X	X
LDL CNL	156 - 857	X	X
LDL CNL	852 - 2265	X	X
LDL CNL	2243 - 3529	X	X
LDL CNL	3150 - 3995	X	X
LDL CNL	3995 - 4366	X	X
LDL CNL	3995 - 4531	X	X
MERGE ISF SLS LDL CNL	156 - 857		X
MERGE ISF SLS LDL CNL	852 - 2265		X
MERGE ISF SLS LDL CNL	2243 - 3529		X
MERGE ISF SLS LDL CNL	3480 - 3995		X
MERGE ISF SLS LDL CNL	3995 - 4366		X
MERGE ISF SLS LDL CNL	4365 - 4531		X
DLL MSFL	3150 - 3675	X	X
CDM	2243 - 3994	X	X
CDM	3995 - 4532	X	X
CDM AP	2231 - 3990	X	X
CDM AP	3996 - 4533	X	X
4 ARM CALIPER	95 - 150	X	
4 ARM CALIPER	101 - 3978	X	
THERMOMETER	101 - 2700		X
RFT	3216 - 3512	X	
RFT	3236 - 3765	X	
RFT HP	3236 - 3765	X	
D.L.W.D.	899 - 4000		X
CASING INSPECTION	10 - 1870	X	
CBL VDL CCL	101 - 2243	X	
CBL VDL CCL	850 - 3984	X	
PRESSURE EVALUATION	146 - 4531	1:5000	
DRILLING DATA PRESSURE	146 - 4531	1:5000	
WIRELINE DATA PRESSURE	146 - 4531	1:5000	
TEMPERATURE DATA	146 - 4531	1:5000	
MUD	146 - 4531		X
VELOCITY (L.T.S.)	156 - 4531	1:1000	X
(+ Airgun Well Velocity Survey & C.L.D.		1 stk)	
(+ Two Way Travel Time, 10 cm/s,		1 stk)	
(+ Synthetic Seismogram Marine, 10 cm/s,		1 stk)	
(+ Synthetic Seismogram, b/p-w/t, 10 cm/s,		2 stk)	

# DAILY DRILLING REPORT SYSTEM

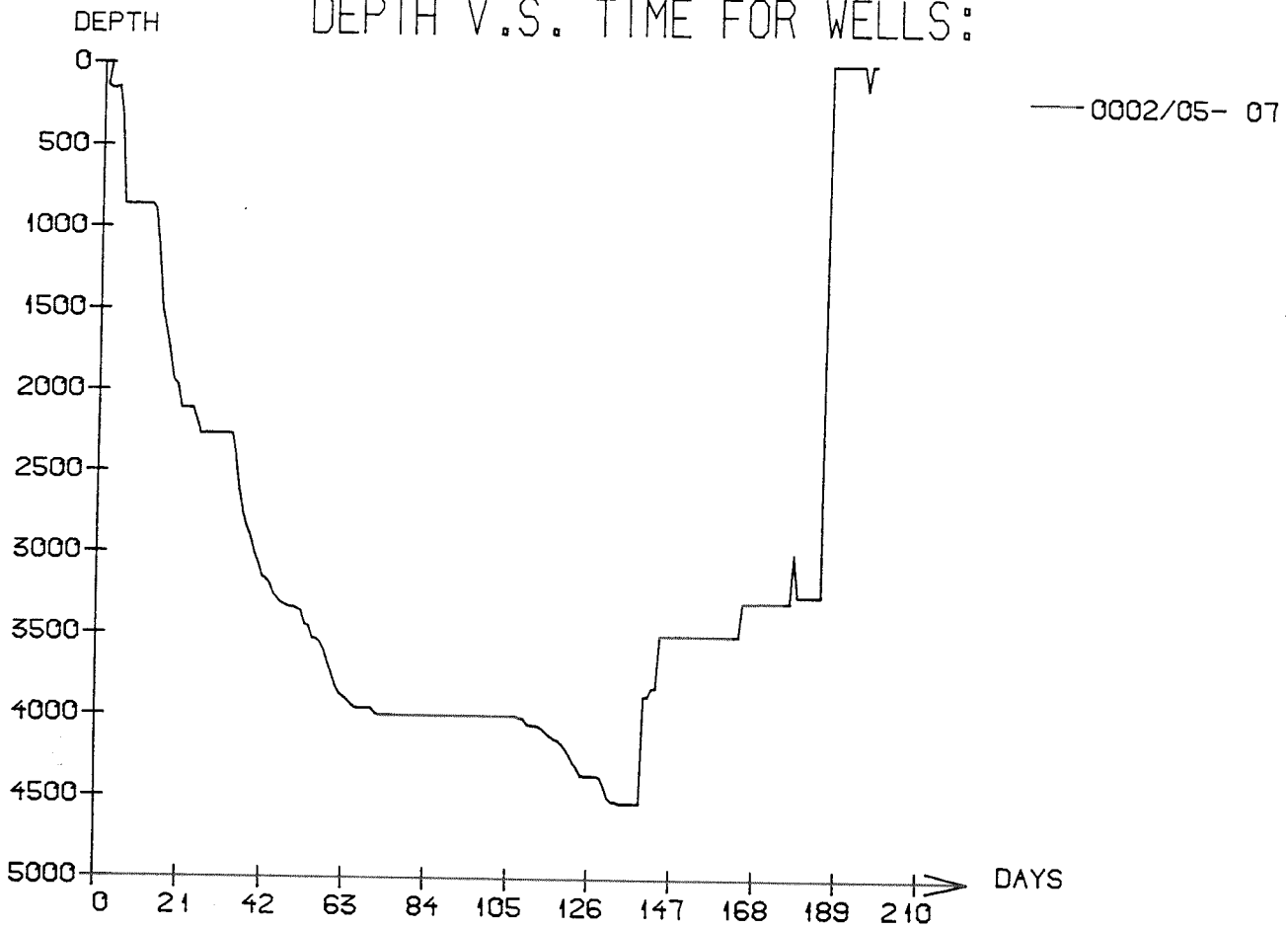
Main operation : 02/05-07



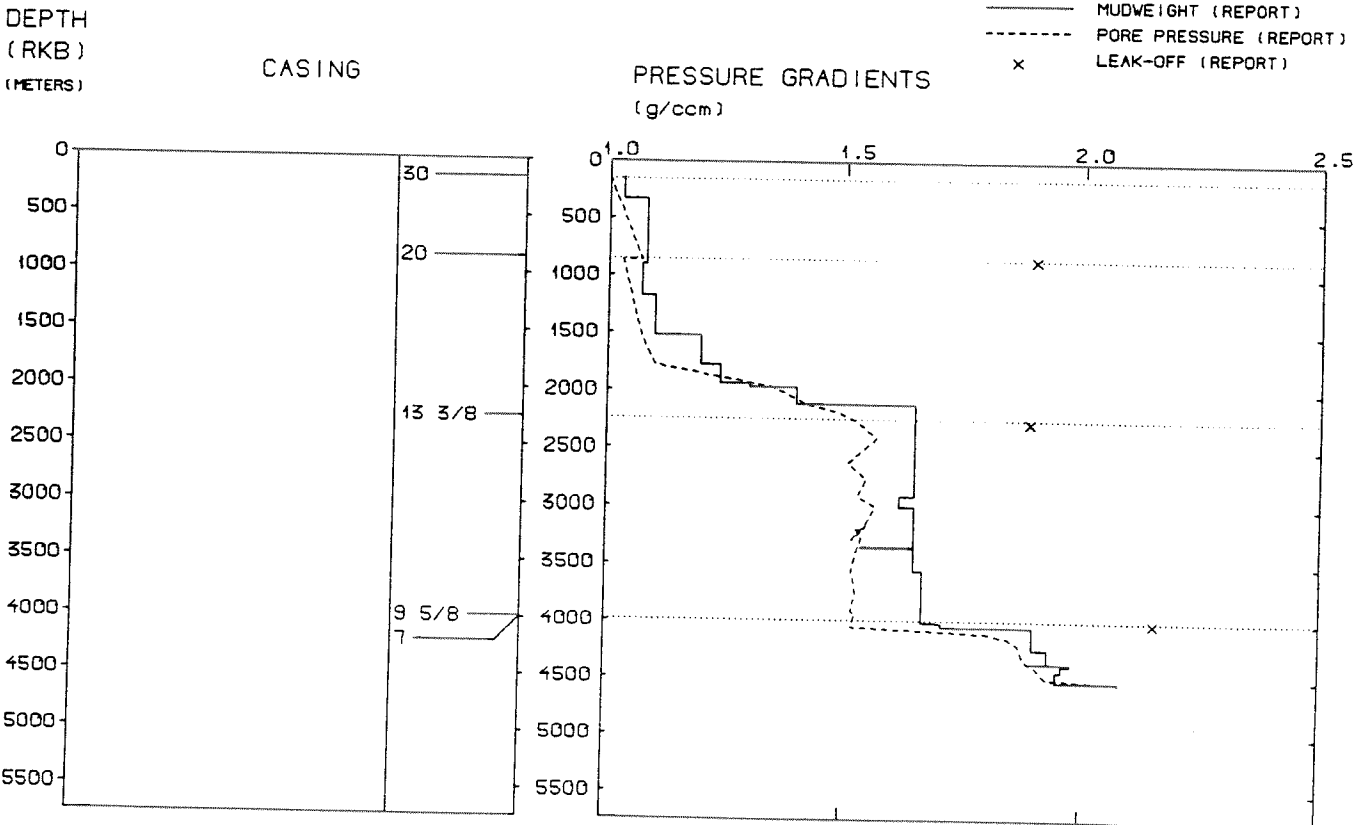
Total : 4786,00 HRS

Main operation	Hours	% of total
MOVING	35,00	0,73
DRILLING	3205,50	66,98
FORMATION EVAL	345,00	7,21
COMPLETION	963,00	20,12
PLUG & ABANDON	237,50	4,96

DEPTH V.S. TIME FOR WELLS:



WELL: 000205 07 PRESSURE COMPOSITE PLOT



## WELL HISTORY - 2/5-7

### GENERAL:

The main objectives of the wildcat 2/5-7 were Upper Jurassic and Middle Jurassic/Triassic sandstones. Secondary objectives were Upper Cretaceous chalk and Paleocene sandstones. Oil shows were observed in the Upper Cretaceous Tor Formation, no other hydrocarbon bearing intervals were encountered by this well.

### OPERATIONS:

The well was spudded 11.08.83 by the jack-up Neddrill Trigon. Five cores were cut in the Upper Cretaceous sequence. During drilling of the 17 1/2" hole several tight spots and problems with cavings were experienced. Core no.4 showed no progress due to junk in the 12 1/4" hole. While tripping out of the hole at 3956 m, the drill string parted and 193 m of the bottom hole assembly was left in the hole. The fish was recovered after some problems due to tight hole conditions. When pressure testing the 9 5/8" casing the float collar sheared out causing the casing to jump. After re-landing, the casing was found to have dropped a couple of inches. After some problems with cutting/recovery of the casing it was decided to run a "guide" 9 5/8" casing string and cement it to seabed, before running a full 7" casing string with shoe 5 m below the 9 5/8" casing shoe. A drilling break occurred at 4161 m in the 5 3/4" hole. A kick was taken at 4519 m with an influx of 2.5 m<sup>3</sup> water. The well was drilled using water based mud.

### TESTING:

Tree DST's were performed, two in the Lower Tertiary sequence and one in the Upper Cretaceous sequence. The two first tests produced oil and water. Results from the third test showed that the formation was tight and water bearing.

# GEOLOGICAL TOPS

WELL: 2/ 5-07

Depth m (RKB)

<i>Nordland Group</i>	100.000
<i>Hordaland Group</i>	1558.000
<i>Rogaland Group</i>	3027.500
<i>Shetland Group</i>	3204.000
<i>Ekofisk Fm</i>	3204.000
<i>Tor Fm</i>	3289.000
<i>Hod Fm</i>	3726.000
<i>Blodøks Fm</i>	4069.000
<i>Cromer Knoll Group</i>	4087.000
<i>Åsgard Fm</i>	4087.000
<i>Tyne Group</i>	4108.000
<i>Mandal Fm</i>	4108.000
<i>Farsund Fm</i>	4121.000
<i>Vestland Group</i>	4346.500
<i>Ula Fm</i>	4346.500
<i>Triassic</i>	4387.000
<i>Skagerak Fm</i>	4387.000
<i>TD =</i>	4531.000