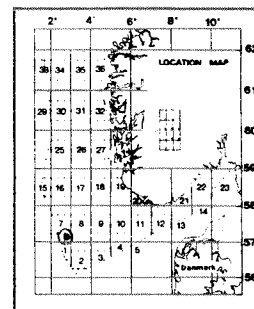


WELL NO : 7/12- 6 OPERATOR : BP
 COORDINATES : 57 07 16.85 N UTM COORD. : 6331047.68 N
 2 50 4.14 E 489977.52 E
 LICENCE NO : 019 PERMIT NO : 0282
 RIG : SEDCO 707
 CONTRACTOR : SEDCO INC.
 BOTTOM HOLE TEMPERATURE : 118 DEG.C ELEV. KB : 25 M
 SPUD DATE : 81.04.10 WATER DEPTH : 69 M
 COMPL. DATE : 81.07.24 TOTAL DEPTH : 3700 M
 SPUD. CLASS. : APPRAISAL FORM. AT TD : TRIASSIC
 COMPL. CLASS. : P&A. OIL DISC. PROD. FORM :
 SEISLOCA : CN7 - 111 SP: 584.



LICENSEES :

57,500 % BP PETROLEUM DEVELOPMENT OF NORWAY A/S
 10,000 % CONOCO NORWAY INC.
 5,000 % A/S PELICAN & CO K/S
 12,500 % DEN NORSKE STATS OLJESELSKAP A/S
 15,000 % SVENSKA PETROLEUM EXPLORATION A/B

CONVENTIONAL CORES

Core no.	Intervals cored meters	Recovery		Series
		M	%	
1	3406,7 - 3434,3	27,6	100,0	M. JURASSIC
2	3434,3 - 3461,6	26,7	97,8	"
3	3461,6 - 3488,6	27,0	100,0	"
4	3488,6 - 3515,4	26,8	100,0	"
5	3515,4 - 3542,7	27,3	100,0	JURA/TRIASSIC?
6	3542,7 - 3569,7	27,0	100,0	TRIASSIC?
7	3569,7 - 3595,7	27,0	103,8	"
8	3596,7 - 3624,3	27,5	99,6	"
9	3624,3 - 3647,1	22,9	100,0	"

CASING AND LEAK-OFF TESTS

Type	Casing diam.	Depth below KB	Hole diam.	LOT depth below KB	LOT mud eqv. g/cm
CONDUCTOR	30	167,0	36	172,0	00,00
SURF. COND.	18 5/8	465,0	17 1/2	480,0	01,88
INTERM.	13 3/8	1684,0	17 1/2	1696,0	01,83
INTERM.	9 5/8	3337,0	12 1/4	3350,0	01,97
LINER	7	3688,0	8 1/2	3700,0	00,00

DRILL STEM TEST

TEST NO	FLOW NO	DEPTH BELOW KB	CHOKE SIZE mm	RECOVERY						PRESS. (psi)	
				OIL Sm ³ /day	GAS M Sm ³ /day	OIL GRAV. g/cm ³	GAS GRAV. rel. air	GOR m ³ /m ³	OTHER FLUIDS/ REMARKS	FSIP	FFP
1		3544.0- 3612.5	11.9	427	18349	0.816	0.828	42900		4427	
2		3434.5- 3511.5	12.7	1270	84.5	0.842	0.840	66.5		6874	

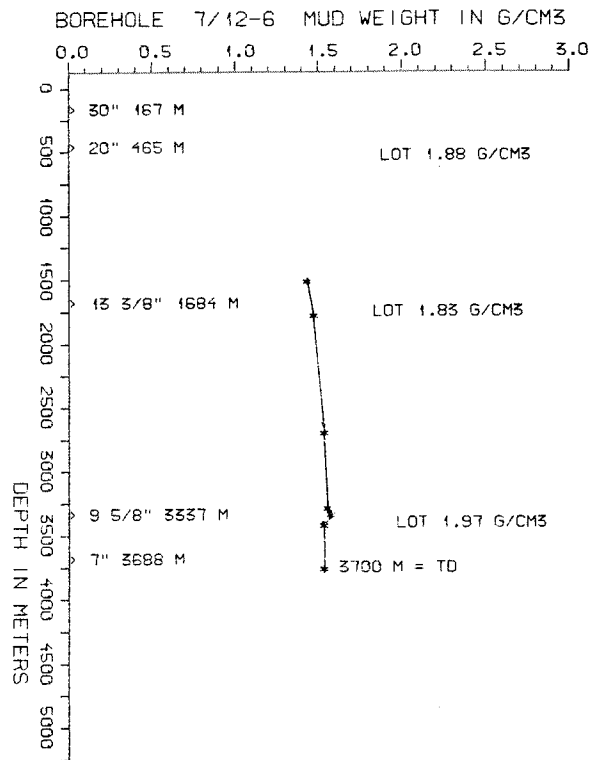
AVAILABLE LOGS			
LOG TYPE	INTERVALS	1/200	1/500
GR	94 - 165	X	X
ISF/BHC/GR	165 - 477	X	X
ISF/BHC/MSFL	465 - 1692	X	X
ISF/BHC/MSFL	1684 - 3352	X	X
ISF/BHC	3338 - 3702	X	X
FDC/CNL	3338 - 3703	X	X
DLL/MSFL	3338 - 3703	X	X
CDM	3338 - 3703	X	X
RFT	3417 - 3611	X	
RFT	3417 - 3611	X	
CBL	3125 - 3632	X	X
WIRELINE DATA - PRESSURE LOG:	94 - 3700	1:5000	
TEMPERATURE DATA - LOG:	94 - 3700	1:5000	
DRILLING DATA - PRESSURE LOG:	94 - 3700	1:5000	
PRESSURE - EVALUATION LOG:	94 - 3700	1:5000	
VELOCITY (L.T.S.)	94 - 3702	1:1000	X

(+Synthetic Seismogram Marine, 10cm/s, 1stk)
 (+Synthetic Seismogram, 10cm/s, b/p-w/t, 2stk)
 (+Air Gun Well Velocity Survey & C.L.D. 1stk)
 (+Two Way Travel Time, 5-10cm/s, 2stk)

MUD PROPERTIES				
DEPTH BELOW KB m	WEIGHT g/cm3	FUNNEL VISC. sec	FILTRATE LOSS cm3	REMARKS
390	1.14	85		
1450	1.40	85		
1680	1.30	58		
1830	1.44	45		
1990	1.42	48		
2100	1.44	44		
2630	1.50	59		
3300	1.54	54		
3390	1.50	51		

DRILL BIT CUTTINGS AND WET SAMPLES		
SAMPLE TYPE	INTERVAL BELOW KB	NUMBER OF SAMPLES
CUTTINGS	180 - 3700	450
WET SAMPLES	180 - 3632	600

SHALLOW GAS	
DEPTH INTERVAL m KB	REMARKS
410	CLASSIC LOG RESPONSE



GEOLOGICAL TOPS

WELL : 7/12-6

Depth m (RKB)

Nordland Group	
Utsira Fm	
Hordaland Group	1675
Frigg Fm	
Rogaland Group	2540
Balder Fm	2540
Sele Fm	2566
Lista Fm	2605
Montrose Group	2617
Maureen Fm	2617
Chalk Group	2661
Ekofisk Fm	2661
Tor Fm	2730
Hod Fm	3002
Plenus Marl Fm	3071
Hidra Fm	3085
Cromer Knoll Group	3092
Rødby Fm	
Valhall Fm	3095
Tyne Group	3292
Mandal Fm	3292
Farsund Fm	3332
Vestland Group	3406
Ula Fm	3406
Bryne Fm	3502
Gassum Fm	3530?
Skagerak Fm	3544
	TD = 3700