

Well no : 7/ 8-03 Operator : CONOCO

Coordinates : 57 15 30.58 N UTM coord. : 6346394 N  
 02 32 45.78 E 472613 E

Licence no : 069 Permit no : 387

Rig : BORGNY DOLPHIN Rig type : SEMI-SUB.

Contractor : DOLPHIN SERVICES A/S

Bottom hole temperature : 149 deg.C Elev. KB : 25 M

Spud. date : 83.09.12 Water depth : 81 M

Compl. date : 83.12.12 Total depth : 4320 M

Spud. class : WILDCAT Form. at TD : PERMIAN

Compl. class : P&A. OIL/GAS DISC. Prod. form :

Seisloca : NH CN 82 - 119 SP 667

## LICENSEES

-----

5,000 BP PETROLEUM DEVELOPMENT OF NORWAY A/S  
 25,000 CONOCO NORWAY INC.  
 5,000 DEMINEX (NORGE) A/S  
 15,000 NORSK HYDRO PRODUKSJON A.S  
 50,000 DEN NORSKE STATS OLJESELSKAP A.S

## CASING AND LEAK-OFF TESTS

Type	Casing diam.	Depth below KB	Hole diam.	Hole depth below KB	Lot mud eqv. g/cm3
CONDUCTOR	30	199,0	36	199,0	
SURF.COND.	20	610,0	26	622,0	1,88
INTERM.	13 3/8	1981,0	17 1/2	1995,0	1,65
INTERM.	9 5/8	3554,0	12 1/4	3561,0	2,03
LINER	7	3827,0	8 1/2	4320,0	

## CONVENTIONAL CORES

Core no.	Intervals cored meters	Recovery M %	Series
1	3734.0 - 3742.8	8.5 96.6	UPPER JURASSIC
2	3742.8 - 3744.9	1.7 81.0	UPPER JURASSIC
3	3744.9 - 3763.1	18.2 100.0	UPPER JURASSIC
4	3763.1 - 3775.6	8.1 64.8	UPPER JURASSIC

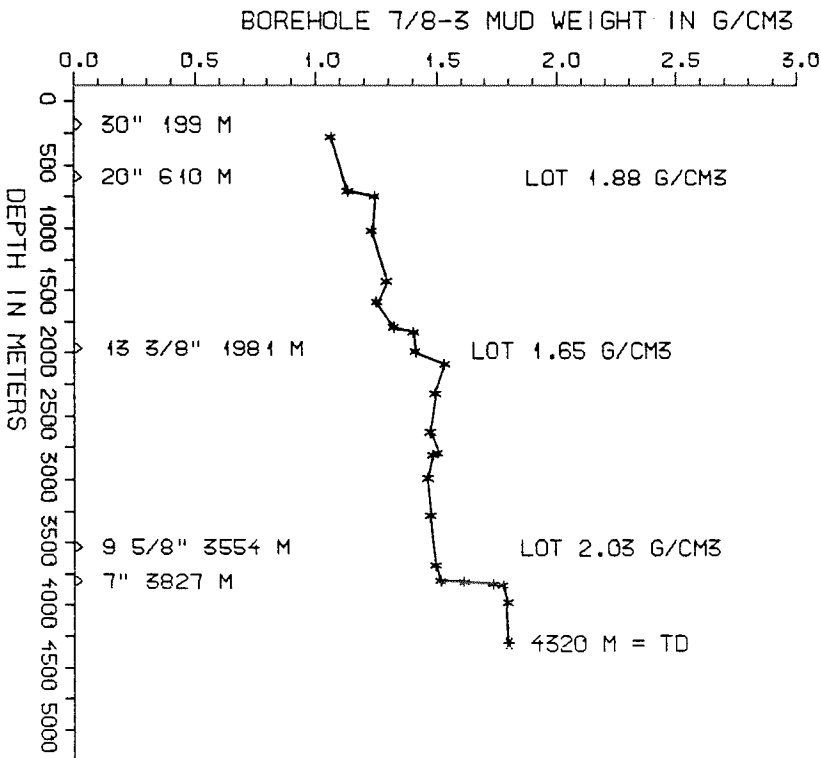
DRILL STEM TEST									
TEST NO	DEPTH BELOW KB	CHOKE SIZE mm	RECOVERY					PRESS. (psi)	
			OIL Sm <sup>3</sup> /d	GAS M Sm <sup>3</sup> /d	OIL GRAV. g/cm <sup>3</sup>	GAS GRAV. rel. air	GOR m <sup>3</sup> /m <sup>3</sup>	FSIP	WHP
1	3762 - 3767	50	206.7	6512.9	0.882	0.880	31.52		57
2	3734 - 3741	50	65.9		0.882				20

AVAILABLE LOGS			
LOG TYPE	INTERVALS	1/200	1/500
ISF LSS MSFL GR	199 - 610	X	X
ISF LSS MSFL	610 - 1993	X	X
ISF LSS MSFL	1984 - 3565	X	X
ISF LSS MSFL	3559 - 4261	X	X
LDL CNL	610 - 1994	X	X
LDL CNL	1984 - 3566	X	X
LDL CNL NGL	3559 - 4262	X	X
DLL	3559 - 4258	X	X
SHDT (CDM)	1984 - 3566	X	
SHDT (CDM)	3559 - 4262	X	
SHDT (AP)	1915 - 2300	X	
SHDT (AP)	2248 - 2600	X	
SHDT (AP)	2500 - 3600	X	
SHDT (AP)	3650 - 4250	X	
SHDT HOLE GEOM.	1984 - 3566	X	
SHDT HOLE GEOM.	3559 - 4262	X	
TEMP. LOG 13 3/8"	109 - 980		X
NGL PLAYBACK	3559 - 4262	X	
CBL VDL	3350 - 3801	X	
RFT	3725 - 4170	X	
MUD	200 - 4320		X
VELOCITY (S.C.L.)	199 - 4261		X
(Synthetic Seismogram, geogram, 5-10 cm/s		2 stk)	
(Seismic log, plot 1-15		15 stk)	
(V.S.P., plot 1-16		16 stk)	

MUD PROPERTIES			
DEPTH BELOW KB m	WEIGHT g/cm <sup>3</sup>	FUNNEL VISC. sec	FILTRATE LOSS cm <sup>3</sup>
205	1.03	100	
630	1.10	100	
670	1.21	100	
940	1.20	100	
1350	1.26	46	
1510	1.22	46	
1710	1.29	52	
1760	1.37	52	
1910	1.38	44	
2005	1.50	60	
2245	1.46	65	
2550	1.44	65	
2710	1.47	67	
2730	1.45	67	
2910	1.43	58	
3210	1.44	58	
3605	1.46	50	
3720	1.48	50	
3730	1.58	54	
3750	1.70	54	
3760	1.74	58	
3900	1.76	54	
4320	1.77	60	

DRILL BIT CUTTINGS AND WET SAMPLES		
SAMPLE TYPE	INTERVAL BELOW KB	NUMBER OF SAMPLES
CUTTINGS	210 - 4321	480
WET SAMPLES	210 - 4321	1200

SHALLOW GAS	
DEPTH INTERVAL m KB	REMARKS
	NONE



## WELL HISTORY - 7/8-3

### GENERAL:

The primary objective of the wildcat 7/8-3 was to explore the hydrocarbon potential of the Upper Jurassic sandstones. Secondary objectives were to explore the Cretaceous Chalk and the Triassic sandstones. The well encountered hydrocarbon bearing sandstones in the Upper Jurassic Ula Formation.

### OPERATIONS:

The well was spudded 12.09.83 by the semi-submersible rig Borgny Dolphin. Four cores were cut, three in the Upper Jurassic Ula Formation and one into Upper Triassic sandstones. There were no major problems during drilling. While running 13 3/8" casing this got stuck and had to be pulled out of the hole. The hole was cleaned and new casing was set without further complications. The well was drilled using waterbased mud.

### TESTING:

Two DST's were performed in the Ula Formation sandstones. The first produced oil and gas. The second produced oil and gas but the gas flow was not recorded.

**GEOLOGICAL TOPS**  
**WELL 7/8-3**

	Depth m (RKB)
Nordland Group	81,0
Hordaland Group	1309,0
Rogaland Group	2691,5
Balder Fm	2691,5
Sele Fm	2728,0
Lista Fm	2753,0
Maureen Fm Eqv	2806,0
Chalk Group	2832,5
Ekofisk Fm	2832,5
Tor Fm	2998,5
Hod Fm	3250,0
Plenus Marl Fm	3336,0
Hidra Fm	3342,0
Cromer Knoll Group	3368,0
Rødby Fm	3368,0
Valhall Fm	3436,0
Tyne Group	3613,5
Mandal Fm	3613,5
Farsund Fm	3650,0
Vestland Group	3698,0
Ula Fm	3698,0
Triassic	3742,0
Smith Bank Fm	3742,0
Zechstein Group	4212,0
TD =	4320,0