

Well no : 6407/ 1-03

Operator : STATOIL

Coordinates	: 64 52 25.48 N 07 02 53.47 E	UTM coord.	: 7195989 N
		UTM zone 32	: 407531 E
Licence no	: 073	Permit no	: 388
Rig	: DYVI DELTA	Rig type	: SEMI-SUB.
Contractor	: DYVI OFFSHORE A/S		
Bottom hole temperature	: 140 deg.C	Elev. KB	: 29 M
Spud date	: 83.09.17	Water depth	: 286 M
Compl. date	: 84.01.16	Total depth	: 4469 M
Spud class.	: WILDCAT	Age at TD	: TRIASSIC
Compl. class.	: P&A. OIL/GAS DISC.		
Seis. loc.	: ST 8110 - 435 SP 140		

## LICENSEES

20.000	AMOCO NORWAY OIL COMPANY
20.000	CONOCO NORWAY INC.
10.000	NORSK HYDRO PRODUKSJON A.S
50.000	DEN NORSKE STATS OLJESELSKAP A.S

## CASING AND LEAK-OFF TESTS

Type	Casing diam.	Depth below KB	Hole diam.	Hole depth below KB	Lot mud eqv. g/cm <sup>3</sup>
CONDUCTOR	30	415.0	36	415.0	
SURF.COND.	20	948.0	26	965.0	1.70
INTERM.	13 3/8	2286.0	17 1/2	2300.0	1.87
INTERM.	9 5/8	3595.0	12 1/4	3608.0	1.82
LINER	7	3969.0	8 1/2	3976.0	
OPEN HOLE			6	4469.0	

## CONVENTIONAL CORES

Core no.	Intervals cored meters	Recovery		Series
		M	%	
1	3619.0 - 3621.0	0.7	35.0	MIDDLE JURASSIC
2	3621.0 - 3639.0	17.1	95.0	MIDDLE JURASSIC
3	3639.0 - 3657.0	18.0	100.0	MIDDLE JURASSIC
4	3657.0 - 3684.0	27.0	100.0	MIDDLE JURASSIC
5	3684.0 - 3711.0	26.4	97.8	MIDDLE JURASSIC
6	3711.0 - 3717.0	5.2	86.7	MIDDLE JURASSIC
7	3748.0 - 3758.0	10.0	100.0	MIDDLE JURASSIC

## MUD PROPERTIES

Depth below KB meter	Mud weight g/cm <sup>3</sup>	Funnel viscosity s/qt	Mud type
450.0	1.08	66.0	WATER BASED
575.0	1.09	50.0	WATER BASED
670.0	1.10	60.0	WATER BASED
920.0	1.11	47.0	WATER BASED
1040.0	1.08	44.0	WATER BASED
1210.0	1.12	45.0	WATER BASED
1380.0	1.15	47.0	WATER BASED
1480.0	1.16	47.0	WATER BASED
1610.0	1.15	44.0	WATER BASED
1800.0	1.27	44.0	WATER BASED
1890.0	1.40	55.0	WATER BASED
2205.0	1.55	58.0	WATER BASED
2310.0	1.66		WATER BASED
2600.0	1.70	48.0	WATER BASED
3720.0	1.20	55.0	WATER BASED
4320.0	1.30	73.0	WATER BASED
4450.0	1.29	77.0	WATER BASED

## DRILL STEM TEST

---

### INTERVALS AND PRESSURES

Test no.	Interval meter	Choke size	Pressure (PSI)		
			FSIP	BTHP	FFP
1.0	3702.5 - 3697.5	19.1		5433.0	
2.0	3670.0 - 3665.0	25.4		5382.0	

### RECOVERY

Test no.	Oil Sm <sup>3</sup> /d	Gas M Sm <sup>3</sup> /d	Oil grav. g/cm <sup>3</sup>	Gas grav. rel. air	GOR m <sup>3</sup> /m <sup>3</sup>
1.0	867	147	0.872	0.665	148
2.0	192*	725	0.776	0.655	3782

\* - CONDENSATE

## DRILL BIT CUTTINGS AND WET SAMPLES

SAMPLE TYPE	INTERVAL BELOW KB	NUMBER OF SAMPLES
CUTTINGS	415 - 4469	1440
WET SAMPLES	420 - 4467.5	1050

## SHALLOW GAS

INTERVAL BELOW KB	REMARKS
598 M	POSSIBLE SHALLOW GAS
729-743 M	POSSIBLE SHALLOW GAS

## AVAILABLE LOGS

LOG TYPE	INTERVAL	1/200	1/500
ISF LSS MSFL GR	315 - 964	X	1:1000
ISF LSS MSFL	947 - 2297	X	1:1000
ISF LSS MSFL	2288 - 3606	X	1:1000
ISF BHC	3595 - 3976	X	1:1000
ISF BHC MSFL	3964 - 4467	X	1:1000
ISF LSS MSFL GR PLAYBACK	315 - 4467		X
LDL	947 - 2297	X	
LDL CNL NGL	2288 - 3601	X	
LDL CNL	3596 - 3975	X	
LDL CNL	3964 - 4456	X	
LDL CNL PLAYBACK	947 - 4456		X
DLL MSFL	3396 - 3970	X	X
SHDT	2288 - 3607	X	
SHDT	3595 - 3976	X	
SHDT	3964 - 4469	X	
SHDT AP	2250 - 3610	X	X
SHDT AP	3600 - 4000	X	X
SHDT AP	3950 - 4500	X	X
CDM FP	3455 - 3530	1:100	
CDM FP	3597 - 3716	1:50	
CDM FP	3700 - 3750	1:50	
CDM FP	3730 - 3830	1:50	
NGL RATIOS	3300 - 3600	X	X
NGS	3595 - 3976	X	X
NGS	3964 - 4456	X	X
RFT	3465 - 3466	X	
RFT	3610 - 3950	X	
RFT (1 DEPTH LINE = 6 SEC.)	3993 - 4024	X	
TEMPERATURE/HRT	3964 - 4456	1:1000	
DLWD	2399 - 3975		X
CBL VDL	1980 - 2280	X	
CBL VDL	3082 - 3595	X	
CBL VDL	3385 - 3962	X	
CST GR CORRELATION	2333 - 3598	X	
CST GR	3982 - 4125	X	
MUD (FORMATION EVALUATION)	415 - 4469		X
VELOCITY (S.C.L.)	314 - 4467		X

(Cont.)

## AVAILABLE LOGS (Cont.)

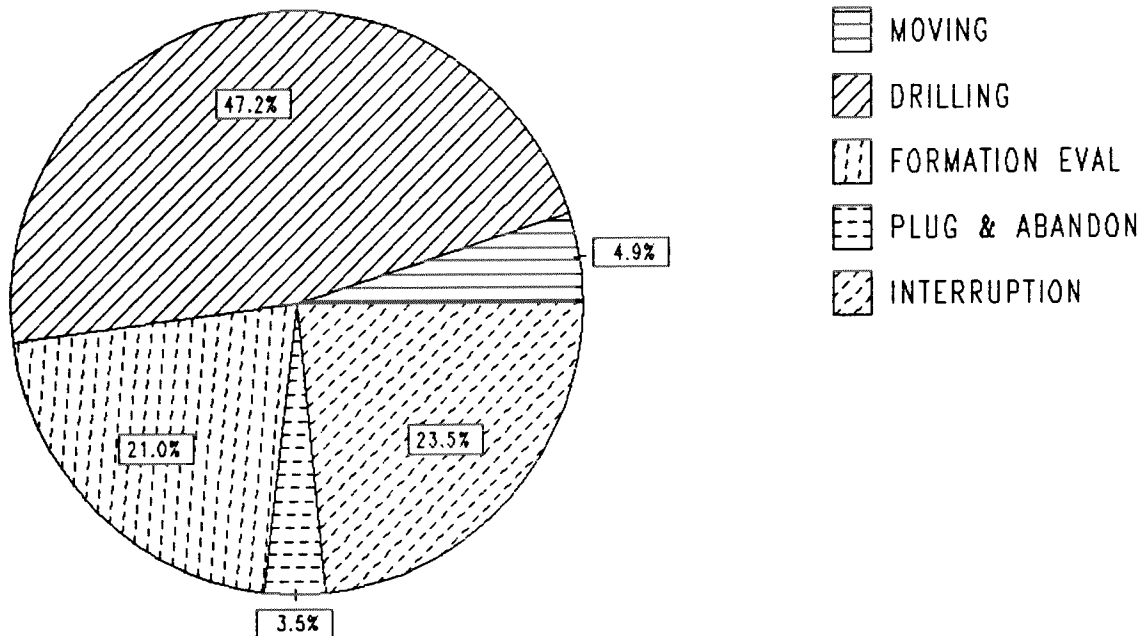
LOG TYPE	INTERVAL	1/200	1/500
----------	----------	-------	-------

---

(+ Geogram Synthetic Seismogram, 10 cm/s, min/zero phase, nor/rev. polarity,			7 stk)
(+ Seismic logs, plot 1-5, raw/stacked data,			5 stk)
(+ VSP, plot 6-20, stacked data, nor/rev. pol.,			15 stk)
(+ VSP, run 1, 595-4050m,			1 stk)

# DAILY DRILLING REPORT SYSTEM

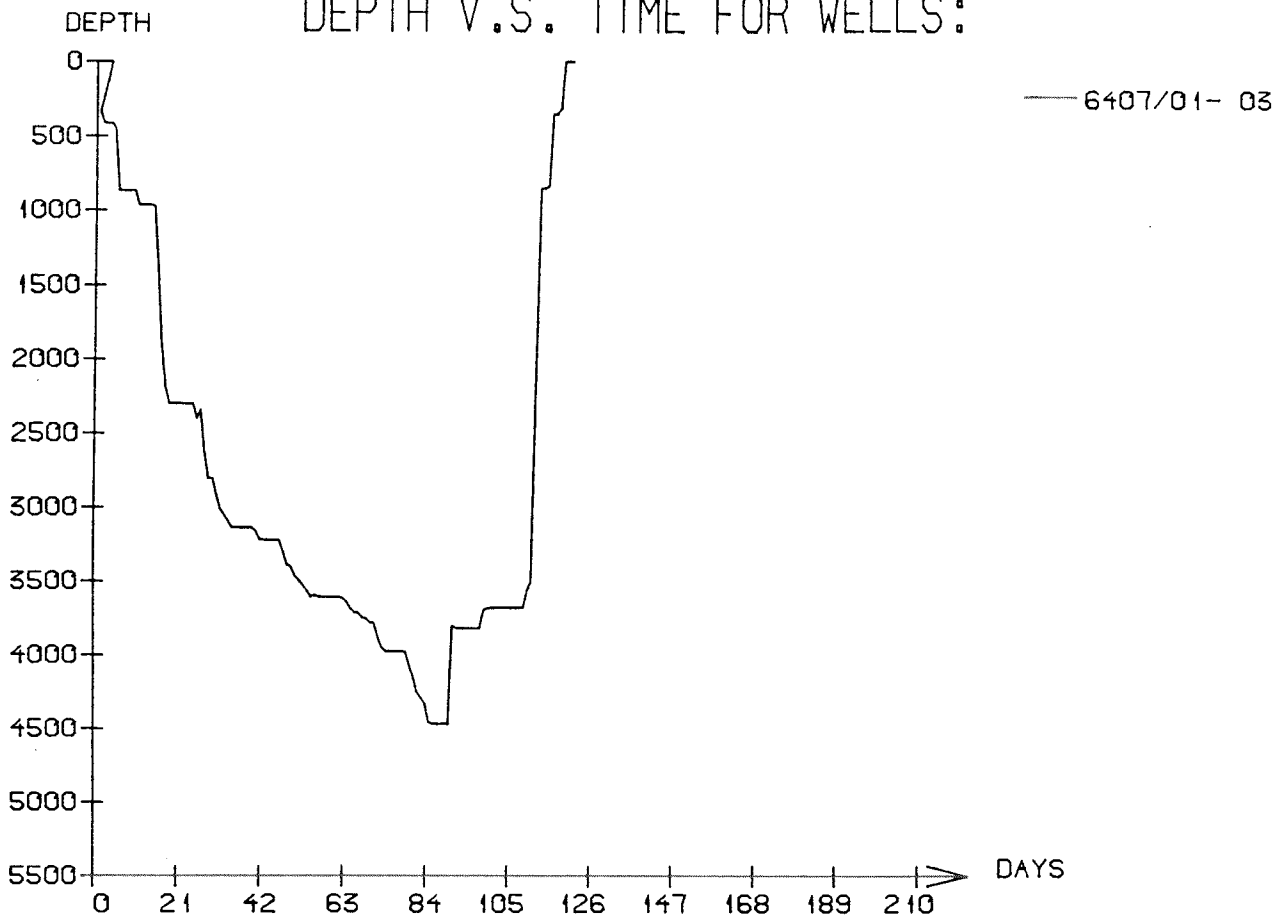
Main operation : 6407/01-03



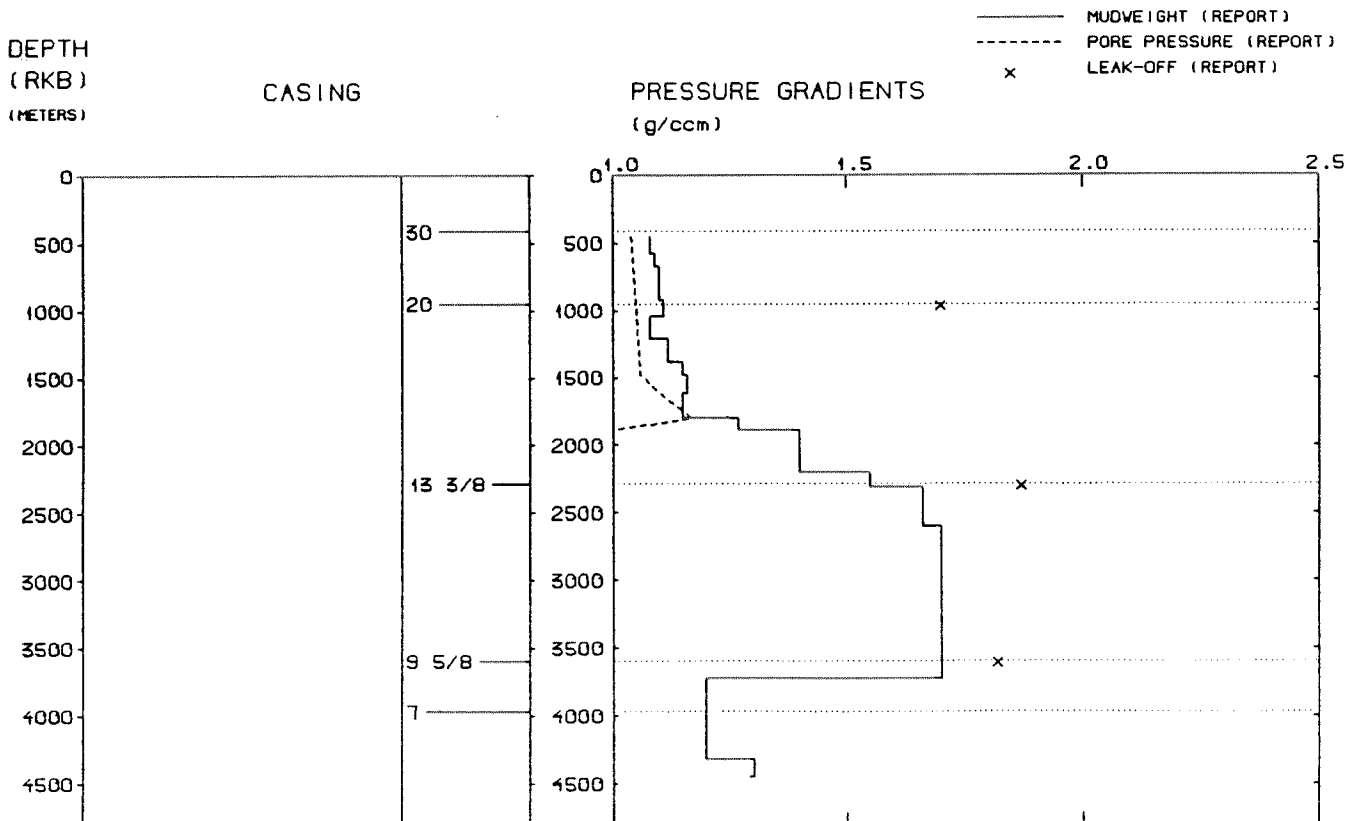
Total : 3041,50 HRS

Main operation	Hours	% of total
MOVING	150,50	4,95
DRILLING	1434,50	47,16
FORMATION EVAL	638,50	20,99
PLUG & ABANDON	105,00	3,45
INTERRUPTION	713,00	23,44

### DEPTH V.S. TIME FOR WELLS:



### WELL: 640701 03 PRESSURE COMPOSITE PLOT



## WELL HISTORY - 6407/1-3

### GENERAL:

The primary target of the wildcat 6407/1-3 was Middle Jurassic sandstones. Secondary target was the Lower Jurassic sandstones. Other zones of interest were the upper and lower part of the Cretaceous and the coal unit in Lower Jurassic. Hydrocarbons were encountered in the Middle Jurassic sandstones. Hydrocarbon shows were recorded from Upper Cretaceous, Lower Cretaceous and the Lower Jurassic coal unit. The Lower Jurassic sandstone showed only traces of hydrocarbons.

### OPERATIONS:

The well was spudded 17.09.83 by the semi-submersible rig Dyvi Delta. Seven cores were cut in the Middle Jurassic sandstones. Some technical problems occurred on the rig before drilling of the 26" hole section. A cement squeeze of the 20" casing shoe was performed due to a unsuccessful leak off test. The circulation was lost when circulating prior to cementing the 13 3/8" casing. There were no returns during the cement job. A cement squeeze of the 13 3/8" casing shoe was performed due to a low leak off test. Hole problems occurred when running back in the hole after a period of bad weather. The hole had collapsed and had to be reamed back to bottom at 3136 m. A drilling break occurred at 3746 to 3748 m. The well was drilled using water based mud.

### TESTING:

Two DST's were performed in the Middle Jurassic sequence, one in the oil zone and one in the gas zone.



# GEOLOGICAL TOPS

WELL: 6407/ 1-03

	<i>Depth m (RKB)</i>
<i>Nordland Group</i>	315.000
<i>Kai Fm</i>	1449.000
<i>Hordaland Group</i>	1762.500
<i>Brygge Fm</i>	1762.500
<i>Rogaland Group</i>	2212.500
<i>Tare Fm</i>	2212.500
<i>Tang Fm</i>	2281.000
<i>Shetland Group</i>	2346.000
<i>Springar Fm</i>	2346.000
<i>Nise Fm</i>	2448.000
<i>Kvitnos Fm</i>	2600.000
<i>Cromer Knoll Group</i>	3103.000
<i>Viking Group</i>	3521.000
<i>Spekk Fm</i>	3521.000
<i>Melke Fm</i>	3544.000
<i>Fangst Group</i>	3600.000
<i>Garn Fm</i>	3600.000
<i>Not Fm</i>	3704.000
<i>Ile Fm</i>	3741.000
<i>Båt Group</i>	3813.000
<i>Ror Fm</i>	3813.000
<i>Tilje Fm</i>	3950.000
<i>Åre Fm</i>	4150.000
<i>TD =</i>	4469.000