

Well no : 15/ 2-01 Operator : HYDRO

Coordinates : 58 45 19.75 N UTM coord. : 6513827 N
 01 35 40.54 E 418684 E

Licence no : 048 Permit no : 310

Rig : NORTRYM

Contractor : GOLAR-NOR OFFSHORE A/S

Bottom hole temperature : 132 deg.C Elev. KB : 25 M

Spud. date : 81.11.26 Water depth : 109 M

Compl. date : 82.02.24 Total depth : 4600 M

Spud. class : WILDCAT Form. at TD : PERMIAN

Compl. class : P&A. DRY HOLE Prod. form :

Seisloca : 753 228 SP 321

LICENSEES

 21,800 ELF AQUITAINE NORGE A/S
 17,300 NORSK HYDRO PRODUKSJON A.S
 50,000 DEN NORSKE STATS OLJESELSKAP A.S
 10,900 TOTAL MARINE NORSK A.S

CASING AND LEAK-OFF TESTS

Type	Casing diam.	Depth below KB	Hole diam.	Hole depth below KB	Lot mud eqv. g/cm
CONDUCTOR	30	196,0	36	196,0	
SURF.COND.	20	653,0	26	655,0	1,72
INTERM.	13 3/8	2737,0	17 1/2	2750,0	1,71
INTERM.	9 5/8	3770,0	12 1/4	3786,0	1,99
OPEN HOLE			8 3/8	4600,0	

CONVENTIONAL CORES

Core no.	Intervals cored meters	Recovery M %	Series
1	4365.0 - 4373.0	7.3 91.3	JURASSIC
2	4375.0 - 4390.0	15.0 100.0	JURASSIC
3	4390.0 - 4405.0	10.9 72.7	JURASSIC

DRILL STEM TEST									
TEST NO	DEPTH BELOW KB	CHOKE SIZE mm	RECOVERY					PRESS. (psi)	
			OIL Sm3 /d	GAS M Sm3 /d	OIL GRAV. g/cm3	GAS GRAV. rel. air	GOR m3/m3	FSIP	WHP
	NONE								

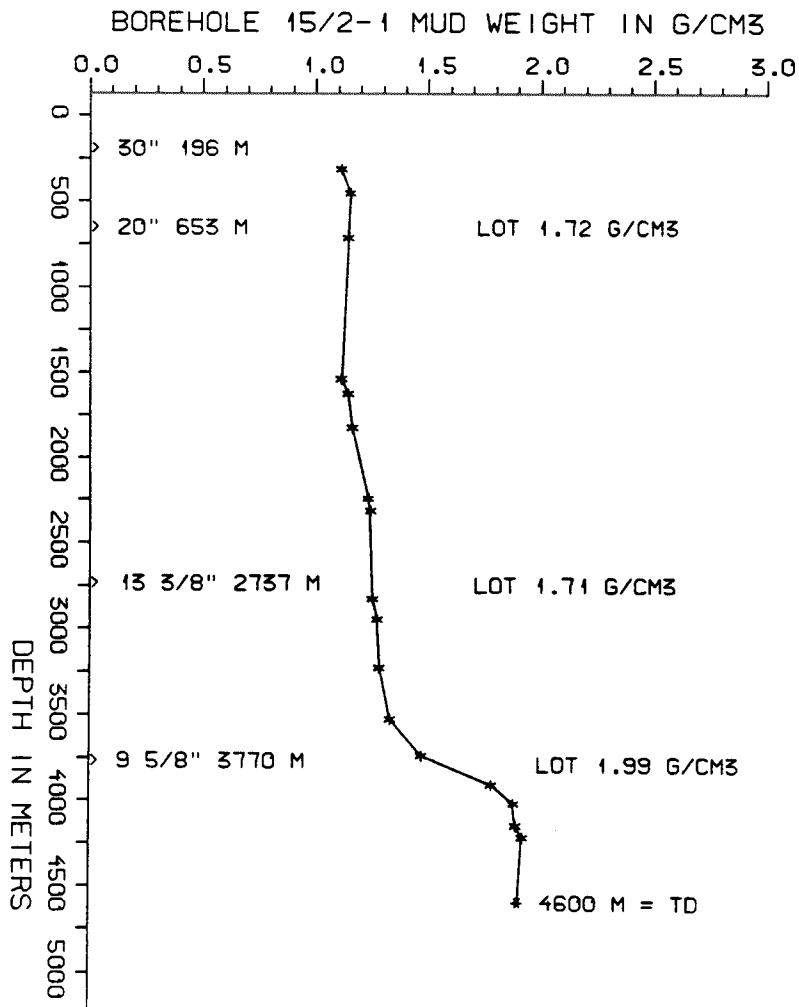
AVAILABLE LOGS				
LOG TYPE	INTERVALS	1/200	1/500	
ISF BHC GR	134 - 653	x		
ISF BHC	652 - 2749	x		
ISF BHC	2736 - 3786	x		
ISF BHC	3770 - 4451	x		
ISF BHC	4450 - 4599	x		
ISF SONIC GR	134 - 4599			x
FDC CNL	652 - 2750	x		
FDC CNL	2736 - 3785	x		
FDC CNL	3770 - 4451	x		
FDC CNL	4450 - 4600	x		
FDC CNL	652 - 4600			x
CDM	2736 - 3785	x		
CDM	3770 - 4565	x		
CDM AP	2737 - 3785	x		x
CDM AP	3771 - 4563	x		x
RFT	3770 - 4451	x		
RFT	3770 - 4451	x		
CBL VDL	400 - 2735	x		
CBL VDL	2246 - 3763	x		
MUD	196 - 4600			x
VELOCITY	134 - 4599	1:1000		x

(Air Gun Well Velocity Survey & C.L.D. 1stk)
(Synthetic Seismogram Marine, 10 cm/s, 1stk)
(Synthetic Seismogram, b/p-w/t, 10 cm/s, 2stk)
(Two Way Travel Time, 10 cm/s, 1stk)
(VSP, b/p-w/t, 10 cm/s, Proc: May-82 14stk)

MUD PROPERTIES			
DEPTH BELOW KB m	WEIGHT g/cm ³	FUNNEL VISC. sec	FILTRATE LOSS cm ³
250	1.08	36	
390	1.12	32	
650	1.11	32	
1470	1.08	46	
1560	1.11	65	
1760	1.13	65	
2180	1.20	65	
2250	1.21	65	
2760	1.22	65	
2840	1.23	65	
2880	1.24	65	
3160	1.25	65	
3460	1.30	65	
3670	1.44	65	
3840	1.75	67	
3950	1.85	61	
4080	1.86	56	
4150	1.89	59	
4580	1.88	138	

DRILL BIT CUTTINGS AND WET SAMPLES		
SAMPLE TYPE	INTERVAL BELOW KB	NUMBER OF SAMPLES
CUTTINGS	196 - 4600	1015
WET SAMPLES	200 - 4600	870

SHALLOW GAS	
DEPTH INTERVAL m KB	REMARKS
	NONE



WELL HISTORY - 15/2-1

GENERAL :

The main objectives of well 15/2-1 were sandstones of Jurassic and Triassic age. Hydrocarbons of commercial value were not proven.

OPERATIONS :

Well 15/2-1 was spudded 26.11.81 by the drilling rig "Nortrym". Operations went forth without incident. 3 cores, bleeding gas, were taken in the 8 3/8" section.

TESTING :

The well was not tested. An attempt was made to take RFT samples but the formation proved tight.

GEOLOGICAL TOPS

WELL: 15/2-1

	Depth m (RKB)
Nordland Group	134 m
Utsira Fm	705,5 m
Hordaland Group	826 m
Frigg Fm	1428 m
Rogaland Group	2068 m
Balder Fm	2068 m
Sele Fm	2148 m
Lista Fm	2178 m
Montrose Group	2235,5 m
Heimdal Fm	2235,5 m
Maureen FM	2494,0 m
Chalk Group	2640 m
Ekofisk Fm	2640 m
Tor Fm	2731 m
Flounder Fm	2920 m
Herring Fm	3438 m
Plenus Marl Fm	3506 m
Hidra Fm	3550,5 m
Cromer Knoll Group	3668 m
Rødby Fm	3668 m
Valhall Fm	3733 m
Viking Group	3878 m
Draupne Fm	3878 m
Heather Fm	4211 m
Vestland Group	4356 m
Hugin Fm	4356 m
Sleipner Fm	4485 m
Zechstein Group	4553 m

TD = 4600 m