

Well no : 7/11-08 Operator : HYDRO

Coordinates : 57 12 49.94 N UTM coord. : 6341433 N
 02 31 46.50 E 471586 E

Licence no : 070 Permit no : 389

Rig : TREASURE SCOUT Rig type : SEMI-SUB.

Contractor : WILHELMSSEN OFFSHORE SERVICES

Bottom hole temperature : 148 deg.C Elev. KB : 23 M

Spud. date : 83.09.22 Water depth : 79 M

Compl. date : 83.12.12 Total depth : 4750 M

Spud. class : WILDCAT Form. at TD : TRIASSIC

Compl. class : P&A. DRY HOLE Prod. form :

Seisloca : NH CN 82 - 124 SP 377

LICENSEES

7,500 CONOCO NORWAY INC.
 25,000 NORSK HYDRO PRODUKSJON A.S
 7,500 MOBIL DEVELOPMENT NORWAY A/S
 10,000 SAGA PETROLEUM A.S
 50,000 DEN NORSKE STATS OLJESELSKAP A.S

CASING AND LEAK-OFF TESTS

Type	Casing diam.	Depth below KB	Hole diam.	Hole depth below KB	Lot mud eqv. g/cm ³
CONDUCTOR	30	188,0	36	188,0	
SURF.COND.	20	605,0	26	620,0	1,86
INTERM.	13 3/8	1895,0	17 1/2	1910,0	1,89
INTERM.	9 5/8	3673,0	12 1/4	3698,0	2,03
OPEN HOLE			8 3/8	4750,0	

CONVENTIONAL CORES

Core no.	Intervals cored meters	Recovery M %	Series
1	3725.0 - 3743.9	18.9 100.0	UPPER TRIASSIC

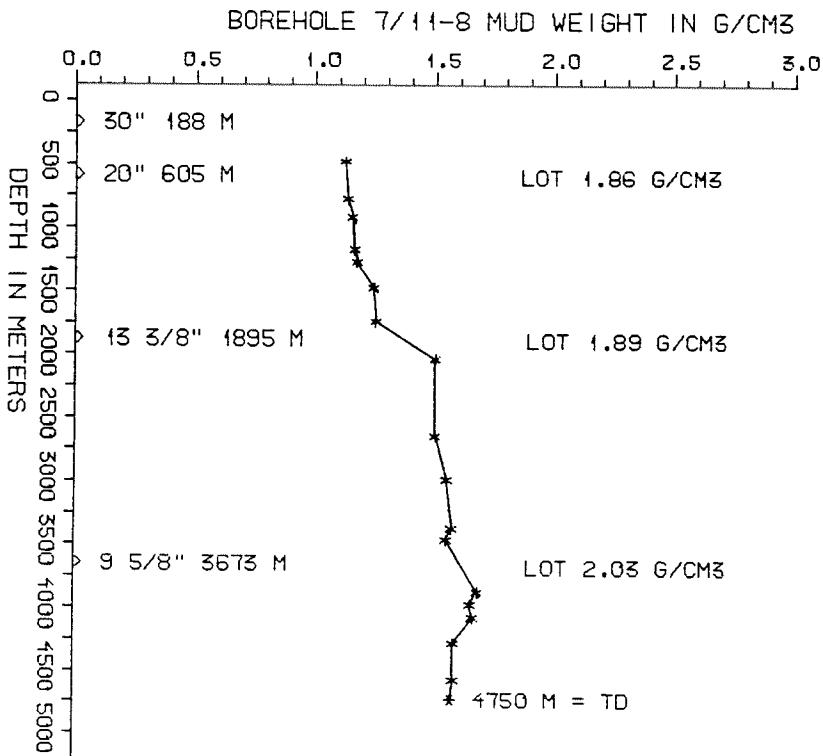
DRILL STEM TEST									
TEST NO	DEPTH BELOW KB	CHOKE SIZE mm	RECOVERY					PRESS. (psi)	
			OIL Sm ³ /d	GAS M Sm ³ /d	OIL GRAV. g/cm ³	GAS GRAV. rel. air	GOR m ³ /m ³	FSIP	WHP
	NONE								

AVAILABLE LOGS				
LOG TYPE	INTERVALS	1/200	1/500	
ISF LSS GR (GR:100-187)	187 - 617	X	X	
ISF LSS	604 - 1908	X	X	
ISF LSS	1896 - 3701	X	X	
ISF LSS	3677 - 4606	X	X	
ISF LSS	4506 - 4757	X	X	
LDL	604 - 1909	X		
LDL CNL	1896 - 3703	X		
LDL CNL NGL	3677 - 4607	X		
LDL CNL	4525 - 4758	X		
LDL CNL PLAYBACK	604 - 4758		X	
NGL RATIOS PLAYBACK	3677 - 4607	X		
CDM	1896 - 3669	X		
CDM	3677 - 4758	X		
CDM AP	1898 - 3668	X	X	
CDM AP	3677 - 4757	X	X	
RFT STRAIN GAUGE	3740 - 3920	X		
HP GAUGE GR	3740 - 3920	X		
CBL VDL GR CCL	537 - 1893	X		
CST GR	2895 - 3703	X		
CST GR	3682 - 4756	X		
DRILLING DATA PRESSURE	188 - 4750	1:5000		
TEMPERATURE DATA	188 - 4750	1:5000		
PRESSURE EVALUATION	188 - 4750	1:5000		
DXC NXB	188 - 4750	1:5000		
MUD	188 - 4750		X	
VELOCITY (L.T.S.)	192 - 4759		X	
(Geogram Synth. Seismogr., nor/rev polarity, zero phase, 192-4762m, 6 stk)				
(Seismic logs, plot 1-22, raw/stacked data, 22 stk)				
(VSP, plot 23-37, n/r polarity, stacked data, 15 stk)				
(Seismic Quicklook, run 1, 2900-4608m, 1 stk)				
(WST-VSP, run 1-2, 300-4608m, 1 stk)				
(WST-VSP, run 3, 1900-4759m, 1 stk)				

MUD PROPERTIES			
DEPTH BELOW KB m	WEIGHT g/cm ³	FUNNEL VISC. sec	FILTRATE LOSS cm ³
400	1.09	33	
700	1.10	43	
840	1.12	43	
1100	1.13	45	
1200	1.14	55	
1400	1.21	44	
1660	1.22	48	
1790	1.22	50	
1960	1.47	43	
2170	1.47	50	
2300	1.47	51	
2460	1.47	55	
2570	1.47	51	
2910	1.52	63	
3300	1.54	60	
3390	1.52	55	
3580	1.52	56	
3800	1.65	55	
3900	1.62	50	
4000	1.63	50	
4190	1.55	55	
4500	1.55	52	
4750	1.55	55	

DRILL BIT CUTTINGS AND WET SAMPLES		
SAMPLE TYPE	INTERVAL BELOW KB	NUMBER OF SAMPLES
CUTTINGS	190 - 4750	700
WET SAMPLES	190 - 4750	750

SHALLOW GAS	
DEPTH INTERVAL m KB	REMARKS
	NONE



WELL HISTORY - 7/11-8

GENERAL:

The primary objective of the wildcat 7/11-8 was to test Upper Jurassic sandstones of the Ula Formation. Secondary objective of the well was to test continental sandstone reservoirs of Triassic age as seen in some nearby wells. The well encountered water bearing Triassic sandstones directly underlying lower Cretaceous shales. The Ula Formation was found missing.

OPERATIONS:

The well was spudded 22.09.83 by the semi-submersible rig Treasure Scout. One core was cut in the Triassic sandstones. No shows were recorded.

Gumbo problems and problems with the seal assembly were experienced when running the 13 3/8" casing.

The well was drilled using waterbased mud.

TESTING:

The well was not tested.

GEOLOGICAL TOPS
WELL 7/11-8

	Depth m (RKB)
Nordland Group	102,0
Hordaland Group	1404,0
Rogaland Group	2899,0
Balder Fm	2899,0
Sele Fm	2932,0
Lista Fm	2976,5
Maureen Fm Eqv	3028,0
Chalk Group	3039,0
Ekofisk Fm	3039,0
Tor Fm	3168,0
Hod Fm	3504,0
Hidra Fm	3654,5
Cromer Knoll Group	3676,0
Rødby Fm	3676,0
Valhall Fm	3698,0
Triassic	3725,0
TD =	4750,0