

Well no : 15/ 8-01 Operator : STATOIL

Coordinates : 58 21 48.09 N UTM coord. : 6470197 N
01 34 22.31 E 416499 E

Licence no : 046 Permit no : 298

Rig : GLOMAR BISCAY II

Contractor : GLOBAL MARINE DRILLING COMPANY

Bottom hole temperature : 118 deg.C Elev. KB : 25 M

Spud. date : 81.07.18 Water depth : 112 M

Compl. date : 82.01.07 Total depth : 4300 M

Spud. class : WILDCAT Form. at TD : TRIASSIC

Compl. class : P&A. GAS/COND. DISC. Prod. form :

Seisloca : 609 159 SP 534

LICENSEES

 40,000 ESSO NORGE A.S
 10,000 NORSK HYDRO PRODUKSJON A.S
 50,000 DEN NORSKE STATS OLJESELSKAP A.S

CASING AND LEAK-OFF TESTS

Type	Casing diam.	Depth below KB	Hole diam.	Hole depth below KB	Lot mud eqv. g/cm
CONDUCTOR	30	187.0	36	187.0	
SURF.COND.	20	500.0	26	515.0	1,71
INTERM.	13 3/8	1185.0	17 1/2	1200.0	1,93
INTERM.	9 5/8	2874.0	12 1/4	2890.0	1,75
LINER	7	3990.0	8 1/2	3991.0	2,13
LINER	4 1/2	4296.0	6	4300.0	

CONVENTIONAL CORES

Core no.	Intervals cored meters	Recovery		Series
		M	%	
1	3658.0 - 3667.5	9.3	97.9	L.JURASSIC
2	3667.5 - 3678.5	10.8	98.2	L.JURASSIC
3	3678.5 - 3680.9	2.3	95.8	L.JURASSIC
4	3680.9 - 3700.0	19.0	99.5	L.JURASSIC
5	3699.0 - 3705.5	6.5	100.0	L.JURASSIC

DRILL STEM TEST									
TEST NO	DEPTH BELOW KB	CHOKE SIZE mm	RECOVERY					PRESS. (psi)	
			OIL Sm ³ /d	GAS M Sm ³ /d	OIL GRAV. g/cm ³	GAS GRAV. rel. air	GOR m ³ /m ³	FSIP	WHP
			1	4079 - 4085 4090 - 4093	19.1	316*	427		
2	3911 - 3926	16.7	399*	486	0.811	0.944	1218	6484	
3	3688 - 3697	22.2	408*	657	0.846	0.84	1610	6135	
4	3643 - 3653	22.2	290*	550	0.799	0.832	1897	4716	

* = CONDENSAT

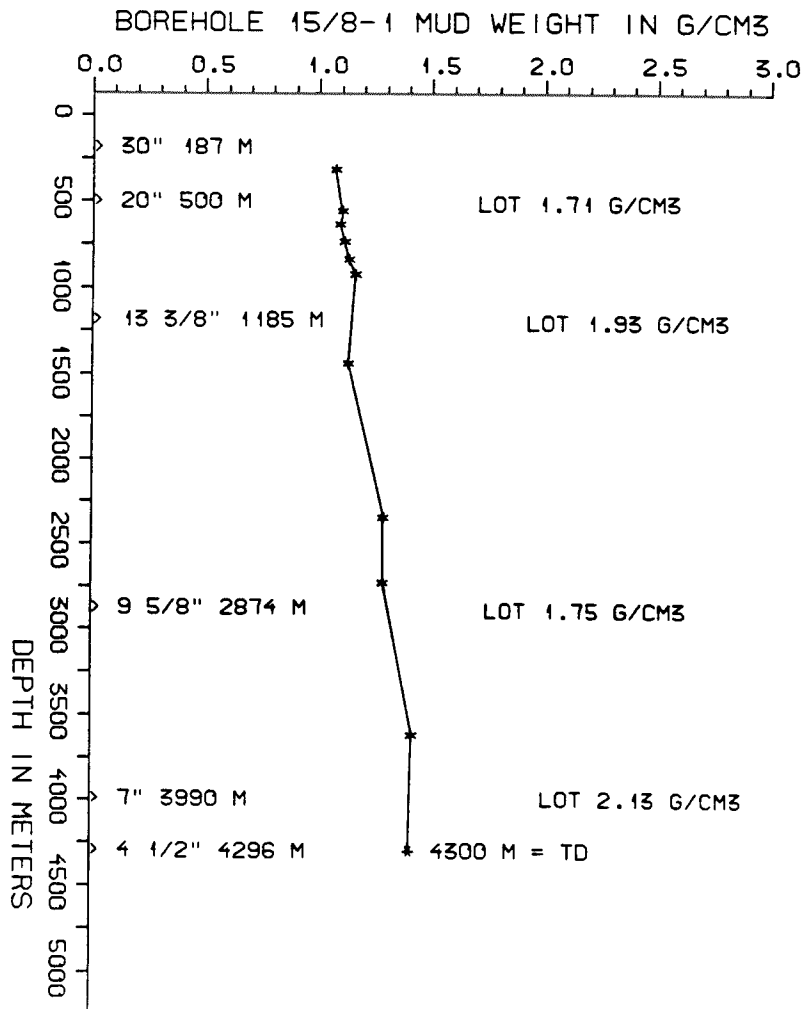
AVAILABLE LOGS			
LOG TYPE	INTERVALS	1/200	1/500
IEL BHC GR	160 - 513	x	x
IEL BHC	490 - 1198	x	x
IEL BHC	1125 - 2883	x	x
IEL BHC	2840 - 3703	x	x
IEL BHC	3585 - 3987	x	x
IEL BHC	3965 - 4301	x	x
CDL CNL	490 - 1199	x	x
CDL CNL	1170 - 2879	x	x
CDL CNL	2862 - 3987	x	x
CDL CNL	3212 - 3703	x	x
CDL CNL	3975 - 4302	x	x
DLL MLL	3585 - 3988	x	x
DLL MLL	3975 - 4302	x	x
CDM	2867 - 3987	x	
CDM	3980 - 4302	x	
CDM AP	2867 - 3987	x	x
CDM AP	3980 - 4302	x	x
FMT		x	
FMT		x	
CBL VDL	2700 - 4300	x	
MUD	137 - 4300		x
VELOCITY	160 - 4301	1:1000	x

(Air Gun Well Velocity Survey & C.L.D. 1stk)
(Synthetic Seismogram Marine, 10 cm/s, 1stk)
(Synthetic Seismogram b/p-w/t, 10 cm/s, 2stk)
(Two Way Travel Time, 10 cm/s, 1stk)

MUD PROPERTIES			
DEPTH BELOW KB m	WEIGHT g/cm ³	FUNNEL VISC. sec	FILTRATE LOSS cm ³
250	1.04	100	
490	1.07	45	
570	1.06	44	
670	1.08	48	
770	1.10	58	
860	1.13	51	
1370	1.10	48	
2280	1.26	50	
2660	1.26	49	
3550	1.39	52	

DRILL BIT CUTTINGS AND WET SAMPLES		
SAMPLE TYPE	INTERVAL BELOW KB	NUMBER OF SAMPLES
CUTTINGS	200 - 4300	665
WET SAMPLES	200 - 4298	849

SHALLOW GAS	
DEPTH INTERVAL m KB	REMARKS
	NONE



WELL HISTORY - 15/8-1

GENERAL :

Well 15/8-1 was drilled by "Glomar Biscay II" by Esso for Statoil. The well was designed to test possible hydrocarbon accumulation in the sandstones of Middle Jurassic age.

OPERATIONS :

Well 15/8-1 was spudded 18.07.81. Drilling operations were performed without any specific problems in the 36", 26" and 17 1/2" holes. Pipe stuck in the 12 1/4" hole at 2254 m and several times in the 8 1/2" hole. Miscellaneous technical problems occurred while drilling the 6" hole and a gas kick was at 4265 m while tripping. The well reached TD at 4300 m.

TESTING :

The well was tested in 4 intervals. Pertinent data from these tests can be found in the table on the previous page. Two sets of PVT samples were taken at the separator during all 4 tests. The procedure of the tests were similar; after initial flow and build up the well was flowed for approx. 660 min. producing gas/condensate. Test no. 4 was only flowed for 480 minutes. 3 samples were attempted taken during FMT runs. Due to technical malfunctions only 1 sample (from 3668 m) was obtained.

GEOLOGICAL TOPS

WELL: 15/8-1

	Depth m (RKB)
Nordland Group	137 m
Utsira Fm	879 m
Hordaland Group	1359 m
Frigg Fm	1926 m
Rogaland Group	2365 m
Balder Fm	2365 m
Sele Fm	2418 m
Lista Fm	2463 m
Montrose Group	2510 m
Heimdal Fm	2510 m
Rogaland Group	2675 m
Lista Fm	2675 m
Montrose Group	2727 m
Maureen Fm	2727 m
Chalk Group	2830 m
Ekofisk Fm	2830 m
Tor Fm	2841 m
Hod Fm	2998 m
Plenus Marl Fm	3237 m
Hidra Fm	3335 m
Cromer Knoll Group	3436 m
Rødby Fm	3436 m
Sola Fm	3445 m
Valhall Fm	3452 m
Viking Group	3535 m
Draupne Fm	3535 m
Heather Fm	3605 m
Vestland Group	3643 m
Hugin Fm	3643 m
Sleipner Fm	3945 m

TD = 4300 m