

WELL NO : 15/ 9-11

OPERATOR : STATOIL

COORDINATES : 58 24 02.53 N
1 53 41.79 E

UTM COORD. : 6474001.92 N
435410.72 E

LICENCE NO : 046

PERMIT NO : 0303

RIG : ROSS RIG

CONTRACTOR : ROSS DRILLING CO. A/S

BOTTOM HOLE TEMPERATURE : 80 DEG.C ELEV. KB : 25 M

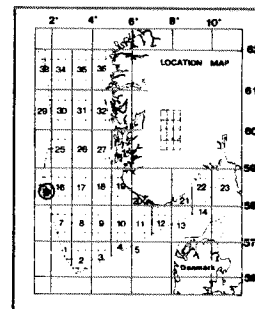
SPUD DATE : 81.09.18 WATER DEPTH : 88 M

COMPL. DATE : 81.12.23 TOTAL DEPTH : 2950 M

SPUD. CLASS. : APPRAISAL FORM. AT TD : TRIASSIC

COMPL. CLASS. : P&A. GAS/COND. DISC. PROD. FORM :

SEISLOCA : 510 - 325 SP 1369



LICENSEES :

30,400 % ESSO NORGE A/S LETING OG PRODUKSJON
7,600 % NORSK HYDRO A/S
62,000 % DEN NORSKE STATS OLJESELSKAP A/S

CONVENTIONAL CORES

Core no.	Intervals cored meters	Recovery M	Recovery %	Series
1	2364,0 - 2370,0	6,0	100,0	PALEOCENE
2	2370,0 - 2374,0	4,0	100,0	"
3	2395,0 - 2406,0	11,0	100,0	"
4	2406,0 - 2424,0	18,0	100,0	"
5	2424,0 - 2429,0	5,0	100,0	"
6	2430,0 - 2449,0	13,0	68,4	"
7	2449,0 - 2464,0	8,5	56,7	"
8	2464,0 - 2473,0	0,0	0,0	"
9	2473,0 - 2492,0	18,5	97,4	"
10	2492,0 - 2506,0	13,1	93,6	"
11	2506,0 - 2514,0	7,5	93,8	"

CASING AND LEAK-OFF TESTS

Type	Casing diam.	Depth below KB	Hole diam.	LOT depth below KB	LOT mud eqv. g/cm
CONDUCTOR	30	174,0	36	175,0	00,00
SURF.COND.	20	569,0	26	585,0	01,54
INTERM.	13 3/8	1159,0	17 1/2	1176,0	01,77
INTERM.	9 5/8	2575,0	12 1/4	2590,0	01,85
LINER	7	2950,0	8 1/2	2950,0	00,00

DRILL STEM TEST

TEST NO	FLOW NO	DEPTH BELOW KB	CHOKE SIZE mm	RECOVERY						PRESS. (psi)	
				OIL Sm3/day	GAS M Sm3/day	OIL GRAV. g/cm3	GAS GRAV. rel. air	GOR m3/m3	OTHER FLUIDS/REMARKS	FSIP	FFP
1		2797 - 2807	16.67	238 *	517.0	0.75	0.730	2172	* = CONDENSAT 108Sm3/DAY WATER	4343	4204
2		2432 - 2440	12.70	104 *	234.0	0.75	0.720	2248		3527	3502
3	1	2395 - 2415	19.10	266 *	569.8	0.75	0.734	2142		3521	3435
3	2		31.80	435 *	889.1			2044		3520	3395

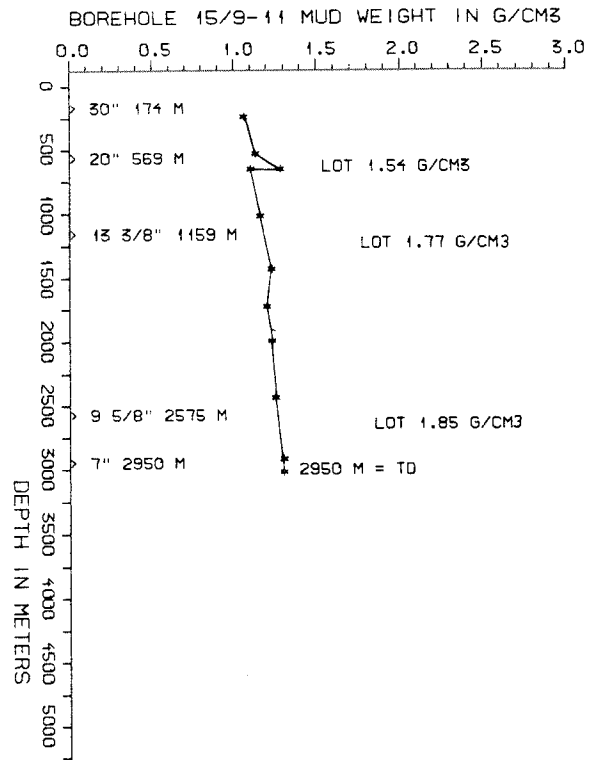
AVAILABLE LOGS			
LOG TYPE	INTERVALS	1/200	1/500
GR	75 - 174	X	X
ISF/SONIC/GR	174 - 464	X	X
ISF/SONIC	350 - 582	X	X
ISF/SONIC	569 - 1174	X	X
ISF/SONIC	1159 - 2442	X	X
ISF/BHC	2340 - 2580	X	X
ISF/SONIC	2575 - 2848	X	X
ISF/SONIC	2800 - 2946	X	X
FDC/CNL	569 - 1175	X	X
FDC/CNL	1159 - 2581	X	X
FDC/CNL	2575 - 2850	X	X
FDC/CNL	2785 - 2947	X	X
DLL/MSFL	2340 - 2540	X	X
DLL/MSFL	2775 - 2850	X	X
CDM	2100 - 2575	X	
CDM	2575 - 2850	X	
CDM/AP	2088 - 2573	X	X
CDM/AP	2576 - 2855	X	X
RFT (TEST 1-33)	2349 - 2517	1:100	
RFT (TEST 1-33, - 2 SAMPLES)	2790 - 2938	1:100	
CBL	450 - 1145		X
CBL/VDL	900 - 2574		X
CBL/VDL	2490 - 2910	X	X
MUD	174 - 2950		X
VELOCITY (L.T.S.)	174 - 2848	1:1000	X

(+Air Gun Well Velocity Survey & C.L.D. 1stk)
 (+Two Way Travel Time, 10cm/s 1stk)
 (+Synthetic Seismogram Marine, 10cm/s, 1stk)
 (+Synthetic Seismogram, b/p-w/t, 10cm/s, 2stk)

MUD PROPERTIES				
DEPTH BELOW KB m	WEIGHT g/cm3	FUNNEL VISC. sec	FILTRATE LOSS cm3	REMARKS
200	1.16	9		
470	1.10	9		
600	1.06	6		
960	1.13	10		
1180	1.12	12		
1405	1.20	10		
2340	1.22	19		
2600	1.23	19		

DRILL BIT CUTTINGS AND WET SAMPLES		
SAMPLE TYPE	INTERVAL BELOW KB	NUMBER OF SAMPLES
CUTTINGS	170 - 2949	380
WET SAMPLES	170 - 2995	406

SHALLOW GAS	
DEPTH INTERVAL m KB	REMARKS
	NONE



GEOLOGICAL TOPS

WELL: 15/9-11

	Depth m (RKB)
Nordland Group	825
Utsira Fm	
Hordaland Group	1099
Frigg Fm	
Rogaland Group	2184
Balder Fm	2184
Sele Fm	2230
Lista Fm	2304
Montrose Group	2387
Heimdal Fm	2387
Maureen Fm	2505
Chalk Group	2527
Ekofisk Fm	2527
Tor Fm	2530
Hod Fm	2624
Plenus Marl Fm	2674
Hidra Fm	2700
Cromer Knoll Group	2705
Rødby Fm	2705
Valhall Fm	2718
Viking Group	2752
Draupner Fm	2752
Heather Fm	2776
Vestland Group	2795
Hugin Fm	2795
Smith Bank Fm	2830
	T.D. = 2950