

Well no : 34/10-19 Operator : STATOIL

Coordinates : 61 11 10.86 N UTM coord. : 6783930 N
 02 15 30.55 E 460128 E

Licence no : 050 Permit no : 392

Rig : ROSS ISLE Rig type : SEMI-SUB.

Contractor : ROSS DRILLING CO. A/S

Bottom hole temperature : 70 deg.C Elev. KB : 22 M

Spud. date : 83.10.05 Water depth : 193 M

Compl. date : 83.12.06 Total depth : 2218 M

Spud. class : APPRAISAL Form. at TD : TRIASSIC

Compl. class : P&A. DRY HOLE Prod. form :

Seisloca : ST S3D - 206 SP 293

LICENSEES

9,000 NORSK HYDRO PRODUKSJON A.S
 6,000 SAGA PETROLEUM A.S
 85,000 DEN NORSKE STATS OLJESELSKAP A.S

CASING AND LEAK-OFF TESTS

Type	Casing diam.	Depth below KB	Hole diam.	Hole depth below KB	Lot mud eqv. g/cm ³
CONDUCTOR	30	288,0	36	289,5	
SURF.COND.	20	969,0	26	978,0	1,56
LINER	16	1073,0	19 3/4	1073,0	1,59
INTERM.	13 3/8	1483,0	17 1/2	1494,0	1,86
INTERM.	9 5/8	1689,0	12 1/4	1700,0	2,06
OPEN HOLE			8 1/2	2218,0	

CONVENTIONAL CORES

Core no.	Intervals cored meters	Recovery M	%	Series
1	1763.0 - 1781.3	17.5	95.6	CRETACEOUS/JURASSIC
2	1847.0 - 1856.0	8.7	96.7	LOWER JURASSIC
3	1856.5 - 1874.8	17.9	97.8	LOWER JURASSIC

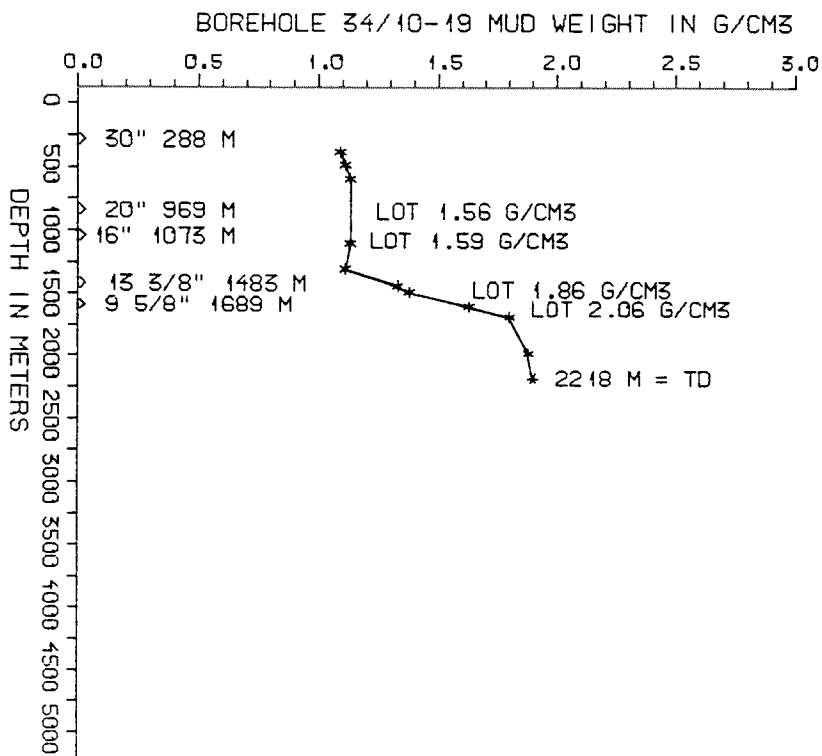
DRILL STEM TEST									
TEST NO	DEPTH BELOW KB	CHOKE SIZE mm	RECOVERY					PRESS. (psi)	
			OIL Sm ³ /d	GAS M Sm ³ /d	OIL GRAV. g/cm ³	GAS GRAV. rel. air	GOR m ³ /m ³	FSIP	WHP
	NONE								

AVAILABLE LOGS			
LOG TYPE	INTERVALS	1/200	1/500
ISF LSS MSFL GR	215 - 2216	X	X
MSFL CNL	1688 - 1874	X	X
LDL CNL GR	289 - 2217	X	X
CDM	1481 - 1700	X	
CDM AP	1481 - 1700	X	
CDM AP	1688 - 2216	X	
SHDT	1688 - 2216	X	X
TEMPERATURE LOG	255 - 953	X	X
RFT	1740 - 1845	1:100	
RFT	1846 - 1863	1:100	
RFT	1778 - 2185	1:100	
CBL VDL CCL	215 - 950	X	
CBL VDL CCL	1050 - 1480	X	
CBL VDL	1430 - 1690	X	
MUD	289 - 2218		X
VELOCITY	215 - 2216		X
(Synthetic Seismogram, 10 cm/s,		3 stk)	
(Airgun Well Vel. Survey and Calibr. log d.		1 stk)	
(Two way travel time, 10 cm/s,		1 stk)	
(V.S.P., 10 cm/s, proc.date: january 1984,		8 stk)	
(V.S.P., 10 cm/s, proc.date: march 1984;		4 stk)	

MUD PROPERTIES			
DEPTH BELOW KB m	WEIGHT g/cm ³	FUNNEL VISC. sec	FILTRATE LOSS cm ³
310	1.06	53	
410	1.08	44	
550	1.10	44	
750	1.08	39	
1050	1.10	42	
1370	1.30	46	
1440	1.35	46	
1540	1.60	48	
1640	1.77	49	
1940	1.85	58	

DRILL BIT CUTTINGS AND WET SAMPLES		
SAMPLE TYPE	INTERVAL BELOW KB	NUMBER OF SAMPLES
CUTTINGS	290-2218	405
WET SAMPLES	300-2218	400

SHALLOW GAS	
DEPTH INTERVAL m KB	REMARKS
332-335	



WELL HISTORY - 34/10-19

GENERAL:

The appraisal well 34/10-19 was drilled to investigate the southern section of the Gullfaks Phase II area. The primary objective was the Cook sandstone. The well was assumed to penetrate the Cook sandstone above the oil-water contact, and improve the understanding of the reserve distribution in this part of the Gullfaks field. Secondary objective was the Statfjord sandstone. The upper part of the Cook Formation was found missing due to faulting and erosion. The lower Jurassic sandstones were water saturated. The result of this well caused a reduction in the reserve estimate for the block.

OPERATIONS:

The well was spudded 05.10.83 by the semi-submersible rig Ross Isle. Three cores were cut, one from Cretaceous into Jurassic and two in the Jurassic Dunlin Group.

Shallow gas problems occurred. A 16" liner was required to stop gas flow between 20" and 30" casings. Several drilling breaks occurred in the 12 1/4" hole and lost circulation occurred in the 8 1/2" hole. Technical problems were also experienced. The well was drilled using waterbased mud.

TESTING:

No DST's were performed in this well.

GEOLOGICAL TOPS
WELL 34/10-19

	Depth m (RKB)
Nordland Group	214,5
Utsira Fm	852,0
Hordaland Group	905,0
Rogaland Group	1470,0
Balder Fm	1470,0
Lista Fm	1532,0
Shetland Group	1660,0
Cromer Knoll Group	1776,0
Dunlin Group	1779,0
Cook Fm	1779,0
Burton Fm	1830,0
Amundsen Fm	1839,0
Statfjord Fm	2005,0
Hegre Group	2188,0
TD=	2218,0