

Well no : 31/ 6-03 Operator : HYDRO

Coordinates : 60 30 04.77 N UTM coord. : 6707818 N  
 03 59 53.57 E 554834 E

Licence no : 085 Permit no : 394

Rig : NORTRYM Rig type : SEMI-SUB.

Contractor : GOLAR-NOR OFFSHORE A/S

Bottom hole temperature : 59 deg.C Elev. KB : 25 M

Spud. date : 83.11.01 Water depth : 301 M

Compl. date : 83.12.26 Total depth : 2250 M

Spud. class : WILDCAT Form. at TD : TRIASSIC

Compl. class : P&A. DRY HOLE Prod. form :

Seisloca : ST 8007 - 107 SP 1025

## LICENSEES

85,000 DEN NORSKE STATS OLJESELSKAP A.S  
 9,000 NORSK HYDRO PRODUKSJON A.S  
 6,000 SAGA PETROLEUM A.S

## CASING AND LEAK-OFF TESTS

Type	Casing diam.	Depth below KB	Hole diam.	Hole depth below KB	Lot mud eqv. g/cm <sup>3</sup>
CONDUCTOR	30	399,0	36	400,0	
SURF.COND.	20	600,0	26	618,0	1,39
INTERM.	13 3/8	1360,0	17 1/2	1365,0	1,82
OPEN HOLE			12 1/4	2250,0	

## CONVENTIONAL CORES

Core no.	Intervals cored meters	Recovery M %	Series
1	1495.0 - 1499.5	4.4 97.8	UPPER JURASSIC
2	1499.5 - 1509.0	9.5 100.0	UPPER JURASSIC
3	1509.0 - 1528.0	12.7 66.8	UPPER JURASSIC
4	1528.0 - 1533.5	0.6 10.9	UPPER JURASSIC
5	1533.5 - 1551.5	9.2 51.1	UPPER JURASSIC
6	1551.5 - 1565.5	13.9 99.3	UPPER JURASSIC
7	1565.5 - 1582.5	17.0 100.0	UPPER JURASSIC
8	1582.5 - 1601.5	18.8 98.9	UPPER JURASSIC
9	1601.5 - 1620.0	18.5 100.0	MIDDLE JURASSIC
10	1620.0 - 1638.5	18.5 100.0	MIDDLE JURASSIC
11	1638.5 - 1666.0	27.3 99.3	MIDDLE JURASSIC
12	1666.0 - 1694.1	28.1 100.0	MIDDLE JURASSIC

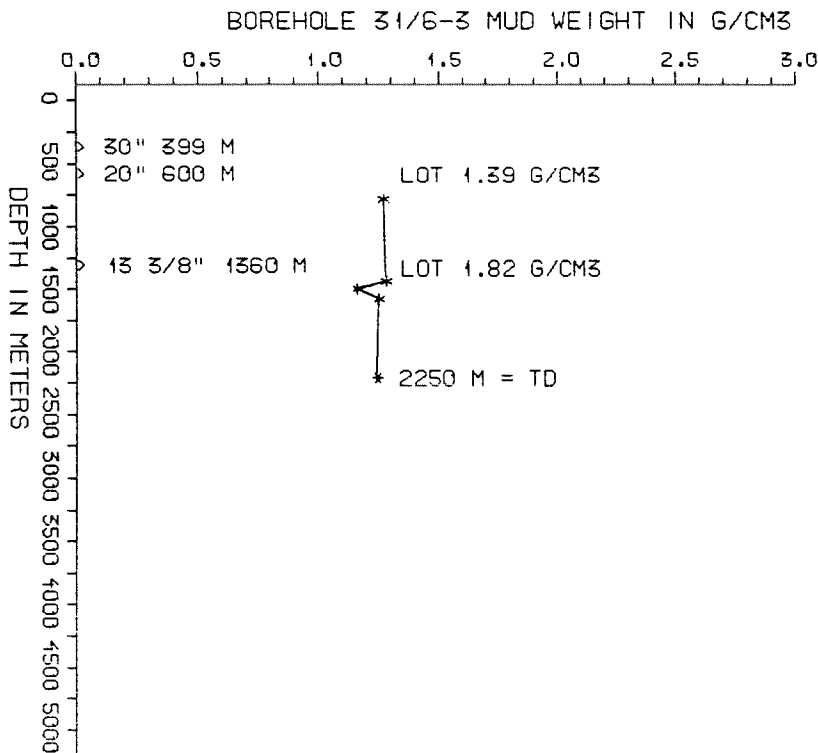
DRILL STEM TEST									
TEST NO	DEPTH BELOW KB	CHOKE SIZE mm	RECOVERY					PRESS. (psi)	
			OIL Sm <sup>3</sup> /d	GAS M Sm <sup>3</sup> /d	OIL GRAV. g/cm <sup>3</sup>	GAS GRAV. rel. air	GOR m <sup>3</sup> /m <sup>3</sup>	WHFP	BHFP
				NONE					

AVAILABLE LOGS				
LOG TYPE	INTERVALS	1/200	1/500	
DIFL BHC AC GR (GR:325-400	400 - 619	X		
DIFL BHC AC	600 - 1364	X		
DIFL BHC AC	1360 - 2250	X		
DIFL BHC AC GR	325 - 2250		X	
CDL CNL	399 - 616	X		
CDL CNL	600 - 1361	X		
CDL CNL	1350 - 2248	X		
CDL CNL	399 - 2248		X	
MLL	1360 - 2250	X	X	
CDM	600 - 1363	X		
CDM	1360 - 2243	X		
CDM AP	600 - 1363	X	X	
CDM AP	1360 - 2243	X	X	
STRATADIP	1360 - 2243	1:40		
FMT	1505 - 2146		X	
SPECTRALOG	1350 - 2245	X	X	
TEMPERATURE	503 - 1327		X	
MUD	399 - 2250		X	
VELOCITY (L.T.S.)	326 - 2250	1:1000	X	
(Air Gun Well Velocity Survey & C.L.D.			1 stk)	
(Two Way Travel Time, 10-20 cm/s,			2 stk)	

MUD PROPERTIES			
DEPTH BELOW KB m	WEIGHT g/cm <sup>3</sup>	FUNNEL VISC. sec	FILTRATE LOSS cm <sup>3</sup>
700	1.24	36	
1000	1.24	41	
1300	1.25	45	
1400	1.13	39	
1510	1.22	44	
1700	1.22	44	
2100	1.22	44	

DRILL BIT CUTTINGS AND WET SAMPLES		
SAMPLE TYPE	INTERVAL BELOW KB	NUMBER OF SAMPLES
CUTTINGS	720-2250	480
WET SAMPLES	410-2250	510

SHALLOW GAS	
DEPTH INTERVAL m KB	REMARKS
	MAX. 2,6% GAS AT ABOUT 414 M



## WELL HISTORY - 31/6-3

### GENERAL:

*The primary objective of the wildcat 31/6-3 was to assess possible hydrocarbon accumulations in the sands and sandstones of the Upper Jurassic Sognefjord Formation. The well encountered water bearing sandstones in the Upper/Middle Jurassic Sognefjord Formation as well as in the lower lying sandstones.*

### OPERATIONS:

*The well was spudded 01.11.83 by the semi-submersible rig Nortrym. 12 cores were cut in the Upper and Middle Jurassic sequence. Repositioning of the rig had to be done due to anchoring problems. No other major problems occurred during drilling. The well was drilled using waterbased mud.*

### TESTING:

*No drill stem tests were performed in the well.*

**GEOLOGICAL TOPS**  
**WELL 31/6-3**

	Depth m (RKB)
Nordland Group	326,0
Rogaland Group	508,0
Balder Fm	508,0
Sele Fm	550,0
Lista Fm	701,5
Montrose Group	808,0
Maureen Fm	808,0
Shetland Group	850,0
Cromer Knoll Group	1056,0
Viking Group	1370,0
Draupne Fm	1370,0
Upper Heather Fm	1495,0
Sognefjord Fm	1511,0
Middle Heather Fm	1646,5
Fensfjord Fm	1669,0
Brent Group	1931,5
Ness Fm	1931,5
Etive Fm	1970,5
Dunlin Group	1974,0
Drake Fm	1974,0
Johansen Fm	2041,5
Lower Amundsen Fm	2125,0
Statfjord Fm	2142,5
Hegre Group	2195,0
TD =	2250,0