

Well no : 15/ 9-18

Operator : STATOIL

Coordinates : 58 21 01.95 N UTM coord. : 6468508 N  
 01 48 12.27 E UTM zone 31 429961 E  
 Licence no : 046 Permit no : 396  
 Rig : DEEPSEA BERGEN Rig type : SEMI-SUB.  
 Contractor : ODFJELL DRILLING AND CONSULTING COMPANY A/S  
 Bottom hole temperature : 104 deg.C Elev. KB : 23 M  
 Spud date : 83.12.16 Water depth : 97 M  
 Compl. date : 84.03.02 Total depth : 3622 M  
 Spud class. : WILDCAT Age at TD : TRIASSIC  
 Compl. class. : P&A. DRY HOLE  
 Seis. loc. : ST 8215 - 122 SP 636

## LICENSEES

-----  
 40.000 ESSO NORGE A/S  
 10.000 NORSK HYDRO PRODUKSJON A.S  
 50.000 DEN NORSKE STATS OLJESELSKAP A.S

## CASING AND LEAK-OFF TESTS

Type	Casing diam.	Depth below KB	Hole diam.	Hole depth below KB	Lot mud eqv. g/cm <sup>3</sup>
CONDUCTOR	30	181.0	36	182.0	
SURF.COND.	20	499.0	26	520.0	1.47
INTERM.	13 3/8	1150.0	17 1/2	1170.0	1.52
INTERM.	9 5/8	2743.0	12 1/4	2762.0	1.74
OPEN HOLE			8 1/2	3622.0	

## CONVENTIONAL CORES

Core no.	Intervals cored meters	Recovery		Series
		M	%	
1	2630.0 - 2632.5	2.2	88.0	PALEOCENE
2	2632.5 - 2644.5	12.0	100.0	PALEOCENE
3	3230.0 - 3248.0	18.0	100.0	MIDDLE JURASSIC
4	3248.0 - 3267.0	19.0	100.0	MIDDLE JURASSIC

## MUD PROPERTIES

Depth below KB meter	Mud weighth g/cm3	Funnel viscosity s/qt	Mud type
180.0	1.04	100.0	WATER BASED
330.0	1.08	38.0	WATER BASED
610.0	1.10	45.0	WATER BASED
705.0	1.14	49.0	WATER BASED
815.0	1.13	52.0	WATER BASED
1145.0	1.12	52.0	WATER BASED
1175.0	1.13	44.0	WATER BASED
1780.0	1.17	53.0	WATER BASED
1890.0	1.20	53.0	WATER BASED
2090.0	1.23	46.0	WATER BASED
2800.0	1.24	46.0	WATER BASED
3040.0	1.35	53.0	WATER BASED
3095.0	1.39	55.0	WATER BASED
3145.0	1.42	54.0	WATER BASED

## DRILL STEM TEST

NO DST'S WERE PERFORMED IN THIS WELL

## DRILL BIT CUTTINGS AND WET SAMPLES

SAMPLE TYPE	INTERVAL BELOW KB	NUMBER OF SAMPLES
CUTTINGS	190 - 3622.5	690
WET SAMPLES	190 - 3622.5	1000

## SHALLOW GAS

INTERVAL BELOW KB	REMARKS
----------------------	---------

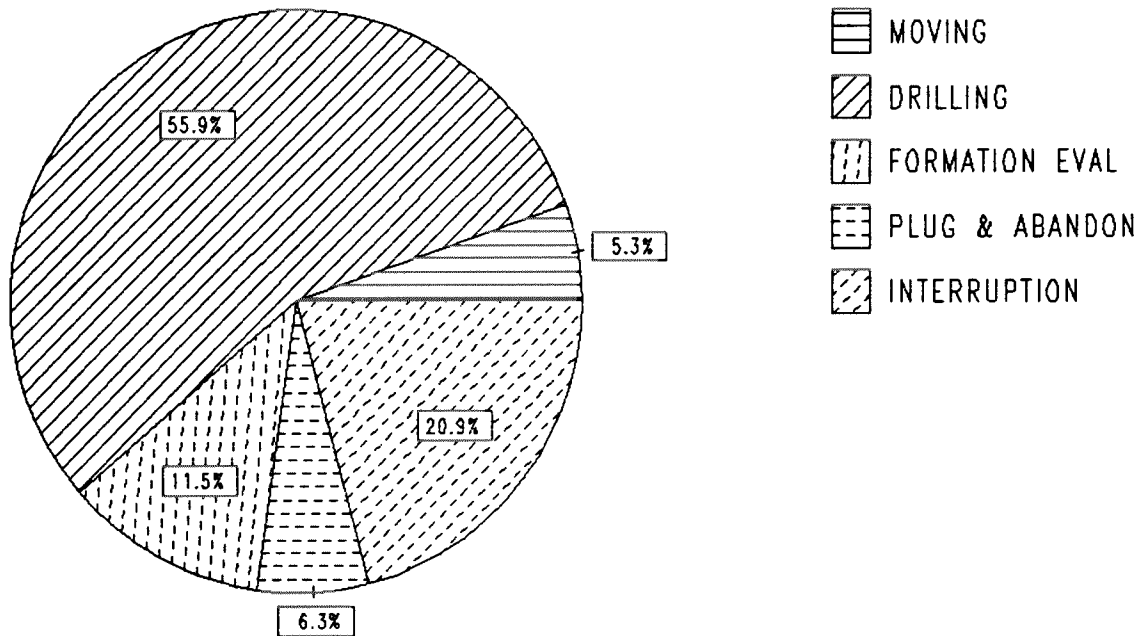
NONE

## AVAILABLE LOGS

LOG TYPE	INTERVAL	1/200	1/500
DIFL BHC AC GR	120 - 520	X	X
DIFL BHC AC	499 - 1170	X	X
DIFL BHC AC	1150 - 2763	X	X
DIFL BHC AC	2740 - 3324	X	X
DIFL BHC AC	3185 - 3623	X	X
CDL	499 - 1170	X	X
CDL CNL	1150 - 2760	X	X
CDL CNL	2740 - 3623	X	X
DLL MLL	3200 - 3300	X	X
CDM	2275 - 2762	X	
CDM	2742 - 3623	X	
CDM AP	2275 - 2762	X	X
CDM AP	2742 - 3623	X	X
FMT	3238 - 3279		X
FMT	3238 - 3571		X
FMT	3239 - 3248		X
CALIPER	1500 - 2743	X	
CBL VDL AC	200 - 1150	X	
CBL VDL AC	120 - 2740	X	
DRILLING DATA PRESSURE	123 - 3622		1:5000
TEMPERATURE DATA	123 - 3622		1:5000
PRESSURE EVALUATION	123 - 3622		1:5000
MUD	123 - 3622		X
VELOCITY (L.T.S.)	181 - 3616		X
(+ Airgun Well Velocity Survey & C.L.D.			1 stk)
(+ Synthetic Seismogram (Marine), 10-20 cm/s,			2 stk)
(+ Synthetic Seismogram, b/p-w/t, 10-20 cm/s,			6 stk)
(+ Two Way Travel Time, 10-20 cm/s,			2 stk)
(+ VSP, b/p-w/t, 10-20 cm/s, proc. March-84,			13 stk)

# DAILY DRILLING REPORT SYSTEM

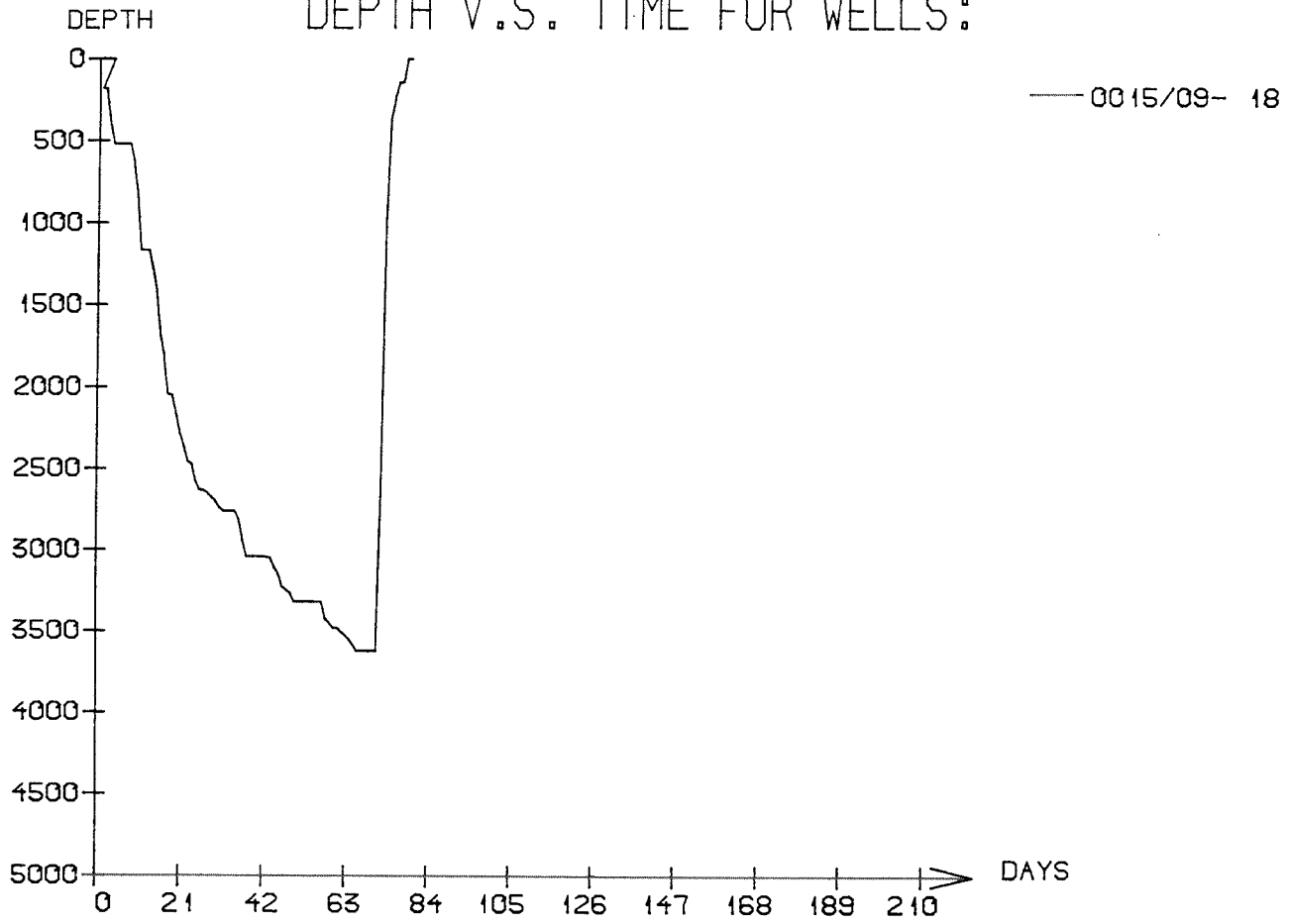
Main operation : 15/09-18



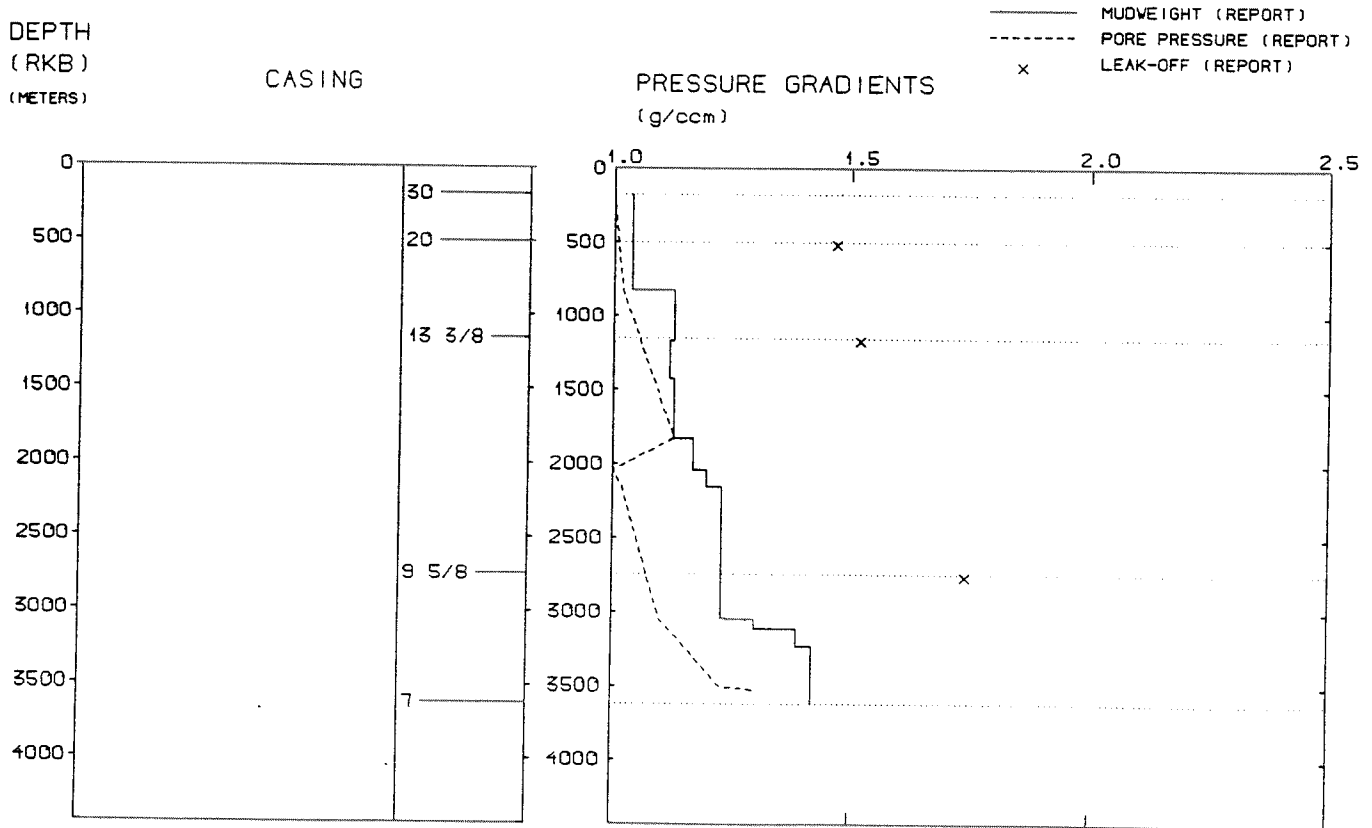
Total : 1972,00 HRS

Main operation	Hours	% of total
MOVING	105,00	5,32
DRILLING	1103,00	55,93
FORMATION EVAL	226,00	11,46
PLUG & ABANDON	125,00	6,34
INTERRUPTION	413,00	20,94

DEPTH V.S. TIME FOR WELLS:



WELL: 001509 18 PRESSURE COMPOSITE PLOT



## WELL HISTORY - 15/9-18

### GENERAL:

The wildcat 15/9-18 was designed primary to test hydrocarbon accumulations in the Middle Jurassic Hugin Formation. Secondary objectives were Paleocene sandstones of the Heimdal and Sleipner Formations and sandstones of Triassic age. The Hugin Formation was found hydrocarbon bearing but the hydrocarbons were immovable. The well did not encounter other hydrocarbon bearing intervals.

### OPERATIONS:

The well 15/9-18 was spudded 16.12.83 by the semi-submersible rig Deepsea Bergen. Four cores were cut, two in the Paleocene and two in the Middle Jurassic sequence.

No major problems occurred while drilling this well. Tight hole problems were experienced in the 12 1/4" hole section. The well was drilled using water based mud.

### TESTING:

No DST's were performed in well 15/9-18.

# GEOLOGICAL TOPS

WELL: 15/ 9-18

	Depth m (RKB)
Nordland Group	120.000
Utsira Fm	865.000
Hordaland Group	1200.000
Frigg Fm	2070.000
Rogaland Group	2292.000
Balder Fm	2292.000
Sele Fm	2338.000
Lista Fm	2405.000
Heimdal Fm	2465.000
Våle Fm	2647.000
Shetland Group	2702.000
Ekofisk Fm	2702.000
Tor Fm	2706.000
Hod Fm	2843.000
Blodøks Fm	2931.000
Svarte Fm	2993.500
Cromer Knoll Group	3013.500
Rødby Fm	3013.500
Sola Fm	3061.000
Åsgard Fm	3076.000
Viking Group	3107.000
Draupne Fm	3107.000
Heather Fm	3213.000
Vestland Group	3237.500
Hugin Fm	3237.500
Sleipner Fm	3410.000
Triassic	3593.000
Smith Bank Fm	3593.000
TD -	3622.000