

Well no : 30/ 6-06 Operator : STATOIL

Coordinates : 60 36 43.43 N UTM coord. : 6719749 N  
 02 49 54.11 E 490785 E

Licence no : 053 Permit no : 311

Rig : DEEPSEA SAGA

Contractor : K/S DEEP SEA COMPANY A/S

Bottom hole temperature : 90 deg.C Elev. KB : 25 M

Spud. date : 82.01.09 Water depth : 113 M

Compl. date : 82.03.24 Total depth : 3225 M

Spud. class : APPRAISAL Form. at TD : JURASSIC

Compl. class : P&A. DRY HOLE Prod. form :

Seisloca : 8006 - 203 SP 280

#### LICENSEES

-----

13,330 ELF AQUITAINE NORGE A/S  
 12,500 NORSK HYDRO A/S  
 10,000 MOBIL EXPLORATION NORWAY INC.  
 7,500 SAGA PETROLEUM A/S  
 50,000 DEN NORSKE STATS OLJESELSKAP A/S  
 6,670 TOTAL MARINE NORSK A/S

#### CASING AND LEAK-OFF TESTS

Type	Casing diam.	Depth below KB	Hole diam.	Hole depth below KB	Lot mud eqv. g/cm
CONDUCTOR	30	199,5	36	200,0	
SURF.COND.	20	605,0	26	620,0	01,48
INTERM.	13 3/8	1793,0	17 1/2	1815,0	01,68
INTERM.	9 5/8	2251,0	12 1/4	2565,0	01,74
LINER	7	3220,0	8 1/2	3225,0	

#### CONVENTIONAL CORES

Core no.	Intervals cored meters	Recovery M %	Series
1	2921.0 - 2936.5	11.9 76.8	M.JURAASSIC
2	2936.5 - 2954.3	17.8 100.0	M.JURAASSIC
3	2954.3 - 2964.0	0.5 5.2	M.JURAASSIC

DRILL STEM TEST									
TEST NO	DEPTH BELOW KB	CHOKE SIZE mm	RECOVERY					PRESS. (psi)	
			OIL Sm <sup>3</sup> /d	GAS M Sm <sup>3</sup> /d	OIL GRAV. g/cm <sup>3</sup>	GAS GRAV. rel. air	GOR m <sup>3</sup> /m <sup>3</sup>	FSIP	FFP
			1	2946 - 2962	25.4	381	WATER		

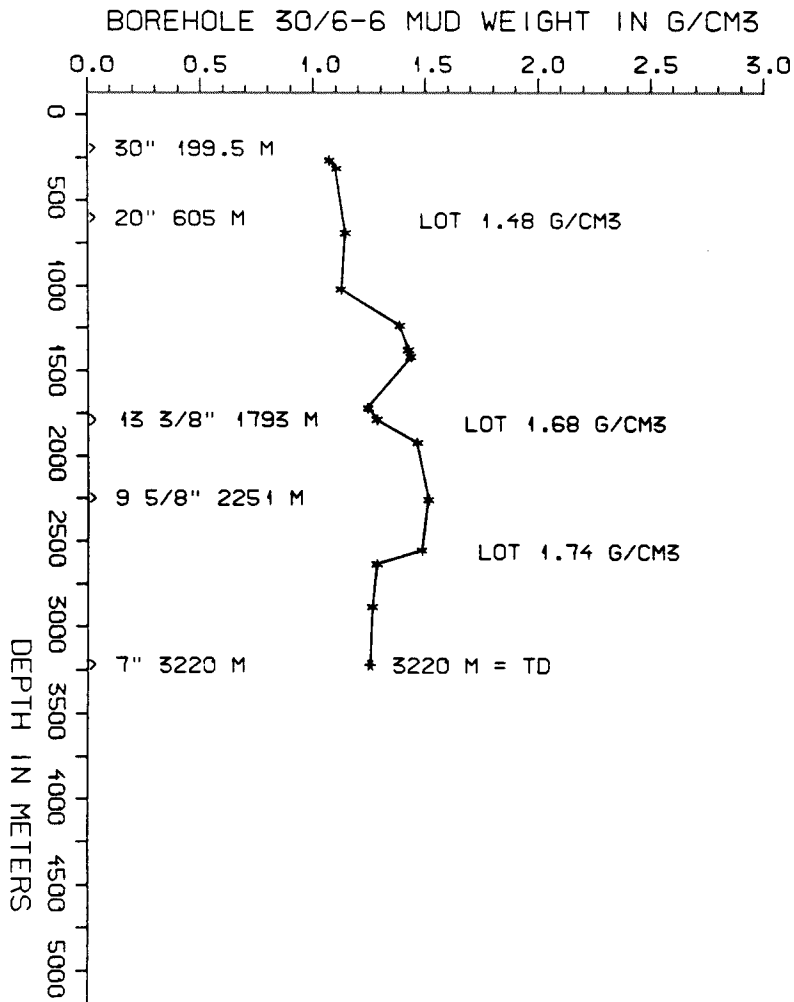
AVAILABLE LOGS				
LOG TYPE	INTERVALS	1/200	1/500	
ISF SONIC MSFL GR	131 - 616	x		
ISF SONIC	605 - 1814	x		
ISF LSS MSFL	1791 - 2549	x		
ISF SONIC	2551 - 3223	x		
ISF SONIC GR	131 - 3223			x
FDC CNL	605 - 1815	x		x
FDC CNL	1791 - 2554	x		x
FDC CNL	2551 - 3223	x		x
CDM	2551 - 3224	x		
CDM AP	2552 - 3223	x		x
GEODIP	2800 - 3000	1:40		
DIRECTIONAL SURVEY	2551 - 3223	1.2 m/cm		
RFT (TEST: ALL, - HP GAUGE)		x		
RFT (TEST: ALL, - RFT GAUGE)		x		
CBL VDL	450 - 1790	x		
CBL VDL	1735 - 2551	x		
CBL VDL	2400 - 3046	x		
MUD	200 - 3225			x
VELOCITY	131 - 3223	1:1000		x

(Air Gun Well Velocity Survey & C.L.D. 1stk)  
(Synthetic Seismogram Marine, 10cm/s, 1stk)  
(Synthetic Seismogram, b/p-w/t, 10cm/s, 2stk)  
(Two Way Travel Time, 10 cm/s, 1stk)

MUD PROPERTIES			
DEPTH BELOW KB m	WEIGHT g/cm <sup>3</sup>	FUNNEL VISC. sec	FILTRATE LOSS cm <sup>3</sup>
200	1.04	40	
250	1.07	42	
470	1.08	55	
625	1.11	66	
710	1.10	68	
955	1.09	53	
1165	1.35	86	
1310	1.39	57	
1350	1.40	55	
1655	1.21	56	
1725	1.25	52	
1860	1.43	54	
2190	1.48	54	
2485	1.45	53	
2570	1.25	49	
2680	1.24	55	
2815	1.23	55	

DRILL BIT CUTTINGS AND WET SAMPLES		
SAMPLE TYPE	INTERVAL BELOW KB	NUMBER OF SAMPLES
CUTTINGS	200 - 3225	700
WET SAMPLES	200 - 3224	378

SHALLOW GAS	
DEPTH INTERVAL m KB	REMARKS
	NONE



## WELL HISTORY - 30/6-6

### GENERAL :

Well 30/6-6 was drilled by "Deepsea Saga". The primary target was to test possible hydrocarbon accumulations in Middle Jurassic sandstones on the 30/6-Alpha structure. This is the fifth well drilled on this structure. No hydrocarbons were encountered. The well was production tested and tests on reservoir parameters were carried out, including use of tritium tracers. The well was plugged and abandoned as a dry hole.

### OPERATIONS :

Well 30/6-6 was spudded 09.01.82 by the drilling rig "Deepsea Saga". Drilling operations were performed without any specific problems down to approx. 1300 m. At this depth problems with excessive torque and drag on short trips occurred. The mud weight was then reduced from 1.4 to 1.29. Three cores were taken in the 8 1/2" hole before reaching TD at 3225 m. No indications of H<sub>2</sub>S were seen in this well.

### TESTING :

One DST was performed in the water zone in the Etive fm. This was followed by an injectivity test through the same perforations.

# GEOLOGICAL TOPS

WELL: 30/6-6

	Depth m (RKB)
Nordland Group	138 m
Utsira Fm	703 m
Hordaland Group	893 m
Rogaland Group	2092 m
Balder Fm	2092 m
Sele Fm	2188 m
Lista Fm	2289 m
Shetland Group	2338 m
Cromer Knoll Group	2552 m
Viking Group	2587 m
Draupne Fm	2587 m
Heather Fm	2700 m
Brent Group	2820 m
Tarbert Fm	2820 m
Ness Fm	2861 m
Etive Fm	2931 m
Dunlin Group	2965 m
Drake Fm	2965 m
Cook Fm	3152 m
	<u>TD = 3225 m</u>