

Well no : 2/ 2-03 Operator : SAGA

Coordinates : 56 47 36.42 N UTM coord. : 6294616 N
 03 25 38.14 E 526100 E

Licence no : 066 Permit no : 362

Rig : TREASURE SAGA Rig type : SEMI-SUB.

Contractor : WILHELMOSEN OFFSHORE SERVICES

Bottom hole temperature : 126 deg.C Elev. KB : 27 M

Spud. date : 83.02.04 Water depth : 65 M

Compl. date : 83.05.11 Total depth : 4100 M

Spud. class : WILDCAT Form. at TD : TRIASSIC

Compl. class : P&A. DRY HOLE Prod. form :

Seisloca : SG 8252 - 258 SP 301

LICENSEES

5,000 ARCO NORWAY INC.
 10,000 NORSK HYDRO PRODUKSJON A.S
 25,000 MOBIL DEVELOPMENT NORWAY A/S
 10,000 SAGA PETROLEUM A.S
 50,000 DEN NORSKE STATS OLJESELSKAP A.S

CASING AND LEAK-OFF TESTS

Type	Casing diam.	Depth below KB	Hole diam.	Hole depth below KB	Lot mud eqv. g/cm ³
CONDUCTOR	30	214,0	36	215,0	
SURF.COND.	20	650,0	26	655,0	1,39
INTERM.	13 3/8	1897,0	17 1/2	1910,0	1,93
INTERM.	9 5/8	3516,0	12 1/4	3523,0	2,14
OPEN HOLE			8 1/2	4100,0	

PLUGGED BACK AND SIDETRACKED FROM 3054 M.

CONVENTIONAL CORES

Core no.	Intervals cored meters	Recovery M %	Series
1	3887.7 - 3905.5	17.3 97.2	UPPER JURASSIC

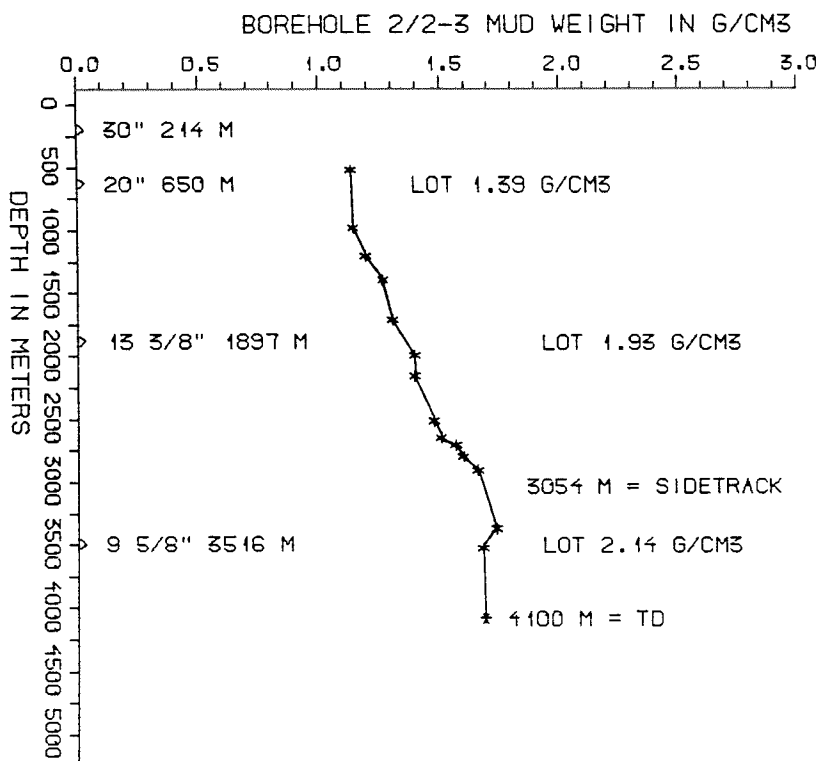
DRILL STEM TEST									
TEST NO	DEPTH BELOW KB	CHOKE SIZE mm	RECOVERY					PRESS. (psi)	
			OIL Sm ³ /d	GAS M Sm ³ /d	OIL GRAV. g/cm ³	GAS GRAV. rel. air	GOR m ³ /m ³	FSIP	WHP
	NONE								

AVAILABLE LOGS			
LOG TYPE	INTERVALS	1/200	1/500
DIFL BHC AC	214 - 654	X	X
DIFL BHC AC	640 - 1911	X	X
DIFL BHC AC GR	1850 - 3522	X	X
DIFL BHC	3485 - 4104	X	X
FDC CNL	1882 - 3523	X	X
FDC CNL	3517 - 4099	X	X
CDM	3516 - 4101	X	
CDM AP	3516 - 4101	X	X
SPECTRALOG	3517 - 4094	X	X
CBL VDL AC	1600 - 3517	X	
MUD	216 - 4100		X
VELOCITY	194 - 4077	1:1000	
VELOCITY (SEISM. CALIBR.)	214 - 4102		X
(Synthetic seismogram, geogram			6 stk)
(Synthetic seismogram, 10-20 cm/s,			16 stk)

MUD PROPERTIES			
DEPTH BELOW KB m	WEIGHT g/cm3	FUNNEL VISC. sec	FILTRATE LOSS cm3
450	1.10	50	
900	1.11	51	
1130	1.16	51	
1320	1.23	60	
1630	1.27	25	
1920	1.36	49	
2080	1.36	59	
2440	1.44	50	
2570	1.47	52	
2630	1.53	52	
2720	1.56	52	
2830	1.62	57	
3300	1.70	50	
3450	1.64	45	
4000	1.68	51	
4100	1.66	51	

DRILL BIT CUTTINGS AND WET SAMPLES		
SAMPLE TYPE	INTERVAL BELOW KB	NUMBER OF SAMPLES
CUTTINGS	220 - 4100	513
WET SAMPLES	220 - 4100	420

SHALLOW GAS	
DEPTH INTERVAL m KB	REMARKS
	NONE



WELL HISTORY - 2/2-3

GENERAL:

The wildcat 2/2-3 was drilled on a domal structure, south of a major WNW-ESE fault zone. Main objective was the Upper Jurassic sandstone in the Vestland Group. Secondary target was the Middle Jurassic and Upper Triassic sandstones. Two sandstone intervals of Upper Jurassic age separated by a shale/siltstone sequence were penetrated. The upper sandstone contained only traces of migrated hydrocarbons.

OPERATIONS:

The well was spudded 04.02.83 by the semi-submersible rig *Treasure Saga*. One core of Jurassic age was cut. At 3286 m the string was lost after a wiper trip, the well had to be plugged back to 3053 m and sidetracked from this point. At 3420 m the string was lost again but was recovered. The well was drilled using waterbased mud.

TESTING:

The well was not tested.

GEOLOGICAL TOPS
WELL 2/2-3

	Depth m (RKB)
Nordland Group	92,0
Hordaland Group	1544,0
Rogaland Group	2827,0
Balder Fm	2827,0
Sele Fm	2856,0
Lista Fm	2906,0
Maureen Fm Eqv	2947,0
Chalk Group	2965,0
Ekofisk Fm	2965,0
Tor Fm	3090,0
Hod Fm	3442,0
Cromer Knoll Group	3494,0
Rødby Fm	3494,0
Valhall Fm	3499,0
Tyne Group	3523,0
Mandal Fm	3523,0
Farsund Fm	3527,0
Vestland Group	3880,0
Ula Fm	3880,0
Triassic	3930,0
Smith Bank Fm	3930,0
TD =	4100,0