

Well no : 31/ 6-04 X

Operator : STATOIL

Coordinates : 60 37 06.05 N UTM coord. : 6720706 N  
                   03 48 20.36 E UTM zone 31 544097 E  
 Licence no : 085 Permit no : 407  
 Rig : DEEPSEA BERGEN Rig type : SEMI-SUB.  
 Contractor : ODFJELL DRILLING AND CONSULTING COMPANY A/S  
 Bottom hole temperature : <37 deg.C Elev. KB : 23 M  
 Spud date : 84.03.05 Water depth : 305 M  
 Compl. date : 84.03.16 Total depth : 820 M  
 Spud class. : APPRAISAL Age at TD : TERTIARY  
 Compl. class. : JUNKED  
 Seis. loc. : NH 8202 - 120 SP. 246

## LICENSEES

-----  
 9.000 NORSK HYDRO PRODUKSJON A.S  
 6.000 SAGA PETROLEUM A.S.  
 85.000 DEN NORSKE STATS OLJESELSKAP A.S

## CASING AND LEAK-OFF TESTS

Type	Casing diam.	Depth below KB	Hole diam.	Hole depth below KB	Lot mud eqv. g/cm <sup>3</sup>
-----	-----	-----	-----	-----	-----
CONDUCTOR	30	390.0	36	392.0	
OPEN HOLE			26	820.0	

MUD PROPERTIES

Depth below KB meter	Mud weigh g/cm3	Funnel viscosity s/qt	Mud type
470.0	1.05	60.0	WATER BASED
720.0	1.09	45.0	WATER BASED

DRILL STEM TEST

NO DST'S WERE PERFORMED IN THIS WELL

DRILL BIT CUTTINGS AND WET SAMPLES

SAMPLE TYPE	INTERVAL BELOW KB	NUMBER OF SAMPLES
CUTTINGS	400 - 820	40
WET SAMPLES	400 - 820	36

SHALLOW GAS

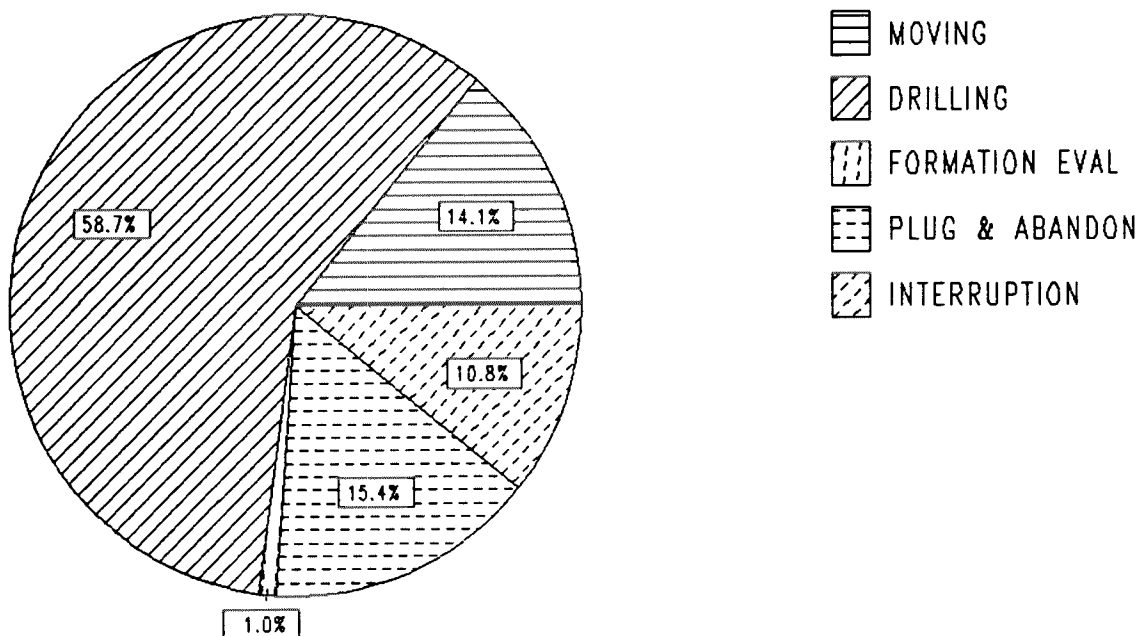
INTERVAL BELOW KB	REMARKS
	NONE

## AVAILABLE LOGS

<i>LOG TYPE</i>	<i>INTERVAL</i>	<i>1/200</i>	<i>1/500</i>
<i>DIFL BHC AC GR</i>	<i>328 - 822</i>	<i>X</i>	<i>X</i>
<i>TEMPERATURE DATA</i>	<i>328 - 820</i>	<i>1:5000</i>	
<i>WIRELINE DATA PRESSURE</i>	<i>328 - 820</i>	<i>1:5000</i>	
<i>DRILLING DATA PRESSURE</i>	<i>328 - 820</i>	<i>1:5000</i>	
<i>PRESSURE EVALUATION</i>	<i>328 - 820</i>	<i>1:5000</i>	
<i>MUD</i>	<i>328 - 820</i>		<i>X</i>

# DAILY DRILLING REPORT SYSTEM

Main operation : 31/06-04 X

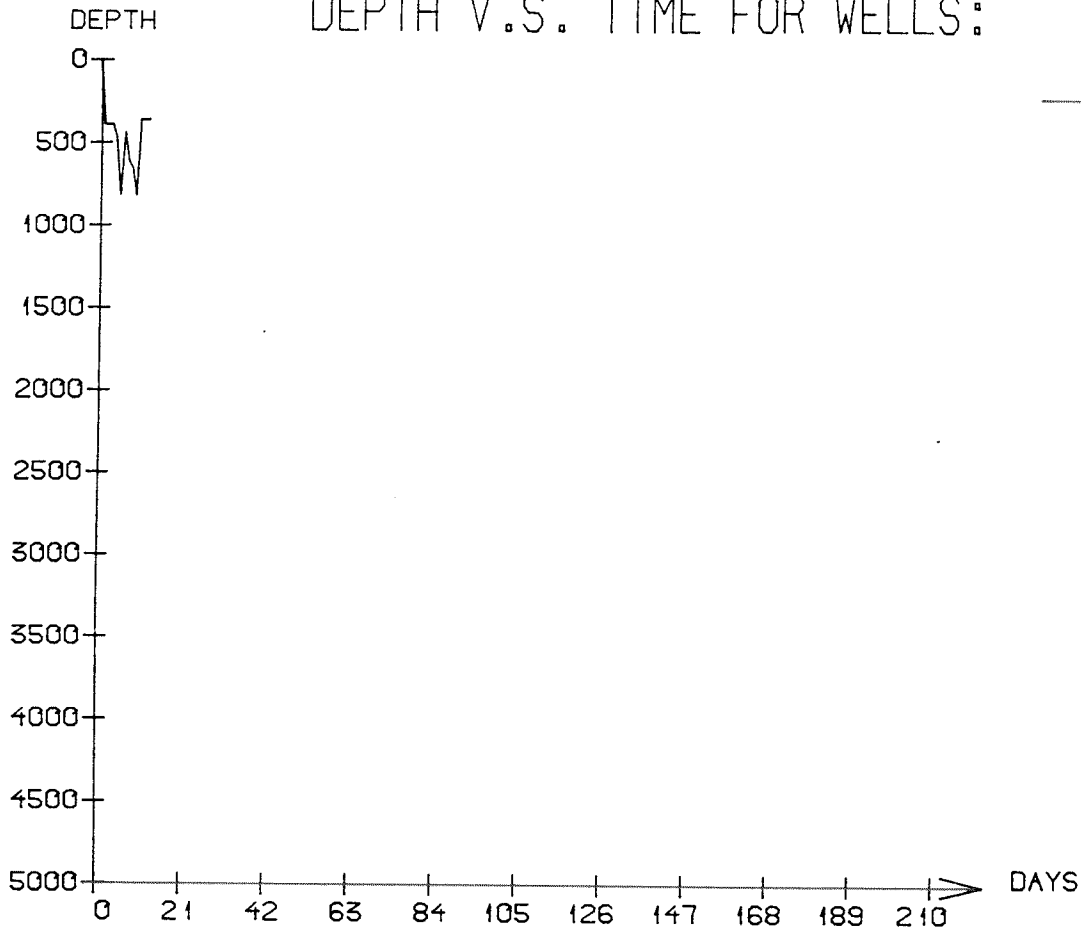


Total : 306,50 HRS

Main operation	Hours	% of total
MOVING	43,50	14,19
DRILLING	179,00	58,40
FORMATION EVAL	3,50	1,14
PLUG & ABANDON	47,50	15,50
INTERRUPTION	33,00	10,77

# DEPTH V.S. TIME FOR WELLS:

— 0031/06- 04X



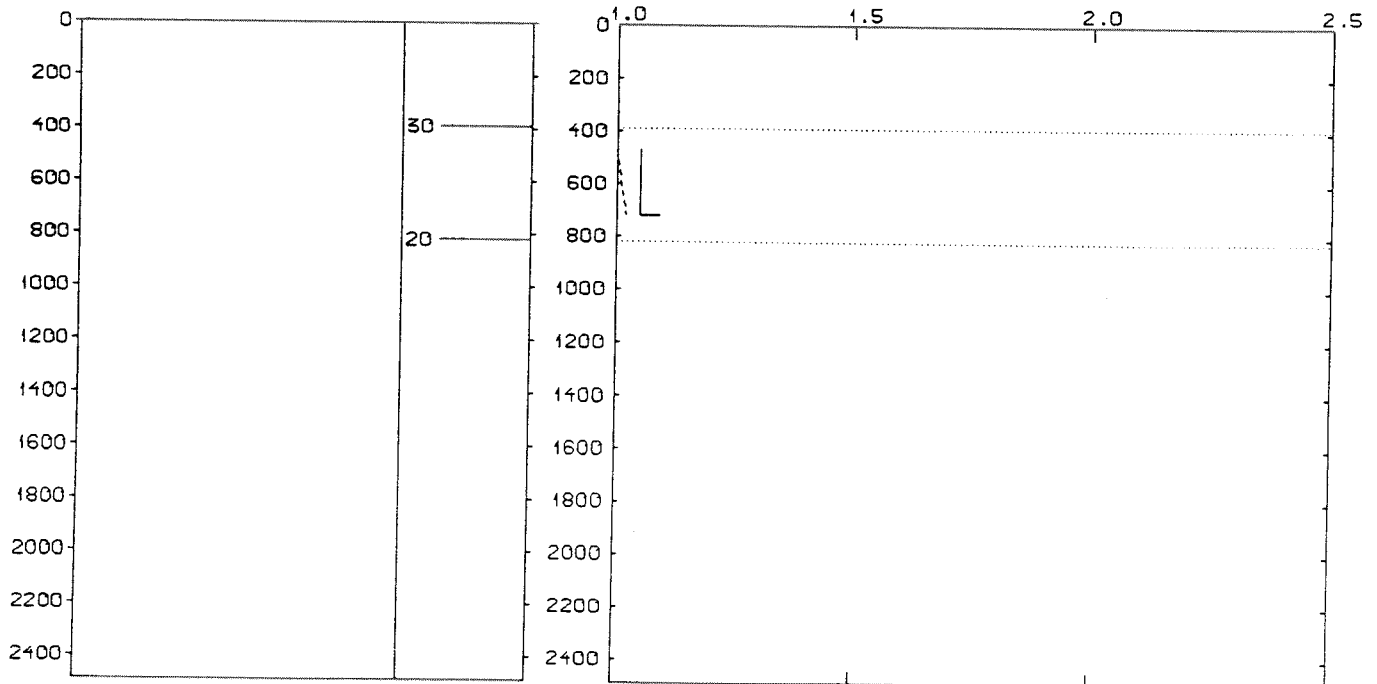
## WELL: 003106 04X PRESSURE COMPOSITE PLOT

— MUDWEIGHT (REPORT)  
 - - - - - PORE PRESSURE (REPORT)

DEPTH  
 (RKB)  
 (METERS)

CASING

PRESSURE GRADIENTS  
 (g/ccm)



## WELL HISTORY - 31/6-4 X

### GENERAL:

The main purpose of the appraisal well 31/6-4 X was to test possible oil and gas accumulations in sandstones of Upper to Middle Jurassic age. Due to deviation problems the hole was plugged and abandoned.

### OPERATIONS:

The well was spudded 05.03.84 by the semi-submersible rig Deepsea Bergen. No cores were cut in this well. After setting of the 30" casing a 12 1/4" pilot hole was drilled. When opening the pilot hole to 26" hole, the hole deviated to 12 3/4° at 662 m. Because of the deviation the well was plugged and abandoned. The well was drilled using water based mud.

### TESTING:

The well was not tested.

### NOTE:

The three licensees in licence 085 are equal, they do all three operate boreholes in the licence.

# GEOLOGICAL TOPS

WELL: 31/ 6-04 X

	<i>Depth m (RKB)</i>
<i>Nordland Group</i>	<i>328.000</i>
<i>Hordaland Group</i>	<i>515.000</i>
<i>TD =</i>	<i>820.000</i>