

Well no : 16/ 7-02 Operator : ESSO

Coordinates : 58 28 26.50 N UTM coord. : 6482040 N
 02 02 3.12 E 443667 E

Licence no : 072 Permit no : 0314

Rig : GLOMAR BISCAY II

Contractor : GLOBAL MARINE DRILLING COMPANY

Bottom hole temperature : 97 deg.C Elev. KB : 25 M

Spud. date : 82.01.11 Water depth : 83 M

Compl. date : 82.03.30 Total depth : 3146 M

Spud. class : WILDCAT Form. at TD : PERMIAN

Compl. class : P&A. GAS DISCOVERY Prod. form :

Seisloca : NH 8008 - 016 SP 1040

LICENSEES

 40,000 ESSO NORGE A/S LETING OG PRODUKSJON
 10,000 NORSK HYDRO A/S
 50,000 DEN NORSKE STATS OLJESELSKAP A/S

CASING AND LEAK-OFF TESTS

Type	Casing diam.	Depth below KB	Hole diam.	Hole depth below KB	Lot mud eqv. g/cm
CONDUCTOR	30	171,0	36	172,0	
SURF.COND.	20	502,0	26	522,0	1,73
INTERM.	13 3/8	1201,0	17 1/2	1217,0	1,88
INTERM.	9 5/8	2510,0	12 1/4	2536,0	2,00
OPEN HOLE			8 1/2	3146,0	

CONVENTIONAL CORES

Core no.	Intervals cored meters	Recovery		Series
		M	%	
1	2300.0 - 2301.5	1.5	100.0	TERTIARY
2	2347.0 - 2356.6	9.5	99.0	TERTIARY
3	2356.5 - 2376.0	19.5	100.0	L.JURASSIC
4	2675.0 - 2693.0	14.8	82.2	M.JURASSIC

DRILL STEM TEST									
TEST NO	DEPTH BELOW KB	CHOKE SIZE mm	RECOVERY					PRESS. (psi)	
			OIL Sm3 /d	GAS M Sm3 /d	OIL GRAV. g/cm3	GAS GRAV. rel. air	GOR m3/m3	FSIP	WHP
	NONE								

AVAILABLE LOGS				
LOG TYPE	INTERVALS	1/200	1/500	
IEL BHC GR AC	100 - 519	x	x	
IEL BHC	502 - 1216	x	x	
IEL BHC	1120 - 2391	x	x	
IEL BHC	2285 - 2527	x	x	
IEL BHC	2410 - 3135	x	x	
CDL CNL	1192 - 2528	x	x	
CDL CNL	2500 - 3136	x	x	
CAL	107 - 490	x	x	
CAL	110 - 521	x	x	
CAL	485 - 1209	x	x	
DLL MLL	2280 - 2472	x	x	
CDM	2200 - 2529	x		
CDM	2504 - 3135	x		
CDM AP	2200 - 2529	x	x	
CDM AP	2505 - 3135	x	x	
FMT	2299 - 2422	x *	x	
FMT	2675 - 2918	1:1000		
TEMPERATURE	108 - 1064	1:1000	x	
CBL VDL AC	1625 - 1900	x		
OVERPRESSURE	108 - 3146		x	
MUD	108 - 3146		x	
VELOCITY	100 - 3135		x	

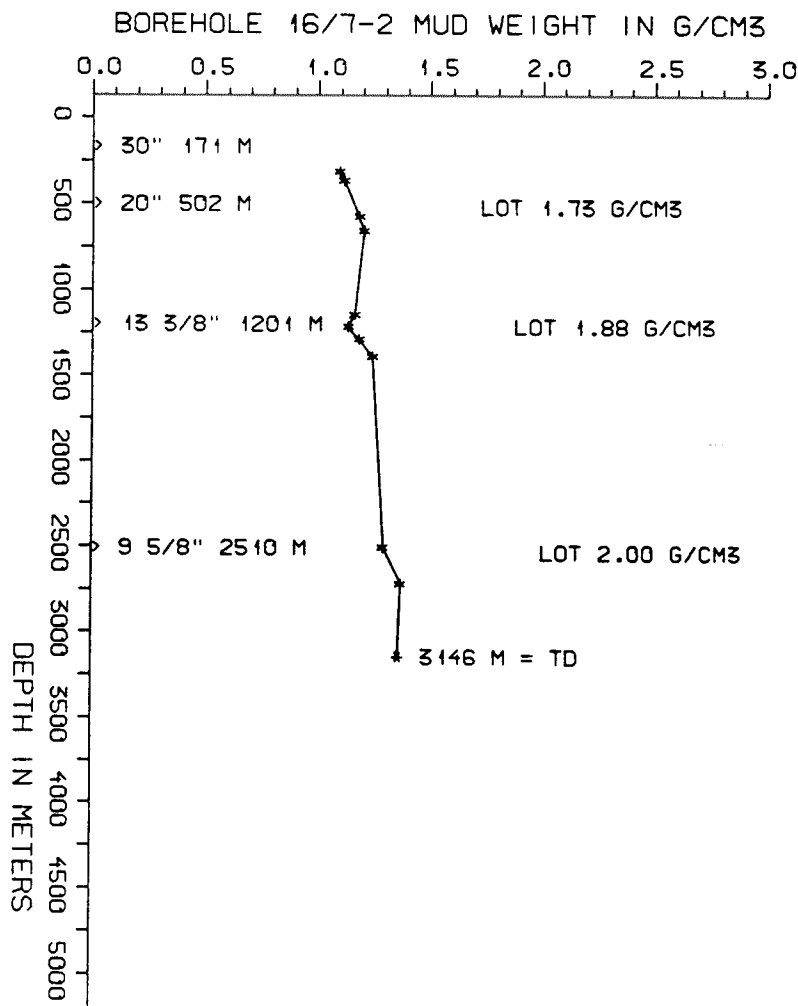
(Air Gun Well Velocity Survey & C.L.D. 1stk)
(Synthetic Seismogram Marine, 10 cm/s, 1stk)
(Synthetic Seismogram, b/p-w/t, 10 cm/s, 2stk)

* = Both scales on one log!

MUD PROPERTIES			
DEPTH BELOW KB m	WEIGHT g/cm3	FUNNEL VISC. sec	FILTRATE LOSS cm3
250	1.06	48	
300	1.08	45	
510	1.15	43	
590	1.17	45	
760	1.15	44	
1080	1.13	43	
1150	1.10	45	
1220	1.15	50	
1320	1.21	51	
1440	1.20	43	
2440	1.26	60	
2650	1.34	54	

DRILL BIT CUTTINGS AND WET SAMPLES		
SAMPLE TYPE	INTERVAL BELOW KB	NUMBER OF SAMPLES
CUTTINGS	180 - 3146	600
WET SAMPLES	180 - 3146	296

SHALLOW GAS	
DEPTH INTERVAL m KB	REMARKS
	NONE



WELL HISTORY - 16/7-2

GENERAL :

The primary objective of 16/7-2 was to test the presence of a stratigraphic trap in Paleocene sandstones. Secondary objectives were to test the Mesozoic structure where Triassic sands could be present and to test the Zechstein carbonate and Rotliegende sandstone plays. The well was the first to be drilled in connection with the 6th round awards. Gas was proven in small amounts in the Paleocene sandstones. All other targets proved to be water bearing.

OPERATIONS :

Well 16/7-2 was spudded 11.01.82 by the drilling rig "Glomar Biscay II". Drilling of the 36" and 26" holes went forth without any specific problems. While cementing the 20" casing, the cement slurry was overdisplaced. A remedial squeeze job was necessary. Problems also occurred when logging the 12 1/4" section due to tight hole. 3 cores were taken in this section. A core was taken in the 8 1/2" section before the well reached TD at 3146 m.

TESTING :

The well was not tested.

GEOLOGICAL TOPS

WELL: 16/7-2

	Depth m (RKB)
Nordland Group	108 m
Utsira Fm	794 m
Hordaland Group	1096 m
Rogaland Group	2148 m
Balder Fm	2148 m
Sele Fm	2204 m
Lista Fm	2268 m
Montrose Group	2338,5 m
Heimdal Fm	2338,5 m
Maureen Fm	2423 m
Chalk Group	2435 m
Tor Fm	2435 m
Hod Fm	2535 m
Viking Group	2579 m
Draupne Fm	2579 m
Vestland Group	2668 m
Hugin Fm	2668 m
Smith Bank Fm	2692 m
Zechstein Group	3010 m
Kupferschiefer Fm	3112 m
Rotliegendes Group	3117 m
Auk Fm	3117 m

TD = 3146 m