

Well no : 34/ 4-03 Operator : SAGA

Coordinates : 61 36 32.95 N UTM coord. : 6831115 N
 02 07 34.42 E 453647 E

Licence no : 057 Permit no : 306

Rig : DYVI ALPHA

Contractor : DYVI OFFSHORE A/S

Bottom hole temperature : 127 deg.C Elev. KB : 25 M

Spud. date : 81.10.16 Water depth : 366 M

Compl. date : 82.03.30 Total depth : 4460 M

Spud. class : WILDCAT Form. at TD : TRIASSIC

Compl. class : P&A. DRY HOLE. Prod. form :

Seisloca : SG 8020 - 409 SP 580

LICENSEES

5,000 AMERADA HESS NORWEGIAN EXPLORATION A/S
 10,000 AMOCO NORWAY OIL COMPANY
 15,000 DEMINEX (NORGE A/S) A/S
 15,000 SAGA PETROLEUM A.S
 50,000 DEN NORSKE STATS OLJESELSKAP A.S
 5,000 TEXAS EASTERN NORWEGIAN INC.

CASING AND LEAK-OFF TESTS

Type	Casing diam.	Depth below KB	Hole diam.	Hole depth below KB	Lot mud eqv. g/cm
CONDUCTOR	30	516,0	36	516,0	
SURF.COND.	20	1006,0	26	1019,0	1,52
INTERM.	13 3/8	2197,0	17 1/2	2209,0	1,76
INTERM.	9 5/8	3388,0	12 1/4	3406,0	1,90
OPEN HOLE			8 1/2	4460,0	

CONVENTIONAL CORES

Core no.	Intervals cored meters	Recovery		Series
		M	%	
1	3567.0 - 3576.9	9.1	91.9	L.JURASSIC
2	3576.9 - 3585.5	8.0	93.0	L.JURASSIC
3	3990.9 - 4006.8	15.9	100.0	M.JURASSIC
4	4358.0 - 4368.6	7.5	70.8	E.JURASSIC

DRILL STEM TEST									
TEST NO	DEPTH BELOW KB	CHOKE SIZE mm	RECOVERY					PRESS. (psi)	
			OIL Sm3 /d	GAS M Sm3 /d	OIL GRAV. g/cm3	GAS GRAV. rel. air	GOR m3/m3	FSIP	WHP
				NONE					

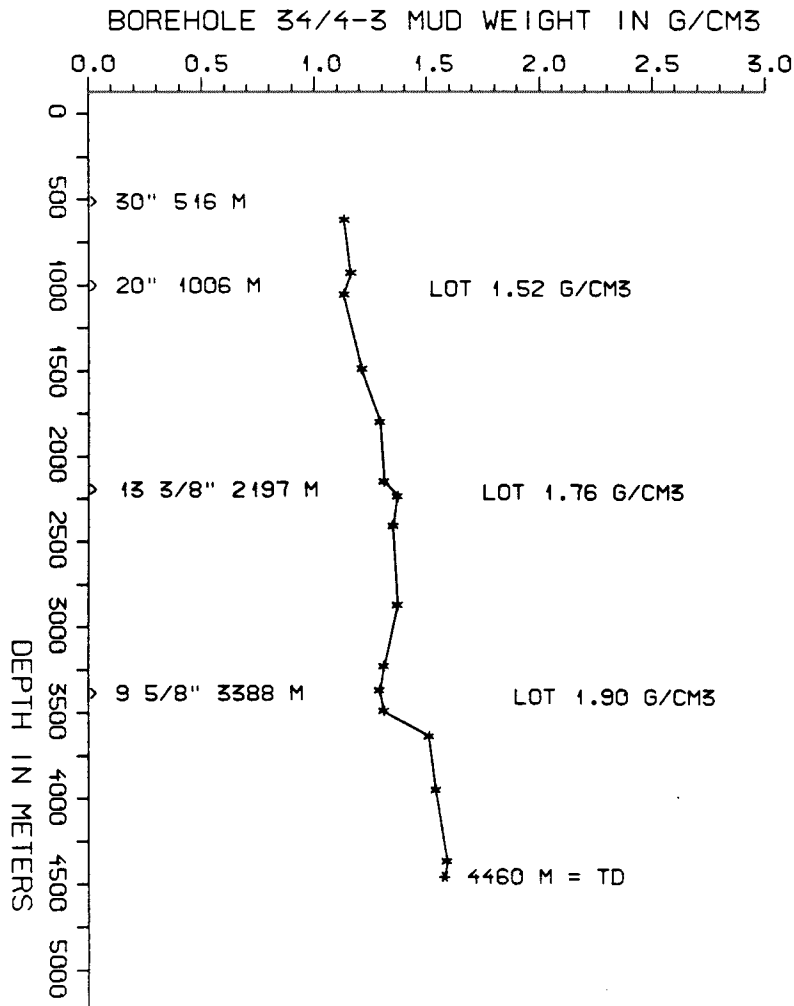
AVAILABLE LOGS				
LOG TYPE	INTERVALS	1/200	1/500	
GR	375 - 516	x	x	
ISF BHC GR	516 - 1017	x	x	
ISF BHC	1006 - 2208	x	x	
ISF BHC	2193 - 3407	x	x	
ISF BHC	3390 - 3682	x	x	
ISF BHC	3390 - 4459	x	x	
FDC CNL	1006 - 2209	x	x	
FDC CNL	2193 - 3412	x	x	
FDC CNL	3390 - 3684	x	x	
FDC CNL	3684 - 4461	x	x	
DLL MSFL	3960 - 4460	x	x	
CDM	3390 - 4413	x		
CDM AP / CYBERDIP	3390 - 4413		x	
RFT	3709 - 4385	x		
NGL	3390 - 4455	x		
NGT RATIO COMP - UTATION	3390 - 4459	x		
CBL VDL	1770 - 2365	x		
PRESSURE	516 - 4460	1:5000		
MUD	395 - 4460		x	
VELOCITY	516 - 4459	1:1000	x	

(Air Gun Well Velocity Survey & C.L.D. 1stk)
(Synthetic Seismogram Marine, 10cm/s, 1stk)
(Synthetic Seismogram, b/p-w/t, 10cm/s, 2stk)
(Two Way Travel Time, 10 cm/s, 1stk)

MUD PROPERTIES			
DEPTH BELOW KB m	WEIGHT g/cm ³	FUNNEL VISC. sec	FILTRATE LOSS cm ³
555	1.10		
865	1.13		
990	1.10		
1420	1.18		
1735	1.26		
2080	1.28		
2170	1.34		
2340	1.32		
2800	1.34		
3160	1.28		
3300	1.26		
3420	1.28		
3570	1.48		
3880	1.51		
4300	1.56		

DRILL BIT CUTTINGS AND WET SAMPLES		
SAMPLE TYPE	INTERVAL BELOW KB	NUMBER OF SAMPLES
CUTTINGS		
WET SAMPLES	520 - 4460	788

SHALLOW GAS	
DEPTH INTERVAL m KB	REMARKS
	NONE



WELL HISTORY - 34/4-3

GENERAL :

34/4-3 was drilled as the third well on the Gamma Structure and had a wedge structure between the Base Cretaceous Unconformity and the Late Jurassic Unconformity as primary target. Secondary objectives were to penetrate the Brent Equivalent and the Statfjord formation. Minor shows were reported from the Late Jurassic and the basal part of the Cretaceous.

OPERATIONS :

The rig "Dyvi Alpha" spudded well 34/4-3 on 16.10.81 after waiting on location for two weeks due to bad weather. The 26" section was drilled with a 21 1/4" BOP installed but after pulling the riser and the BOP a 26" bit was run in the hole since the underreamer did not perform. Drilling of the 17 1/2" section was delayed by nearly two weeks due to the 18 3/4" BOP not meeting requirements. During drilling of the 12 1/4" section one experienced electrical problems on the draw works as well as mud pump breakdowns and high pressures through the main parts of the section. Drilling the 8 1/2" section included 4 core runs, killing a water/methane kick at 3550 m., changing leaking seals on riser and two intermediate log runs. TD was reached 15.03.82 at 4460 m. Logging was finished 5 days later.

TESTING :

The well was not tested.

GEOLOGICAL TOPS

WELL: 34/4-3

	Depth m (RKB)
Nordland Group	391 m
Utsira Fm	1136 m
Hordaland Group	1243 m
Rogaland Group	1727 m
Balder Fm	1727 m
Lista/Sele Fm	1769 m
Shetland Group	1891 m
Cromer knoll Group	3512 m
Viking Group	3526 m
Draupne Fm	3526 m
Heather Fm	3784 m
Brent Group ?	3987 m
Dunlin Group	4131 m
Drake Fm	4131 m
Cook Fm	4226 m
Burton Fm	4257 m
Amundsen Fm	4281 m
Statfjord Fm	4353 m
Cormorant Fm	4411 m

TD = 4460 m