

DRILL STEM TEST									
TEST NO	DEPTH BELOW KB	CHOKE SIZE mm	RECOVERY					PRESS. (psi)	
			OIL Sm3 /d	GAS M Sm3 /d	OIL GRAV. g/cm3	GAS GRAV. rel. air	GOR m3/m3	FSIP	WHP
	NONE								

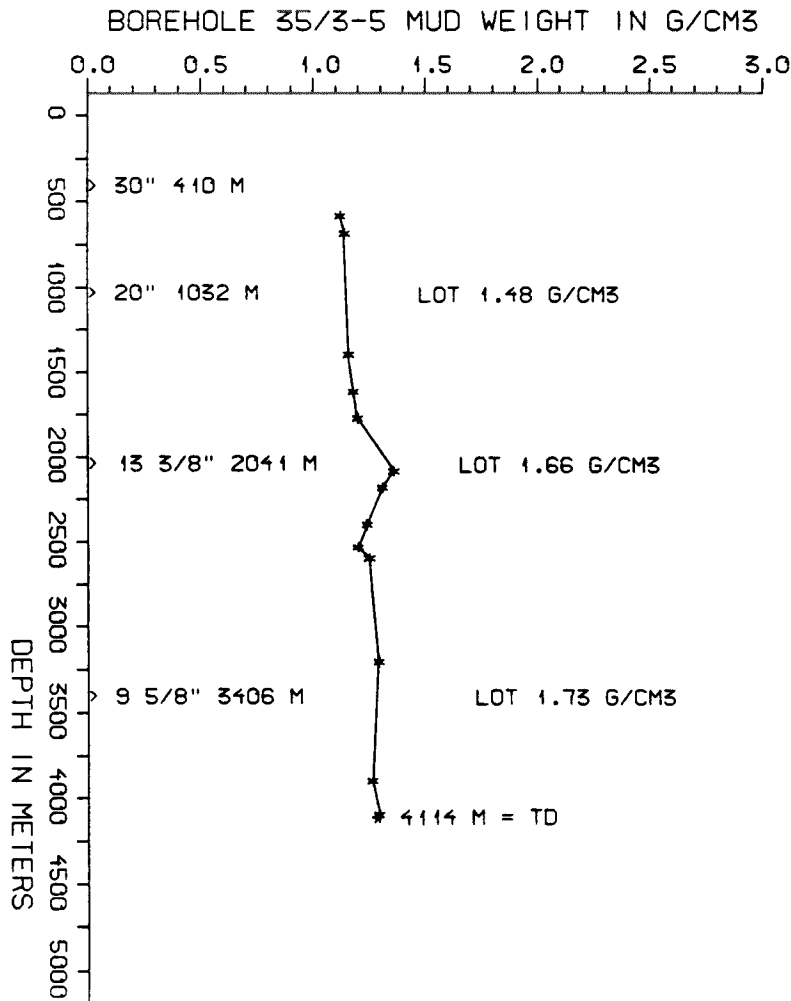
AVAILABLE LOGS				
LOG TYPE	INTERVALS	1/200	1/500	
GR	290 - 410	x	x	
ISF BHC GR	410 - 1044	x	x	
ISF BHC	1032 - 2051	x	x	
ISF BHC MSFL	2041 - 3411	x	x	
ISF BHC MSFL	3406 - 3724	x	x	
ISF BHC MSFL	3700 - 4113	x	x	
FDC	1032 - 2051	x	x	
LDL CNL	2040 - 3412	x	x	
LDL CNL	3406 - 3719	x	x	
LDL CNL	3700 - 4113	x	x	
SHDT	2040 - 3412	x		
CDM	3406 - 4113	x		
CDM AP	2033 - 3416	x	x	
CDM AP	3404 - 4110	x	x	
RFT	3223 - 3397	x		
RFT	3482 - 3599	x		
NGS	3700 - 4100	x	x	
TEMPERATURE	200 - 1028	x	x	
TEMPERATURE	510 - 2014	x	x	
CBL VDL	290 - 1032	x		
CBL VDL	293 - 2041	x		
CBL VDL	1680 - 3225	x		
PRESS. EVALUATION	291 - 4110	1:5000		
TEMPERATURE DATA	291 - 4110	1:5000		
MUD	219 - 4110		x	
VELOCITY	410 - 4103	1:1000	x	

(Air Gun Well Velocity Survey & C.L.D. 1stk)
(Synthetic Seismogram Marine, 10cm/s, 1stk)
(Synthetic Seismogram, b/p-w/t, 10cm/s, 2stk)
(Two Way Travel Time, 10 cm/s, 1stk)
(VSP, b/p-w/t, 10 cm/s, proc:Sept-82, 12stk)

MUD PROPERTIES			
DEPTH BELOW KB m	WEIGHT g/cm ³	FUNNEL VISC. sec	FILTRATE LOSS cm ³
520	1.09	40	
620	1.11	40	
1040	1.10	36	
1110	1.11	37	
1330	1.13	40	
1550	1.15	43	
1710	1.17	42	
2025	1.33	58	
2120	1.28	60	
2335	1.21	44	
2470	1.17	42	
2535	1.22	49	
3140	1.26	47	
3830	1.23	53	
4030	1.26	56	

DRILL BIT CUTTINGS AND WET SAMPLES		
SAMPLE TYPE	INTERVAL BELOW KB	NUMBER OF SAMPLES
CUTTINGS		
WET SAMPLES	430 - 4111	400

SHALLOW GAS	
DEPTH INTERVAL m KB	REMARKS
501	



WELL HISTORY - 35/3-5

GENERAL :

Well 35/3-5 was drilled by "West Venture". The primary target was sandstones of Early Cretaceous age which had been found hydrocarbon bearing in the 35/3-2 and 35/3-4 wells (see Well Data Summary Sheets Vol. 11 and 12). The well was considered a wildcat due to the uncertain correlation between sandbodies in the area. The secondary objective was to penetrate sandstones of Middle-Early Jurassic age which had been found hydrocarbon bearing in 35/3-2. The well was plugged and abandoned as a dry hole.

OPERATIONS :

Well 35/3-5 was spudded 22.12.81. The well was respudded two times due to boulders. Shallow gas caused problems with cementing and caused a leak outside of the casing. The leak was repaired and further operations were performed without any specific problems.

TESTING :

The well was not tested.

GEOLOGICAL TOPS

WELL: 35/3-5

	Depth m (RKB)
Nordland Group	294,5 m
Hordaland Group	593 m
Rogaland Group	975 m
Balder Fm	975 m
Sele/Lista Fm	1026 m
Shetland Group	1400 m
"Cromer Knoll Group"	3219 m
Jurassic sediments	3684 m
Basement	4092 m
	<u>TD = 4114 m</u>