

Well no : 15/12-04

Operator : STATOIL

Coordinates	: 58 03 09.16 N 01 54 11.61 E	UTM coord.	: 6435232 N
		UTM zone 31	: 435264 E
Licence no	: 038	Permit no	: 433
Rig	: DEEPSEA BERGEN	Rig type	: SEMI-SUB.
Contractor	: ODFJELL DRILLING AND CONSULTING COMPANY A/S		
Bottom hole temperature	: 114 deg.C	Elev. KB	: 23 M
Spud date	: 84.09.13	Water depth	: 87 M
Compl. date	: 84.10.31	Total depth	: 3157 M
Spud class.	: WILDCAT	Age at TD	: TRIASSIC ?
Compl. class.	: P&A. OIL DISCOVERY		
Seis. loc.	: ST 8315/106 SP. 2105		

LICENSEES

 50.000 ESSO NORGE A/S
 50.000 DEN NORSKE STATS OLJESELSKAP A.S

CASING AND LEAK-OFF TESTS

Type	Casing diam.	Depth below KB	Hole diam.	Hole depth below KB	Lot mud eqv. g/cm ³
-----	-----	-----	-----	-----	-----
CONDUCTOR	30	171.0	36	173.0	
SURF. COND.	20	505.0	26	520.0	1.44
INTERM.	13 3/8	1601.0	17 1/2	1620.0	1.84
INTERM.	9 5/8	2666.0	12 1/4	2680.0	1.86
OPEN HOLE			8 1/2	3179.0	

CONVENTIONAL CORES

Core no.	Intervals cored meters	Recovery		Series
		M	%	
1	2439.0 - 2450.0	10.0	90.0	PALEOCENE
2	2494.5 - 2499.0	4.4	97.0	UPPER CRETACEOUS
3	2499.0 - 2513.5	14.5	99.9	UPPER CRETACEOUS
4	2902.0 - 2920.5	18.5	96.0	UPPER JURASSIC

MUD PROPERTIES

Depth below KB meter	Mud weighth g/cm3	Funnel viscosity s/qt	Mud type
110.0	1.03	55.0	WATER BASED
171.0	1.07	49.0	WATER BASED
520.0	1.08	46.0	WATER BASED
523.0	1.11	40.0	WATER BASED
772.0	1.14	42.0	WATER BASED
2374.0	1.20	44.0	WATER BASED
2439.0	1.25	45.0	WATER BASED
2584.0	1.30	42.0	WATER BASED
2803.0	1.35	55.0	WATER BASED

DRILL STEM TEST

NO DST'S WERE PERFORMED IN THIS WELL

DRILL BIT CUTTINGS AND WET SAMPLES

SAMPLE TYPE	INTERVAL BELOW KB	NUMBER OF SAMPLES
CUTTINGS	180 - 3157.5	560
WET SAMPLES	180 - 3157.5	500

SHALLOW GAS

INTERVAL BELOW KB	REMARKS
----------------------	---------

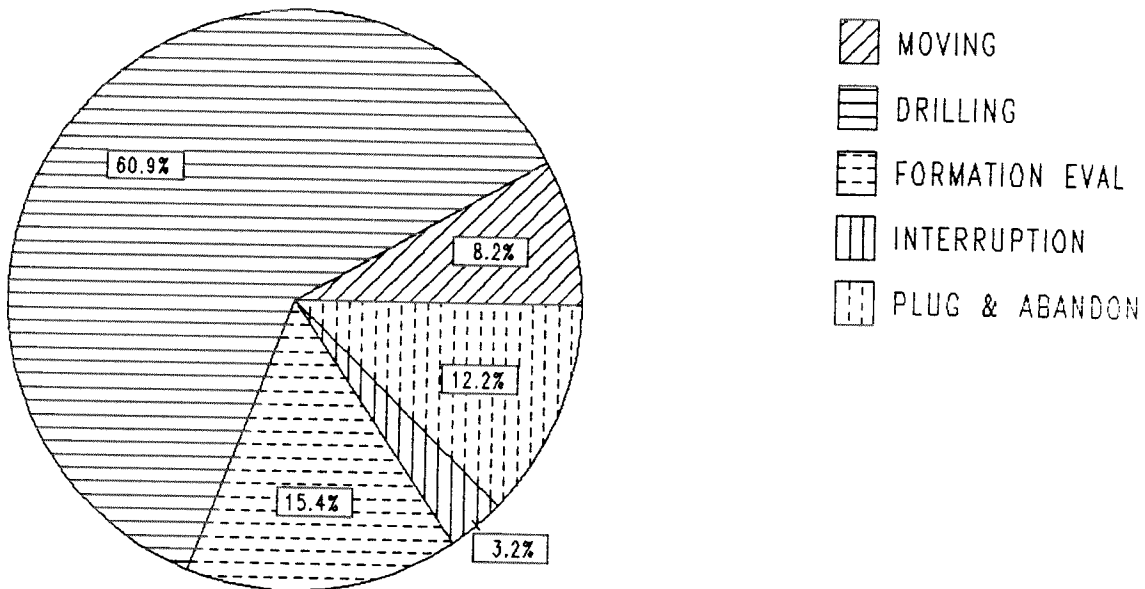
NONE

AVAILABLE LOGS

LOG TYPE	INTERVAL	1/200	1/500
DIFL BHC AC GR	170 - 520	X	
DIFL BHC AC	504 - 1622	X	
DIFL BHC AC	1599 - 2682	X	
DIFL BHC AC	2660 - 3158	X	
DIFL BHC AC	170 - 3158		X
CDL	504 - 1604	X	X
CDL CNL	1598 - 2682	X	X
CDL CNL	2660 - 3157	X	X
DLL MLL	2400 - 2682	X	X
DLL MLL	2880 - 2990	X	X
CDM	2200 - 2682	X	
CDM	2660 - 3157	X	
CDM AP	2200 - 2682	X	X
CDM AP	2660 - 3157	X	X
STRATADIP	2200 - 2682	1:40	
FMT	2439 - 2483		X
FMT	2901 - 2914		X
CBL VDL	300 - 1599	X	
CBL VDL	1396 - 2660	X	
DRILLING DATA PRESSURE	110 - 2157	1:5000	
MUD	175 - 3157		X
VELOCITY	171 - 3158		X
(+ Synthetic Seismogram, Marine, 10 cm/s,		1 stk)	
(+ Synthetic Seismogram, Marine, 20 cm/s,		1 stk)	
(+ Synthetic Seismogram, 10 cm/s,		2 stk)	
(+ Synthetic Seismogram, 20 cm/s,		2 stk)	
(+ Two Way Travel Time, 10 cm/s, 20 cm/s,		2 stk)	

DAILY DRILLING REPORT SYSTEM

Main operation : 15/12-04



Total : 1272.00 HRS

Main operation	Minutes	Hours	% of total
MOVING	6270	104.50	8.2
DRILLING	46500	775.00	60.9
FORMATION EVAL	11760	196.00	15.4
INTERRUPTION	2460	41.00	3.2
PLUG & ABANDON	9330	155.50	12.2

MAIN OPERATION: MOVING

Sub operations	Min	% of total
TRANSIT	1940	30.94
ANCHOR	4330	69.06
TOTAL	6270	100.00

MAIN OPERATION: DRILLING

Sub operations	Min	% of total
CASING	6450	13.87
TRIP	10710	23.03
WAIT	30	0.06
DRILL	19140	41.16
CIRC/COND	2640	5.68
SURVEY	1350	2.90
REAM	1350	2.90
OTHER	630	1.35
BOP/WELLHEAD EQ	1590	3.42
UNDERREAM	990	2.13
PRESS DETECTION	210	0.45
BOP ACTIVITIES	1410	3.03
TOTAL	46500	100.00

MAIN OPERATION: FORMATION EVAL

Sub operations	Min	% of total
LOG	5640	47.96
CORE	3510	29.85
CIRC/COND	540	4.59
CIRC SAMPLES	210	1.79
TRIP	1260	10.71
RFT/FIT	600	5.10
TOTAL	11760	100.00

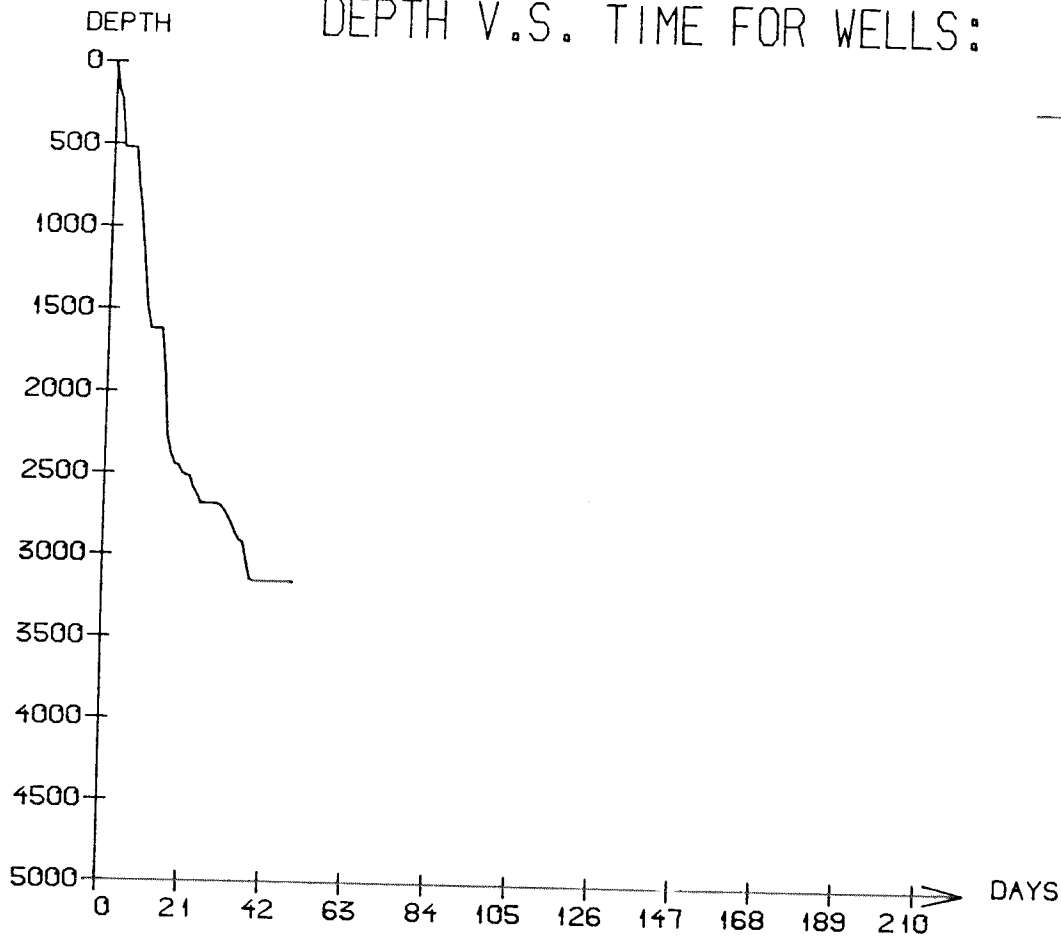
MAIN OPERATION: INTERRUPTION

Sub operations	Min	% of total
MAINTAIN/REP	1590	64.63
OTHER	360	14.63
WAIT	510	20.73
TOTAL	2460	100.00

MAIN OPERATION: PLUG & ABANDON

Sub operations	Min	% of total
TRIP	3270	35.05
CIRC/COND	360	3.86
CEMENT PLUG	1200	12.86
MECHANICAL PLUG	690	7.40
PERFORATE	450	4.82
SQUEEZE	60	0.64
EQUIP RECOVERY	630	6.75
CUT	2100	22.51
OTHER	570	6.11
TOTAL	9330	100.00

DEPTH V.S. TIME FOR WELLS:



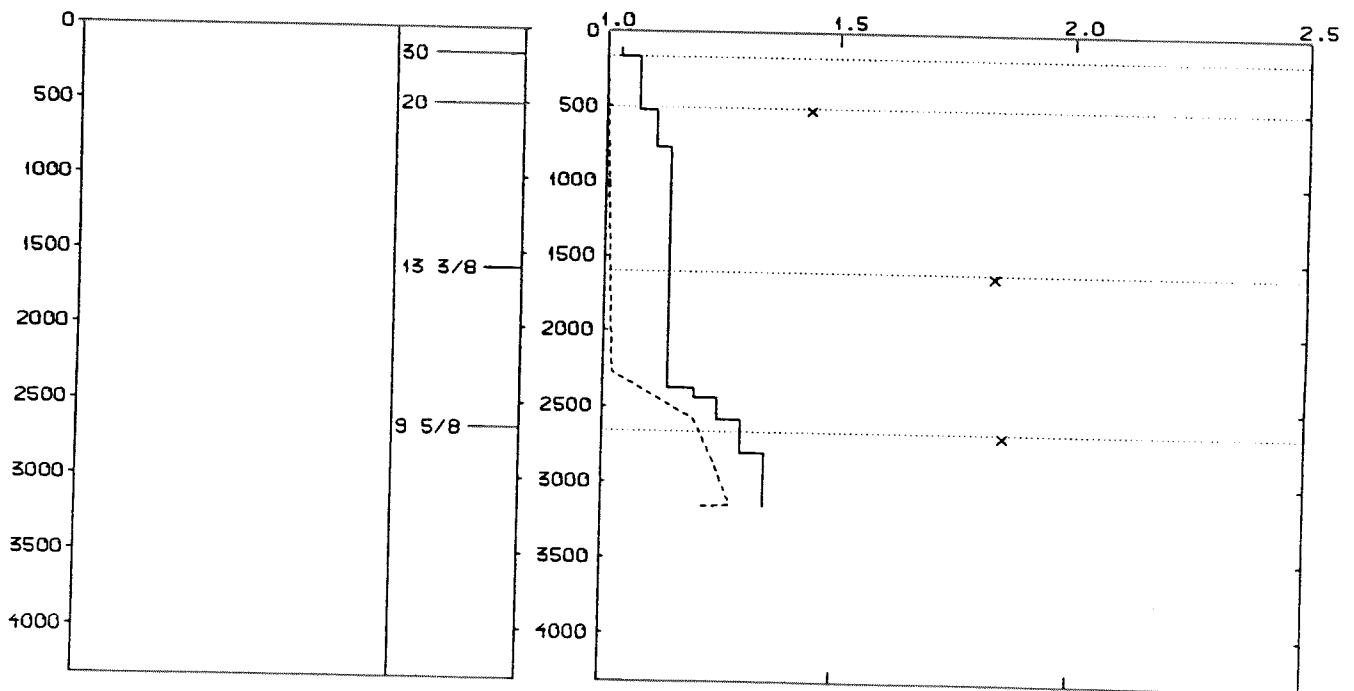
WELL: 001512 04 PRESSURE COMPOSITE PLOT

DEPTH
(RKB)
(METERS)

CASING

PRESSURE GRADIENTS
(g/ccm)

— MUDWEIGHT (REPORT)
- - - PORE PRESSURE (REPORT)
x LEAK-OFF (REPORT)



WELL HISTORY - 15/12-4

GENERAL:

The primary objectives of the wildcat 15/12-4 were the Paleocene Heimdal Formation and sandstones of Jurassic and Triassic age. Secondary objectives were the Frigg Formation and fractured limestones in Cretaceous. Oil was found in Jurassic/Triassic sandstones.

OPERATIONS:

The well was spudded 13.09.84 by the semi-submersible rig Deepsea Bergen. Four cores were cut, one in the Paleocene, two in the Upper Cretaceous and one in the Upper Jurassic sequence. No major problems occurred during drilling. The well was drilled using water based mud.

TESTING:

15/12-4 was not tested.

GEOLOGICAL TOPS

WELL: 15/12-04

Depth m (RKB)

<i>Nordland Group</i>	110.000
<i>Utsira Fm</i>	1200.000
<i>Hordaland Group</i>	1300.000
<i>Rogaland Group</i>	2320.000
<i>Balder Fm</i>	2320.000
<i>Sele Fm</i>	2335.000
<i>Lista Fm</i>	2394.000
<i>Maureen Fm</i>	2464.000
<i>Shetland Group</i>	2482.000
<i>Tor Fm</i>	2482.000
<i>Hod Fm</i>	2621.000
<i>Cromer Knoll Group</i>	2712.000
<i>Rødby Fm</i>	2712.000
<i>Sola Fm</i>	2735.000
<i>Åsgard Fm</i>	2760.000
<i>Viking Group</i>	2784.000
<i>Draupne Fm</i>	2784.000
<i>Heather Fm</i>	2892.000
<i>Vestland Group</i>	2912.000
<i>Ula Fm</i>	2912.000
<i>TD =</i>	3179.000