

Well no : 6407/ 6-01

Operator : STATOIL

Coordinates	: 64 38 29.62 N 07 52 31.53 E	UTM coord.	: 7169163 N
		UTM zone 32	: 446258 E
Licence no	: 092	Permit no	: 437
Rig	: ZAPATA UGLAND	Rig type	: SEMI-SUB.
Contractor	: UGLAND ZAPATA OFFSHORE		
Bottom hole temperature	: 93 deg.C	Elev. KB	: 27 M
Spud date	: 84.09.16	Water depth	: 227 M
Compl. date	: 84.10.26	Total depth	: 2895 M
Spud class.	: WILDCAT	Age at TD	: TRIASSIC
Compl. class.	: P&A. DRY HOLE		
Seis. loc.	: 627423 SP. 337		

LICENSEES

10.000	BRITOIL NORGE A/S
40.000	MOBIL EXPLORATION NORWAY INC.
50.000	DEN NORSKE STATS OLJESELSKAP A.S

CASING AND LEAK-OFF TESTS

Type	Casing diam.	Depth below KB	Hole diam.	Hole depth below KB	Lot mud eqv. g/cm ³
-----	-----	-----	-----	-----	-----
CONDUCTOR	30	314.0	36	316.0	
SURF.COND.	20	456.0	26	463.0	1.30
INTERM.	13 3/8	1334.0	17 1/2	1349.0	1.75
INTERM.	9 5/8	1873.0	12 1/4	1888.0	1.68
OPEN HOLE			8 1/2	2895.0	

CONVENTIONAL CORES

Core no.	Intervals cored meters	Recovery		Series
		M	%	
1	1870.0 - 1877.7	6.2	80.0	MIDDLE JURASSIC
2	1877.7 - 1886.4	8.0	92.0	MIDDLE JURASSIC
3	1887.1 - 1887.6	0.4	92.0	MIDDLE JURASSIC
4	1887.7 - 1888.2	0.5	99.9	MIDDLE JURASSIC

MUD PROPERTIES

Depth below KB meter	Mud weigh g/cm ³	Plastic viscosity mPa.s	Mud type
954.0	1.14		WATER BASED
1233.0	1.25	13.0	WATER BASED
1347.0	1.28	19.0	WATER BASED
1352.0	1.34	28.0	WATER BASED
1600.0	1.43	24.0	WATER BASED
1880.0	1.10	11.0	WATER BASED

DRILL STEM TEST

 NO DST'S WERE PERFORMED IN THIS WELL

DRILL BIT CUTTINGS AND WET SAMPLES

SAMPLE TYPE	INTERVAL BELOW KB	NUMBER OF SAMPLES
CUTTINGS	320 - 2895	440
WET SAMPLES	320 - 2892	396

SHALLOW GAS

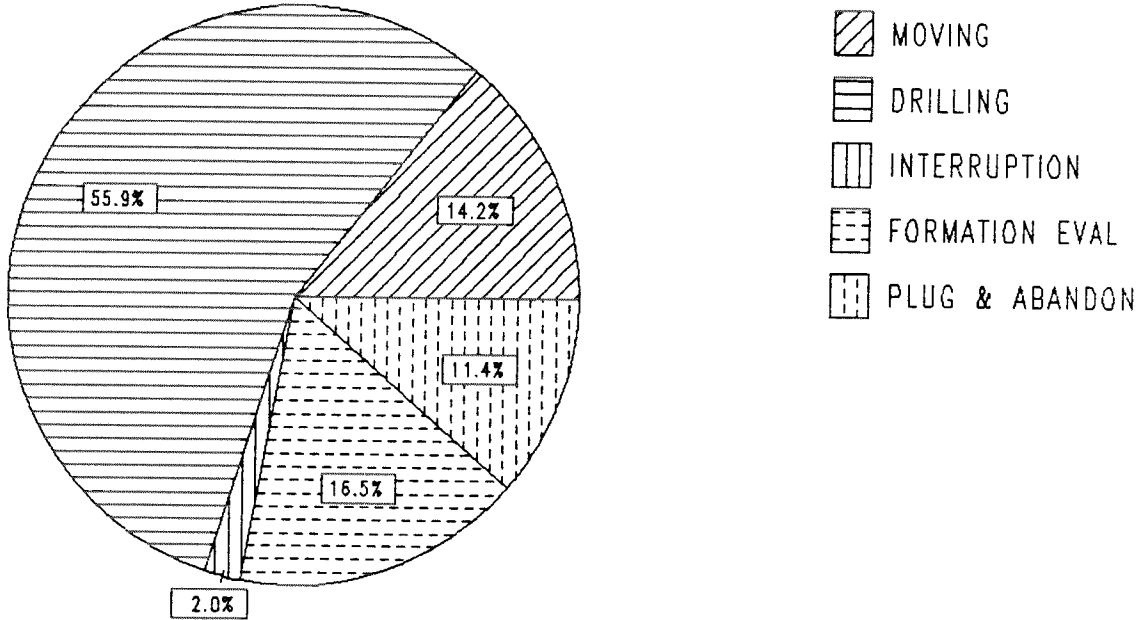
INTERVAL BELOW KB	REMARKS
490-492 M	
333 M	POSSIBLE SHALLOW GAS
433 M	POSSIBLE SHALLOW GAS

AVAILABLE LOGS

LOG TYPE	INTERVALS	1/200	1/500
ISF LSS MSFL GR	253 - 457	X	X
ISF LSS MSFL	457 - 1348	X	X
ISF LSS MSFL	1334 - 1887	X	X
ISF LSS MSFL NGT	2801 - 2868	X	X
ISF BHC MSFL NGT	1872 - 2867	X	X
LDL	314 - 458	X	
LDL CNL	457 - 1349	X	
LDL CNL	1334 - 1888	X	
LDL CNL	1872 - 2863	X	
LDL CNL	253 - 2867		X
CDM AP	1872 - 2864	X	X
SHDT	1570 - 1889	X	
SHDT	1872 - 2864	X	
NGT PLAYBACKS	2801 - 2865	X	X
NGT PLAYBACKS	1872 - 2867	X	X
RFT	1858 - 1872		1:100
CBL VDL CCL	253 - 1334	X	
CBL VDL	253 - 1873	X	
VELOCITY	253 - 2867		X
(+ Seismic VSP,	1063 - 2863		1 stk)

DAILY DRILLING REPORT SYSTEM

Main operation : 6407/06-01



Total : 1128.00 HRS

Main operation	Minutes	Hours	% of total
MOVING	9630	160.50	14.2
DRILLING	37800	630.00	55.8
INTERRUPTION	1380	23.00	2.0
FORMATION EVAL	11160	186.00	16.4
PLUG & ABANDON	7710	128.50	11.3

MAIN OPERATION: MOVING

Sub operations	Min	% of total
TRANSIT	6060	62.93
ANCHOR	3570	37.07
TOTAL	9630	100.00

MAIN OPERATION: DRILLING

Sub operations	Min	% of total
TRIP	6957	18.40
DRILL	12600	33.33
SURVEY	480	1.27
CASING	8010	21.19
REAM	1140	3.02
CIRC/COND	2040	5.40
BOP/WELLHEAD EQ	4653	12.31
UNDERREAM	960	2.54
BOP ACTIVITIES	960	2.54
TOTAL	37800	100.00

MAIN OPERATION: INTERRUPTION

Sub operations	Min	% of total
OTHER	30	2.17
MAINTAIN/REP	600	43.48
WAIT	750	54.35
TOTAL	1380	100.00

MAIN OPERATION: FORMATION EVAL

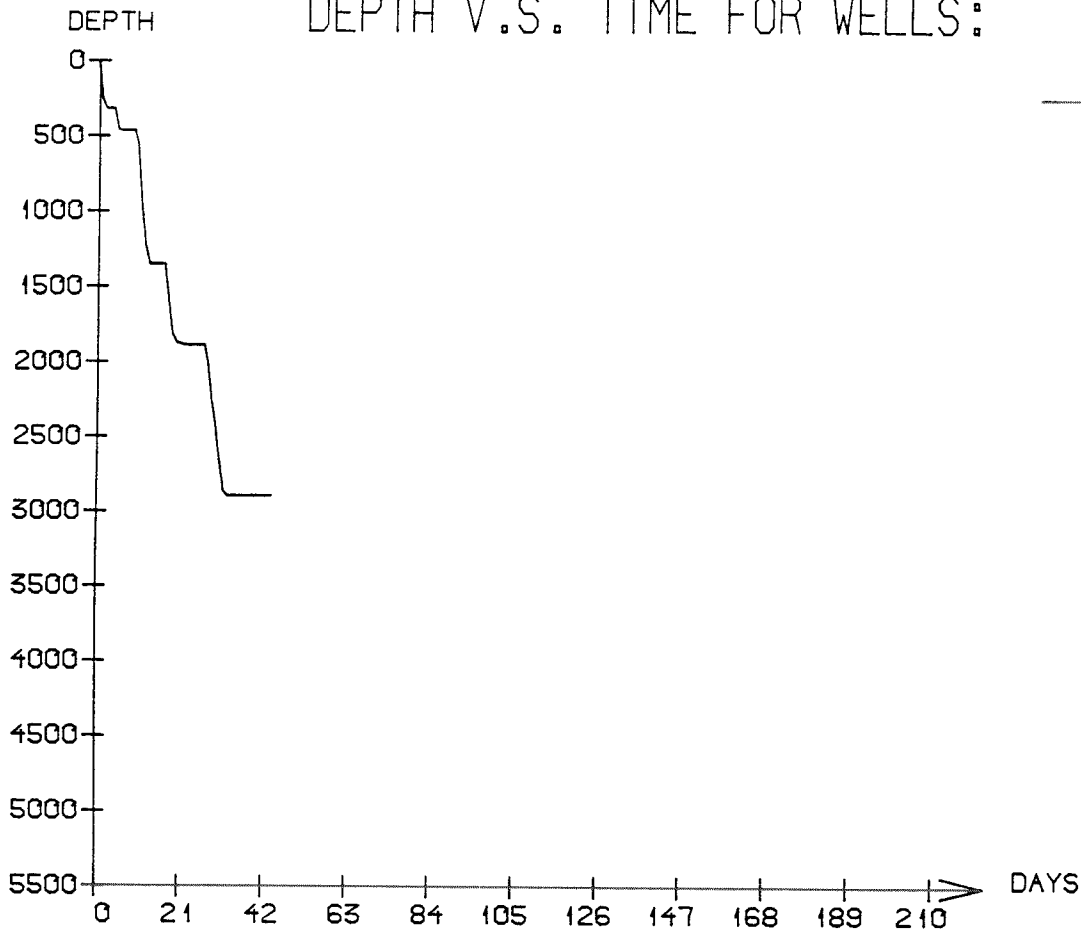
Sub operations	Min	% of total
LOG	5760	51.61
TRIP	1770	15.86
CIRC/COND	90	0.81
CORE	3540	31.72
TOTAL	11160	100.00

MAIN OPERATION: PLUG & ABANDON

Sub operations	Min	% of total
TRIP	3150	40.86
CIRC/COND	870	11.28
CEMENT PLUG	720	9.34
MECHANICAL PLUG	330	4.28
CUT	630	8.17
EQUIP RECOVERY	1560	20.23
PERFORATE	450	5.84
TOTAL	7710	100.00

DEPTH V.S. TIME FOR WELLS:

— 6407/06- 01



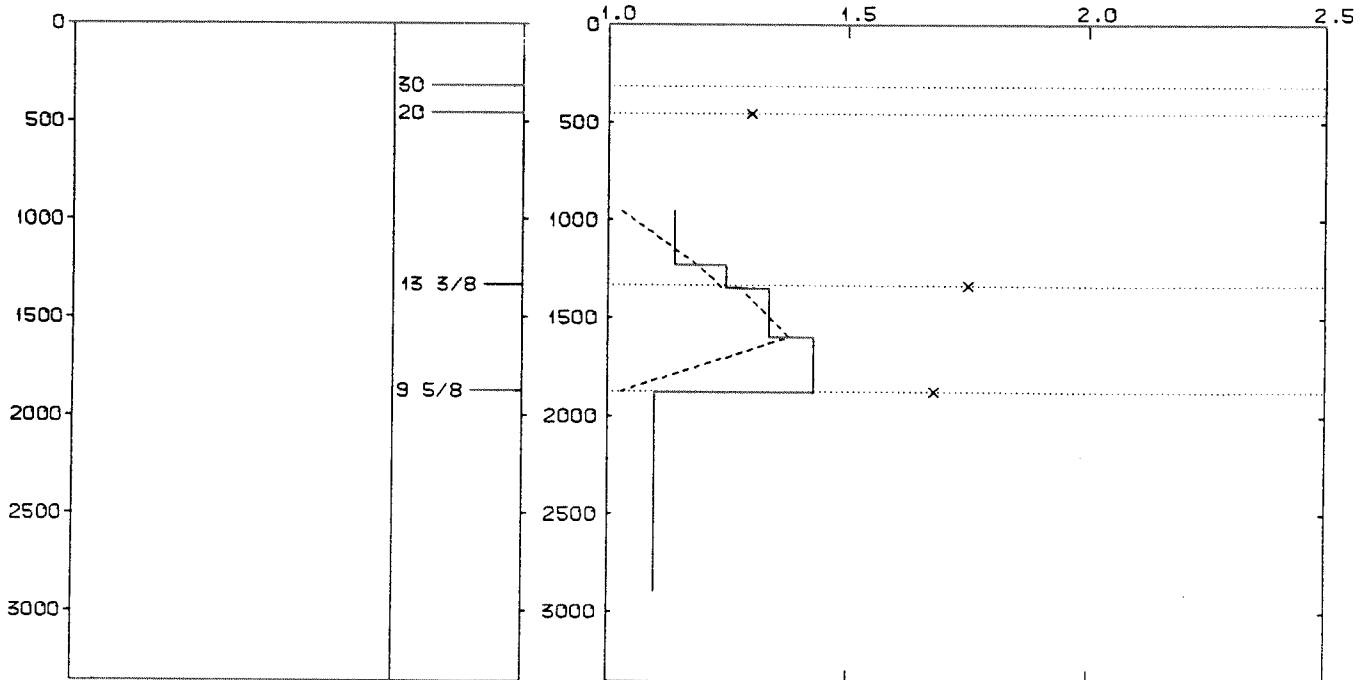
WELL: 640706 01 PRESSURE COMPOSITE PLOT

DEPTH
(RKB)
(METERS)

CASING

PRESSURE GRADIENTS
(g/ccm)

— MUDWEIGHT (REPORT)
- - - PORE PRESSURE (REPORT)
x LEAK-OFF (REPORT)



WELL HISTORY - 6407/6-1

GENERAL:

The wildcat 6407/6-1 was designed to test the hydrocarbon potential and to increase the geological knowledge of the area. The primary targets were Middle to Upper Jurassic sandstones. Secondary targets were Middle to Lower Jurassic sandstones, and sandstones within the coal beds and the Triassic. No hydrocarbons were encountered by this well.

OPERATIONS:

The well was spudded 16.09.84 by the semi-submersible rig Zapata Uglund. Four cores were cut in the Middle Jurassic sandstone. Tight spots were experienced in the 26" hole. In the 12 1/4" hole section the hole suddenly packed off at 1591 m, the pipe was worked free. The well was drilled using water based mud.

TESTING:

The well was not tested.

GEOLOGICAL TOPS

WELL: 6407/ 6-01

	<i>Depth m (RKB)</i>
<i>Nordland Group</i>	<i>253.000</i>
<i>Naust Fm</i>	<i>426.000</i>
<i>Kai Fm</i>	<i>1063.000</i>
<i>Hordaland Group</i>	<i>1384.000</i>
<i>Brygge Fm</i>	<i>1384.000</i>
<i>Rogaland Group</i>	<i>1611.000</i>
<i>Tare Fm</i>	<i>1611.000</i>
<i>Tang Fm</i>	<i>1673.000</i>
<i>Shetland Group</i>	<i>1745.000</i>
<i>Cromer Knoll Group</i>	<i>1816.500</i>
<i>Viking Group</i>	<i>1834.000</i>
<i>Spekk Fm</i>	<i>1834.000</i>
<i>Melke Fm</i>	<i>1842.500</i>
<i>Fangst Group</i>	<i>1855.500</i>
<i>Garn Fm</i>	<i>1855.500</i>
<i>Not Fm</i>	<i>1986.000</i>
<i>Ile Fm</i>	<i>2018.500</i>
<i>Båt Group</i>	<i>2091.000</i>
<i>Ror Fm</i>	<i>2091.000</i>
<i>Tilje Fm</i>	<i>2244.000</i>
<i>Åre Fm</i>	<i>2457.000</i>
<i>Triassic</i>	<i>2848.000</i>
<i>"Red Beds" Fm</i>	<i>2848.000</i>
 <i>TD =</i>	 <i>2895.000</i>