

Well no : 7/12-02 R

Operator : BP

Coordinates : 57 06 41.34 N  
02 50 50.73 EUTM coord. : 6329948 N  
UTM zone 31 490758 E

Licence no : 019

Permit no : 161

Rig : DYVI ALPHA

Rig type : SEMI-SUB.

Contractor : DYVI OFFSHORE A/S

Bottom hole temperature :

Elev. KB : 25 M

Spud date : 84.03.24

Water depth : 71 M

Compl. date : 84.04.29

Total depth : 3676 M

Spud class. : WILDCAT

Age at TD : TRIASSIC

Compl. class. : P&amp;A. OIL DISCOVERY

Seis. loc. : CN7-20

## LICENSEES

57.500 BP PETR. DEV. OF NORWAY A/S  
 10.000 CONOCO NORWAY INC.  
 5.000 A/S PELICAN & CO KS  
 12.500 DEN NORSKE STATS OLJESELSKAP A.S  
 15.000 SVENSKA PETROLEUM EXPLORATION A/S

## CASING AND LEAK-OFF TESTS

Type	Casing diam.	Depth below KB	Hole diam.	Hole depth below KB	Lot mud eqv. g/cm <sup>3</sup>
CONDUCTOR	30	158.5	36	160.0	
SURF.COND.	20	480.5	26	495.0	
INTERM.	13 3/8	1517.0	17 1/2	1536.0	
INTERM.	9 5/8	3094.0	12 1/4	3115.0	
LINER	7	3675.0	8 1/2	3676.0	

## CONVENTIONAL CORES

Core no.	Intervals cored meters	Recovery		Series
		M	%	
1	3385.5 - 3404.0	18.3	99.0	UPPER JURASSIC
2	3404.0 - 3414.0	10.0	100.0	UPPER JURASSIC
3	3414.0 - 3417.5	3.5	100.0	UPPER JURASSIC
4	3417.5 - 3421.7	3.4	80.0	UPPER JURASSIC
5	3421.7 - 3430.0	7.8	94.0	UPPER JURASSIC
6	3430.0 - 3439.1	8.5	93.0	UPPER JURASSIC
7	3439.1 - 3440.3	1.1	92.0	UPPER JURASSIC
8	3440.3 - 3449.5	9.2	100.0	UPPER JURASSIC
9	3449.5 - 3458.6	9.1	100.0	UPPER JURASSIC
10	3458.6 - 3476.9	18.3	100.0	UPPER JURASSIC
11	3634.1 - 3652.4	18.3	100.0	TRIASSIC

## MUD PROPERTIES

Depth below KB meter	Mud weigh g/cm <sup>3</sup>	Funnel viscosity s/qt	Mud type
520.0	1.26	42.0	WATER BASED
1000.0	1.27	60.0	WATER BASED
1280.0	1.32	44.0	WATER BASED
1420.0	1.36	70.0	WATER BASED
1585.0	1.38	60.0	WATER BASED
1775.0	1.50	70.0	WATER BASED
1900.0	1.48	88.0	WATER BASED
1950.0	1.51	82.0	WATER BASED
2150.0	1.52	70.0	WATER BASED
2450.0	1.53	63.0	WATER BASED
3180.0	1.57	52.0	WATER BASED
3300.0	1.63	60.0	WATER BASED

## DRILL STEM TEST

---

### INTERVALS AND PRESSURES

Test no.	Interval meter	Choke size	Pressure (PSI)		
			WHFP	BTHP	FFP
1.0*	3421.0 - 3411.0	12.7	3030.0	6939.0	
1.1*	3439.7 - 3427.5				

### RECOVERY

Test no.	Oil Sm <sup>3</sup> /d	Gas M Sm <sup>3</sup> /d	Oil grav. g/cm <sup>3</sup>	Gas grav. rel. air	GOR m <sup>3</sup> /m <sup>3</sup>
1.0*	1478		0.840	0.795	50
1.1*					

\* - BOTH INTERVALS WERE TESTED AT THE SAME TIME

## DRILL BIT CUTTINGS AND WET SAMPLES

SAMPLE TYPE	INTERVAL BELOW KB	NUMBER OF SAMPLES
CUTTINGS	166 - 3676	1600
WET SAMPLES	166 - 3676	1600

## SHALLOW GAS

INTERVAL  
BELOW KB

REMARKS

-----  
NONE

## AVAILABLE LOGS

LOG TYPE

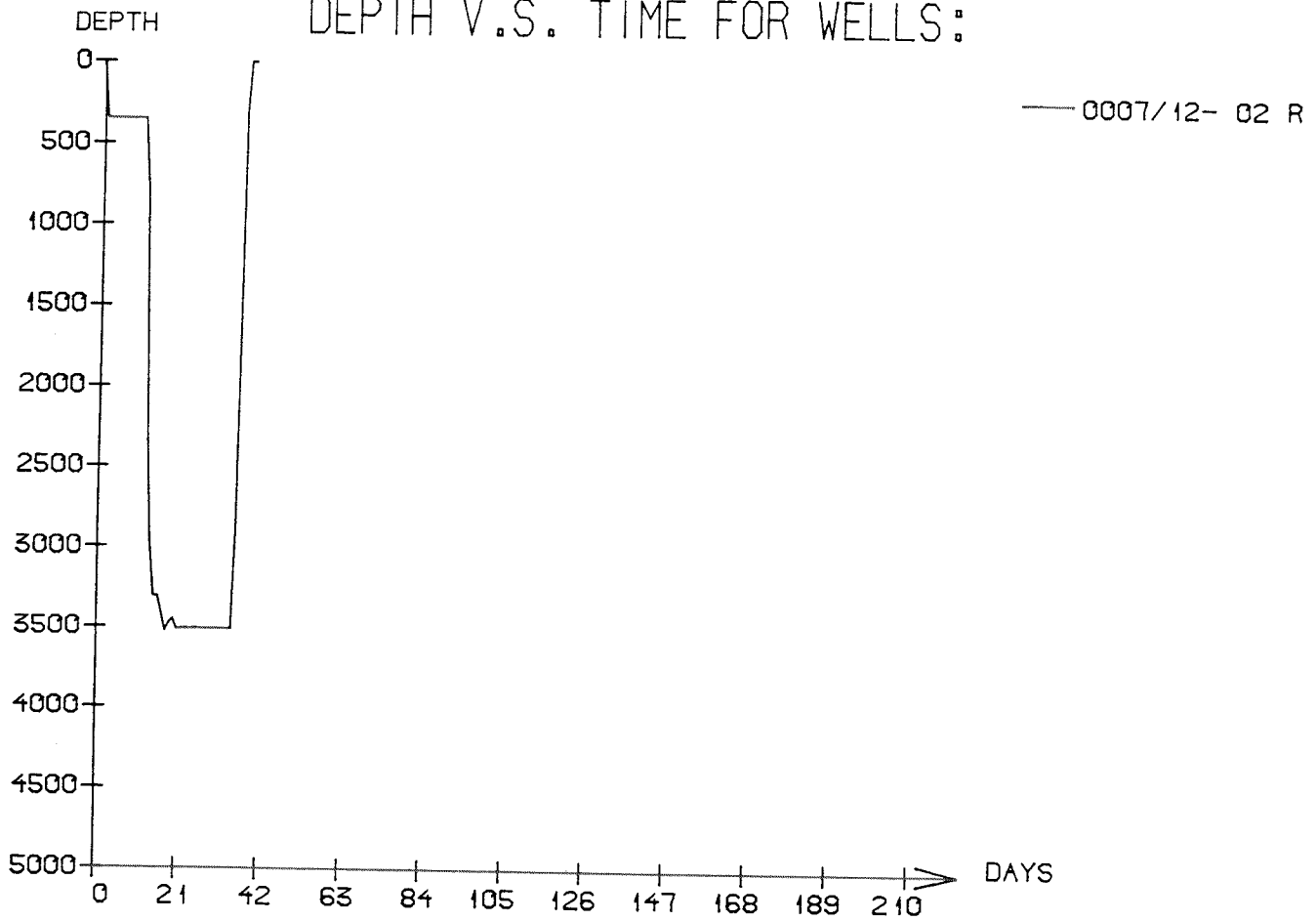
INTERVALS

1/200

1/500  
-----

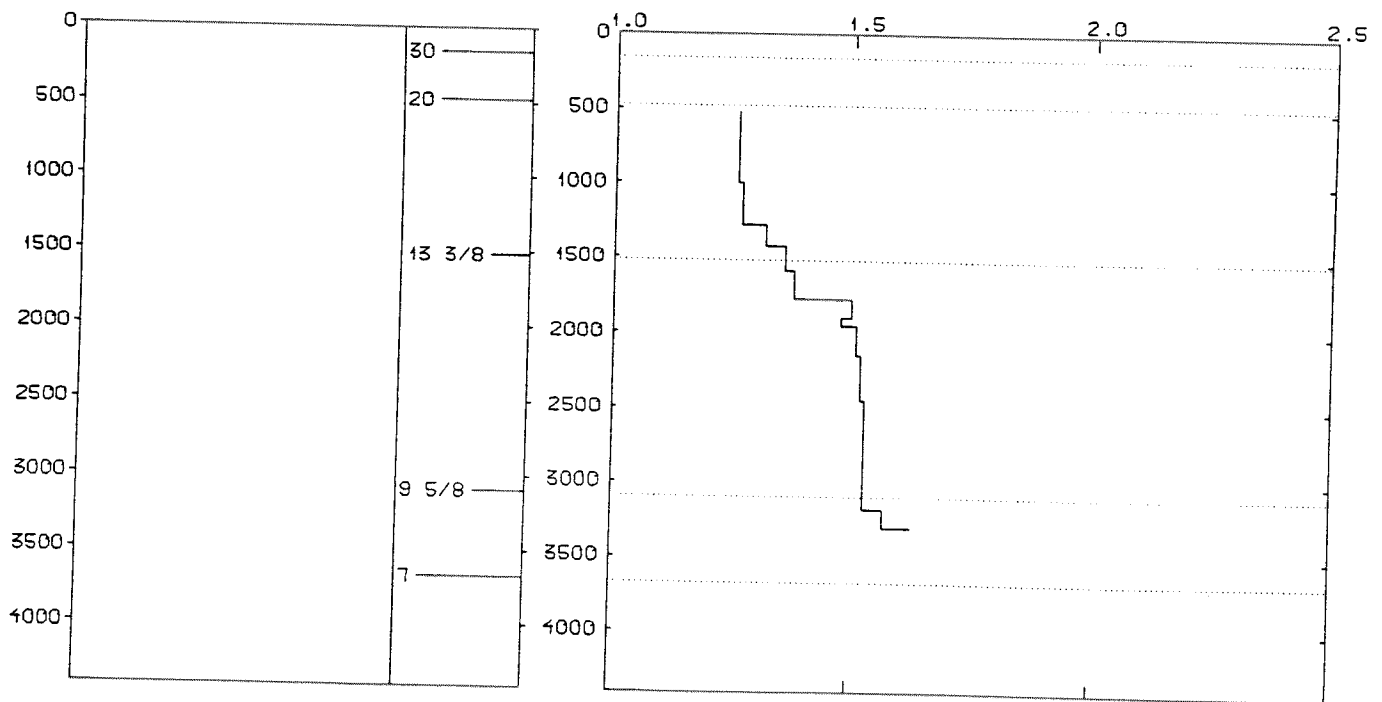
NO LOGS WERE RUN IN THE WELL 7/12-2 R

# DEPTH V.S. TIME FOR WELLS:



## WELL: 000712 02R PRESSURE COMPOSITE PLOT

DEPTH (RKB) (METERS) CASING PRESSURE GRADIENTS (g/ccm) MUDWEIGHT (REPORT)



## WELL HISTORY - 7/12-2 R

### GENERAL:

The wildcat 7/12-2 was drilled in 1976, see WDSS vol.7. The well penetrated a major Upper Jurassic oil bearing reservoir, the Ula reservoir. The Ula field was declared commercial in 1979. The re-entry 7/12-2 R was a workover. The objective of the workover was to establish the suitability of using 7/12-2 as a producer on the Ula field.

### OPERATIONS:

The wildcat 7/12-2 R was re-entered 24.03.84 by the semi-submersible rig Dyvi Alpha. The well was not drilled deeper than 7/12-2.

### TESTING:

One drill stem test was performed in the well 7/12-2 R. The objective of the test was to confirm that 7/12-2 had the necessary productivity to be an early oil producer on the Ula field.