

WELL NO: 6506/12-3

OPERATOR: STATOIL
LICENSE NO: 094

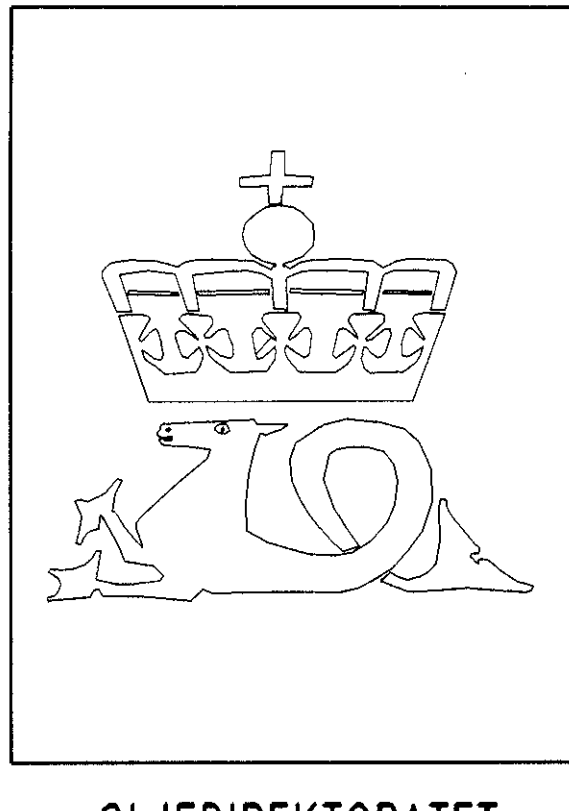
TOTAL DEPTH: 4360 M RKB
KBE: 22 M
WATER DEPTH: 307 M

COORDINATES: 65°01'31.09"N/06°53'27.35"E
DATUM: ED50
SPUD CLASSIF.: WILDCAT
COMPL. CLASSIF.: P&A. OIL/GAS DISC.

SPUD DATE: 85.03.02
COMPL. DATE: 85.07.17
RIG: ROSS ISLE

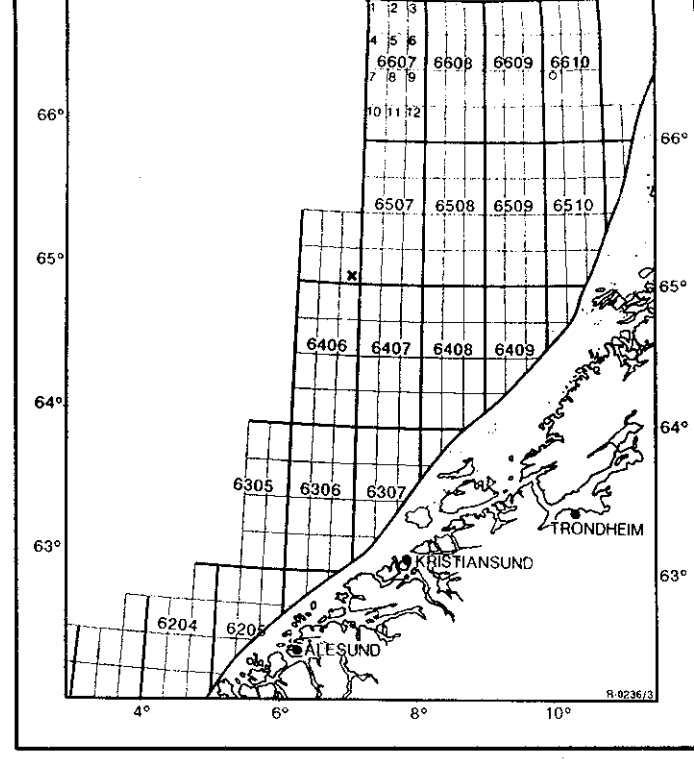
LICENSE GROUP:

NORSK AGIP A/S	10.000 %
ARCO NORGE A/S	10.000 %
NORSK HYDRO PRODUKSJON A.S	5.000 %
MOBIL EXPLORATION NORWAY INC.	15.000 %
DEN NORSKE STATS OLJESELSKAP A.S	50.000 %
TENNECO OIL NORWAY A/S	10.000 %



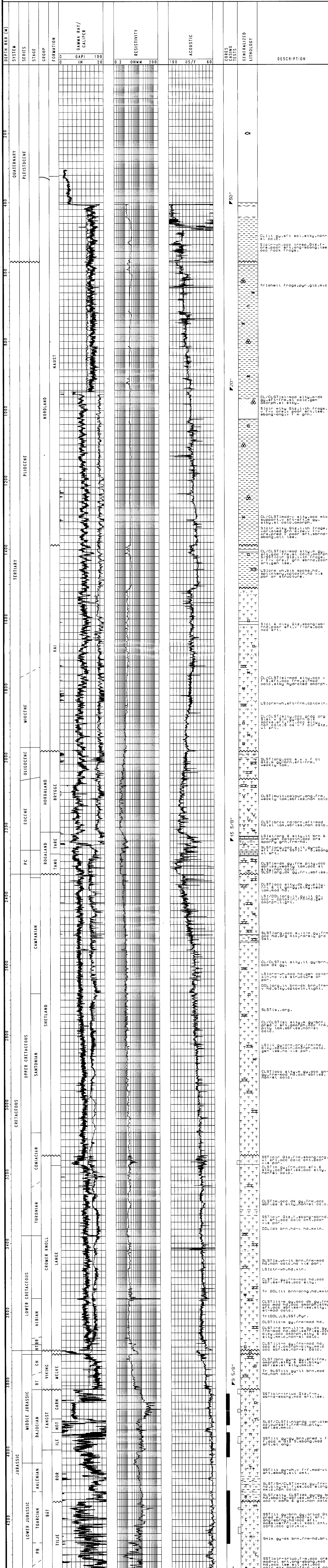
OLJEDIREKTORATET

LOCATION MAP



COMPLETION LOG

scale 1: 4000



20"

20"

20"

20"

20"

20"

20"

20"