

Well no : 2/ 2-01 Operator : SAGA

Coordinates : 56 47 15.69 N UTM coord. : 6294074 N
 03 38 15.62 E 538959 E

Licence no : 066 Permit no : 320

Rig : DYVI ALPHA

Contractor : DYVI OFFSHORE A/S

Bottom hole temperature : 127 deg.C Elev. KB : 25 M

Spud. date : 82.04.09 Water depth : 59 M

Compl. date : 82.07.03 Total depth : 4003 M

Spud. class : WILDCAT Form. at TD : PERMIAN

Compl. class : P&A. OIL/GAS DISC. Prod. form :

Seisloca : SG 8052 - 210 SP 165

LICENSEES

 5,000 ARCO NORWAY INC.
 10,000 NORSK HYDRO PRODUKSJON A.S
 25,000 MOBIL DEVELOPMENT NORWAY A/S
 10,000 SAGA PETROLEUM A.S
 50,000 DEN NORSKE STATS OLJESELSKAP A.S

CASING AND LEAK-OFF TESTS

Type	Casing diam.	Depth below KB	Hole diam.	Hole depth below KB	Lot mud eqv. g/cm
-----	-----	-----	-----	-----	-----
CONDUCTOR	30	207,0	36	207,0	
SURF.COND.	20	655,0	26	665,0	1,57
INTERM.	13 3/8	1707,0	17 1/2	1715,0	1,80
INTERM.	9 5/8	3243,0	12 1/4	3260,0	1,87
LINER	7	3903,0	8 1/2	4003,0	

CONVENTIONAL CORES

Core no.	Intervals cored meters	Recovery		Series
		M	%	
-----	-----	-----	-----	-----
1	3355.8 - 3365.3	9.2	96.8	L.JURASSIC
2	3712.0 - 3714.0	1.7	85.0	L.JURASSIC
3	3714.0 - 3726.0	11.3	94.2	L.JURASSIC
4	3726.0 - 3737.0	10.5	95.5	L.JURASSIC

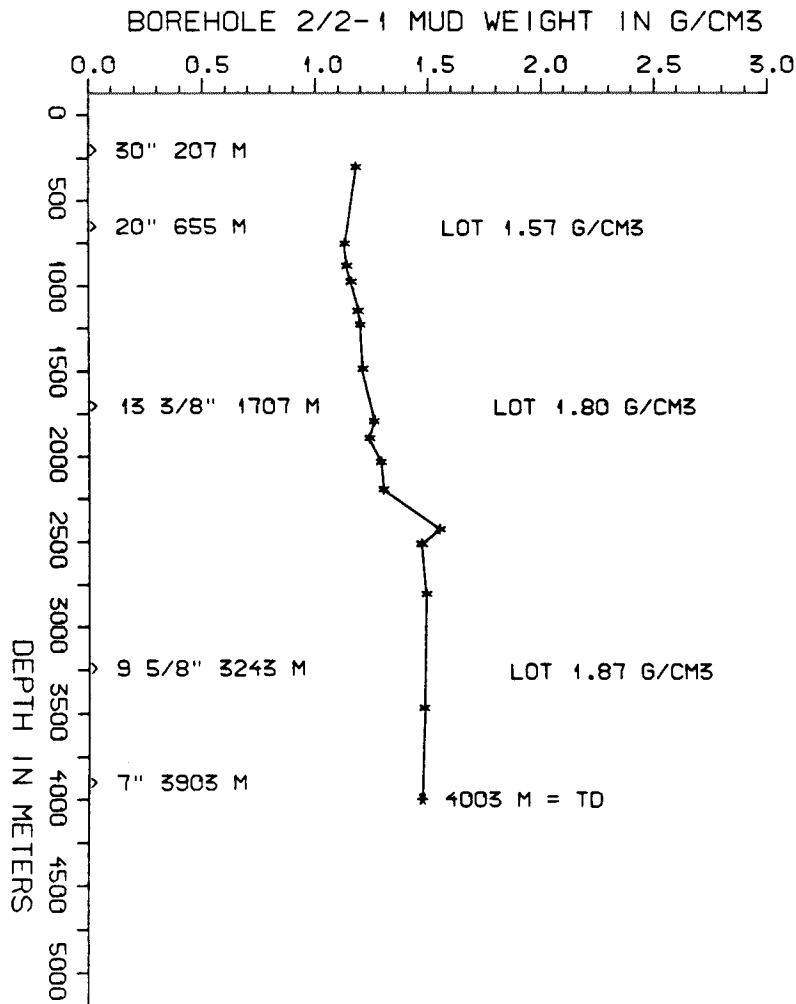
DRILL STEM TEST									
TEST NO	DEPTH BELOW KB	CHOKE SIZE mm	RECOVERY					PRESS. (psi)	
			OIL Sm3 /d	GAS M Sm3 /d	OIL GRAV. g/cm3	GAS GRAV. rel. air	GOR m3/m3	BHP	WHP
			1	3715 - 3730	11.1	191.7	8934		

AVAILABLE LOGS			
LOG TYPE	INTERVALS	1/200	1/500
ISF DDBHC GR	202 - 663	x	x
ISF DDBHC GR	655 - 1715	x	x
ISF DDBHC GR MSFL-NGS	1707 - 2339	x	x
ISF DDBHC	2340 - 3264	x	x
ISF DDBHC	3245 - 3744	x	x
ISF DDBHC	3700 - 3992	x	x
LDT GR	655 - 1716	x	x
LDT CNL	1707 - 2340	x	x
LDT CNL	2340 - 3264	x	x
LDT CNL	3245 - 3744	x	x
LDT CNL	3700 - 3990	x	x
DLL MSFL	1970 - 2275	x	x
DLL MSFL	3671 - 3986	x	x
NGS GR	1707 - 2339	x	
NGS COMPUTATION	3245 - 3982	x	
NGS CALIPER	3245 - 3982	x	
CBL VDL GR	1650 - 3245	x	
CBL VDL GR	3100 - 3813	x	
4-ARMS CALIPER	1707 - 3265		x
4-ARMS CALIPER	3245 - 3983		x
CDM	2050 - 2225	x	
CDM	3245 - 3983	x	
CDM AP	3246 - 3983	x	x
RFT	1707 - 2340	x	
RFT	655 - 2340	x	
RFT	3720 - 3724	x	
MUD	90 - 4003		x
VELOCITY	209 - 3989	1:1000	x
(+ 4stk.Synth.Seismo. 2stk. W-T 2stk. B-P)			
(+ 1stk.WSP Surface Sensor S1 Reverse pol.)			
(+ 1stk.WSP Filtered Stacks Reverse pol.)			

MUD PROPERTIES			
DEPTH BELOW KB m	WEIGHT g/cm3	FUNNEL VISC. sec	FILTRATE LOSS cm3
240	1.15		
690	1.10		
820	1.11		
910	1.13		
1080	1.16		
1160	1.17		
1420	1.18		
1730	1.23		
1830	1.21		
1970	1.26		
2130	1.27		
2360	1.52		
2450	1.44		
2740	1.46		
3400	1.45		
4003	1.45		

DRILL BIT CUTTINGS AND WET SAMPLES		
SAMPLE TYPE	INTERVAL BELOW KB	NUMBER OF SAMPLES
CUTTINGS	220 - 3995	560
WET SAMPLES	230 - 3992	752

SHALLOW GAS	
DEPTH INTERVAL m KB	REMARKS
	NONE



WELL HISTORY - 2/2-1

GENERAL :

Well 2/2-1 was a wildcat drilled on a saltinduced domal structure in the SE corner of block 2/2. The main target was an Late Jurassic sandstone. Secondary targets were pre-Cretaceous sandstones, the Late Cretaceous Chalk and a sandstone of Oligocene age. The well was terminated in Permian salt. Oil was proven in Jurassic sands and gas was encountered in the Oligocene sandstone.

OPERATIONS :

"Dyvi Alpha" spudded the well 09.04.82. When drilling the 36" section pipe stuck at 167 m due to a rotary table failure. The well had to be respudded 11.04.82. 40 BBL's of mud was lost to the formation when drilling the 17 1/2" pilot hole in the 26" section. The well was then drilled to TD without any serious problems apart from various tight spots.

TESTING :

The Jurassic sandstone was flowed initially for 13 minutes before being shut in for 142 minutes. The final flow lasted for 1320 minutes and the final build up lasted approx. 1830 minutes.

GEOLOGICAL TOPS

WELL: 2/2-1

	Depth m (RKB)
Nordland Group	84 m
Hordaland Group	1392 m
Rogaland Group	2658 m
Balder Fm	2658 m
Sele Fm	2678 m
Lista Fm	2730 m
Montrose Group	2782 m
Maureen Fm	2782 m
Chalk Group	2815 m
Tor Fm	2815 m
Hod Fm	3128 m
Cromer Knoll Group	3225 m
Valhall Fm	3225 m
Tyne Group	3314 m
Mandal Fm	3314 m
Farsund Fm	3321 m
Vestland Group	3357 m
Ula Fm	3357 m
Sleipner Fm	3752 m
Triassic Group	3820 m
Skagerrak Fm	3820 m
Smith Bank Fm	3868 m
Zechstein Group	3947 m

TD = 4003 m