

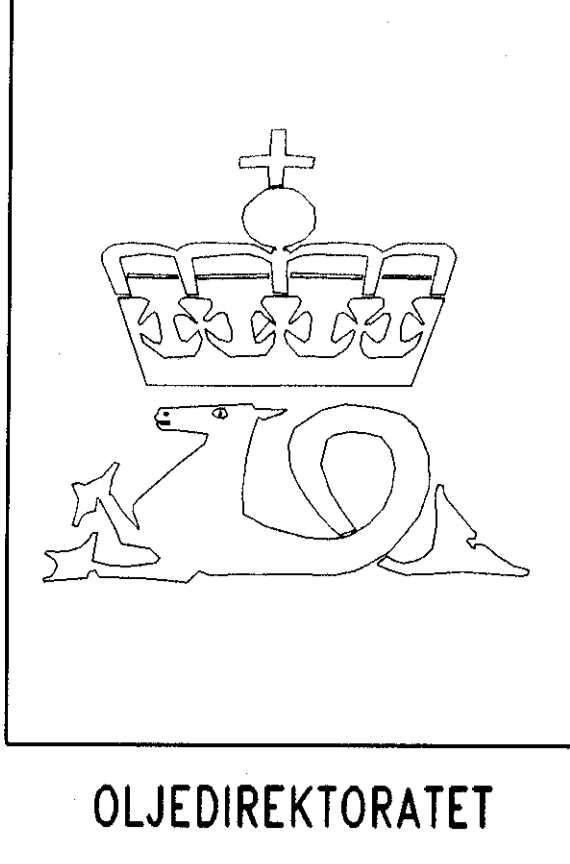
WELL NO: 6407/4-1

OPERATOR: STATOIL

LICENSE NO: 106

TOTAL DEPTH: 4835 M RKB
KBE: 22 M
WATER DEPTH: 225 M

COORDINATES: 64°35'45.36"N/07°08'42.17"E
DATUM: ED50
SPUD CLASSIF.: WILDCAT
COMPL. CLASSIF.: P&A. GAS/COND. DISC.

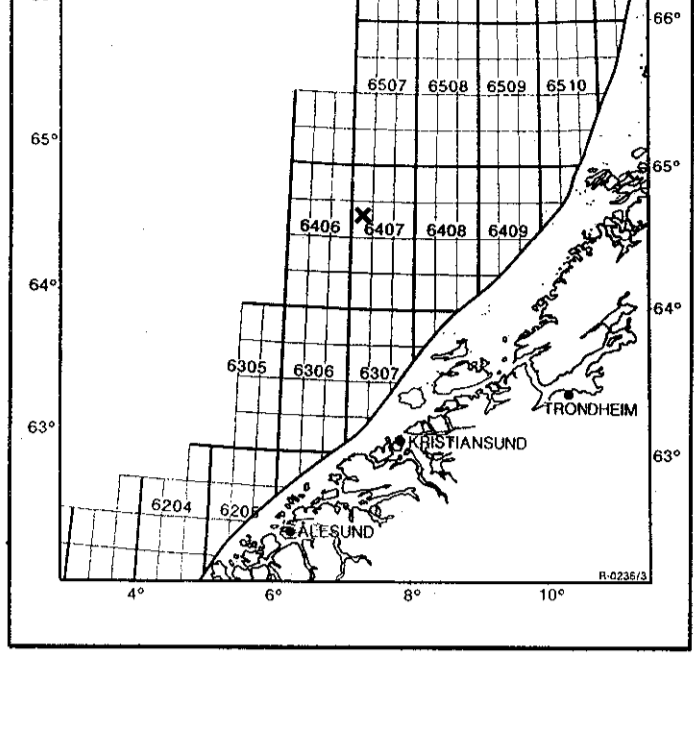


OLJEDIREKTORATET

SPUD DATE: 85.07.20
COMPL. DATE: 85.11.15
RIG: ROSS ISLE

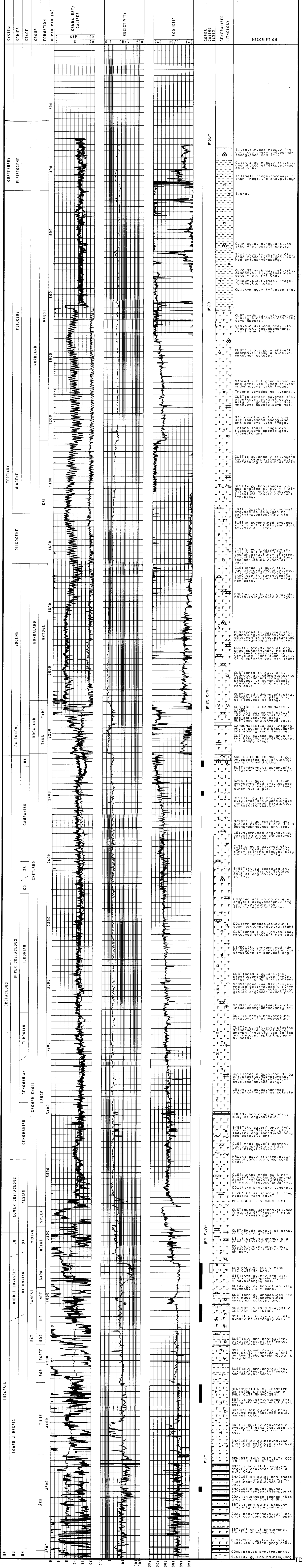
LICENSE GROUP:
NORSKE CONOCO A/S 20.000 %
ELF AQUITAINE NORGE A/S 20.000 %
SAGA PETROLEUM A.S. 10.000 %
DEN NORSKE STATS OLJESELSKAP A.S 50.000 %

LOCATION MAP

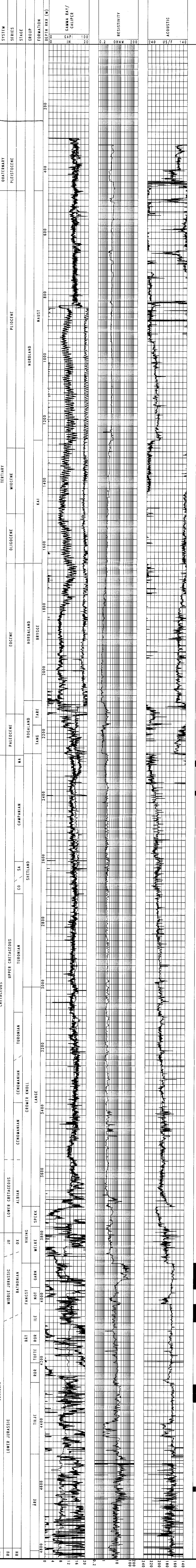


COMPLETION LOG

scale 1: 4000



SYSTEM SERIES STAGE GROUP FORMATION DEPTH (RKB) (M) GAMMA RAY/ CALIPER RESISTIVITY ACOUSTIC CORES TESTING GENERALIZED LITHOLOGY DESCRIPTION



750' 70' 65' 60' 55' 50' 45' 40' 35' 30' 25' 20' 15' 10' 5' 0' 100 200 240 US/F 140