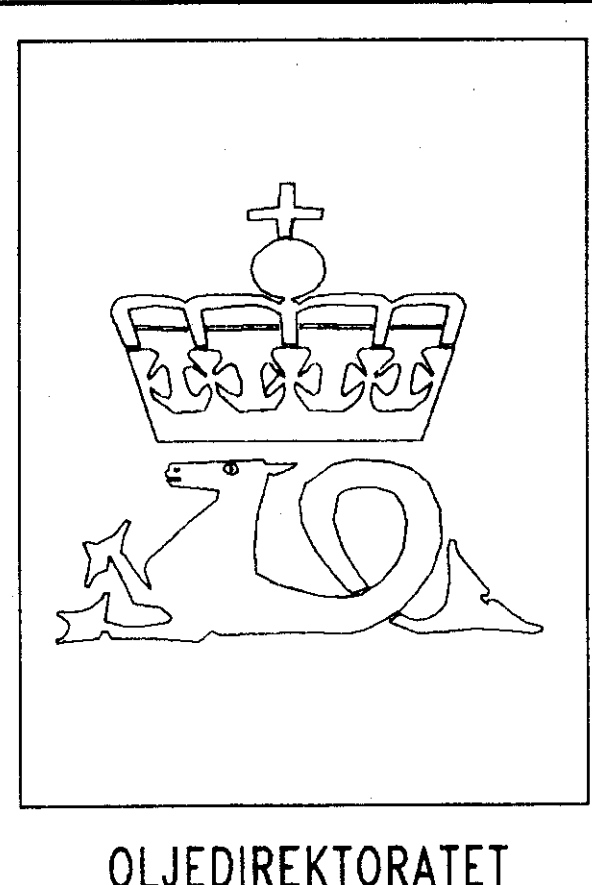


WELL NO: 15/3-5
OPERATOR: ELF AQUITAINE NORGE A/S
LICENSE NO: 025

TOTAL DEPTH: 4130 M RKB
KBE: 25 M
WATER DEPTH: 103 M

COORDINATES: 58°47'13.04"N/01°50'34.11"E
DATUM: ED50
SPUD CLASSIF.: WILDCAT
COMPL. CLASSIF.: P&A. OIL DISCOVERY



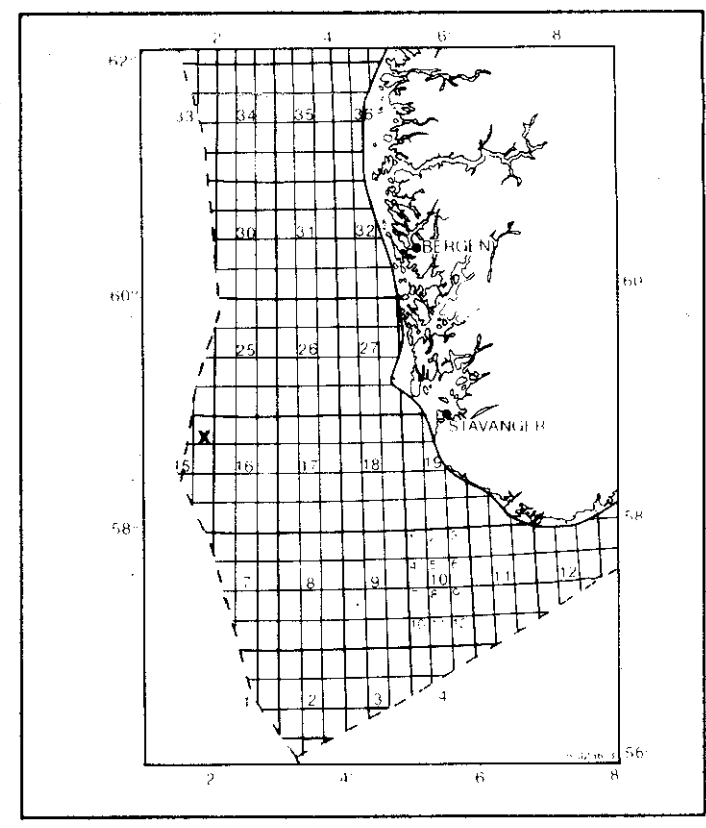
OLJEDIREKTORATET

SPUD DATE: 83.12.28
COMPL. DATE: 84.05.13
RIG: BYFORD DOLPHIN

LICENSE GROUP:

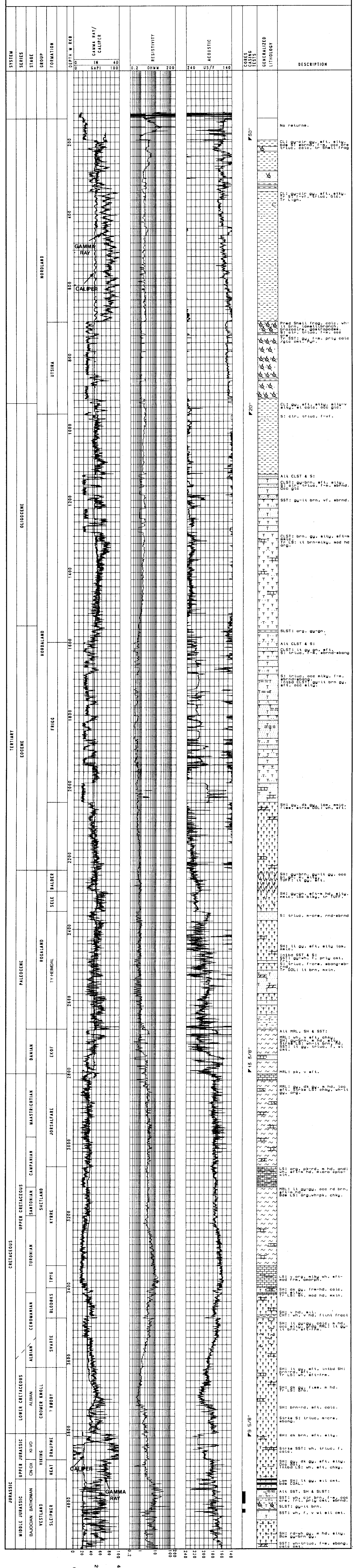
ELF AQUITAINE NORGE A/S	53.200 %
NORSK HYDRO PRODUKSJON A.S	10.000 %
LASMO NORGE A/S	15.000 %
TOTAL MARINE NORSK A/S	21.800 %

LOCATION MAP



COMPLETION LOG

scale 1: 4000



CORES CASING TESTS	GENERALIZED LITHOLOGY	DESCRIPTION
		No returns.
		Cl: gy, oir, gu, aft, sly, bpe, srt, sbrn, f-triuc, calc, fr Shell frag
		Cl: gy, oir, gu, aft, sly, fr, sgn.
		Prod Shell frag, calc, wh, lt brn, lowell, bronch, brooding, gastropods, s: oir, triuc, f-m, oca
		Fr SST: gu, f-m, prty calc, calc ont, fur.
		Cl: gu, aft, sly, sly-v, sly-v, calc, oca, glo.
		S: ctn, triuc, f-vf.
		All CLST & S:
		CLST: gu-brn, aft, sly, srt, sbrn, f-triuc, f-m, sbrnd, oca glo
		SST: gu-lt brn, vf, sbrnd.
		Cl: brn, gu, sly, aft-m, sbrn, hd.
		S: lt brn-sly, mod hd, org.
		SLSST: org, gu-gn.
		All CLST & S:
		CLST: lt gu, aft, sly, srt, triuc, f-m, sbrnd, sbrng
		S: triuc, oca mky, f-m, sbrnd-sbrng.
		Fr SST: gu-lt brn, gu, aft, oca sly.
		SH: gu, dk, gu, loc, msc, f-m, sbrn, oca, wh, aft.
		SH: gu-brn, gu-lt gu, oca, f-m, sbrn, sly.
		SH: gu-gn, aft-m, hd, sly, msc, loc, blk, fr, fuff.
		S: triuc, m-ore, rnd-sbrnd
		SH: lt gu, aft, sly, lom, intbd SST, S:
		SST: gu-wh, f, prty ont.
		S: triuc, f-cr, sbrng-sbrn, fr OOL: lt brn, axin.
		All MRL, SH & SST:
		MRL: wh, v aft, chky, srt, sbrn, m hd, sly, sbrn, m CB: un-lt brn, Hd, ont: lt gu, triuc, f, wh, ont.
		MRL: px, v aft.
		MRL: gu, dk, gu, m hd, loc, oca, org.
		MRL: lt gu-gu, oca rd brn, sbrn, sly, arg, wh-pk, chky.
		LS: v org, sly, wh, aft, mod frm, sbrng.
		SH: dk gu, fr-hd, calc, oca sly, wh, mod hd, axin.
		SH: v hd, sly, CH: wh, v hd, flint fract
		SH: lt gu-gu, calc, m hd, oca sly, sbrn MRL: lt gu-lt brn, sly, fr m.
		SH: lt gu, aft, intbd SH: sbrn, sly, sbrn, fr LS: wh, srt-rm.
		SH: dk, sly, f-see, m hd, fr LS:
		SH: brn-rd, aft, calc.
		Strike S: triuc, m-ore, sbrng.
		SH: dk brn, aft, sly.
		Strike SST: wh, triuc, f, calc.
		SH: gu, dk, gu, aft, sly, intbd LS: wh, aft, chky.
		Lom SH: lt gu, sly, ont, sbrn, sly.
		All SST, SH & SLSST:
		SST: wh, ctn, brn, f-m, oca, org, int, prty calc, sbrnd
		SLSST: gu-lt brn.
		SST: wh, f, v wt sly ont.
		SH: rd-wh, gu, m hd, sly, sbrn, sly, sbrn, sly.
		SST: wh-triuc, f-m, sbrng, calc ont.