

Well no : 6407/ 1-02

Operator : STATOIL

Coordinates	: 64 47 50.61 N 07 02 23.76 E	UTM coord.	: 7187495 N 406877 E
Licence no	: 073	Permit no	: 355
Rig	: DYVI DELTA	Rig type	: SEMI-SUB.
Contractor	: DYVI OFFSHORE A/S		
Bottom hole temperature	: 149 deg.C	Elev. KB	: 29 M
Spud. date	: 82.11.13	Water depth	: 273 M
Compl. date	: 83.05.15	Total depth	: 4560 M
Spud. class	: WILDCAT	Form. at TD	: TRIASSIC
Compl. class	: P&A. OIL/GAS DISC.	Prod. form	:
Seisloca	: 8110 - 427 SP 234		

LICENSEES

 20,000 AMOCO NORWAY OIL COMPANY
 20,000 CONOCO NORWAY INC.
 50,000 DEN NORSKE STATS OLJESELSKAP A.S
 10,000 NORSK HYDRO PRODUKSJON A.S

CASING AND LEAK-OFF TESTS

Type	Casing diam.	Depth below KB	Hole diam.	Hole depth below KB	Lot mud eqv. g/cm3
-----	-----	-----	-----	-----	-----
CONDUCTOR	30	400,0	36	401,0	
SURF. COND.	20	901,0	26	901,0	
INTERM.	13 3/8	1789,0	17 1/2	1817,0	1,88
INTERM.	9 5/8	3568,0	12 1/4	3568,0	2,03
LINER	7	3969,0	8 1/2	3969,0	1,88
OPEN HOLE			6	4560,0	

CONVENTIONAL CORES

Core no.	Intervals cored meters	Recovery		Series
		M	%	
-----	-----	-----	-----	-----
1	3661.0 - 3678.9	17.9	100.0	MIDDLE JURASSIC
2	3678.9 - 3688.5	9.5	99.0	MIDDLE JURASSIC
3	3688.5 - 3701.5	13.0	100.0	MIDDLE JURASSIC
4	3701.5 - 3719.5	18.0	100.0	MIDDLE JURASSIC

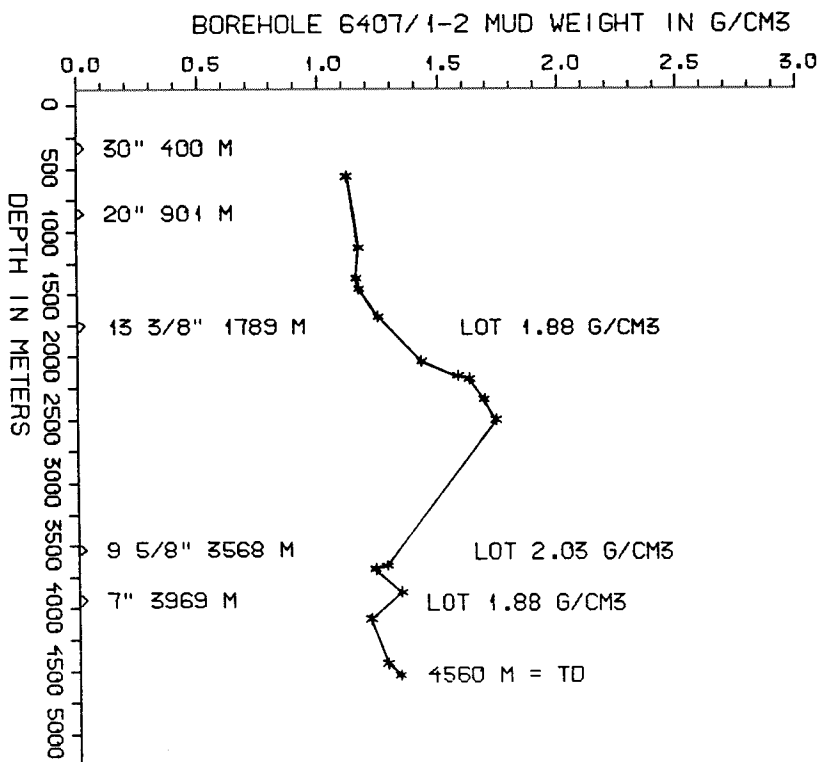
DRILL STEM TEST									
TEST NO	DEPTH BELOW KB	CHOKE SIZE mm	RECOVERY					PRESS. (psi)	
			OIL Sm ³ /d	GAS M Sm ³ /d	OIL GRAV. g/cm ³	GAS GRAV. rel. air	GOR m ³ /m ³	WHFP	BHFP
1	3659 - 3669	19.05	454	394	0.792	0.735	869		

AVAILABLE LOGS			
LOG TYPE	INTERVALS	1/200	1/500
ISF DDBHC MSFL GR	600 - 1815	X	
ISF DDBHC MSFL	1815 - 3566	X	
ISF DDBHC MSFL	3566 - 3696	X	
ISF DDBHC MSFL	3553 - 3969	X	
ISF DDBHC MSFL NGS	3970 - 4556	X	
ISF LSS MSFL	400 - 4558		X
LDL	660 - 1816	X	X
LDL CNL	1816 - 3567	X	X
LDL CNL	3567 - 3697	X	X
LDL CNL	3553 - 3968	X	X
LDL CNL	3970 - 4558	X	X
DLL	3553 - 3714	X	X
NGT	3553 - 3714	X	X
NGS	3970 - 4556	X	X
CDM	3553 - 3964	X	
CDM	3970 - 4558	X	
CDM AP	3655 - 3962	X	X
CDM AP	3971 - 4559	X	X
GEODIP	3654 - 3806	1:40	
GEODIP	3795 - 3963	1:40	
CBL VDL	300 - 1789	X	
CBL VDL	1589 - 3553	X	
CBL VDL	3380 - 3963	X	
RFT	3660 - 3952		
RFT	4102 - 4556	X	
MUD	300 - 4560		X
VELOCITY (SEISM. CALIBR.)	624 - 4558		X
(Synth. Seismogr., Geogram	713 - 4530		5 stk)
(VSP, plot 18-31			14 stk)
(Seismic Log, plot 1-17,			17 stk)

MUD PROPERTIES			
DEPTH BELOW KB m	WEIGHT g/cm ³	FUNNEL VISC. sec	FILTRATE LOSS cm ³
520	1.09	31	
1100	1.14	36	
1300	1.13	33	
1425	1.14	35	
1650	1.22	40	
1980	1.40	44	
2100	1.55	58	
2160	1.60	14	
2280	1.66	54	
2425	1.71	62	
3500	1.71	54	
3630	1.25	55	
3680	1.20	52	
3790	1.31	78	
4020	1.18	72	
4415	1.25	63	
4490	1.30	65	

DRILL BIT CUTTINGS AND WET SAMPLES		
SAMPLE TYPE	INTERVAL BELOW KB	NUMBER OF SAMPLES
CUTTINGS	400-4560	1100
WET SAMPLES	410-4560	1040

SHALLOW GAS	
DEPTH INTERVAL m KB	REMARKS
475	POSSIBLE SHALLOW GAS



WELL HISTORY - 6407/1-2

GENERAL:

The wildcat 6407/1-2 was drilled to test the Jurassic sands for hydrocarbon accumulations. The primary objective was Middle Jurassic sand horizons, with Lower Jurassic sands as a secondary objective. The Middle Jurassic sandstones were found hydrocarbon bearing. The NPD found this well interesting, as it was the first well north of 62° N to encounter oil.

OPERATIONS:

The well was spudded 13.11.82 by the semi-submersible rig Dyvi Delta. Four cores were cut in the Middle Jurassic sequence. At 1817 m a slight loss to the formation was discovered. A survey showed that this was caused by a collapse of 20" casing from approximately 667 m. It was therefore decided to run the 13 3/8" casing at this point. Drilling operations were suspended several times due to bad weather conditions, and time was also lost due to fishing operations. The well was drilled using waterbased mud.

TESTING:

One drill stem test was performed in this well. Gas and oil were produced. The test also produced 3% CO₂ and traces of H₂S.

GEOLOGICAL TOPS
WELL 6407/1-2

	Depth m (RKB)
Nordland Group	302,0
Naust Fm	302,0
Kai Fm	1419,0
Hordaland Group	1690,0
Brygge Fm	1690,0
Rogaland Group	2188,0
Tare Fm	2188,0
Tang Fm	2253,0
Shetland Group	2320,0
Cromer Knoll Group	3048,0
Viking Group	3526,0
Spekk Fm	3526,0
Melke Fm	3575,0
Fangst Group	3658,5
Garn Fm	3658,5
Not Fm	3770,0
Ile Fm	3815,0
Båt Group	3907,0
Ror Fm	3907,0
Tilje Fm	4050,0
Åre Fm	4220,0
TD =	4560,0