

Well no : 2/ 6-03 Operator : ELF

Coordinates : 56 31 49.32 N UTM coord. : 6265553 N
 03 49 25.38 E 550669 E

Licence no : 008 Permit no : 352

Rig : BYFORD DOLPHIN Rig type : SEMI-SUB.

Contractor : DOLPHIN SERVICES A/S

Bottom hole temperature : 116 deg.C Elev. KB : 25 M

Spud. date : 82.11.09 Water depth : 71 M

Compl. date : 83.02.25 Total depth : 4060 M

Spud. class : WILDCAT Form. at TD : PERMIAN

Compl. class : P&A. DRY HOLE Prod. form :

Seisloca : 980 401 SP 267

LICENSEES

1,596 COPAREX NORGE A/S
 2,000 DEN NORSKE STATS OLJESELSKAP A.S
 32,376 ELF AQUITAINE NORGE A/S
 1,824 EURAFREP NORGE A/S
 11,400 ØMV NORGE A/S
 5,220 NORSK AGIP A/S
 13,400 NORSK HYDRO PRODUKSJON A.S
 14,780 PHILLIPS PETROLEUM CO NORWAY
 16,188 TOTAL MARINE NORSK A/S
 1,216 COFRANORD A/S

CASING AND LEAK-OFF TESTS

Type	Casing diam.	Depth below KB	Hole diam.	Hole depth below KB	Lot mud eqv. g/cm ³
CONDUCTOR	30	155,0	36		
SURF.COND.	20	793,0	26	803	1,75
INTERM.	13 3/8	2494,0	17 1/2	2504	1,70
INTERM.	9 5/8	3435,0	12 1/4	3449	1,95
LINER	7	3910,0	8 1/2	4060	

CONVENTIONAL CORES

Core no.	Intervals cored meters	Recovery M	%	Series
1	3551.0 - 3560.0	7.8	86.7	UPPER JURASSIC
2	3886.0 - 3895.0	1.0	11.1	MIDDLE JURASSIC
3	4053.0 - 4060.0	3.9	55.7	BASEMENT

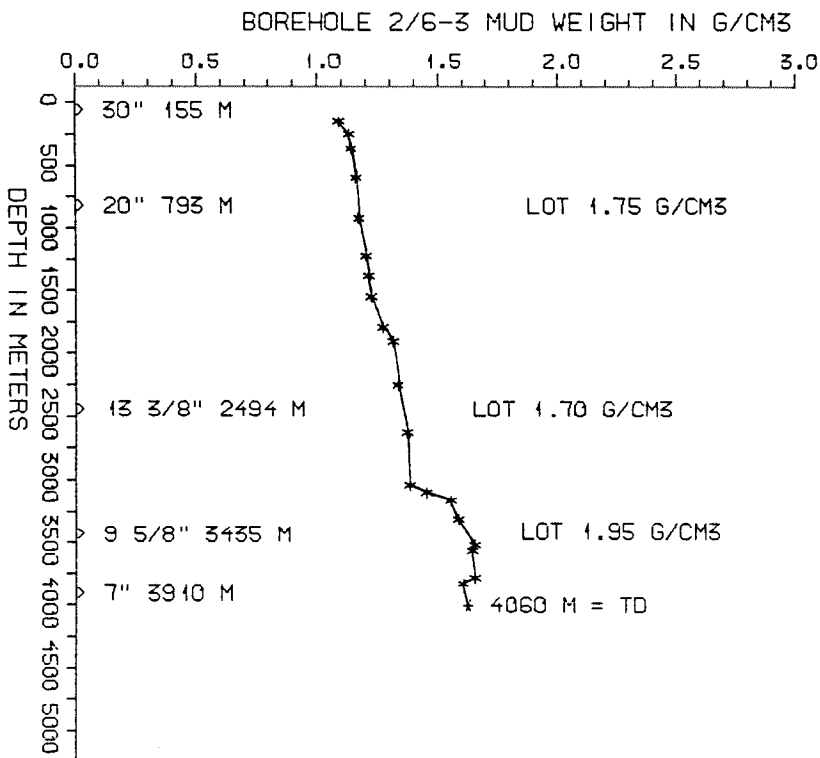
DRILL STEM TEST									
TEST NO	DEPTH BELOW KB	CHOKE SIZE mm	RECOVERY					PRESS. (psi)	
			OIL Sm ³ /d	GAS M Sm ³ /d	OIL GRAV. g/cm ³	GAS GRAV. rel. air	GOR m ³ /m ³	WHFP	BHFP
	NONE								

AVAILABLE LOGS			
LOG TYPE	INTERVALS	1/200	1/500
ISF DDBHC GR	158 - 769	X	X
ISF SLS	794 - 2500	X	X
ISF SLS	2497 - 3447	X	X
ISF LSS MSFL	3437 - 3768	X	X
ILSS	3768 - 4061	X	X
LDL	158 - 767	X	X
LDL	794 - 2501	X	X
LDL CNL	2497 - 3451	X	X
LDL CNL	3437 - 4062	X	X
CDM	2497 - 3451	X	
CDM	3437 - 4061	X	X
CDM AP	3437 - 4061		X
CST	2505 - 3443	X	
FMT	3437 - 3768		
NGS	3437 - 4052	X	
CBL VDL BI	91 - 2497	X	
CBL	2385 - 3436	X	
MUD	100 - 4100		X
VELOCITY	158 - 4061		X
(Synthetic Seismogram Marine, 5-10 cm/s,		2 stk)	

MUD PROPERTIES			
DEPTH BELOW KB m	WEIGHT g/cm3	FUNNEL VISC. sec	FILTRATE LOSS cm3
115	1.06	100	
185	1.10	50	
350	1.11	50	
535	1.13	53	
820	1.14	50	
1150	1.17	52	
1350	1.18	50	
1505	1.19	48	
1700	1.24	53	
1830	1.28	58	
2190	1.30	60	
2545	1.34	57	
2970	1.35	53	
3135	1.42	54	
3160	1.52	55	
3290	1.55	58	
3460	1.62	50	
3520	1.61	64	
3710	1.62	62	
3780	1.57	48	

DRILL BIT CUTTINGS AND WET SAMPLES		
SAMPLE TYPE	INTERVAL BELOW KB	NUMBER OF SAMPLES
CUTTINGS	180-4053	320
WET SAMPLES	180-4053	613

SHALLOW GAS	
DEPTH INTERVAL m KB	REMARKS
	NONE



WELL HISTORY - 2/6-3

GENERAL:

The wildcat 2/6-3 was drilled to test possible hydrocarbon accumulations in Upper and Middle Jurassic sandstones. The Middle Jurassic sandstones were the main target. Secondary target was the Upper Jurassic sandstones with Triassic sandstones as a third target. The well did not encounter the Upper Jurassic sandstones nor the assumed Rotliegendes reservoir or any Permian salt. Middle Jurassic sandstones were reached but these were waterbearing. The well was plugged and abandoned as a dry hole.

OPERATIONS:

The well was spudded 09.11.82 by the semi-submersible rig Byford Dolphin. Three cores were cut in this well. No major problems occurred during drilling of this well. The well was drilled with waterbased mud.

TESTING:

The well was not tested.

GEOLOGICAL TOPS
WELL 2/6-3

	Depth m (RKB)
Chalk Group	2929,0
Tyne Group	3391,0
Mandal Fm	3391,0
Farsund Fm	3462,5
Vestland Group	3545,0
Bryne Fm	3545,0
Triassic	3638,0
Smith Bank Fm	3638,0
TD=	4060,0