

Well no : 34/10-15 Operator : STATOIL

Coordinates : 61 10 30.06 N UTM coord. : 6782676 N
 02 14 44.57 E 459427 E

Licence no : 050 Permit no : 349

Rig : NORDRAUG

Contractor : GOLAR-NOR OFFSHORE A/S

Bottom hole temperature : 71 deg.C Elev. KB : 25 M

Spud. date : 82.10.16 Water depth : 164 M

Compl. date : 82.12.12 Total depth : 2400 M

Spud. class : WILDCAT Form. at TD : TRIASSIC

Compl. class : P&A. DRY HOLE Prod. form :

Seisloca : 3D - 223 SP 265

LICENSEES

 9,000 NORSK HYDRO PRODUKSJON A.S
 6,000 SAGA PETROLEUM A.S
 85,000 DEN NORSKE STATS OLJESELSKAP A.S

CASING AND LEAK-OFF TESTS

Type	Casing diam.	Depth below KB	Hole diam.	Hole depth below KB	Lot mud eqv. g/cm
CONDUCTOR	30	249,0	36	249,0	
SURF.COND.	20	940,0	26	950,0	1,57
INTERM.	13 3/8	1564,0	17 1/2	1579,0	1,80
INTERM.	9 5/8	1736,0	12 1/4	1750,0	2,07
OPEN HOLE			8 1/2	2400,0	

CONVENTIONAL CORES

Core no.	Intervals cored meters	Recovery		Series
		M	%	
1	1870.0 - 1888.0	9.0	50.0	M/E JURASSIC
2	1888.0 - 1900.0	9.0	75.0	M/E JURASSIC
3	1900.0 - 1917.0	5.7	33.5	M/E JURASSIC
4	1917.0 - 1935.0	11.3	62.8	M/E JURASSIC
5	1935.0 - 1945.0	5.7	57.0	M/E JURASSIC
6	2170.0 - 2187.5	17.1	97.7	M/E JURASSIC
7	2187.5 - 2201.0	12.5	92.6	M/E JURASSIC
8	2201.0 - 2213.0	10.5	87.5	M/E JURASSIC
9	2301.0 - 2316.5	13.9	89.7	TRIASSIC
10	2316.5 - 2323.0	5.5	84.6	TRIASSIC

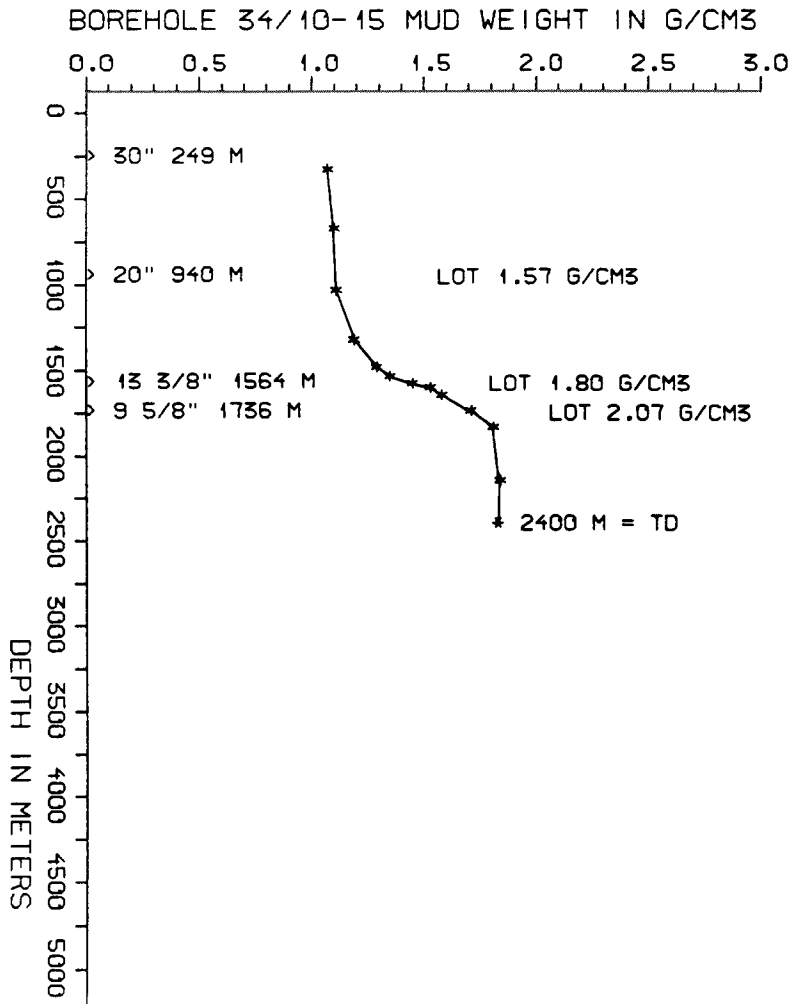
DRILL STEM TEST									
TEST NO	DEPTH BELOW KB	CHOKE SIZE mm	RECOVERY					PRESS. (psi)	
			OIL Sm3 /d	GAS M Sm3 /d	OIL GRAV. g/cm3	GAS GRAV. rel. air	GOR m3/m3	FSIP	WHP
				NONE					

AVAILABLE LOGS				
LOG TYPE	INTERVALS	1/200	1/500	
ISF SONIC GR	165 - 950	x		
ISF SONIC	950 - 1580	x		
ISF LSS MSFL	1581 - 1752	x		
ISF LSS	1752 - 1991	x		
ISF NGS BHC	1991 - 2302	x		
ISF NGS BHC MSFL	2302 - 2400	x		
ISF LSS MSFL GR - MERGE	240 - 2400			x
LDL CNL	950 - 1580	x		x
LDL CNL	1580 - 1752	x		x
LDL CNL	1752 - 1991	x		x
LDL CNL	1940 - 2406	x		x
DLL MSFL NGS	1752 - 1988	x		x
CDM	1737 - 2405	x		
CDM AP	1856 - 2404	x		x
GEODIP	1865 - 1975	1:40		
NGS	1752 - 1988	x		x
NGS	1991 - 2302	x		x
NGS	2302 - 2400	x		x
RFT (TEST-4)	442 - 443	x		
RFT	1752 - 2227	x		
RFT	1875 - 1875	x		
CBL VDL BI	664 - 1564	x		
CBL VDL BI	1430 - 1737	x		
VELOCITY (S.C.L.)	249 - 2400			x
(Seismic log, raw/stacked data, - rev. pol, plot 1 - 16, 1stk)				
(VSP, stacked data, nor/rev. pol, - plot 1 - 13, 1stk)				
(VSP; norm.polarity, minimum phase, 1stk)				
(Geogram Synthetic Seismogram, normal-polarity, minimum/zero phase, 10 cm/s, 3stk)				

MUD PROPERTIES			
DEPTH BELOW KB m	WEIGHT g/cm ³	FUNNEL VISC. sec	FILTRATE LOSS cm ³
260	1.04		
600	1.07		
965	1.08		
1255	1.16		
1415	1.26		
1465	1.32		
1510	1.42		
1535	1.50		
1580	1.55		
1670	1.68		
1765	1.78		
2080	1.81		

DRILL BIT CUTTINGS AND WET SAMPLES		
SAMPLE TYPE	INTERVAL BELOW KB	NUMBER OF SAMPLES
CUTTINGS	250 - 2400	280
WET SAMPLES	250 - 2399	430

SHALLOW GAS	
DEPTH INTERVAL m KB	REMARKS
333- 337	
370- 372	
403- 405	



WELL HISTORY - 34/10-15

GENERAL :

Well 34/10-15 was drilled as a wildcat on a horst block in the southeastern part of the Gullfaks Field. The primary purpose of the well was to test hydrocarbon accumulations in the Jurassic and Brent sands. Secondary objectives were the Early Jurassic Statfjord sands and to test shallow gas accumulations in the Pliocene sands. Neither the Late Statfjord nor the Brent sands were encountered. Cook sands contained residual oil. The shallow gas zone could not be tested due to technical problems.

OPERATIONS :

Well 34/10-15 was spudded 16.10.82 by the drilling rig "Nordraug". The 36" hole was completed before starting on the 26" section with a 12 1/4" pilot hole due to anticipated shallow gas. Both drilling parameters and logs confirmed the presence of gas. The pilot hole was then opened to 26". The 17 1/2" section was drilled without problems except some drag while pulling out on trips. 10 cores were cut in the 8 1/2" section. When running a RFT tool for the second run, it became stuck at 2226.5 m. After recovery plugs were set and casings were pulled. Several attempts to cut the 13 3/8" casing below 450 m. proved unsuccessful. The 13 3/8" casing was finally cut and retrieved at 300 m. The well was for this reason not tested in the shallow gas zones.

TESTING :

The well was not tested.

GEOLOGICAL TOPS

WELL: 34/10-15

	Depth m (RKB)
<i>Nordland Group</i>	188,5 m
<i>Hordaland Group</i>	898 m
<i>Rogaland Group</i>	1515 m
<i>Balder Fm</i>	1515 m
<i>Lista Fm</i>	1568 m
<i>Shetland Group</i>	1687 m
<i>Dunlin Group</i>	1827 m
<i>Drake Fm</i>	1827 m
<i>Cook Fm</i>	1870 m
<i>Burton Fm</i>	2034 m
<i>Amundsen Fm</i>	2049 m
<i>Cormorant/Statfjord Fm</i>	2213 m

TD = 2400 m