

Well no : 31/ 2-07 Operator : SHELL

Coordinates : 60 51 25.93 N UTM coord. : 6747127 N
03 27 9.21 E 524587 E

Licence no : 054 Permit no : 326

Rig : BORGNY DOLPHIN

Contractor : DOLPHIN SERVICES A/S

Bottom hole temperature : 36 deg.C Elev. KB : 25 M

Spud. date : 82.04.22 Water depth : 338 M

Compl. date : 82.06.14 Total depth : 1660 M

Spud. class : APPRAISAL Form. at TD : JURASSIC

Compl. class : P&A. OIL/GAS DISC. Prod. form :

Seisloca : 8007 - 147 SP 998

LICENSEES

5,000 CONOCO NORWAY INC.
5,000 NORSK HYDRO PRODUKSJON A.S
5,000 MOBIL DEVELOPMENT NORWAY A/S
35,000 A/S NORSKE SHELL LETE-OG UTVINNINGSAVDELINGEN
50,000 DEN NORSKE STATS OLJESELSKAP A.S

CASING AND LEAK-OFF TESTS

Type	Casing diam.	Depth below KB	Hole diam.	Hole depth below KB	Lot mud eqv. g/cm
CONDUCTOR	30	449.0	36	455.0	
SURF.COND.	20	812.0	26	825.0	1,54
INTERM.	13 3/8	1495.0	17 1/2	1517.0	1,59
INTERM.	9 5/8	1652.0	12 1/4	1660.0	

CONVENTIONAL CORES

Core no.	Intervals cored meters	Recovery		Series
		M	%	
1	1547.0 - 1556.5	9.5	100.0	L. JURASSIC
2	1556.5 - 1559.0	0.0	0.0	L. JURASSIC
3	1559.0 - 1577.8	15.8	84.0	L. JURASSIC
4	1578.0 - 1597.0	9.5	50.0	L. JURASSIC
5	1597.0 - 1616.0	18.8	98.9	L. JURASSIC
6	1616.0 - 1635.0	18.6	97.9	L. JURASSIC

DRILL STEM TEST									
TEST NO	DEPTH BELOW KB	CHOKE SIZE mm	RECOVERY					PRESS. (psi)	
			OIL Sm3 /d	GAS M Sm3 /d	OIL GRAV. g/cm3	GAS GRAV. rel. air	GOR m3/m3	BHP	WHP
			1	1584 - 1590	43.6	1184	5332		

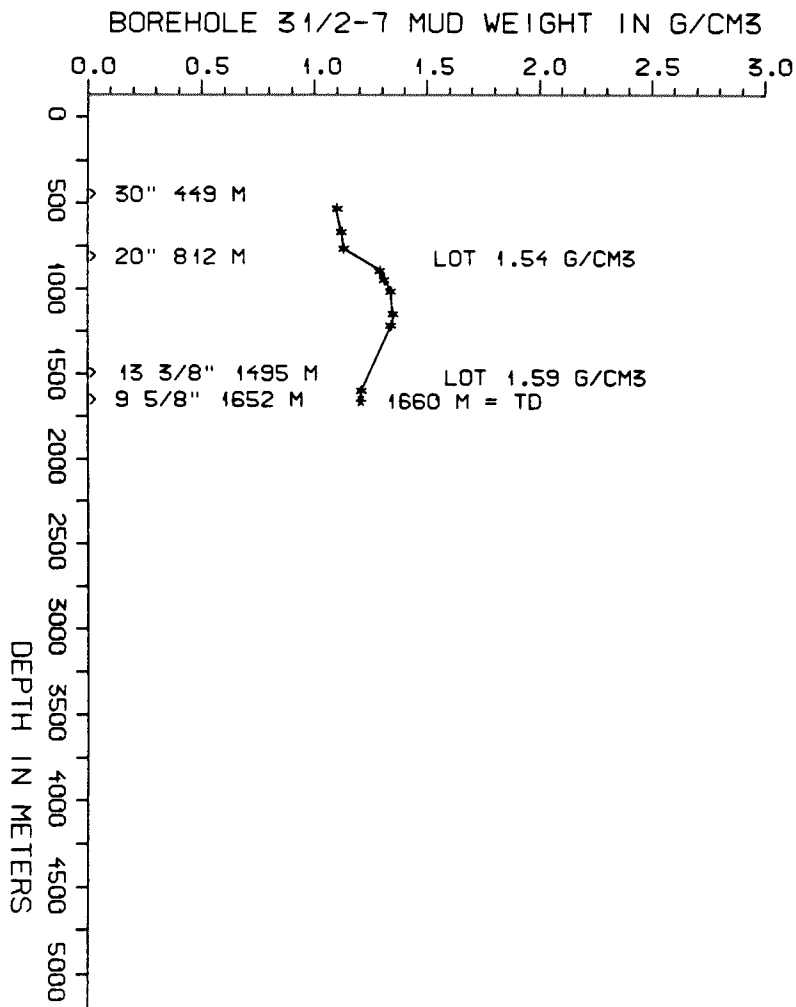
AVAILABLE LOGS			
LOG TYPE	INTERVALS	1/200	1/500
ISF BHC GR	363 - 823	x	x
ISF BHC	812 - 1510	x	x
ISF BHC	1495 - 1659	x	x
FDC CNL	440 - 824	x	x
FDC CNL	812 - 1509	x	x
FDC CNL	1495 - 1660	x	x
LDT	1495 - 1660	x	x
DLL MSFL	1495 - 1656	x	x
CDM	1495 - 1660	x	
CDM AP	1495 - 1660	x	x
CDM PP	1546 - 1660		
CDM SP	1546 - 1660		
RFT	1547 - 1646	x	
NGT	811 - 1660	x	
NGT	1495 - 1660	x	x
BGT	1522 - 1592	x	
BGT	1530 - 1593	x	
BGT	1518 - 1593	x	
GNT CCL	1510 - 1579	x	
CBL	600 - 1495	x	x
CBL	1113 - 1620	x	
MUD	465 - 1660		x
VELOCITY (S.C.L.)	363 - 1659		x

(Seismic log, rev/nor. polarity, -
plot 1-3, 1stk)

MUD PROPERTIES			
DEPTH BELOW KB m	WEIGHT g/cm ³	FUNNEL VISC. sec	FILTRATE LOSS cm ³
465	1.07	50	
550	1.08	50	
600	1.09	50	
700	1.10	50	
750	1.11	50	
800	1.10	48	
830	1.26	55	
850	1.27	50	
880	1.28	50	
950	1.31	50	
1080	1.32	47	
1150	1.31	47	
1530	1.18	46	
1650	1.19	54	

DRILL BIT CUTTINGS AND WET SAMPLES		
SAMPLE TYPE	INTERVAL BELOW KB	NUMBER OF SAMPLES
CUTTINGS		
WET SAMPLES	470 - 1660	170

SHALLOW GAS	
DEPTH INTERVAL m KB	REMARKS
	NONE



WELL HISTORY - 31/2-7

GENERAL :

The primary objective of well 31/2-7 was to appraise the oil accumulation in the area west of well 31/2-4 in the Troll Field. Both gas and oil were proven in sandstones of Jurassic age. The oil zone was found to be 28 m thick.

OPERATIONS :

The well was spudded 22.04.82. Drilling of the well was without any special problems. Tight spots were encountered in the 17 1/2" section. 6 cores were taken in the 8 1/2" section. The well was gravelpacked and acidized before testing.

TESTING :

The well was flowed for clean-up after a post gravel pack acidization had been carried out. This clean-up period lasted approx 1740 min. The well was then flowed for 6720 min. with a steady production of 1184 Sm³, 0.89 g/cm³ oil. The well was then closed in for a two hour build-up prior to plugging.

GEOLOGICAL TOPS

WELL: 31/2-7

	<i>Deph m (RKB)</i>
<i>Nordland Group</i>	363 m
<i>Hordaland Group</i>	776 m
<i>Rogaland Group</i>	1304 m
<i>Balder Fm</i>	1304 m
<i>Sele Fm</i>	1365.5 m
<i>Lista Fm</i>	1405.5 m
<i>Viking Group</i>	1535 m
<i>Draupne Fm</i>	1535 m
<i>Sognefjord Fm</i>	1545.5 m
<i>Heather Fm</i>	1601 m
	<u>TD = 1660 m</u>