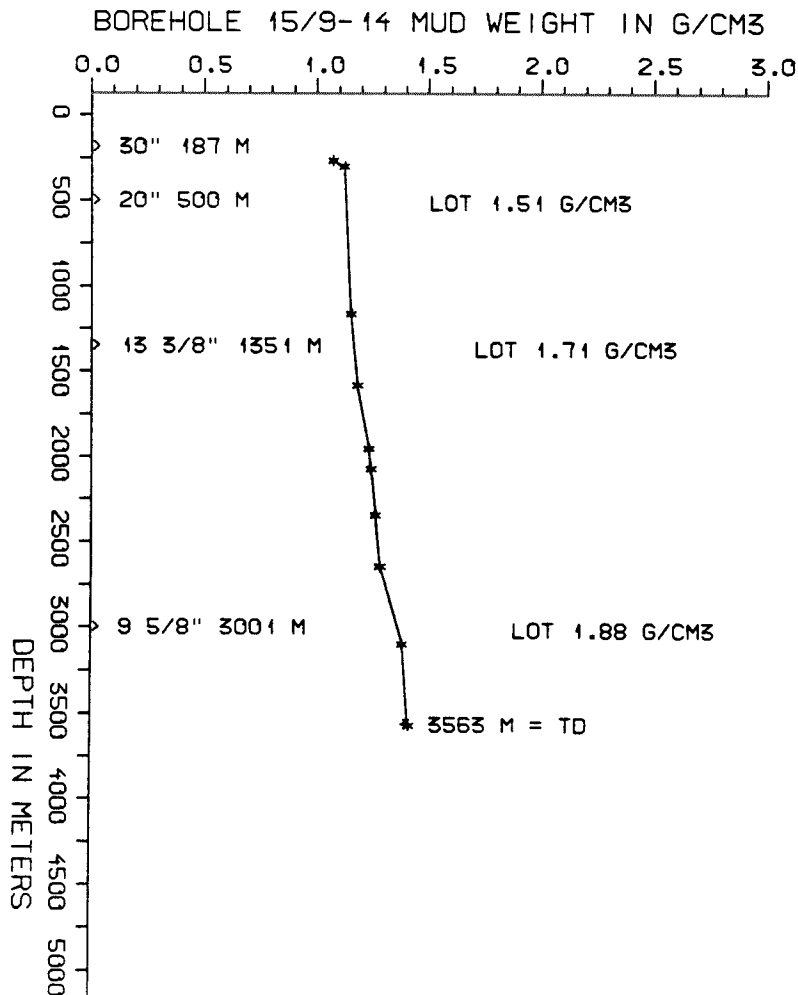


MUD PROPERTIES			
DEPTH BELOW KB m	WEIGHT g/cm ³	FUNNEL VISC. sec	FILTRATE LOSS cm ³
200	1.04	78	
235	1.09	58	
525	1.08	42	
805	1.09	46	
1095	1.12	43	
1375	1.13	45	
1515	1.15	58	
1700	1.14	50	
1890	1.20	51	
2010	1.21	50	
2280	1.23	52	
2580	1.25	50	
3030	1.35	54	
3475	1.38	59	

DRILL BIT CUTTINGS AND WET SAMPLES		
SAMPLE TYPE	INTERVAL BELOW KB	NUMBER OF SAMPLES
CUTTINGS	180 - 3536	640
WET SAMPLES	180 - 3536	667

SHALLOW GAS	
DEPTH INTERVAL m KB	REMARKS
	NONE



WELL HISTORY - 15/9-14

GENERAL :

The main objectives of the well 15/9-14 were the sandstones of Late to Middle Jurassic age. The secondary objective was the Triassic. All objectives proved waterbearing and the well was subsequently plugged and abandoned as a dry hole.

OPERATIONS :

Well 15/9-14 was spudded 01.05.82 by the drilling rig "Deepsea Saga". Operations were without incident except some problems with tight hole in the 12 1/4" section. 2 cores were taken in the 8 1/2" section.

TESTING :

The well was not tested.

GEOLOGICAL TOPS

WELL: 15/9-14

	Depth m (RKB)
Nordland Group	180 m
Utsira Fm	926 m
Hordaland Group	1077 m
Frigg Fm	2048 m
Rogaland Group	2382 m
Balder Fm	2382 m
Sele Fm	2425 m
Lista Fm	2484 m
Montrose Group	2623 m
Heimdal Fm	2623 m
Maureen Fm	2698 m
Chalk Group	2756 m
Ekofisk Fm	2756 m
Tor Fm	2765 m
Hod Fm	2889 m
Plenus Marl Fm	3040 m
Hidra Fm	3075 m
Cromer Knoll Group	3082 m
Rødby Fm	3082 m
Sola Fm	3131 m
Valhall Fm	3142 m
Viking Group	3176 m
Draupne Fm	3176 m
Vestland Group	3226 m
Triassic Group	3350 m - 3375 m?
Skagerrak Fm	3350 m - 3375 m?
Smith Bank Fm	3543 m

TD = 3563 m