

DRILL STEM TEST									
TEST NO	DEPTH BELOW KB	CHOKE SIZE mm	RECOVERY					PRESS. (psi)	
			OIL Sm3 /d	GAS M Sm3 /d	OIL GRAV. g/cm3	GAS GRAV. rel. air	GOR m3/m3	FSIP	WHP
				NONE					

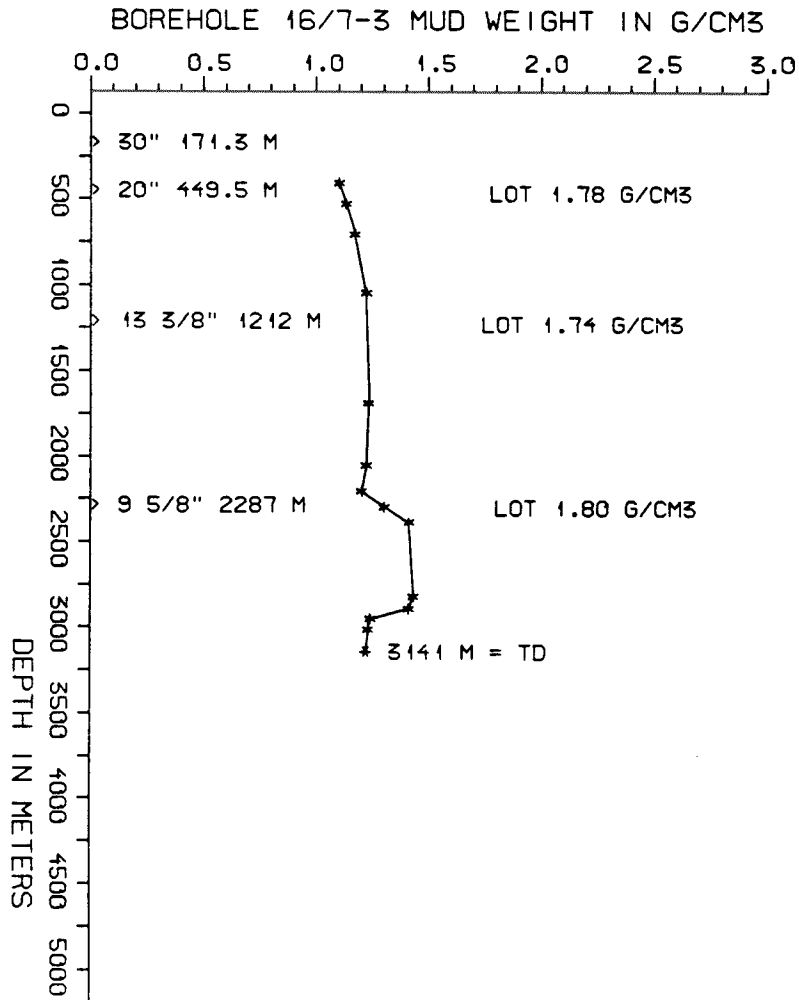
AVAILABLE LOGS				
LOG TYPE	INTERVALS	1/200	1/500	
IEL BHC AC GR	105 - 463	x		
IEL BHC AC	440 - 1223	x		
IEL BHC AC	1182 - 2297	x		
IEL BHC AC	2274 - 2847	x		
IEL BHC AC	2500 - 3134	x		
IEL BHC AC GR	105 - 3134			x
FDC CNL	2287 - 2851	x		x
FDC CNL	2500 - 3134	x		x
CDM	2286 - 3133	x		
CDM AP	2286 - 3133	x		x
FMT	2346 - 2841	x		
HRT	10 - 1183			x
HRT	1200 - 1775			x
CALIPER	110 - 460	x		x
CALIPER	350 - 1225	x		x
CBL	171 - 255			x
OVERPRESSURE	173 - 3141	1:2500		
MUD	110 - 3141			x
VELOCITY (S.C.L.)	200 - 3134			x

(Geogram Synthetic Seismogram, 10 cm/s, 2stk)

MUD PROPERTIES			
DEPTH BELOW KB m	WEIGHT g/cm ³	FUNNEL VISC. sec	FILTRATE LOSS cm ³
340	1.07	55	
460	1.10	40	
640	1.14	50	
980	1.19	40	
1620	1.20	47	
1990	1.19	43	
2140	1.17	46	
2230	1.27	60	
2320	1.38	51	
2750	1.40	60	
2820	1.38	50	
2880	1.21	54	
2940	1.20	56	

DRILL BIT CUTTINGS AND WET SAMPLES		
SAMPLE TYPE	INTERVAL BELOW KB	NUMBER OF SAMPLES
CUTTINGS	180 - 3140	559
WET SAMPLES	180 - 3140	560

SHALLOW GAS	
DEPTH INTERVAL m KB	REMARKS
	NONE



WELL HISTORY - 16/7-3

GENERAL :

The two primary objectives of well 16/7-3 were the Paleocene and Jurassic sandstones. No hydrocarbons were encountered in this well.

OPERATIONS :

The well was drilled without incident by the drilling rig "Glomar Biscay II". 2 cores were taken in the 8 1/2" section. 40 sidewall cores were taken in the interval 2296 - 3130 m.

TESTING :

The well was not tested.

GEOLOGICAL TOPS

WELL: 16/7-3

	Depth m (RKB)
Nordland Group	110 m
Utsira Group	835 m
Hordaland Group	1190 m
Rogaland Group	1194 m
Balder Fm	1194 m
Sele Fm	2048 m
Lista Fm	2107 m
Montrose Group	2244 m
Maureen Fm	2244 m
Chalk Group	2258 m
Ekofisk Fm	2258 m
Tor Fm	2265 m
Hod Fm	2311 m
Viking Group	2332,5 m
Draupne Fm	2332,5 m
Heather Fm	2333 m
Vestland Group	2343,5 m
Hugin Fm	2343,5 m
Smith Bank Fm	2385 m
Zechstein Group	2795 m
Kupferschiefer Fm	2856,5 m
Rotliegendes Group	2859 m
Frasenburgh Fm eqv	2859 m
Auk Fm	3099,5 m

TD = 3141 m