

Well no : 6407/ 2-01

Operator : SAGA

Coordinates : 64 58 04.97 N
07 28 28.12 EUTM coord. : 7205941 N
427977 E

Licence no : 074

Permit no : 332

Rig : WEST VENTURE

Contractor : A/S SMEDVIK DRILLING CO.

Bottom hole temperature : 101 deg.C

Elev. KB : 33 M

Spud. date : 82.06.03

Water depth : 265 M

Compl. date : 82.08.06

Total depth : 3870 M

Spud. class : WILDCAT

Form. at TD : TRIASSIC

Compl. class : P&A. DRY HOLE.

Prod. form :

Seisloca : 715 - 259 SP 840

LICENSEES

 15,000 NORSK AGIP A/S
 15,000 ARCO NORWAY INC.
 10,000 DEMINEX (NORGE A/S) A/S
 10,000 SAGA PETROLEUM A.S
 50,000 DEN NORSKE STATS OLJESELSKAP A.S

CASING AND LEAK-OFF TESTS

Type	Casing diam.	Depth below KB	Hole diam.	Hole depth below KB	Lot mud eqv. g/cm
CONDUCTOR	30	409,0	36	409,0	
SURF.COND.	20	1004,0	26	1013,0	1,64
INTERM.	13 3/8	2203,0	17 1/2	2215,0	1,74
INTERM.	9 5/8	2718,0	12 1/4	2729,0	1,83
OPEN HOLE			8 1/2	3870,0	

CONVENTIONAL CORES

Core no.	Intervals cored meters	Recovery		Series
		M	%	
1	2417.0 - 2436.0	17.3	91.1	L. CRETACEOUS
2	2940.0 - 2942.6	0.3	11.5	M. JURASSIC
3	2943.0 - 2961.0	14.7	81.7	M. JURASSIC
4	3085.0 - 3102.0	15.4	90.6	E. JURASSIC
5	3478.0 - 3480.0	1.6	80.0	E. JURASSIC
6	3480.0 - 3498.5	16.8	90.8	E. JURASSIC

DRILL STEM TEST									
TEST NO	DEPTH BELOW KB	CHOKE SIZE mm	RECOVERY					PRESS. (psi)	
			OIL Sm3 /d	GAS M Sm3 /d	OIL GRAV. g/cm3	GAS GRAV. rel. air	GOR m3/m3	FSIP	WHP

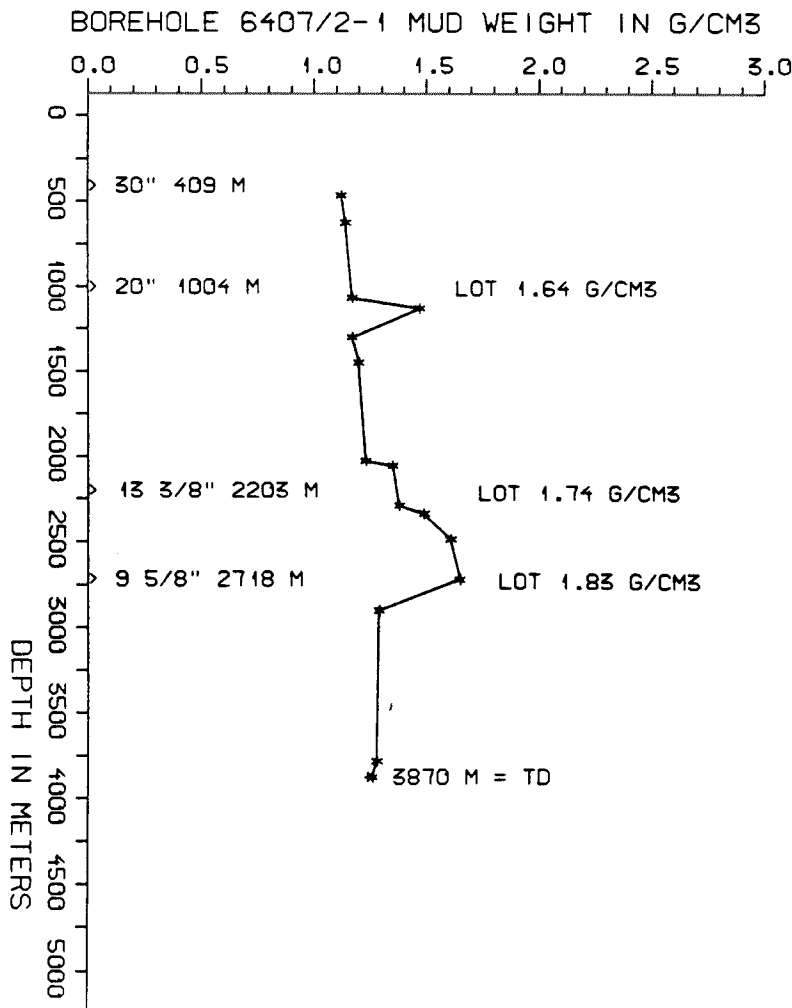
AVAILABLE LOGS			
LOG TYPE	INTERVALS	1/200	1/500
ISF LSS MSFL GR	408 - 1011	x	x
ISF LSS MSFL	1002 - 2213	x	x
ISF LSS MSFL	2201 - 2573	x	x
ISF LSS MSFL	2500 - 2726	x	x
ISF LSS MSFL	2717 - 3869	x	x
LDL CNL	408 - 1010	x	x
LDL CNL	1002 - 2213	x	x
FDC CNL	2201 - 2722	x	x
LDL CNL	2717 - 3869	x	x
CDM	2201 - 2727	x	
CDM	2717 - 3869	x	
CDM AP	2202 - 2727	x	x
CDM AP	2719 - 3867	x	x
RFT	2259 - 2279	x	
RFT	2947 - 3775	x	
TEMPERATURE	300 - 995	1:1000	x
CBL VDL	780 - 2200	x	
CBL VDL	1785 - 2717	x	
PRESSURE EVALUATION	299 - 3870	1:5000	
TEMPERATURE DATA	409 - 3870	1:5000	
MUD	409 - 3870		x
VELOCITY (S.C.L.)	409 - 3869		x

(VSP, nor. polarity, stacked data, - plot 1 - 11, 1stk)
(Geogram Synthetic Seismogram, 10 cm/s, - nor/rev. pol, 5stk)

MUD PROPERTIES			
DEPTH BELOW KB m	WEIGHT g/cm ³	FUNNEL VISC. sec	FILTRATE LOSS cm ³
400	1.09	36	
560	1.11	37	
1000	1.14	38	
1060	1.44	37	
1230	1.14	39	
1380	1.17	41	
1960	1.20	54	
1990	1.32	61	
2220	1.35	47	
2270	1.46	47	
2420	1.58	47	
2650	1.62	55	
2830	1.26	56	
3710	1.25	49	
3800	1.23	50	

DRILL BIT CUTTINGS AND WET SAMPLES		
SAMPLE TYPE	INTERVAL BELOW KB	NUMBER OF SAMPLES
CUTTINGS	410 - 3870	667
WET SAMPLES	410 - 3871	720

SHALLOW GAS	
DEPTH INTERVAL m KB	REMARKS
	NONE



WELL HISTORY - 6407/2-1

GENERAL :

This well was drilled as the fifth well offshore Mid-Norway. The primary targets of well 6407/2-1 were the Middle and Early Jurassic sandstones. The well was plugged and abandoned as a dry hole.

OPERATIONS :

The well was spudded 03.06.82 by the drilling rig "West Venture". High gas readings were experienced in the late part of the Cretaceous. The gas is most likely overpressured trapped gas. One core was cut in the 12 1/4" section and five cores in the 8 1/2" section.

TESTING :

The well was not tested.

GEOLOGICAL TOPS

WELL: 6407/2-1

	Depth m (RKB)
Nordland Group	299 m
Hordaland Group	1391,5 m
Rogaland Group	1997 m
Tare Fm	1997 m
Tang Fm	2095,5 m
Shetland Group	2147 m
Cromer Knoll Group	2606 m
Viking Group	2842,5 m
Spekk Fm	2842,5 m
Melke Fm	2908 m
Fangst Group	2939 m
Båt Group	3072 m
Ror Fm	3072 m
Tilje Fm	3176 m
Åre Fm	3345 m
"Triassic Grey Beds"	3723 m
"Triassic Red Beds"	3830 m
	<u>TD = 3870 m</u>