

Well no : 30/ 6-08 Operator : HYDRO

Coordinates : 60 32 11.92 N UTM coord. : 6711336 N  
 02 58 20.59 E 498484 E

Licence no : 053 Permit no : 333

Rig : TREASURE SEEKER

Contractor : WILHELMSSEN OFFSHORE SERVICES

Bottom hole temperature : 104 deg.C Elev. KB : 25 M

Spud. date : 82.06.15 Water depth : 121 M

Compl. date : 82.08.06 Total depth : 3600 M

Spud. class : WILDCAT Form. at TD : JURASSIC

Compl. class : P&A. DRY HOLE. Prod. form :

Seisloca : 703 - 125 SP 205

#### LICENSEES

-----

13,330 ELF AQUITAINE NORGE A/S  
 12,500 NORSK HYDRO PRODUKSJON A.S  
 10,000 MOBIL DEVELOPMENT NORWAY A/S  
 7,500 SAGA PETROLEUM A.S  
 50,000 DEN NORSKE STATS OLJESELSKAP A.S  
 6,670 TOTAL MARINE NORSK A.S

#### CASING AND LEAK-OFF TESTS

Type	Casing diam.	Depth below KB	Hole diam.	Hole depth below KB	Lot mud eqv. g/cm
CONDUCTOR	30	232,0	36	232,0	
SURF.COND.	20	941,0	26	955,0	1,59
INTERM.	13 3/8	2403,0	17 1/2	2414,0	1,79
OPEN HOLE			12 1/4	3600,0	

#### CONVENTIONAL CORES

Core no.	Intervals cored meters	Recovery		Series
		M	%	
1	2768.0 - 2786.0	16.7	92.8	L.JURASSIC
2	3033.0 - 3050.9	17.9	100.0	M.JURASSIC
3	3051.1 - 3069.1	16.8	93.3	M.JURASSIC
4	3156.0 - 3169.9	12.7	91.4	M.JURASSIC

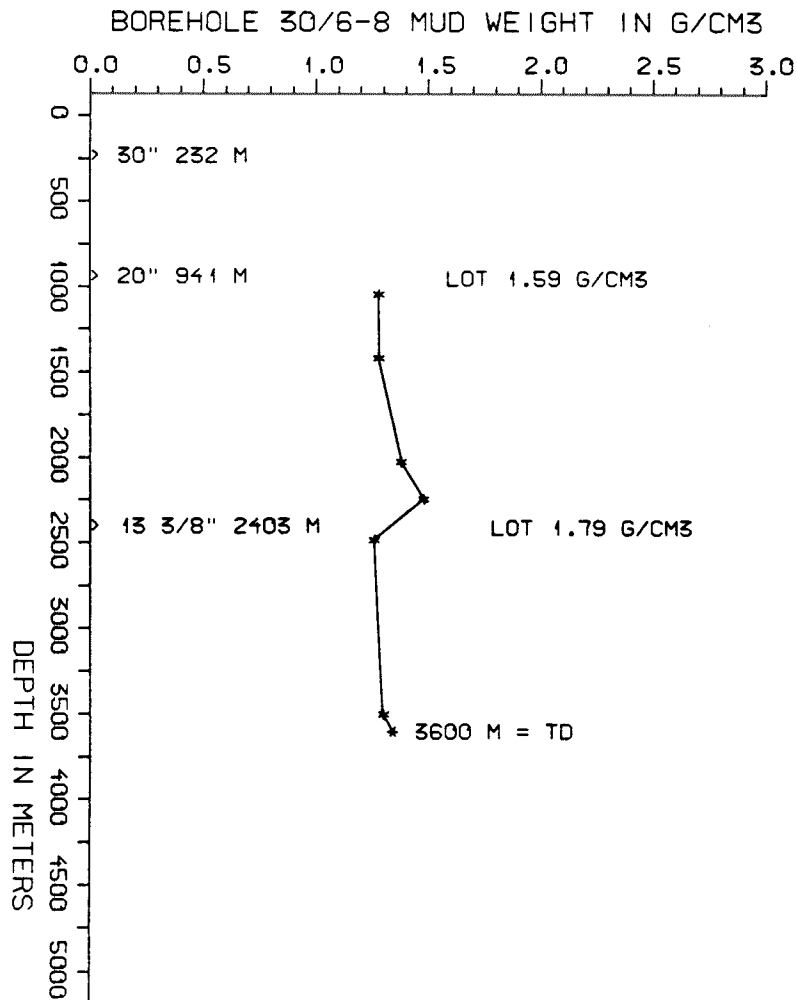
DRILL STEM TEST									
TEST NO	DEPTH BELOW KB	CHOKE SIZE mm	RECOVERY					PRESS. (psi)	
			OIL Sm3 /d	GAS M Sm3 /d	OIL GRAV. g/cm3	GAS GRAV. rel. air	GOR m3/m3	FSIP	WHP
	NONE								

AVAILABLE LOGS			
LOG TYPE	INTERVALS	1/200	1/500
ISF LSS GR	120 - 949	x	
ISF LSS	941 - 2417	x	
ISF LSS	2406 - 3604	x	
ISF SONIC GR	230 - 3604		x
LDL CNL	941 - 2416	x	x
LDL CNL	2406 - 3604	x	x
CDM	941 - 2417	x	
CDM	2406 - 3604	x	
CDM AP / CYBERDIP	814 - 2405	x	
CDM AP	1801 - 2417	x	x
CDM AP	2408 - 3603		x
GEODIP	2430 - 2650	x	1:40
RFT	2452 - 3797	1:100	
CBL	814 - 2405	x	
MUD	232 - 3600		x
VELOCITY (S.C.L.)	232 - 3604		x

MUD PROPERTIES			
DEPTH BELOW KB m	WEIGHT g/cm <sup>3</sup>	FUNNEL VISC. sec	FILTRATE LOSS cm <sup>3</sup>
980	1.25	55	
1350	1.25	44	
1960	1.35	44	
2180	1.45	22	
2420	1.23	35	
3100	1.23	35	
3430	1.27	12	
3560	1.32	40	

DRILL BIT CUTTINGS AND WET SAMPLES		
SAMPLE TYPE	INTERVAL BELOW KB	NUMBER OF SAMPLES
CUTTINGS		
WET SAMPLES	240 - 3593	735

SHALLOW GAS	
DEPTH INTERVAL m KB	REMARKS
	NONE



## WELL HISTORY - 30/6-8

### GENERAL :

Well 30/6-8 was a wildcat on the Epsilon structure in the south eastern part of block 30/6. The primary objective was to find hydrocarbon accumulations within the Brent Group. Other Jurassic sandstones were also considered as prospective targets. No hydrocarbon bearing sandstone intervals were encountered in this well.

### OPERATIONS :

Well 30/6-8 was spudded 15.06.82 by the drilling rig "Treasure Seeker". No serious problems occurred while drilling this well. Four cores were taken in the 12 1/4" section.

### TESTING :

The well was not tested, but a RFT run was made in the bottom 1200 meters.

# GEOLOGICAL TOPS

WELL: 30/6-8

	Depth m (RKB)
Nordland Group	146 m
Utsira Fm	675 m
Hordaland Group	862,5 m
Rogaland Group	1915,5 m
Balder Fm	1915,5 m
Sele Fm	2001,5 m
Lista Fm	2106 m
Montorse Group	2185,5 m
Maureen Fm	2185,5 m
Shetland Group	2201,5 m
Cromer Knoll Group	2304 m
Viking Group	2380 m
Draupne Fm	2380 m
Heather Fm	2445,5 m
Brent Group	3024 m
Tarbert Fm	3024 m
Ness Fm	3066,5 m
Etive Fm	3134,5 m
Dunlin Group	3171 m
Drake Fm	3171 m
Cook Fm	3349,5 m
Burton Fm	3404,5 m
Amundsen Fm	3470,5 m
Statfjord Fm	3532 m

TD = 3600 m