

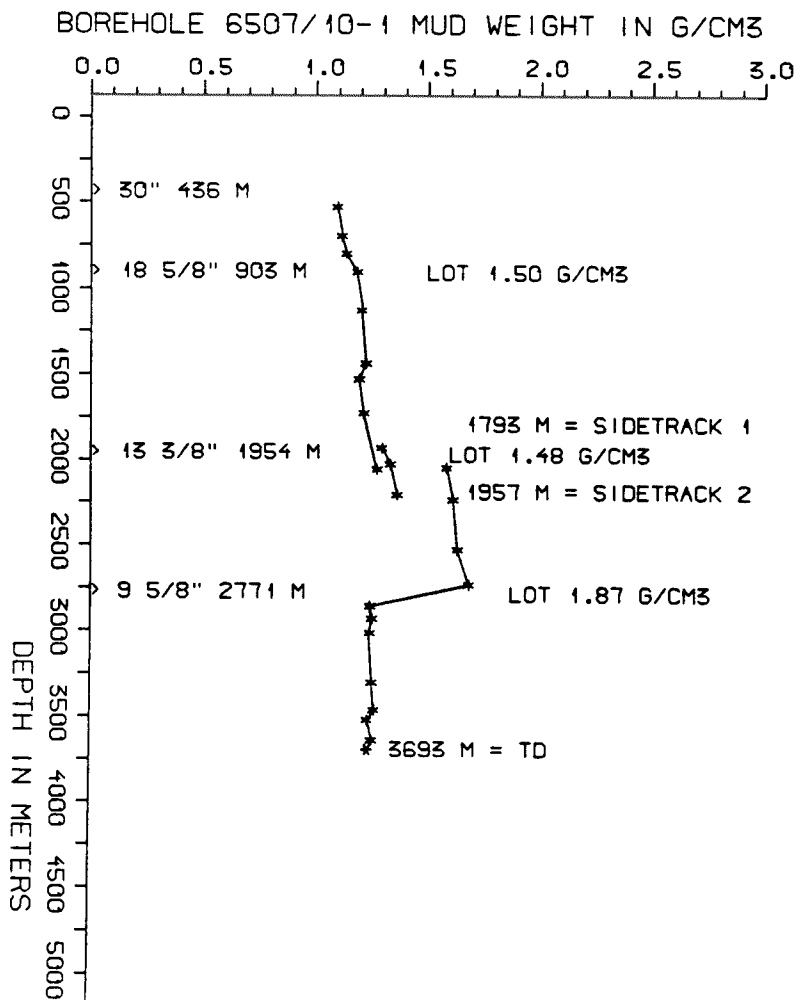
DRILL STEM TEST									
TEST NO	DEPTH BELOW KB	CHOKE SIZE mm	RECOVERY					PRESS. (psi)	
			OIL Sm3 /d	GAS M Sm3 /d	OIL GRAV. g/cm3	GAS GRAV. rel. air	GOR m3/m3	FSIP	WHP
	NONE								

AVAILABLE LOGS			
LOG TYPE	INTERVALS	1/200	1/500
GR	280 - 436	x	x
ISF SONIC GR	436 - 896	x	x
ISF SONIC MSFL	903 - 1969	x	x
ISF SONIC MSFL	1818 - 2779	x	x
ISF SONIC MSFL	2770 - 3697	x	x
LDL CNL	2770 - 3697	x	x
CDM	2770 - 3415	x	
CDM AP	2771 - 3413	x	x
RFT	2884 - 3658	x	
CBL	1700 - 1948	x	
CBL	1480 - 2769	x	
MUD	440 - 3693		x
VELOCITY (S.C.L.)	436 - 3690		x

MUD PROPERTIES			
DEPTH BELOW KB m	WEIGHT g/cm3	FUNNEL VISC. sec	FILTRATE LOSS cm3
460	1.06	31	
630	1.08	34	
730	1.10	37	
840	1.15	39	
960	1.16	35	
1060	1.17	40	
1260	1.18	44	
1370	1.19	44	
1460	1.16	43	
1660	1.18	42	
1990	1.24	46	
1865	1.26	58	
1960	1.30	60	
2140	1.33	62	
1980	1.55	62	
2170	1.58	75	
2460	1.60	68	
2660	1.65	72	
2785	1.21	44	
2860	1.22	57	
3390	1.23	70	
3450	1.20	58	
3570	1.22	60	
3680	1.21	72	

DRILL BIT CUTTINGS AND WET SAMPLES		
SAMPLE TYPE	INTERVAL BELOW KB	NUMBER OF SAMPLES
CUTTINGS	440 - 2145	110
WET SAMPLES	440 - 3693	390

SHALLOW GAS	
DEPTH INTERVAL m KB	REMARKS
	NONE



WELL HISTORY - 6507/10-1

GENERAL :

The main targets of well 6507/10-1 were sandstones of Middle to Late Jurassic age. Secondary targets were sandstones of Early Tertiary, Early Jurassic and Triassic age. Sandstones were found in the Middle and Early Jurassic. These were found to be water bearing. The Triassic sandstone horizon was not penetrated.

OPERATIONS :

Well 6507/10-1 was spudded 10.07.82 by the drilling rig "Sedco 707". An 11 % C₂ gas peak was recorded from a Miocene sandstone at 590 m. Tight hole was experienced at the bottom of the 13 3/8" section. While drilling the 12 1/4" section the drillstring stuck. After several attempts to free the string, the well was sidetracked. The sidetrack was drilled to 2007 m where the string again got stuck. The well was then sidetracked again to 2220 m at which point the string got stuck again. This time the string was jarred free and the 12 1/4" hole was finally drilled to 2780 m. 2 cores were taken in the 8 1/2" section. Problems with the BOP and wellhead delayed operations in this section.

TESTING :

The well was not tested.

GEOLOGICAL TOPS

WELL: 6507/10-1

	Depth m (RKB)
Nordland Group	323 m
Hordaland Group	1439 m
Rogaland Group	1980 m
Tare Fm	1980 m
Tang Fm	2039 m
Shetland Group	2087,5 m
Cromer Knoll Group	2771 m
Viking Group	2780,5 m
Spekk Fm	2780,5 m
Melke Fm	2835 m
Fangst Group	2881 m
Båt Group	2994 m
Ror Fm	2994 m
Tilje Fm	3080,5 m
Åre Fm	3299 m

TD = 3693 m