

Well no : 7120/ 9-01 Operator : HYDRO

Coordinates : 71 29 26.57 N UTM coord. : 7932343 N  
20 56 49.47 E 498124 E

Licence no : 078 Permit no : 0338

Rig : TREASURE SCOUT

Contractor : WILHELMSSEN OFFSHORE SERVICES

Bottom hole temperature : 55 deg.C Elev. KB : 23 M

Spud. date : 82.07.25 Water depth : 320 M

Compl. date : 82.09.26 Total depth : 2300 M

Spud. class : WILDCAT Form. at TD : L.TRIASSIC

Compl. class : P&A. GAS DISCOVERY Prod. form :

Seisloca : 513 - 353 SP 1815

#### LICENSEES

15,000 ELF AQUITAINE NORGE A/S  
25,000 NORSK HYDRO PRODUKSJON A.S  
10,000 A/S NORSKE SHELL LETE-OG UTVINNINGSAVDELINGEN  
50,000 DEN NORSKE STATS OLJESELSKAP A.S

#### CASING AND LEAK-OFF TESTS

Type	Casing diam.	Depth below KB	Hole diam.	Hole depth below KB	Lot mud eqv. g/cm
CONDUCTOR	30	404,0	36	405,0	
SURF.COND.	20	744,0	26	760,0	1,67
INTERM.	13 3/8	1651,0	17 1/2	1665,0	1,80
INTERM.	9 5/8	2285,3	12 1/4	2300,0	

#### CONVENTIONAL CORES

Core no.	Intervals cored meters	Recovery		Series
		M	%	
1	1843.0 - 1861.3	18.3	100.0	E.JURASSIC
2	1861.3 - 1879.6	18.3	100.0	E.JURASSIC
3	1879.6 - 1894.5	14.9	100.0	E.JURASSIC
4	1894.5 - 1911.9	17.4	100.0	E.JURASSIC
5	1911.9 - 1929.0	17.1	100.0	E.JURASSIC
6	1929.0 - 1947.4	18.4	100.0	E.JURASSIC
7	1947.4 - 1965.7	18.3	100.0	E.JURASSIC

DRILL STEM TEST									
TEST NO	DEPTH BELOW KB	CHOKE SIZE mm	RECOVERY					PRESS. (psi)	
			OIL Sm <sup>3</sup> /d	GAS M Sm <sup>3</sup> /d	OIL GRAV. g/cm <sup>3</sup>	GAS GRAV. rel. air	GOR m <sup>3</sup> /m <sup>3</sup>	FSIP	WHP
			1	1935 - 1939		NO FLOW			
2	1858 - 1864		NO FLOW						
2A	1869 - 1874	20.64	10.9*	291	0.764*	0.72	26697		1305

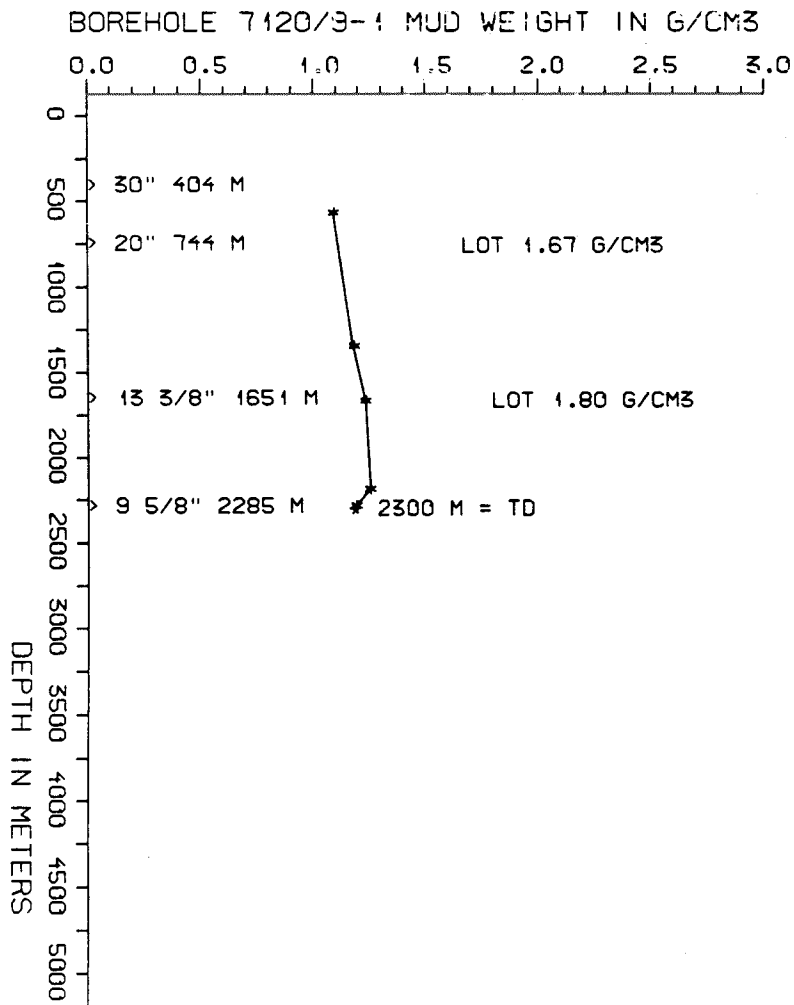
\* = CONDENSAT

AVAILABLE LOGS			
LOG TYPE	INTERVALS	1/200	1/500
ISF LSS GR	404 - 759	x	x
ISF SONIC	744 - 1655	x	x
ISF SONIC	1651 - 1965	x	x
ISF LSS	1800 - 2297	x	x
LDL CNL	404 - 759	x	x
LDL CNL	744 - 1655	x	x
LDL CNL	1651 - 1966	x	x
LDL CNL	1935 - 2297	x	x
DLL MSFL	1651 - 1966	x	x
CDM	744 - 1654	x	
CDM	1651 - 2296	x	
CDM AP	745 - 1656	x	x
CDM AP	1652 - 2295	x	x
RFT( TEST 1-5,7-32)		x	
RFT( TEST 1-9)		x	
NGS	1651 - 2297	x	x
CBL VDL	440 - 1646	x	
MUD	400 - 2300		x
VELOCITY	404 - 2297		x
(+Geogram Synth Seism, n/r.pol., 10cm/s 6 stk) (+Seismic Log, 2/10-82, 1 stk) (+V.S.P., 2/10-82, n/r.pol., 1 stk)			

MUD PROPERTIES			
DEPTH BELOW KB m	WEIGHT g/cm <sup>3</sup>	FUNNEL VISC. sec	FILTRATE LOSS cm <sup>3</sup>
500	1.06	38	
1280	1.15	42	
1600	1.20	47	
2120	1.22	46	
2215	1.16	52	

DRILL BIT CUTTINGS AND WET SAMPLES		
SAMPLE TYPE	INTERVAL BELOW KB	NUMBER OF SAMPLES
CUTTINGS		
WET SAMPLES	410 - 2300	400

SHALLOW GAS	
DEPTH INTERVAL m KB	REMARKS
	NONE



## WELL HISTORY - 7120/9-1

### GENERAL :

Well 7120/9-1 was drilled to test sandstone reservoirs of Middle to Early Jurassic age on a structure within the Hammerfest Basin. Gas was proven in these sandstones.

### OPERATIONS :

"Treasure Scout" spudded the well on 25.07.82. The 36" section was drilled with a 17 1/2" bit followed by a 36" hole opener. Low penetration rates were encountered due to the overcompacted nature of the clay formation together with the presence of numerous glacial erratic boulders. The hole had to be reamed 3 times before the 30" casing was set. The well reached TD at 2300 m without any further major problems. 7 cores were taken in the 12 1/4" section.

### TESTING :

Two tests were performed on this well. DST no. 1 was opened for initial flow on a 15.9 mm. choke but did not flow. The well was perforated again and flowed for 10 minutes during DST no. 2. After a one hour build-up period, the well was again opened for flow - without result. The well was reperforated in DST no. 2A and flowed initially for 10 minutes. After a one hour build-up period, the well was flowed. During the main flow-period an ice-plug formed in the tubing. 3 sets of separator samples were taken during this flow period.

GEOLOGICAL TOPS

WELL: 7120/9-1

	<i>Depth m (RKB)</i>
<i>Quaternary</i>	343 m
<i>Tertiary</i>	590 m
<i>Cretaceous</i>	926 m
<i>Jurassic</i>	1817 m
<i>Triassic</i>	1970-2060 m
	<u>TD = 2300 m</u>