

Well no : 7/11-06 Operator : HYDRO

Coordinates : 57 06 59.45 N UTM coord. : 6330563 N
 02 36 55.16 E 476703 E

Licence no : 070 Permit no : 342

Rig : TREASURE SEEKER

Contractor : WILHELMSEN OFFSHORE SERVICES

Bottom hole temperature : 148 deg.C Elev. KB : 25 M

Spud. date : 82.08.09 Water depth : 71 M

Compl. date : 82.10.20 Total depth : 4500 M

Spud. class : WILDCAT Form. at TD : TRIASSIC

Compl. class : P&A. DRY HOLE. Prod. form :

Seisloca : SG 8048 - 207 SP 240

LICENSEES

7,500 CONOCO NORWAY INC.
 25,000 NORSK HYDRO PRODUKSJON A.S
 7,500 MOBIL DEVELOPMENT NORWAY A/S
 10,000 SAGA PETROLEUM A.S
 50,000 DEN NORSKE STATS OLJESELSKAP A.S

CASING AND LEAK-OFF TESTS

Type	Casing diam.	Depth below KB	Hole diam.	Hole depth below KB	Lot mud eqv. g/cm
CONDUCTOR	30	182,0	36	182,5	
SURF.COND.	20	654,0	26	670,0	1,92
INTERM.	13 3/8	2044,0	17 1/2	2060,0	1,85
INTERM.	9 5/8	3955,0	12 1/4	3970,0	2,03
OPEN HOLE			8 3/8	4500,0	

CONVENTIONAL CORES

Core no.	Intervals cored meters	Recovery M %	Series
1	4100.0 - 4117.6	17.3 98.3	L.JURASSIC
2	4118.0 - 4131.1	13.1 100.0	L.JURASSIC
3	4131.1 - 4149.4	18.3 100.0	L.JURASSIC
4	4149.4 - 4157.8	8.4 100.0	TRIASSIC

DRILL STEM TEST									
TEST NO	DEPTH BELOW KB	CHOKE SIZE mm	RECOVERY					PRESS. (psi)	
			OIL Sm3 /d	GAS M Sm3 /d	OIL GRAV. g/cm3	GAS GRAV. rel. air	GOR m3/m3	FSIP	WHP
	NONE								

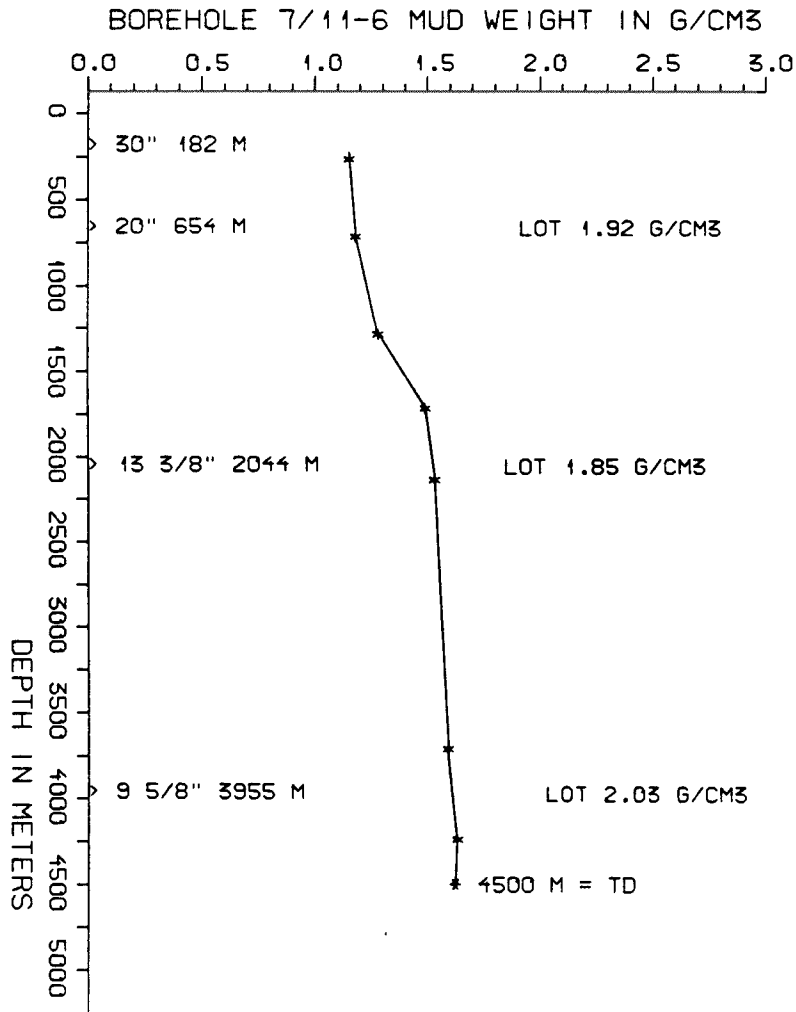
AVAILABLE LOGS			
LOG TYPE	INTERVALS	1/200	1/500
ISF LSS GR	96 - 668	x	x
ISF LSS	652 - 2057	x	x
ISF LSS	2042 - 3971	x	x
ISF LSS	3955 - 4225	x	x
ISF LSS MSFL	4090 - 4498	x	x
LDL	652 - 2058	x	x
LDL CNL	2042 - 3972	x	x
LDL CNL	3955 - 4226	x	x
LDL CNL	4145 - 4499	x	x
CDM	2042 - 3973	x	
CDM	3955 - 4491	x	
CDM AP	2043 - 3973	x	x
CDM AP	3955 - 4491	x	x
RFT	4106 - 4205	1:100	
TEMPERATURE	1200 - 1995	x	x
DXC NXB	180 - 4500	1:5000	
TEMPERATURE DATA	180 - 4500	1:5000	
DRILLING DATA - PRESSURE	180 - 4500	1:5000	
MUD	180 - 4500		x
VELOCITY (S.C.L.)	96 - 4490		x

(Geogram Synthetic Seismogram, nor/rev.pol., min. phase, 10 cm/s, 2stk)

MUD PROPERTIES			
DEPTH BELOW KB m	WEIGHT g/cm ³	FUNNEL VISC. sec	FILTRATE LOSS cm ³
200	1.12		
650	1.15		
1220	1.25	44	
1650	1.46	51	
2070	1.50	48	
3640	1.56	38	
4170	1.60	45	
4500	1.60	48	

DRILL BIT CUTTINGS AND WET SAMPLES		
SAMPLE TYPE	INTERVAL BELOW KB	NUMBER OF SAMPLES
CUTTINGS		
WET SAMPLES	190 - 4500	800

SHALLOW GAS	
DEPTH INTERVAL m KB	REMARKS
537 730	GASCHARGED SAND SMALL SHALLOW GAS



WELL HISTORY - 7/11-6

GENERAL :

The primary objective of well 7/11-6 was to test Jurassic sandstones. The secondary objective of the well was to test sandstones of Triassic age. Both the Jurassic and Triassic sandstones proved waterbearing.

OPERATIONS :

The well was spudded by the drilling rig "Treasure Seeker" 09.08.87. The well was drilled without incident except some problems with gumbo in the 17 1/2" section. 4 cores were taken in the 8 3/8" section.

TESTING :

The well was not tested. One RFT sample was attempted taken at 4117 m, but this failed.

GEOLOGICAL TOPS

WELL: 7/11-6

	Depth m (RKB)
Hordaland Group	1498 m
Rogaland Group	3015 m
Balder Fm	3015 m
Sele Fm	3044 m
Lista Fm	3086 m
Montrose Group	3151 m
Maureen Fm	3151 m
Chalk Group	3225 m
Ekofisk Fm	3225 m
Tor Fm	3290 m
Hod Fm	3693 m
Hidra Fm	3821 m
Cromer Knoll Group	3895 m
Rødby Fm	3895 m
Valhall Fm	3945 m
Vestlands Group	4007,5 m
Kimmeridge Clay Fm	4007,5 m
Ula Fm	4098 m
Triassic Group	4145 m
Smith Bank Fm	4145 m

TD = 4500 m