

Well no : 7121/07-02

Operator : STATOIL

Coordinates : 71 26 37.91 N
21 03 21.42 EUTM coord. : 7927117 N
501987 E

Licence no : 100

Permit no : 520

Rig : ROSS ISLE

Rig type : SEMI-SUB.

Contractor : ROSS DRILLING CO. A/S

Bottom hole temperature : 0 deg.C

Elev. KB : 22 M

Spud. date : 86.07.07

Water depth : 343 M

Compl. date : 86.08.12

Total depth : 2156 M

Spud. class : WILDCAT

Form. at TD : TRIASSIC

Compl. class : P&A. GAS DISCOVERY

Prod. form :

Seisloca : ST 8412 - 320 SP. 520

LICENSEES

4.000000 DEMINEX (NORGE) A/S
 1.000000 DET NORSKE OLJESELSKAP AS
 35.000000 ELF AQUITAINE NORGE A/S
 50.000000 DEN NORSKE STATS OLJESELSKAP A.S
 10.000000 SVENSKA PETROLEUM EXPLORATION A/S

CASING AND LEAK-OFF TESTS

Type	Casing diam.	Depth below KB	Hole diam.	Hole depth below KB	Lot mud eqv. g/cm3
CONDUCTOR	30	422.0	36	426.0	.
SURF.COND.	20	654.0	26	675.0	1.74
INTERM.	13 3/8	1680.0	17 1/2	1698.0	1.53
INTERM.	9 5/8	2140.0	12 1/4	2156.0	.

CONVENTIONAL CORES

Core no.	Intervals cored meters	Recovery		Series
		M	%	
1	1903.0 - 1927.2	24.2	100.0	
2	1928.5 - 1939.5	11.0	100.0	

MUD PROPERTIES

Depth below KB meter	Mud weigth g/cm3	Viscosity	Mud type
425.000	1.08	0.0	WATER BASED
458.000	1.10	800.0	WATER BASED
675.000	1.18	800.0	WATER BASED
678.000	1.10	1100.0	WATER BASED
795.000	1.11	1500.0	WATER BASED
1060.000	1.14	2100.0	WATER BASED
1520.000	1.15	2100.0	WATER BASED
1680.000	1.20	2000.0	WATER BASED
1698.000	1.15	2100.0	WATER BASED

1698.000	1.20	1900.0	WATER BASED
1701.000	1.20	1600.0	WATER BASED
1850.000	1.26	1500.0	WATER BASED
1867.000	1.21	1700.0	WATER BASED
1903.000	1.24	1700.0	WATER BASED
2114.000	1.26	1800.0	WATER BASED
2156.000	1.25	1800.0	WATER BASED
2156.000	1.24	1800.0	WATER BASED
2156.000	1.25	1800.0	WATER BASED

DRILL STEM TEST

INTERVALS AND PRESSURES

Test no	interval meter	Choke size	Pressure (PSI)		
			WHP	BTHP	FFP
1.0	1881.800 - 1898.800	15.9	2211.7	3031.2	2770.1
	Test temperature: 55.7 °C				

RECOVERY

Test no.	Oil Sm ³ /d	Gas Sm ³ /d	Oil grav. g/cm ³	Gas grav. rel. air	GOR m ³ /m ³
1.0	18	502800	0.764	0.780	27626

DRILL BIT CUTTINGS AND WET SAMPLES

SAMPLE TYPE	INTERVAL BELOW KB	NUMBER OF SAMPLES
Cutting	430-2160	200
Wet Samples	430-2160	315

SHALLOW GAS

Interval below KB	REMARKS

AVAILABLE LOGS

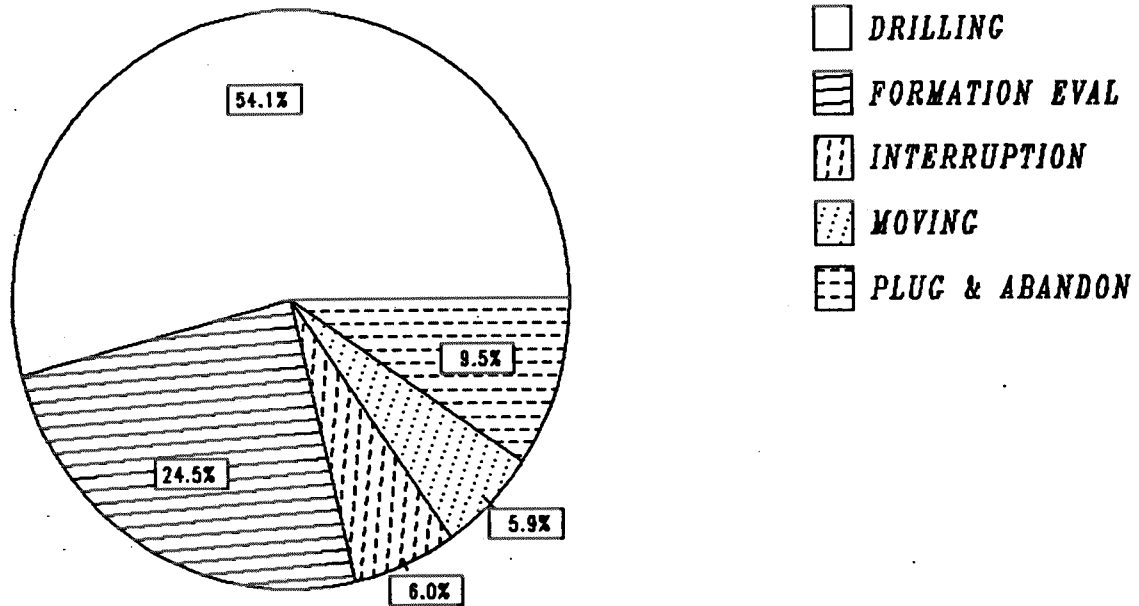
LOG TYPE	INTERVALS	1/200	1/500	Div.
DIFL LS BHC AC GR C	347.000 - 1619.000	X	X	
DIFL LS BHC AC CAL	653.000 - 1619.000	X	X	
DIFL LS BHC AC GR	1600.000 - 2155.000	X	X	
CDL GR	653.500 - 1600.000	X	X	
CDL CNL GR	1677.500 - 2154.500	X	X	
DLL MLL GR	1870.000 - 2004.400	X		
CDM AP/4-ARM	1677.000 - 2154.000	X		X
SHDT	1677.000 - 2154.000	X		
FMT	1882.000 - 2068.000			X
FMT HP CRYSTAL	1882.500 - 2068.000			X

ACBL VDL	345.000 - 1677.500	X	
ACBL VDL	1264.000 - 1925.000	X	
MUD	426.000 - 2156.000		X
VELOCITY	347.000 - 2155.000		1:1000

(Display of well velocity survey rec. 1-357 2 stk.)
 (Airgun well velocity and calibrated log data 1 stk.)
 (Vsp.Norm/Rev.Polarity,10cm/s 11 stk.)
 (Twp-way travel time,10cm/s 1 stk.)
 (Synthetic seismogram marine, 10cm/s 4 stk.)

DAILY DRILLING REPORT SYSTEM

Main operations for well : 7121/07 -02



Total : 912.00 hours

Main operation	Minutes	Hours	% of total
DRILLING	29610	493.50	54.11
FORMATION EVAL	13410	223.50	24.51
INTERRUPTION	3270	54.50	5.98
MOVING	3210	53.50	5.87
PLUG & ABANDON	5220	87.00	9.54

MAIN OPERATIONS FOR WELL : 7121 / 07 - 02

MAIN OPERATION : DRILLING

Sub operations	Minutes	Hrs	% of total
BOP ACTIVITIES	330	5.50	1.11
BOP/WELLHEAD EQ	4320	72.00	14.59
CASING	4830	80.50	16.31
CIRC/COND	2250	37.50	7.60
DRILL	9693	161.55	32.74
HOLE OPEN	1860	31.00	6.28
OTHER	270	4.50	0.91
PRESS DETECTION	300	5.00	1.01
REAM	60	1.00	0.20
SURVEY	810	13.50	2.74
TRIP	4887	81.45	16.50
Total	29610	493.50	100.00

MAIN OPERATION : FORMATION EVAL

Sub operations	Minutes	Hrs	% of total
CIRC/COND	360	6.00	2.68
CORE	1110	18.50	8.28
DST	4500	75.00	33.56
LOG	6060	101.00	45.19
TRIP	1380	23.00	10.29
Total	13410	223.50	100.00

MAIN OPERATION : INTERRUPTION

Sub operations	Minutes	Hrs	% of total
FISH	1230	20.50	37.61
MAINTAIN/REP	1800	30.00	55.05
OTHER	90	1.50	2.75
WELL CONTROL	150	2.50	4.59
Total	3270	54.50	100.00

MAIN OPERATION : MOVING

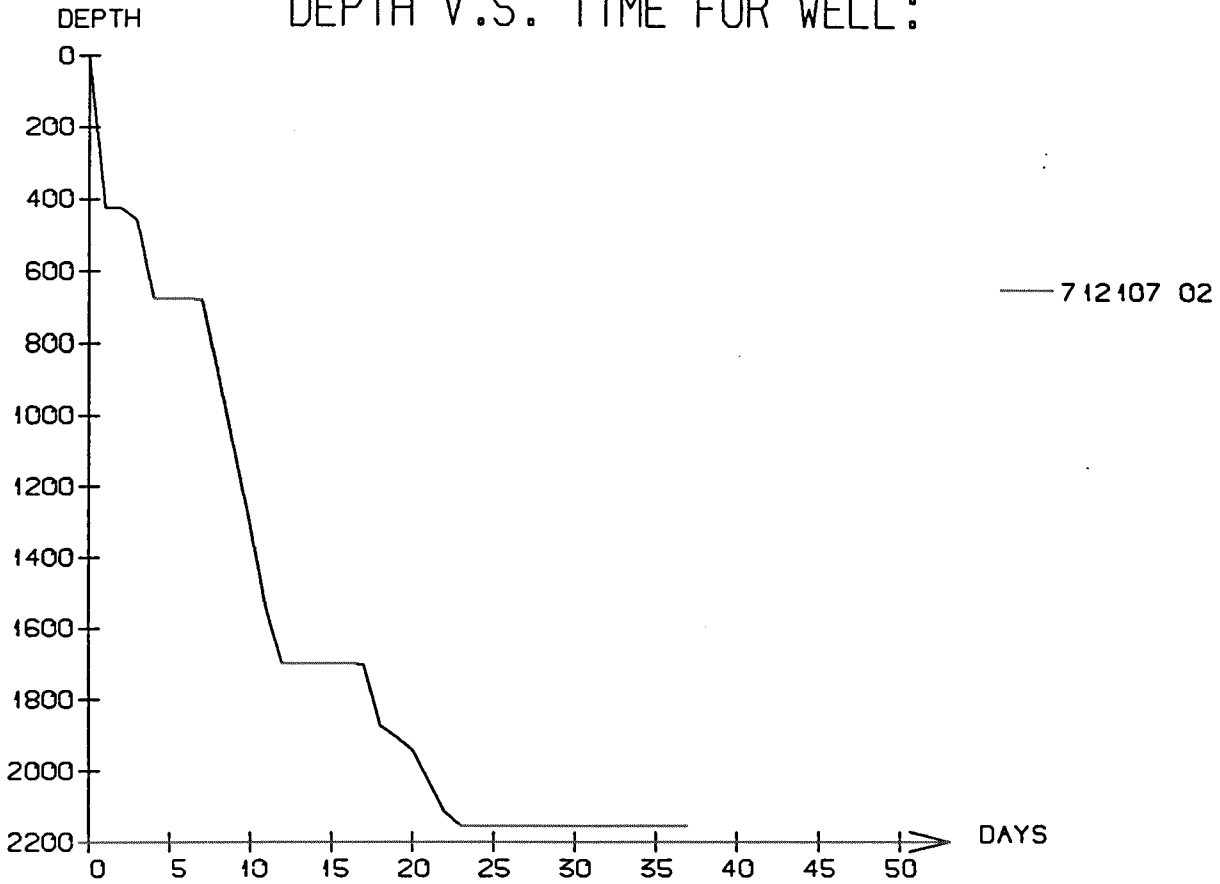
Sub operations	Minutes	Hrs	% of total
ANCHOR	2400	40.00	74.77
TRANSIT	810	13.50	25.23
Total	3210	53.50	100.00

MAIN OPERATION : PLUG & ABANDON

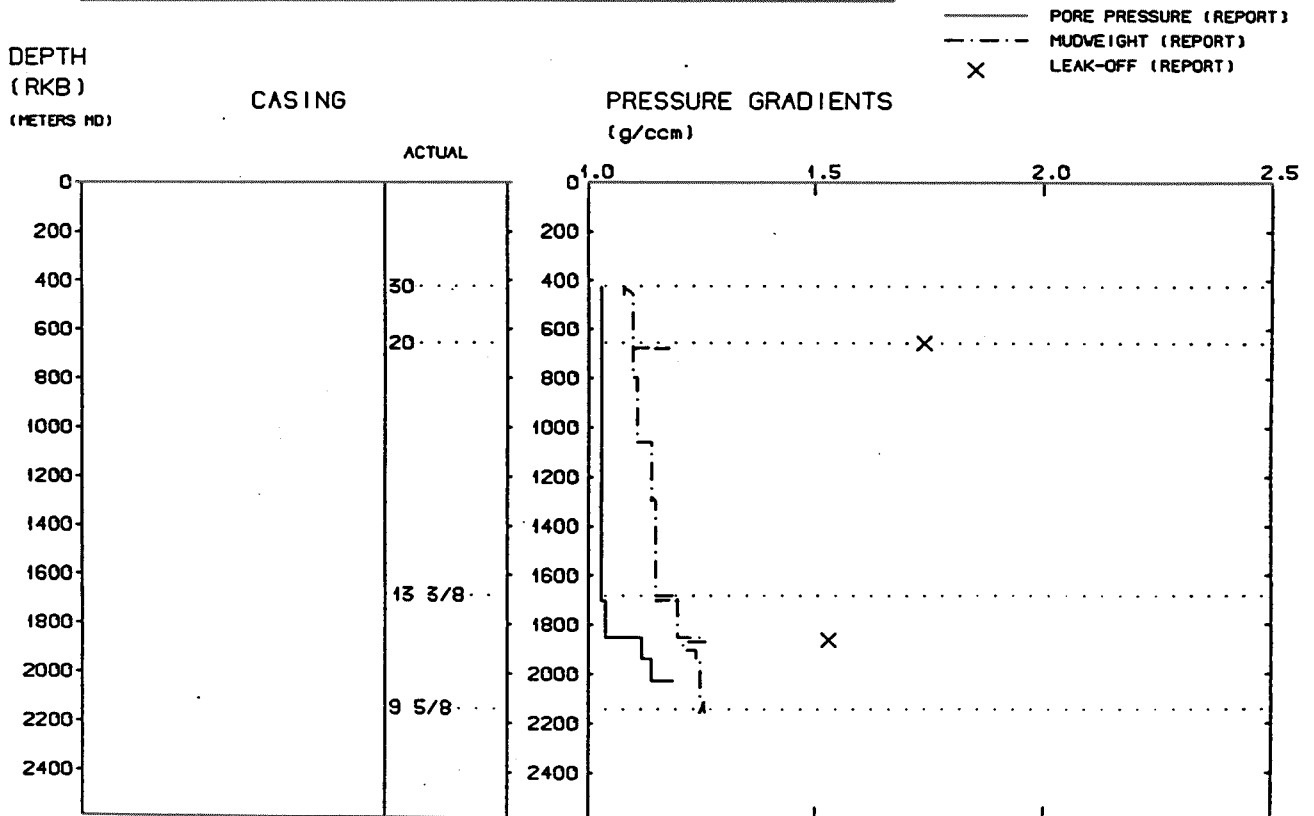
Sub operations	Minutes	Hrs	% of total
CEMENT PLUG	330	5.50	6.32
CIRC/COND	600	10.00	11.49
CUT	1230	20.50	23.56
EQUIP RECOVERY	540	9.00	10.34
MECHANICAL PLUG	1140	19.00	21.84
OTHER	240	4.00	4.60
PERFORATE	240	4.00	4.60
TRIP	900	15.00	17.24
Total	5220	87.00	100.00

Total time used 912.00 hrs

DEPTH V.S. TIME FOR WELL:



WELL: 712107 02 PRESSURE COMPOSITE PLOT



Well History 7121/7-2

GENERAL:

Well 7121/7-2 was drilled on the Beta structure on Tromsøklaket, and was designed to test possible hydrocarbon potential of Middle to Lower Jurassic sandstones.

Total depth was to be in rocks of Triassic age.

OPERATIONS:

Wildcat well 7121/7-2 was spudded 7 July 1986 by Ross Drilling rig Ross Isle and completed 12 August 1986 at a depth of 2156 m in Triassic rocks. Drilling proceeded without significant problems.

2 cores were cut in the interval 1903 - 1939 m RKB. The Stø Formation was encountered at 1881.5 m, 20 m deeper than prognosed. The gas/water contact was defined at 1914 m RKB from the logs.

The well is plugged and abandoned as a hydrocarbon discovery.

TESTING:

1 DST test was performed in the interval 1881.5 - 1898.8 m RKB.

GEOLOGICAL TOPS

WELL: 7121/7-2

Depth m (RKB)

<i>Nordland Group</i>	347.0
<i>Sotbakken Group</i>	430.0
<i>Torsk Fm.</i>	430.0
<i>Nygrunnen Group</i>	889.0
<i>Kveite Fm.</i>	889.0
<i>Nordvestbanken Group</i>	923.0
<i>Kolmule Fm.</i>	923.0
<i>Kolje Fm.</i>	1578.0
<i>Knurr Fm.</i>	1728.0
<i>Teistengrunnen Group</i>	1806.0
<i>Hekkingen Fm.</i>	1806.0
<i>Fuglen Fm.</i>	1880.0
<i>Realgrunnen Group</i>	1881.5
<i>Stø Fm.</i>	1881.5
<i>Nordmela Fm.</i>	1937.5
<i>Tubåen Fm.</i>	2028.0
<i>Fruholmen Fm.</i>	2072.5
<i>T.D.</i>	2156.0