

WELL NO: 35/11-2

OPERATOR: MOBIL EXPLORATION NORWAY INC.

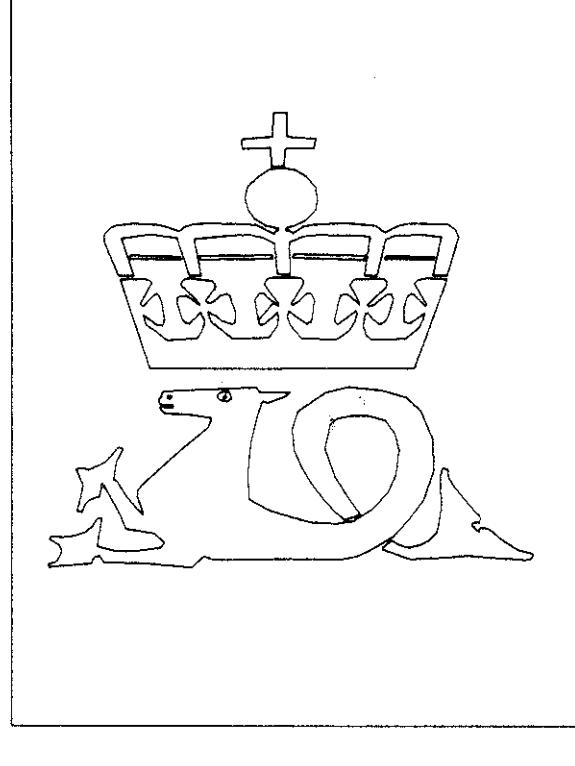
LICENSE NO: 090

TOTAL DEPTH: 4025 M RKB
KBE: 23 M
WATER DEPTH: 372 M

COORDINATES: 61°10'25.42"N/03°27'31.36"E
DATUM: ED50
SPUD CLASSIF.: WILDCAT
COMPL. CLASSIF.: P&A. GAS/COND. DISC.

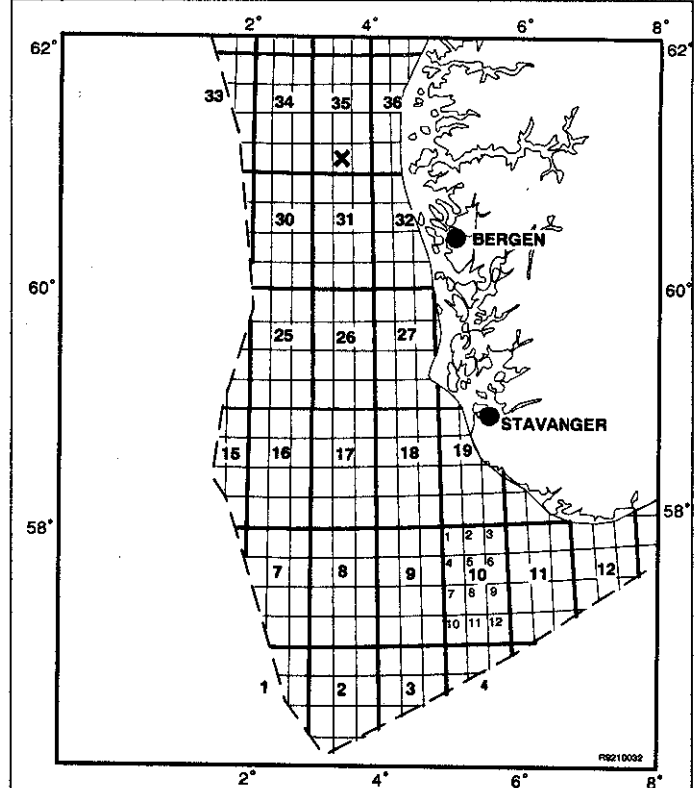
SPUD DATE: 87.07.20
COMPL. DATE: 87.12.04
RIG: TREASURE SCOUT

LICENSE GROUP:
NORSK HYDRO PRODUKSJON A.S. 10.000 %
MOBIL DEVELOPMENT NORWAY A.S. 40.000 %
DEN NORSKE STATS OLJESELSKAP A.S. 50.000 %



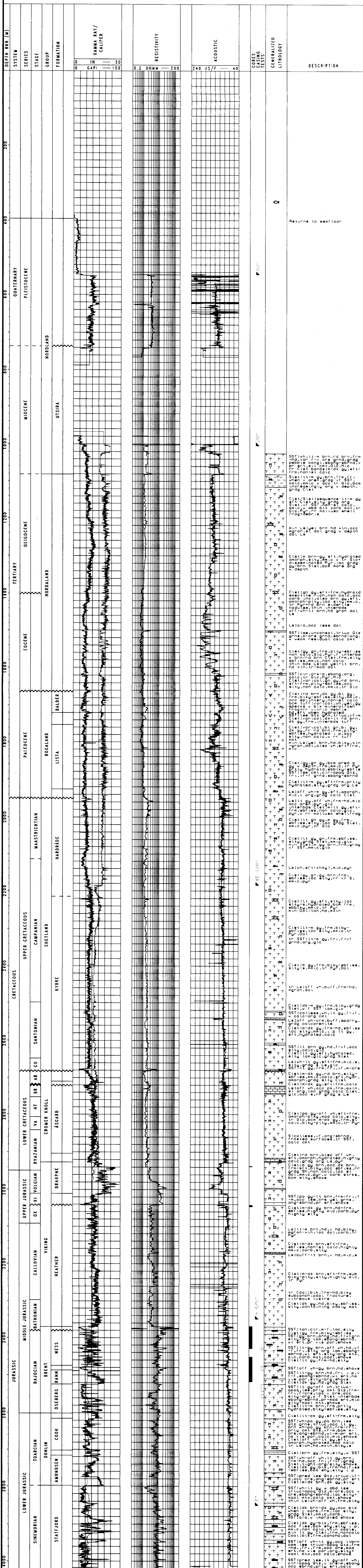
OLJEDIREKTORATET

LOCATION MAP



COMPLETION LOG

scale 1: 4000



Vertical column of lithology and description notes, including terms like 'SST:ltm', 'Clet:ltm', 'Ls:off', etc.