

Well no : 7120/12-03 Operator : HYDRO

Coordinates : 71 11 43.31 N UTM coord. : 7899413 N
20 46 43.70 E 492041 E

Licence no : 061 Permit no : 367

Rig : TREASURE SCOUT Rig type : SEMI-SUB.

Contractor : WILHELMSSEN OFFSHORE SERVICES

Bottom hole temperature : 29 deg.C Elev. KB : 23 M

Spud. date : 83.03.16 Water depth : 185 M

Compl. date : 83.05.05 Total depth : 2523 M

Spud. class : WILDCAT Form. at TD : TRIASSIC

Compl. class : P&A. GAS DISCOVERY Prod. form :

Seisloca : 513-350 SP 1545 AND 573-110 SP 1624

LICENSEES

10,000 AMOCO NORWAY OIL COMPANY
25,000 CONOCO NORWAY INC.
15,000 NORSK HYDRO PRODUKSJON A.S
50,000 DEN NORSKE STATS OLJESELSKAP A.S

CASING AND LEAK-OFF TESTS

Type	Casing diam.	Depth below KB	Hole diam.	Hole depth below KB	Lot mud eqv. g/cm ³
CONDUCTOR	30	269,0	36	274,0	
SURF.COND.	20	586,0	26	605,0	1,82
INTERM.	13 3/8	1485,0	17 1/2	1515,0	1,65
OPEN HOLE			12 1/4	2523,0	

CONVENTIONAL CORES

Core no.	Intervals cored meters	Recovery M %	Series
1	2195.0 - 2213.0	18.0 100.0	MIDDLE JURASSIC

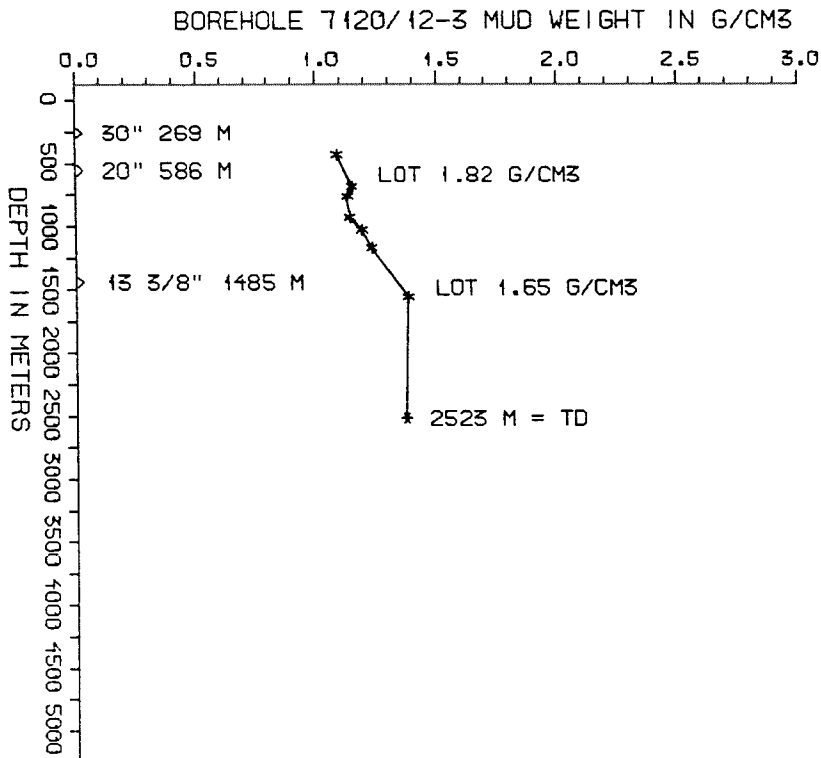
DRILL STEM TEST									
TEST NO	DEPTH BELOW KB	CHOKE SIZE mm	RECOVERY					PRESS. (psi)	
			OIL Sm ³ /d	GAS M Sm ³ /d	OIL GRAV. g/cm ³	GAS GRAV. rel.air	GOR m ³ /m ³	FSIP	WHP
	NONE								

AVAILABLE LOGS			
LOG TYPE	INTERVALS	1/200	1/500
ISF SONIC GR	268 - 618	x	x
ISF SONIC	585 - 1511	x	x
ISF SONIC MSFL	1487 - 2265	x	x
ISF SONIC	2230 - 2524	x	x
LDL	268 - 617	x	x
LDL	585 - 1512	x	x
LDL CNL	1487 - 2524	x	x
DLL	2140 - 2520	x	x
CDM	585 - 1508	x	
CDM	1487 - 2523	x	
CDM AP	581 - 1508	x	x
CDM AP	1491 - 2524	x	x
RFT SAMPLING	1487 - 2523	1:100	
RFT STRAIN GAUGE	1487 - 2523	1:100	
RFT HEWLETT PACKARD GAUGE	1487 - 2523	1:100	
CBL VDL	225 - 1480	x	
MUD	274 - 2523		x
VELOCITY	585 - 2505		x
(+ Seismic Velocity Survey		1stk)	
(+ Synthetic Seismogram Geogram		4stk)	

MUD PROPERTIES			
DEPTH BELOW KB m	WEIGHT g/cm ³	FUNNEL VISC. sec	FILTRATE LOSS cm ³
340	1.06	52	
620	1.12	50	
720	1.10	40	
830	1.11	52	
960	1.16	56	
1130	1.20	50	
1500	1.35	60	
1840	1.35	63	
2000	1.35	55	
2250	1.35	53	
2500	1.35	55	

DRILL BIT CUTTINGS AND WET SAMPLES		
SAMPLE TYPE	INTERVAL BELOW KB	NUMBER OF SAMPLES
CUTTINGS		
WET SAMPLES	280 - 2523	540

SHALLOW GAS	
DEPTH INTERVAL m KB	REMARKS
	NONE



WELL HISTORY - 7120/12-3

GENERAL:

The primary objective of wildcat 7120/12-3 was to test a sandstone reservoir of Middle to Lower Jurassic age on a separate structure in the northern part of the block. A secondary objective was to test Middle Triassic sandstones providing the Jurassic reservoir was better developed than expected. The well encountered gas in the Middle to Lower Jurassic sandstone interval. No other hydrocarbon bearing intervals were found and the well was not deepened to test the Middle Triassic sandstones.

OPERATIONS:

The well was spudded 16.03.83 by the semi-submersible rig Treasure Scout. One core was cut in the Middle Jurassic sandstone reservoir. During the drilling of the 17 1/2" section gumbo problems occurred. The well was drilled using waterbased mud.

TESTING:

The well was not tested.

GEOLOGICAL TOPS
WELL 7120/12-3

	Depth m (RKB)
Nordland Group	208,0
Sotbakken Group	390,0
Torsk Fm	390,0
Nygrunnen Group	721,0
Kveite Fm	721,0
Nordvestbanken Group	788,0
Kolmule Fm	788,0
Kolje Fm	1740,0
Knurr Fm	1780,0
Teistengrunnen Group	1950,0
Fuglen Fm	1950,0
Realgrunnen Group	2155,0
Stø Fm	2155,0
Nordmela Fm	2220,0
TD =	2523,0