

Well no : 2/11-07 Operator : HYDRO

Coordinates : 56 14 06.09 N UTM coord. : 6232552 N  
 03 37 38.84 E 538896 E

Licence no : 68 Permit no : 513

Rig : TREASURE SCOUT Rig type : SEMI-SUB.

Contractor : WILHELMSEN OFFSHORE SERVICES

Bottom hole temperature : 0 deg.C Elev. KB : 23 M

Spud. date : 86.04.16 Water depth : 73 M

Compl. date : 86.09.06 Total depth : 5042 M

Spud. class : WILDCAT Form. at TD : L.JURASSIC

Compl. class : P&A. DRY HOLE Prod. form :

Seisloca : NH 8201 - 412 SP. 194

## LICENSEES

7.500000 NORSKE CONOCO A/S  
 25.000000 NORSK HYDRO PRODUKSJON A.S  
 7.500000 MOBIL DEVELOPMENT NORWAY A.S.  
 10.000000 SAGA PETROLEUM A.S.  
 50.000000 DEN NORSKE STATS OLJESELSKAP A.S

## CASING AND LEAK-OFF TESTS

Type	Casing diam.	Depth below KB	Hole diam.	Hole depth below KB	Lot mud eqv. g/cm3
CONDUCTOR	30	179.0		.0	.
SURF.COND.	20	1001.0		.0	1.88
INTERM.	13 3/8	2695.0		.0	1.99
INTERM.	9 5/8	3737.0		.0	2.18
LINER	7	3960.0		.0	2.22
LINER	5	5024.0		.0	.

## MUD PROPERTIES

Depth below KB meter	Mud weight g/cm3	Viscosity	Mud type
179.000	1.03	0.0	WATER
1016.000	1.10	0.0	WATER
1526.000	1.50	0.0	WATER
1753.000	1.55	31.0	WATER
2205.000	1.60	37.0	WATER
3390.000	1.95	31.0	WATER BASED
3462.000	1.60	23.0	WATER
3600.000	1.91	31.0	WATER BASED
3601.000	1.60	23.0	WATER
3640.000	1.91	38.0	WATER BASED
3654.000	1.60	24.0	WATER
3728.000	1.65	29.0	WATER
3735.000	1.95	21.0	WATER BASED
3737.000	1.65	28.0	WATER
3737.000	1.93	32.0	WATER BASED

3741.000	1.90	38.0	WATER BASED
3746.000	1.91	36.0	WATER BASED
3750.000	1.92	35.0	WATER BASED
3750.000	1.93	35.0	WATER BASED
3766.000	1.65	32.0	WATER
3766.000	1.91	38.0	WATER BASED
3799.000	1.78	36.0	WATER BASED
3807.000	1.90	38.0	WATER BASED
3811.000	1.88	37.0	WATER BASED
3811.000	1.90	38.0	WATER BASED
3811.000	1.88	42.0	WATER BASED
3811.000	1.91	34.0	WATER BASED
3811.000	1.90	37.0	WATER BASED
3811.000	1.91	41.0	WATER BASED
3816.000	1.95	32.0	WATER BASED
3848.000	2.02	44.0	WATER BASED
3904.000	2.05	48.0	WATER BASED
3956.000	2.07	46.0	WATER BASED
3965.000	2.10	21.0	WATER BASED
3968.000	2.14	23.0	WATER BASED
3983.000	2.12	21.0	WATER BASED
4304.000	2.09	27.0	WATER BASED
4397.000	2.10	26.0	WATER BASED
4484.000	2.12	29.0	WATER BASED
4660.000	2.10	29.0	WATER BASED
4897.000	2.11	30.0	WATER BASED
5011.000	2.12	29.0	WATER BASED
5042.000	2.13	33.0	WATER BASED
5042.000	2.14	26.0	WATER BASED

### DRILL BIT CUTTINGS AND WET SAMPLES

SAMPLE TYPE	INTERVAL BELOW KB	NUMBER OF SAMPLES
Cutting	1020-5042	600
Wet Samples	1020-5042	835

### SHALLOW GAS

Interval below KB	REMARKS
-----	

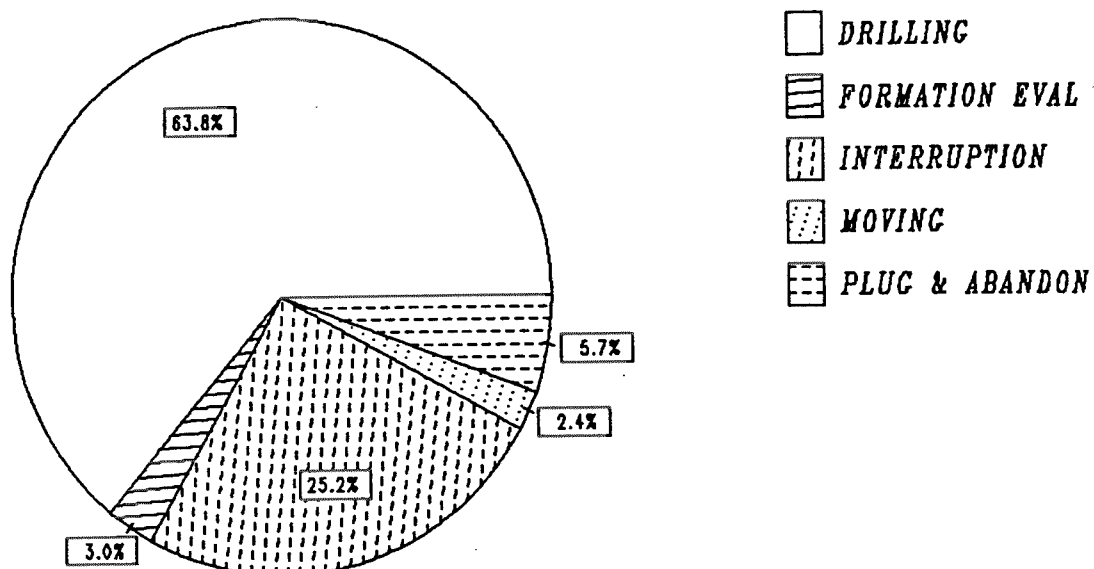
### AVAILABLE LOGS

LOG TYPE	INTERVALS	1/200	1/500	Div.
DIL LSS GR	1001.000 - 2718.000	X	X	
DIL LSS GR	3959.000 - 4658.000	X	X	
LDL GR	1001.000 - 2718.000	X	X	
LDL CNL GR	3500.000 - 3965.000	X	X	
LDL CNL GR	3959.000 - 4736.000	X	X	
DLL LSS MSFL GR SP	2696.500 - 3734.500	X	X	
DLL LSS MSFL GR SP	3737.000 - 3961.000	X	X	
DLL LSS MSFL GR	4600.000 - 5038.500	X	X	

RFT STRAIN GAUGE	3769.000 - 3957.500	X	X
CBL VDL GR	3139.000 - 3959.000	X	
CBL VDL GR	3388.000 - 3735.000	X	
CBL VDL GR	3793.000 - 4807.000	X	
TEMPERATURE DATA	95.000 - 5042.000	1:5000	
WIRELINE DATA	95.000 - 5042.000	1:5000	
DRILLING DATA	95.000 - 5042.000	1:5000	
PRESSURE EVALUATION	95.000 - 5042.000	1:5000	
DXC NXB	95.000 - 5042.000	1:5000	
MUD LOG	96.000 - 5050.000		X
VELOCITY	980.000 - 5010.000	1000	X
(VSP, Sat 3axis, Run 6A, 700-4945m		1 stk.)	
(Velocity, Synthetic seismogram, 10cm/s		1 stk.)	
(Geogram, Synthetic seismogram, 10cm/s		8 stk.)	

# DAILY DRILLING REPORT SYSTEM

Main operations for well : 0002/11 - 07



Total : 3528.00 hours

Main operation	Minutes	Hours	% of total
DRILLING	135120	2252.00	63.83
FORMATION EVAL	6240	104.00	2.95
INTERRUPTION	53340	889.00	25.20
MOVING	4980	83.00	2.35
PLUG & ABANDON	12000	200.00	5.67

MAIN OPERATIONS FOR WELL : 0002 / 11 - 07

MAIN OPERATION : DRILLING

Sub operations	Minutes	Hrs	% of total
BOP ACTIVITIES	7020	117.00	5.20
BOP/WELLHEAD EQ	690	11.50	0.51
CASING	31500	525.00	23.31
CIRC/COND	15330	255.50	11.35
DRILL	43650	727.50	32.30
HOLE OPEN	2040	34.00	1.51
OTHER	900	15.00	0.67
PRESS DETECTION	420	7.00	0.31
REAM	13560	226.00	10.04
SURVEY	3360	56.00	2.49
TRIP	16590	276.50	12.28
WAIT	60	1.00	0.04
Total	135120	2252.00	100.00

MAIN OPERATION : FORMATION EVAL

Sub operations	Minutes	Hrs	% of total
CIRC SAMPLES	150	2.50	2.40
CIRC/COND	420	7.00	6.73
CORE	1350	22.50	21.63
LOG	3540	59.00	56.73
TRIP	780	13.00	12.50
Total	6240	104.00	100.00

MAIN OPERATION : INTERRUPTION

Sub operations	Minutes	Hrs	% of total
FISH	6180	103.00	11.59
LOST CIRC	14970	249.50	28.07
MAINTAIN/REP	14160	236.00	26.55
OTHER	4050	67.50	7.59
SIDETRACK	150	2.50	0.28
WAIT	5160	86.00	9.67
WELL CONTROL	8670	144.50	16.25
Total	53340	889.00	100.00

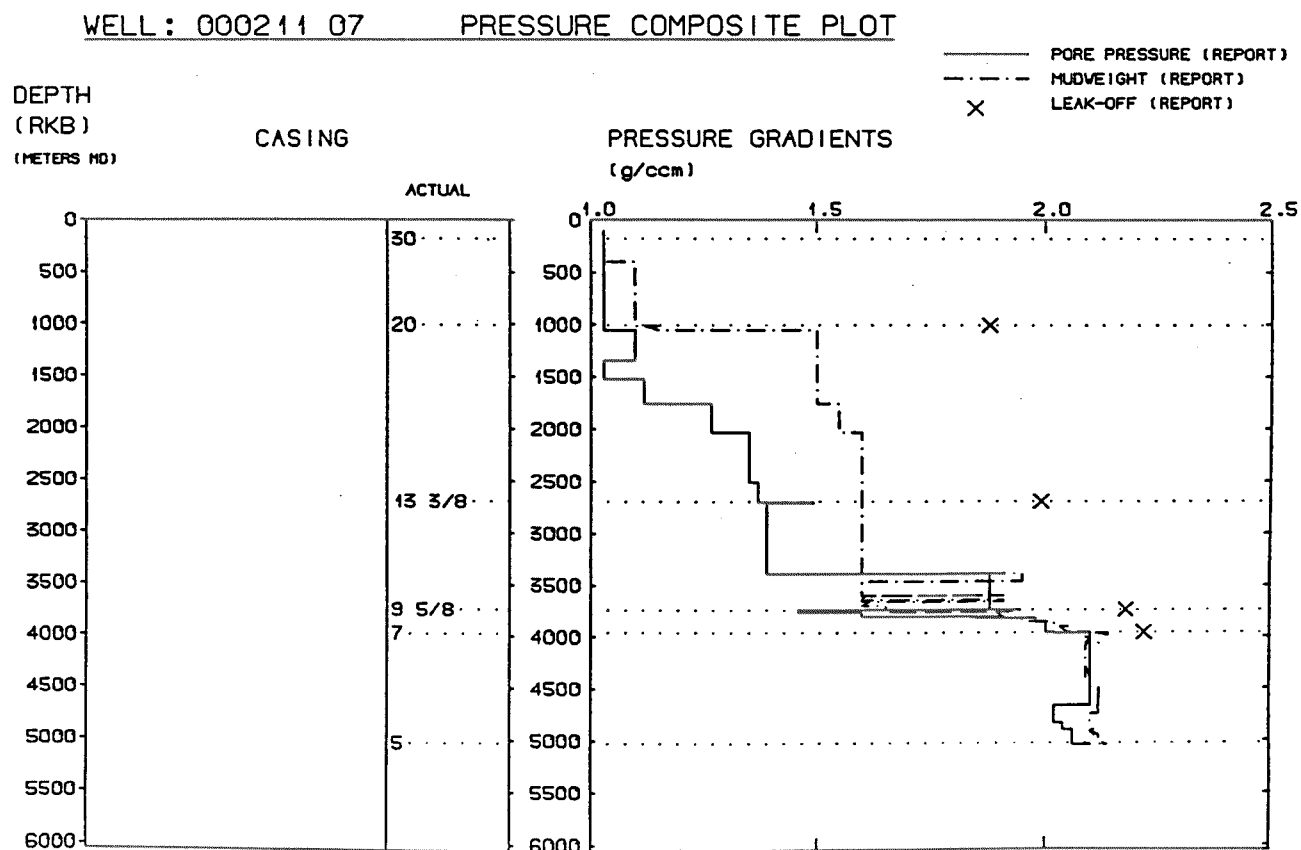
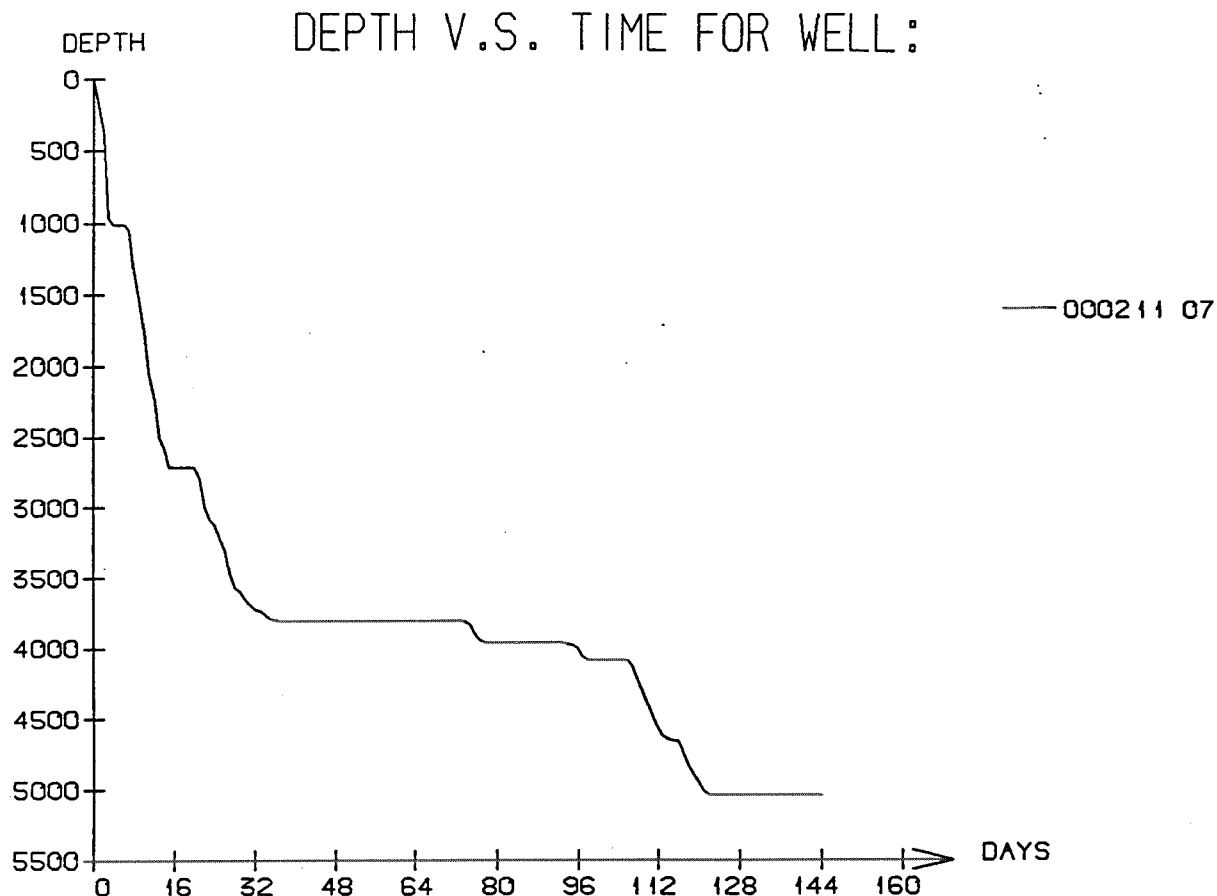
MAIN OPERATION : MOVING

Sub operations	Minutes	Hrs	% of total
ANCHOR	1200	20.00	24.10
TRANSIT	3780	63.00	75.90
Total	4980	83.00	100.00

MAIN OPERATION : PLUG & ABANDON

Sub operations	Minutes	Hrs	% of total
CEMENT PLUG	300	5.00	2.50
CIRC/COND	120	2.00	1.00
CUT	2430	40.50	20.25
EQUIP RECOVERY	2310	38.50	19.25
PERFORATE	870	14.50	7.25
SQUEEZE	510	8.50	4.25
TRIP	2250	37.50	18.75
WAIT	3210	53.50	26.75
Total	12000	200.00	100.00

Total time used 3528.00 hrs



## Well History 2/11-7.

### GENERAL:

Well 2/11-7 was designed to test a Jurassic reservoir half way between the crest and the mapped closing contour of a fault controlled structure updip from the Danish well Gert 1 in the same structure. The primary objective was the Middle Jurassic sands that was expected to come in at 4696 m. Seismic anomalies at 320- 350 - and 445 m respectively. Prognosed depth at 5025 m.

### OPERATIONS:

Wildcat well 2/11-7 was spudded 16 April 1986 by Wilh. Wilhelmsen semi-submersibel rig Treasure Scout and completed 6 September 1986 at a TD of 5042 m RKB in Upper Jurassic shales. The well was "flowchecked" at 318 -and 445 m RKB, without any indications of gas. Some technical problems occurred during drilling with loss of mud, poor cementing and artificial high pressure. Due to high formation pressure and safety problems, drilling was not continued to reach the prognosed formation.

Shows were reported from lowermost Chalk Group, Lst in the Cromer Knoll Group and from the Upper Jurassic Dolomite and Sst stringers. No conventional cores were cut in this well. 30 sidewall cores were taken from 3801,5 m to 3756 m RKB whereof 10 was recovered.

### TESTING:

No DST test were performed in this well.

# GEOLOGICAL TOPS

WELL: 2/11-7

Depth m (RKB)

<i>Nordland Group</i>	95
<i>Hordaland Group</i>	1560
<i>Rogaland Group</i>	2945
<i>Balder Fm.</i>	2945
<i>Sele Fm.</i>	2959
<i>Lista Fm.</i>	3012
<i>Maureen Fm.</i>	3056
<i>Chalk Group</i>	3075
<i>Ekofisk Fm.</i>	3075
<i>Tor Fm.</i>	3132
<i>Hod Fm.</i>	3265
<i>Hidra Fm.</i>	3591
<i>Cromer Knoll Group</i>	3620
<i>Rødby Fm.</i>	3620
<i>Sola Fm. (Mime Mb)</i>	3658
<i>Tuxen Fm.</i>	3686
<i>Åsgard Fm.</i>	3735
<i>Tyne Group</i>	3773
<i>Mandal Fm.</i>	3773
<i>Farsund Fm.</i>	3814
<i>Haugesund Fm.</i>	4720
<i>T.D.</i>	5042